



KNITTING PATTERN

# Solana

## T-shirt

Design: Lirio Knits | Hobbii Design



## MATERIALS

4 (5) 5 (6) 6 (7) 7 skeins of **Baby Cotton Organic** color Cream 02

Circular needle 3 mm, 40 and 80 cm /US 2.5, 16 and 31.5"

Double Pointed Needles or small circular needles 3 mm /US 2.5

Stitch wire

Tapestry needle

## YARN QUALITY

 **Baby Cotton Organic**, Hobbii

100% Egyptian Cotton

50 g / 1.75 oz = 170 m / 185 yds

## GAUGE

27 sts x 40 rows = 10 cm x 10 cm / 4" x 4" in Stockinette Stitch in the round, on 3 mm (US 2.5) needles, blocked

## HASHTAGS FOR SOCIAL MEDIA

#hobbiidesign #hobbiisolana

#hobbiiharmony

## SIZE

XS (S) M (L) XL (2XL) 3XL

## MEASUREMENTS

Bust circumference: 82 (88) 94.5 (101) 113 (120)

126 cm / 32.3 (34.6) 37 (39.7) 44.5 (47) 49.6"

Raglan Depth: 15.5 (17) 19 (19) 22.5 (22.5) 26 cm / 6 (6.7) 7.5 (7.5) 8.9 (8.9) 10.2"

Sleeve circumference: 31.5 (31.5) 38 (38) 44 (44) 44 cm / 12.4 (12.4) 15 (15) 17.3 (17.3) 17.3"

The t-shirt has a positive ease of 0-5cm /0-2".

## PATTERN INFORMATION

The Solana t-shirt, sister to the Solana tank top, has a bottom-up raglan construction. First, the sleeves and body are knitted separately in the round, with a lace edge that can be worked either from a chart or written instructions. Once the three pieces are complete, they're joined onto a single needle, where decreases for the raglan are worked up to the collar.

A decrease chart for each size is included to help keep track throughout the process.

Techniques used in this pattern include long tail cast on, joining in the round, working with DPNs or magic loop, working lace stitches, decreasing (K2tog and Skpo) and grafting or Kitchener stitch.

## BUY THE YARN HERE

<https://shop.hobbii.com/solana-t-shirt>

## QUESTIONS

If you have any questions regarding this pattern, please feel free to email us at [support@hobbii.com](mailto:support@hobbii.com). Please make sure to include the pattern's name and number.

Happy Crafting!

# Pattern



## ABBREVIATIONS

BORm = Beginning of row marker  
 DPNs = Double Pointed Needles  
 K2tog = Knit 2 stitches together  
 K = Knit  
 M = Marker  
 P = Purl  
 PM = Place marker  
 Rep = Repeat  
 Rnd = Round  
 RS = right side  
 Skpo = Slip, knit, pass over  
 Sl = Slip  
 St(s) = Stitch(es)  
 St st = Stockinette Stitch  
 WS = wrong side  
 Yo = yarn over

## INFO AND TIPS

The chart for the lace pattern is worked in the round, so all rows are read from right to left starting from the bottom right corner. The number of chart repeats per round is provided for each size, so you work each row of the chart the specified number of times until all 12 rows are complete.

The decrease charts only include the rounds where you have to work decreases (except for the set-up row, which shows you how to distribute the stitches when placing the stitch markers).

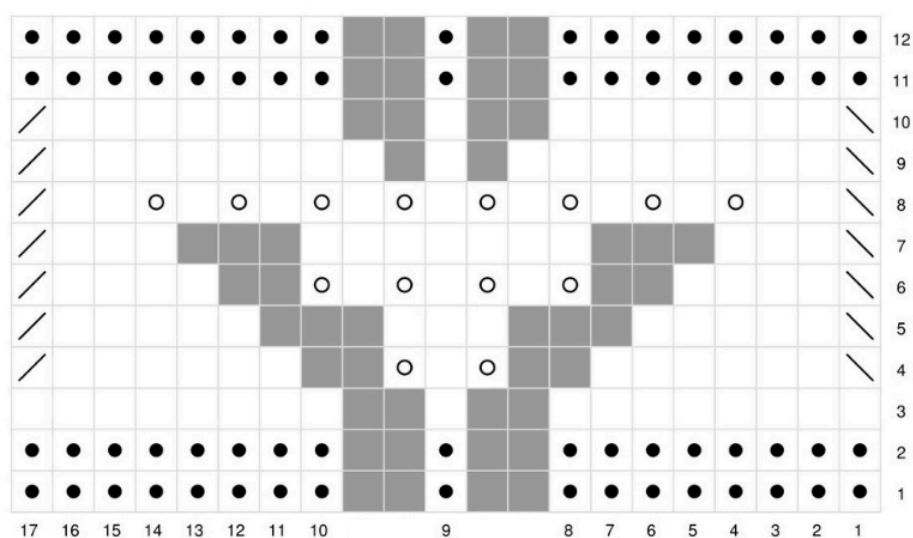
## LACE PATTERN







### Written instructions

Row 1: P all  
 Row 2: P all  
 Row 3: K all

Row 4: Skpo, k6, yo, k1, yo, k6, k2tog  
 Row 5: Skpo, k13, k2tog  
 Row 6: Skpo, k4, \*yo, k1\* rep \*to\* 4 times, k3, k2tog  
 Row 7: Skpo, k13, k2tog  
 Row 8: Skpo, k2, \*yo, k1\* rep \*to\* 8 times, k1, k2tog  
 Row 9: Skpo, k17, k2tog  
 Row 10: Skpo, k15, k2tog  
 Row 11: P all  
 Row 12: P all

### Lace chart



	Knit		Yarn over
	Purl		No stitch
	Knit 2 together		Slip, knit, pass over



## SLEEVES

### Make 2

On 3 mm (US 2.5) DPNs (or preferred method for working small circumferences), cast on 85 (85) 102 (102) 119 (119) 119 sts with the long tail cast on method. Join in the rnd and place a BORm (make sure your stitches aren't twisted).

Work the lace pattern from chart or written instructions. Repeat the 17-stitch pattern, 5 (5) 6 (6) 7 (7) 7 times around.

Once you've completed the 12 rows of the chart, work 4 rounds in Stockinette St (knit all sts), or to your desired sleeve length from underarm.

On the last rnd, work to 4 (3) 5 (7) 7 (7) 7 sts before BORm. Break yarn and place the following 8 (6) 10 (14) 14 (14) 14 sts for underarm on a stitch wire.

Leave remaining 77 (79) 92 (88) 105 (105) 105 sts for sleeve on hold on a different stitch wire.

## BODY

On 3 mm (US 2.5) longer circular needles, cast on 221 (238) 255 (272) 306 (323) 340 sts with the long tail cast on method. Place a BORm and join the round (make sure your stitches aren't twisted)

Work the lace pattern from chart or written instructions. Repeat the 17-stitch pattern, 13 (14) 15 (16) 18 (19) 20 times.

Once you've completed the 12 rows of the chart, work in Stockinette St (knit all sts), until piece measures 25.5 (25.5) 25.5 (30.5) 30.5 (30.5) 30.5 cm / 10 (10) 10 (12) 12 (12) 12" from first row of St st, or until desired length from underarms.

## YOKE

From body, k across 102 (113) 117 (122) 139 (147) 156 sts for front, leave next 8 (6) 10 (14) 14 (14) 14 sts from body on hold. Transfer the 77 (79) 92 (88) 105 (105) 105 sts from one sleeve to left hand needle and knit. Knit across 103 (113) 118 (122) 139 (148) 156 sts for back. Leave next 8 (6) 10 (14) 14 (14) 14 sts from body on hold and transfer the 77 (79) 92 (88) 105 (105) 105 sts from second sleeve to left hand needle. Knit sleeve sts and place BORm (left front). You should have 359 (384) 419 (420) 488 (505) 522 sts on your needles.

Set-up rnd 1: Sl BORm, k 102 (113) 117 (122) 139 (147) 156 sts from front, PM, k2, PM, k 73 (75) 88 (84) 101 (101) 101 sts from right sleeve, PM, k2, PM, k 103 (113) 118 (122) 139 (148) 156 sts from back, PM, k2, PM, k 73 (75) 88 (84) 101 (101) 101 sts from left sleeve, PM, k2. You've placed 7 stitch markers, so you have 8 in total.

Set-up rnd 2: K all sts, slipping markers as you come to them.

Now, you'll start working the raglan decreases. As you decrease, change to smaller circular needles or preferred method for working small circumferences.

Work as follows:

Rnd 1 (Decrease Rnd): \*K2tog, k to 2 sts before m, skpo, sl m, k2, sl m\*. Repeat \*to\*, 3 more times. You've decreased 8 sts and should have 351 (376) 411 (412) 480 (497) 514 sts.

Rnd 2: K all

Rep rnds 1 and 2, 28 (31) 35 (35) 42 (44) 41 times in total, for 56 (62) 70 (70) 84 (88) 82 rnds. You should end up with 135 (136) 139 (140) 152 (153) 194 sts. 46 (51) 47 (52) 55 (59) 74 sts for front, 47 (51) 48 (52) 55 (60) 74 sts for back, and 17 (13) 18 (14) 17 (13) 19 sts for each sleeve, plus 8 raglan sts.

### **Size 3XL only**

You're on rnd 82 now. You'll work 5 more decrease rnds every 3 rnds as follows:

Rnd 83: K all

Rnd 84: Rep Decrease rnd 1 (You have 186 sts)

Rnd 85: K all

Rnd 86: K all

Rnds 87 to 98: Rep rnds 84 to 86.

You'll work a decrease rnd on rnds 87, 90, 93 and 96. You should end up with 154 sts. 64 sts for the front, 64 sts for the back, 9 sts for each sleeve, and 8 raglan sts.

### **All sizes resume**

Now, you'll work the collar as follows:

P all for 3 rnds.

Cast off knitwise loosely.

### **Finishing**

Place sts you left on hold when you joined body and sleeve on 3 mm (US 2.5) needles, and using the Kitchener stitch, join the stitches. Repeat for both underarms.

Weave in ends and block to measurements.

### **Enjoy!**

Lirio Knits

**LIRIO  
KNITS**

## Decrease charts

Size XS

Rnd	Front	Raglan	Right Sleeve	Raglan	Back	Raglan	Left sleeve	Raglan	Total sts
-----	-------	--------	--------------	--------	------	--------	-------------	--------	-----------

SET-UP	102	2	73	2	103	2	73	2	359
1	100	2	71	2	101	2	71	2	351
3	98	2	69	2	99	2	69	2	343
5	96	2	67	2	97	2	67	2	335
7	94	2	65	2	95	2	65	2	327
9	92	2	63	2	93	2	63	2	319
11	90	2	61	2	91	2	61	2	311
13	88	2	59	2	89	2	59	2	303
15	86	2	57	2	87	2	57	2	295
17	84	2	55	2	85	2	55	2	287
19	82	2	53	2	83	2	53	2	279
21	80	2	51	2	81	2	51	2	271
23	78	2	49	2	79	2	49	2	263
25	76	2	47	2	77	2	47	2	255
27	74	2	45	2	75	2	45	2	247
29	72	2	43	2	73	2	43	2	239
31	70	2	41	2	71	2	41	2	231
33	68	2	39	2	69	2	39	2	223
35	66	2	37	2	67	2	37	2	215
37	64	2	35	2	65	2	35	2	207
39	62	2	33	2	63	2	33	2	199
41	60	2	31	2	61	2	31	2	191
43	58	2	29	2	59	2	29	2	183
45	56	2	27	2	57	2	27	2	175
47	54	2	25	2	55	2	25	2	167
49	52	2	23	2	53	2	23	2	159
51	50	2	21	2	51	2	21	2	151
53	48	2	19	2	49	2	19	2	143
55	46	2	17	2	47	2	17	2	135

## Size S

Rnd	Front	Raglan	Right Sleeve	Raglan	Back	Raglan	Left sleeve	Raglan	Total sts
-----	-------	--------	--------------	--------	------	--------	-------------	--------	-----------

<b>SET-UP</b>	<b>113</b>	<b>2</b>	<b>75</b>	<b>2</b>	<b>113</b>	<b>2</b>	<b>75</b>	<b>2</b>	<b>384</b>
1	111	2	73	2	111	2	73	2	376
3	109	2	71	2	109	2	71	2	368
5	107	2	69	2	107	2	69	2	360
7	105	2	67	2	105	2	67	2	352
9	103	2	65	2	103	2	65	2	344
11	101	2	63	2	101	2	63	2	336
13	99	2	61	2	99	2	61	2	328
15	97	2	59	2	97	2	59	2	320
17	95	2	57	2	95	2	57	2	312
19	93	2	55	2	93	2	55	2	304
21	91	2	53	2	91	2	53	2	296
23	89	2	51	2	89	2	51	2	288
25	87	2	49	2	87	2	49	2	280
27	85	2	47	2	85	2	47	2	272
29	83	2	45	2	83	2	45	2	264
31	81	2	43	2	81	2	43	2	256
33	79	2	41	2	79	2	41	2	248
35	77	2	39	2	77	2	39	2	240
37	75	2	37	2	75	2	37	2	232
39	73	2	35	2	73	2	35	2	224
41	71	2	33	2	71	2	33	2	216
43	69	2	31	2	69	2	31	2	208
45	67	2	29	2	67	2	29	2	200
47	65	2	27	2	65	2	27	2	192
49	63	2	25	2	63	2	25	2	184
51	61	2	23	2	61	2	23	2	176
53	59	2	21	2	59	2	21	2	168
55	57	2	19	2	57	2	19	2	160
57	55	2	17	2	55	2	17	2	152
59	53	2	15	2	53	2	15	2	144
61	51	2	13	2	51	2	13	2	136



Size M

Rnd	Front	Raglan	Right Sleeve	Raglan	Back	Raglan	Left sleeve	Raglan	Total sts
-----	-------	--------	--------------	--------	------	--------	-------------	--------	-----------

<b>SET-UP</b>	<b>117</b>	<b>2</b>	<b>88</b>	<b>2</b>	<b>118</b>	<b>2</b>	<b>88</b>	<b>2</b>	<b>419</b>
1	115	2	86	2	116	2	86	2	411
3	113	2	84	2	114	2	84	2	403
5	111	2	82	2	112	2	82	2	395
7	109	2	80	2	110	2	80	2	387
9	107	2	78	2	108	2	78	2	379
11	105	2	76	2	106	2	76	2	371
13	103	2	74	2	104	2	74	2	363
15	101	2	72	2	102	2	72	2	355
17	99	2	70	2	100	2	70	2	347
19	97	2	68	2	98	2	68	2	339
21	95	2	66	2	96	2	66	2	331
23	93	2	64	2	94	2	64	2	323
25	91	2	62	2	92	2	62	2	315
27	89	2	60	2	90	2	60	2	307
29	87	2	58	2	88	2	58	2	299
31	85	2	56	2	86	2	56	2	291
33	83	2	54	2	84	2	54	2	283
35	81	2	52	2	82	2	52	2	275
37	79	2	50	2	80	2	50	2	267
39	77	2	48	2	78	2	48	2	259
41	75	2	46	2	76	2	46	2	251
43	73	2	44	2	74	2	44	2	243
45	71	2	42	2	72	2	42	2	235
47	69	2	40	2	70	2	40	2	227
49	67	2	38	2	68	2	38	2	219
51	65	2	36	2	66	2	36	2	211
53	63	2	34	2	64	2	34	2	203
55	61	2	32	2	62	2	32	2	195
57	59	2	30	2	60	2	30	2	187
59	57	2	28	2	58	2	28	2	179
61	55	2	26	2	56	2	26	2	171
63	53	2	24	2	54	2	24	2	163
65	51	2	22	2	52	2	22	2	155
67	49	2	20	2	50	2	20	2	147
69	47	2	18	2	48	2	18	2	139

# Size L

Rnd	Front	Raglan	Right Sleeve	Raglan	Back	Raglan	Left sleeve	Raglan	Total sts
-----	-------	--------	--------------	--------	------	--------	-------------	--------	-----------

SET-UP	122	2	84	2	122	2	84	2	420
1	120	2	82	2	120	2	82	2	412
3	118	2	80	2	118	2	80	2	404
5	116	2	78	2	116	2	78	2	396
7	114	2	76	2	114	2	76	2	388
9	112	2	74	2	112	2	74	2	380
11	110	2	72	2	110	2	72	2	372
13	108	2	70	2	108	2	70	2	364
15	106	2	68	2	106	2	68	2	356
17	104	2	66	2	104	2	66	2	348
19	102	2	64	2	102	2	64	2	340
21	100	2	62	2	100	2	62	2	332
23	98	2	60	2	98	2	60	2	324
25	96	2	58	2	96	2	58	2	316
27	94	2	56	2	94	2	56	2	308
29	92	2	54	2	92	2	54	2	300
31	90	2	52	2	90	2	52	2	292
33	88	2	50	2	88	2	50	2	284
35	86	2	48	2	86	2	48	2	276
37	84	2	46	2	84	2	46	2	268
39	82	2	44	2	82	2	44	2	260
41	80	2	42	2	80	2	42	2	252
43	78	2	40	2	78	2	40	2	244
45	76	2	38	2	76	2	38	2	236
47	74	2	36	2	74	2	36	2	228
49	72	2	34	2	72	2	34	2	220
51	70	2	32	2	70	2	32	2	212
53	68	2	30	2	68	2	30	2	204
55	66	2	28	2	66	2	28	2	196
57	64	2	26	2	64	2	26	2	188
59	62	2	24	2	62	2	24	2	180
61	60	2	22	2	60	2	22	2	172
63	58	2	20	2	58	2	20	2	164
65	56	2	18	2	56	2	18	2	156
67	54	2	16	2	54	2	16	2	148
69	52	2	14	2	52	2	14	2	140

## Size XL

Rnd	Front	Raglan	Right Sleeve	Raglan	Back	Raglan	Left sleeve	Raglan	Total sts
-----	-------	--------	--------------	--------	------	--------	-------------	--------	-----------

SET-UP	139	2	101	2	139	2	101	2	488
1	137	2	99	2	137	2	99	2	480
3	135	2	97	2	135	2	97	2	472
5	133	2	95	2	133	2	95	2	464
7	131	2	93	2	131	2	93	2	456
9	129	2	91	2	129	2	91	2	448
11	127	2	89	2	127	2	89	2	440
13	125	2	87	2	125	2	87	2	432
15	123	2	85	2	123	2	85	2	424
17	121	2	83	2	121	2	83	2	416
19	119	2	81	2	119	2	81	2	408
21	117	2	79	2	117	2	79	2	400
23	115	2	77	2	115	2	77	2	392
25	113	2	75	2	113	2	75	2	384
27	111	2	73	2	111	2	73	2	376
29	109	2	71	2	109	2	71	2	368
31	107	2	69	2	107	2	69	2	360
33	105	2	67	2	105	2	67	2	352
35	103	2	65	2	103	2	65	2	344
37	101	2	63	2	101	2	63	2	336
39	99	2	61	2	99	2	61	2	328
41	97	2	59	2	97	2	59	2	320
43	95	2	57	2	95	2	57	2	312
45	93	2	55	2	93	2	55	2	304
47	91	2	53	2	91	2	53	2	296
49	89	2	51	2	89	2	51	2	288
51	87	2	49	2	87	2	49	2	280
53	85	2	47	2	85	2	47	2	272
55	83	2	45	2	83	2	45	2	264
57	81	2	43	2	81	2	43	2	256
59	79	2	41	2	79	2	41	2	248
61	77	2	39	2	77	2	39	2	240
63	75	2	37	2	75	2	37	2	232
65	73	2	35	2	73	2	35	2	224
67	71	2	33	2	71	2	33	2	216
69	69	2	31	2	69	2	31	2	208
71	67	2	29	2	67	2	29	2	200
73	65	2	27	2	65	2	27	2	192
75	63	2	25	2	63	2	25	2	184
77	61	2	23	2	61	2	23	2	176
79	59	2	21	2	59	2	21	2	168
81	57	2	19	2	57	2	19	2	160
83	55	2	17	2	55	2	17	2	152

## Size 2XL

Rnd	Front	Raglan	Right Sleeve	Raglan	Back	Raglan	Left sleeve	Raglan	Total sts
<b>SET-UP</b>	<b>147</b>	<b>2</b>	<b>101</b>	<b>2</b>	<b>148</b>	<b>2</b>	<b>101</b>	<b>2</b>	<b>505</b>
1	145	2	99	2	146	2	99	2	497
3	143	2	97	2	144	2	97	2	489
5	141	2	95	2	142	2	95	2	481
7	139	2	93	2	140	2	93	2	473
9	137	2	91	2	138	2	91	2	465
11	135	2	89	2	136	2	89	2	457
13	133	2	87	2	134	2	87	2	449
15	131	2	85	2	132	2	85	2	441
17	129	2	83	2	130	2	83	2	433
19	127	2	81	2	128	2	81	2	425
21	125	2	79	2	126	2	79	2	417
23	123	2	77	2	124	2	77	2	409
25	121	2	75	2	122	2	75	2	401
27	119	2	73	2	120	2	73	2	393
29	117	2	71	2	118	2	71	2	385
31	115	2	69	2	116	2	69	2	377
33	113	2	67	2	114	2	67	2	369
35	111	2	65	2	112	2	65	2	361
37	109	2	63	2	110	2	63	2	353
39	107	2	61	2	108	2	61	2	345
41	105	2	59	2	106	2	59	2	337
43	103	2	57	2	104	2	57	2	329
45	101	2	55	2	102	2	55	2	321
47	99	2	53	2	100	2	53	2	313
49	97	2	51	2	98	2	51	2	305
51	95	2	49	2	96	2	49	2	297
53	93	2	47	2	94	2	47	2	289
55	91	2	45	2	92	2	45	2	281
57	89	2	43	2	90	2	43	2	273
59	87	2	41	2	88	2	41	2	265
61	85	2	39	2	86	2	39	2	257
63	83	2	37	2	84	2	37	2	249
65	81	2	35	2	82	2	35	2	241
67	79	2	33	2	80	2	33	2	233
69	77	2	31	2	78	2	31	2	225
71	75	2	29	2	76	2	29	2	217
73	73	2	27	2	74	2	27	2	209
75	71	2	25	2	72	2	25	2	201
77	69	2	23	2	70	2	23	2	193
79	67	2	21	2	68	2	21	2	185
81	65	2	19	2	66	2	19	2	177
83	63	2	17	2	64	2	17	2	169
85	61	2	15	2	62	2	15	2	161
87	59	2	13	2	60	2	13	2	153

# Size 3XL

Rnd	Front	Raglan	Right Sleeve	Raglan	Back	Raglan	Left sleeve	Raglan	Total sts
-----	-------	--------	--------------	--------	------	--------	-------------	--------	-----------

SET-UP	156	2	101	2	156	2	101	2	522
Decrease rnd 1	154	2	99	2	154	2	99	2	514
3	152	2	97	2	152	2	97	2	506
5	150	2	95	2	150	2	95	2	498
7	148	2	93	2	148	2	93	2	490
9	146	2	91	2	146	2	91	2	482
11	144	2	89	2	144	2	89	2	474
13	142	2	87	2	142	2	87	2	466
15	140	2	85	2	140	2	85	2	458
17	138	2	83	2	138	2	83	2	450
19	136	2	81	2	136	2	81	2	442
21	134	2	79	2	134	2	79	2	434
23	132	2	77	2	132	2	77	2	426
25	130	2	75	2	130	2	75	2	418
27	128	2	73	2	128	2	73	2	410
29	126	2	71	2	126	2	71	2	402
31	124	2	69	2	124	2	69	2	394
33	122	2	67	2	122	2	67	2	386
35	120	2	65	2	120	2	65	2	378
37	118	2	63	2	118	2	63	2	370
39	116	2	61	2	116	2	61	2	362
41	114	2	59	2	114	2	59	2	354
43	112	2	57	2	112	2	57	2	346
45	110	2	55	2	110	2	55	2	338
47	108	2	53	2	108	2	53	2	330
49	106	2	51	2	106	2	51	2	322
51	104	2	49	2	104	2	49	2	314
53	102	2	47	2	102	2	47	2	306
55	100	2	45	2	100	2	45	2	298
57	98	2	43	2	98	2	43	2	290
59	96	2	41	2	96	2	41	2	282
61	94	2	39	2	94	2	39	2	274
63	92	2	37	2	92	2	37	2	266
65	90	2	35	2	90	2	35	2	258
67	88	2	33	2	88	2	33	2	250
69	86	2	31	2	86	2	31	2	242
71	84	2	29	2	84	2	29	2	234
73	82	2	27	2	82	2	27	2	226
75	80	2	25	2	80	2	25	2	218
77	78	2	23	2	78	2	23	2	210
79	76	2	21	2	76	2	21	2	202
81	74	2	19	2	74	2	19	2	194
84	72	2	17	2	72	2	17	2	186
87	70	2	15	2	70	2	15	2	178
90	68	2	13	2	68	2	13	2	170
93	66	2	11	2	66	2	11	2	162
96	64	2	9	2	64	2	9	2	154