



KNITTING PATTERN

# Whim

Colourwork Pullover

**Design: Paulina Castell Gutiérrez** | Winter 2025

# pompom x hobbii

## MATERIALS

**Pom Pom x Hobbii** Garland

### Shades:

**Yarn A:** Wisp (19); 5 (6, 7, 7, 8, 9, 10, 11, 12) balls

**Yarn B:** Amulet (17); 2 (2, 2, 3, 3, 3, 3, 4, 4) balls

**Yarn C:** Nye (20); 1 (1, 2, 2, 2, 2, 2, 2, 2) balls

**Yarn D:** Vinnie (13); 2 (2, 2, 2, 2, 2, 3, 3, 3) balls

**Yarn E:** Whim (01); 2 (2, 2, 2, 2, 3, 3, 3, 3) balls

4.5mm / US 7 circular needle, 60-100cm / 24-40" length (depending on size worked) **and** needles suitable for working small circumferences in the round

4mm / US 6 circular needles, 60-100cm / 24-40" length **and** needles suitable for working small circumferences in the round

Always use a needle size that will result in the correct gauge after blocking.

Stitch marker, locking stitch marker, stitch holders, tapestry needle

## YARN QUALITY

 **Garland**, Hobbii x Pom Pom

Worsted weight

70% Cotton, 30% Alpaca

105m / 114yd per 50 g

## HASHTAGS FOR SOCIAL MEDIA

#WhimPullover #PomPomXHobbii

## QUESTIONS

If you have any questions regarding this pattern, please feel free to email us at [support@hobbii.com](mailto:support@hobbii.com). Please make sure to include the pattern's name and number.

Happy Crafting!

## SIZES

1 (2, 3, 4, 5, 6, 7, 8, 9)

## MEASUREMENTS

### Finished chest (fullest point) circumference:

92 (100, 109, 117, 125, 134, 150, 159, 167)cm / 36 (39½, 43, 46, 49¼, 52½, 59, 62½, 66¾)" - to be worn with 10-15cm / 4-6" positive ease

Model has a 96.5 cm / 38" chest circumference and is wearing a size 3.

## PATTERN INFORMATION

Whim is worked top down in the round using the stranded colourwork technique. It starts at the neck, incorporating short rows, followed by the yoke with the first colourwork motif. Increases are added progressively until the yoke is completed.

Next, the body and sleeves are separated, and a few rounds are worked in Stocking stitch in the main colour. At the end of the body, another colourwork motif is added before the hem is worked.

The stitches for the sleeves are then picked up; they are knitted in the main colour and also incorporate the colourwork motif from the body. For the cuff, some stitches are decreased, followed by an elastic cast-off.

Finally, some sections are embroidered with chain stitch to highlight and "decorate" the design.

## BUY THE YARN HERE

<https://shop.hobbii.com/whim-colourwork-pullover>

## Pattern



### GAUGE

18 sts & 26 rounds = 10cm / 4" over St st on 4.5mm needles after blocking.

### ABBREVIATIONS

Beg: beginning

Dec: decrease

Foll: follow(s)/following

Inc: increase

K: knit

k2tog: knit 2 stitches together

M1L: Make 1 Left; pick up strand between the two needles from the front to back with the tip of left needle, knit into the back of this stitch

M1R: Make 1 Right; pick up strand between the two needles from back to front with the tip of left needle, knit into the front of this stitch

Patt: pattern (i.e. work in pattern)

PM: place marker

P: purl

Rem: remain(s)/remaining

Rep: repeat

RS: right side

Sl: slip

Ssk: slip 2 stitches knitwise one at a time, knit together through the back loops

SM: slip marker

st(s): stitch(es)

St st: stocking stitch (stockinette): knit on RS rows, purl on WS rows

Tbl: through the back loop

Tog: together

Wyib: with yarn held in back of work

Wyif: with yarn held in front of work

WS: wrong side

## STITCH GLOSSARY

### German Short Rows:

**Create DS:** Bring yarn to front, slip the first stitch as if to purl, bring yarn over the needle to the back of your work and pull tight (it will look like a double stitch = DS)

**Resolving Double Stitches:** When you encounter the DS on subsequent rows, work DS in pattern, inserting needle through both legs of the DS and treating it as one stitch.

### Italian Tubular Cast Off (in the round):

The Italian Tubular Cast Off begins with 2 set-up rounds:

**Set-up round 1:** [K1, sl1 wyif] to end.

**Set-up round 2:** [Sl1 wyib, p1] to end.

Place a locking stitch marker in the first k st and in the first p st. Cut yarn leaving a tail at least 3 times as long as the piece to be cast off. Thread this tail onto a tapestry needle.

**Step 1:** Insert the needle knitwise into the first k st, pull the yarn through and lift the st off the needle.

**Step 2:** Insert the needle purlwise into the second k stitch and pull the yarn through, let this st sit on the needle.

**Step 3:** Insert the needle purlwise from the right in the first p st, pull the yarn through and remove the st from the needle.

**Step 4:** Insert the needle from the back between the next 2 sts, turn the needle and insert the needle back knitwise in the p st and pull the yarn through.

Repeat steps 1-4 around until 2 sts rem, place the first 2 sts (sts with markers) on needle and continue casting off. Since the yarn has already been through the first 2 sts at the beg of the round once, sew these sts only once through at the end. Weave in end on WS.

### 1x1 Half-twisted Rib (in the round):

**Round 1:** [K1tbl, p1] to end.

Rep round 1 for pattern.

### 1x1 Half-twisted Rib (flat):

**Row 1 (RS):** [K1tbl, p1] to end.

**Row 2 (WS):** [K1, p1tbl] to end.

Rep rows 1-2 for pattern.

### Embroidering the Garment

Use chain stitch to outline each of the motifs, rounding their shapes. It is recommended to outline each motif with the same colour used to knit it.

There is only one chain stitch embroidery that doesn't outline a motif: the stems on the yoke that connect Motif 1 to Motif 4, which are worked in yarn D as a line through the middle of each motif. You can follow the tutorial below: <https://youtu.be/YHvGfNm272k>

## PATTERN BEGINS

**Note:** Begin the yoke using needles suitable for working small circumferences in the round, then change to circular needles as the circumference increases.

## YOKE

### Neck

Using smaller needles, yarn B and the long-tail method, cast on 80 (84, 90, 94, 108, 112, 122, 126, 132) sts. Join for working in the round being careful not to twist sts. PM to indicate beg of the round.

**Round 1:** [K1tbl, p1] to end.

Round 1 sets 1x1 Half-twisted Rib pattern. Rep round 1 a further 5 times.

Shape back neck with short rows as foll:

**Short Row 1 (RS):** Work in patt across 11 (12, 12, 12, 13, 15, 13, 14, 12) sts, turn.

**Short Row 2 (WS):** Create DS, patt to marker, SM, patt across 11 (12, 12, 12, 13, 15, 13, 14, 12) sts, turn.

**Short Row 3:** Create DS, patt to DS, resolve DS, patt across 6 (6, 7, 4, 5, 5, 5, 6) sts, turn.

**Short Row 4:** Create DS, patt to DS, resolve DS, patt across 6 (6, 7, 4, 5, 5, 5, 6) sts, turn.

Rep short rows 3-4 a further 2 (2, 2, 4, 4, 4, 5, 5, 5) times. 4 (4, 4, 6, 6, 6, 7, 7, 7) DS worked on each side of marker

**Next round (RS):** Create DS, patt to marker, SM, patt to end resolving DS as you pass it.

Change to larger needles.

**Next round (inc):** K1 (0, 2, 1, 1, 0, 1, 0, 2), [k2, M1L] to last 1 (0, 2, 1, 1, 0, 1, 0, 2) sts, k1 (0, 2, 1, 1, 0, 1, 0, 2). 119 (126, 133, 140, 161, 168, 182, 189, 196) sts

Break yarn B. Join yarn A.

### Motif 1

Joining yarns C & E when necessary, using stranded colourwork technique, begin working Chart A as foll:

**Round 1:** Work round 1 of Chart A working the 7-st rep 17 (18, 19, 20, 23, 24, 26, 27, 28) times across round.

Working next round of chart each time, continue as set until Chart A is complete. 153 (162, 171, 180, 207, 216, 234, 243, 252) sts

Break yarns C and E, continue with yarn A only.

Knit 1 (1, 1, 2, 3, 3, 4, 4, 5) rounds.

**Next round (inc):** [K3, M1L, k3, M1R, k3] to end. 187 (198, 209, 220, 253, 264, 286, 297, 308) sts

Knit 1 (1, 1, 2, 2, 3, 3, 4, 4) rounds.

### Motif 2

Joining yarn B when necessary, using stranded colourwork technique, begin working Chart B as foll:

**Round 1:** Work round 1 of Chart B working the 11-st rep 17 (18, 19, 20, 23, 24, 26, 27, 28) times across round.

Working next round of chart each time, continue as set until Chart B is complete.

Break yarn B, continue with yarn A only.

Knit 1 (1, 1, 2, 3, 3, 4, 4, 5) rounds.

**Next round (inc):** [K4, M1L, k3, M1R, k4] to end. 221 (234, 247, 260, 299, 312, 338, 351, 364) sts

Knit 1 (1, 1, 2, 2, 3, 3, 4, 4) rounds.

### Motif 3

Joining yarn D when necessary, using stranded colourwork technique, begin working Chart C as foll:

**Round 1:** Work round 1 of Chart C working the 13-st rep 17 (18, 19, 20, 23, 24, 26, 27, 28) times across round.

Working next round of chart each time, continue as set until Chart C is complete.

Break yarn D, continue with yarn A only.

Knit 2 (3, 4, 5, 5, 5, 6, 6, 7) rounds.

**Next round (inc):** [K5, M1L, k3, M1R, k5] to end. 255 (270, 285, 300, 345, 360, 390, 405, 420) sts

Knit 1 (2, 3, 4, 4, 4, 5, 5, 6) rounds.

### Motif 4

Joining yarns D and E when necessary, using stranded colourwork technique, begin working Chart D as foll:

**Round 1:** Work round 1 of Chart D working the 15-st rep 17 (18, 19, 20, 23, 24, 26, 27, 28) times across round.

Working next round of chart each time, continue as set until Chart D is complete.

Break yarns D and E, continue with yarn A only.

Knit 1 round.

### Divide Body and Sleeves

**Next round:** K38 (41, 44, 47, 54, 58, 61, 63, 66) sts, place next 51 (53, 54, 56, 64, 64, 73, 76, 78) sts on hold for sleeve, with backwards loop method cast on 6 (8, 9, 11, 4, 4, 13, 16, 18) sts, k77 (82, 89, 94, 109, 116, 122, 127, 132) sts, place next 51 (53, 54, 56, 64, 64, 73, 76, 78) sts on hold for sleeve, with backwards loop method cast on 6 (8, 9, 11, 4, 4, 13, 16, 18) sts, k to end. 165 (180, 195, 210, 225, 240, 270, 285, 300) sts

### BODY

Knit 38 (40, 42, 44, 50, 52, 52, 56, 58) rounds, or until Body measures approx. 16cm / 6¼" less than desired length.

### Motif 5

Joining yarns B, C, D and E when necessary, using stranded colourwork technique, begin working Chart E as foll:

**Round 1:** Work round 1 of Chart E working the 15-st rep 11 (12, 13, 14, 15, 16, 18, 19, 20) times across round.

Working next round of chart each time, continue as set until Chart E is complete.  
Break yarns A, C, D and E, continue with yarn B only.

## Waistband

Knit 1 round.

Change to smaller needles.

## Sizes 2, 4, 6, 7 & 9 ONLY

**Round 1:** [K1tbl, p1] to end.

Rep round 1 a further 7 times.

## Sizes 1, 3, 5 & 8 ONLY

**Round 1:** K2tog, [p1, k1tbl] to last st, p1. 164 (-, 194, -, 224, -, -, 284, -) sts

**Round 2:** [K1tbl, p1] to end.

Rep round 2 a further 6 times.

## ALL sizes again

Prepare for tubular cast-off as foll:

**Set-up round 1:** [K1, sl1 wyif] to end.

**Set-up round 2:** [^Sl1 wyib, p1] to end.

Break yarn leaving a tail approx. 3 times the length of the waistband circumference, thread tail onto a tapestry needle, and work tubular cast-off.

## SLEEVES (both alike)

**Note:** Sts will be picked up along the underarm at a different rate for different sizes. Some sizes may require 2 sts to be picked up from 1 cast-on st. Pick up evenly across the underarm section.

Using larger needles suitable for working small circumferences in the round and yarn A, beg at centre of underarm, pick up and knit 5 (4, 3, 5, 6, 6, 5, 7, 6) sts evenly along underarm, k across 51 (53, 54, 56, 64, 64, 73, 76, 78) held sleeve sts, pick up and knit 4 (3, 3, 5, 5, 5, 5, 7, 6) sts evenly along underarm, PM to indicate beg of round. 60 (60, 60, 66, 75, 75, 83, 90, 90) sts

## Sizes 1, 2, 3, 5, 6, 8 & 9 ONLY

Knit 68 (70, 70, -, 74, 76, -, 80, 80) rounds or until Sleeve measures approx. 16cm / 6¼" less than desired length.

## Sizes 4 & 7 ONLY

**Rounds 1-5:** Knit.

**Round 6 (dec):** K1, k2tog, k to last 3 sts, ssk, k1. 2 sts dec

Rep rounds 1-6 a further 2 (3) times. 60 (75) sts

Knit 56 (52) rounds or until Sleeve measures approx. 16cm / 6¼" less than desired length.

## ALL sizes again

Joining yarns B, C, D and E when necessary, using stranded colourwork technique, begin working Chart E as foll:

**Round 1:** Work round 1 of Chart E working the 15-st rep 4 (4, 4, 4, 5, 5, 5, 6, 6) times across round.

Working next round of chart each time, continue as set until Chart E is complete.

Break yarns A, C, D and E, continue with yarn B only.

Knit 1 round.

**Next round (dec):** [K1, k2tog] to end. 40 (40, 40, 40, 50, 50, 50, 60, 60) sts

## Cuff

Change to smaller needles.

**Round 1:** [K1tbl, p1] to end.

Rep round 1 a further 9 times.

Prepare for tubular cast-off as foll:

**Set-up round 1:** [K1, sl1 wyif] to end.

**Set-up round 2:** [ˆSl1 wyib, p1] to end.

Break yarn leaving a tail approx. 3 times the length of the cuff circumference, thread tail onto a tapestry needle, and work tubular cast-off.

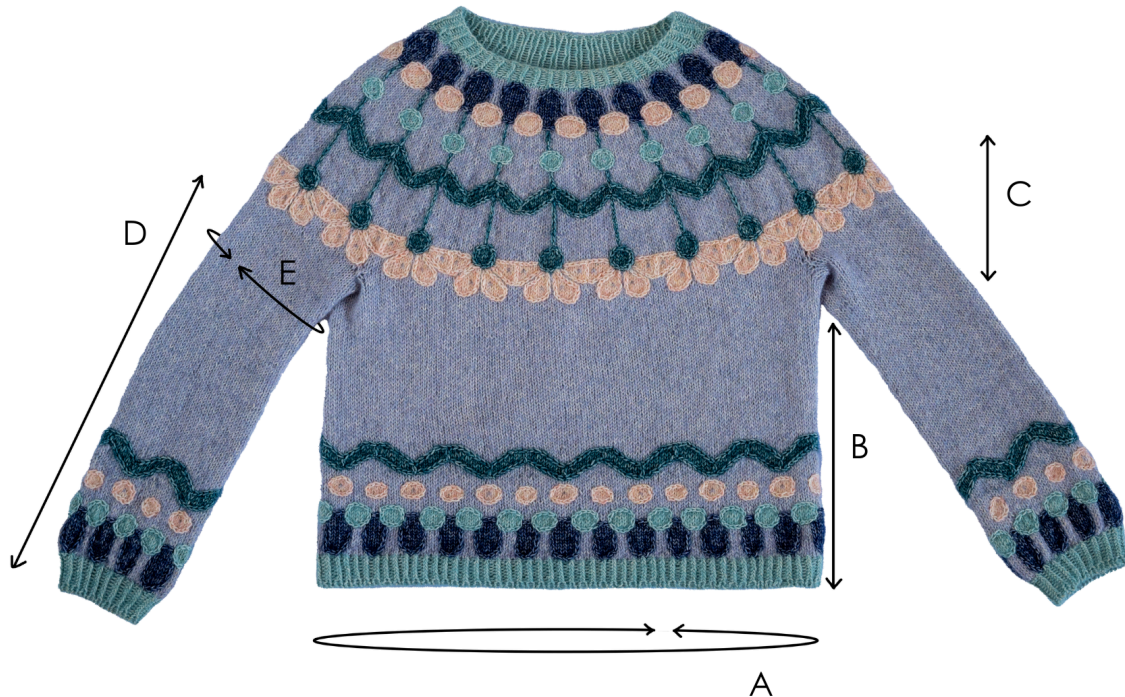
## FINISHING

Weave in ends and block to measurements. Embroider each of the motifs using chain stitch to outline them, then embroider the stems connecting the motifs at the yoke, referring to photos as a guide.

**Enjoy!**



SCHEMATIC



- a. Chest circumference:** 92 (100, 109, 117, 125, 134, 150, 159, 167)cm / 36 (39½, 43, 46, 49¼, 52½, 59, 62½, 66¾)"
- b. Length (hem to underarm):** 30 (31, 32, 33, 35, 36, 36, 37, 38)cm / 12 (12¼, 12½, 13, 13¾, 14, 14, 14½, 15)"
- c. Armhole depth:** 21 (21.5, 22.5, 24.5, 25.5, 26, 27.5, 28.5, 30)cm / 8¼ (8½, 8¾, 9½, 10, 10¼, 11, 11¼, 11¾)"
- d. Sleeve length:** 42 (43, 43, 44.5, 44.5, 46, 46, 47, 47)cm / 16½ (17, 17, 17½, 17½, 18, 18, 18½, 18½)"
- e. Upper arm circumference:** 33.5 (33.5, 33.5, 36.5, 41.5, 41.5, 46, 50, 50)cm / 13¼ (13¼, 13¼, 14½, 16½, 16½, 18, 19¾, 19¾)"

**Paulina Castell Gutiérrez** (she/her), known as Tejer la Trama, is a Chilean-Spanish knitwear designer. She adds something new to every design, encouraging knitters to learn new techniques. Her designs tell a story. Her portfolio includes self-published work and collaborations with dyers, craft stores, and publications like Knit Now and Laine. @tejer.latrama

## Key



Knit



M1R



M1L



Yarn A



Yarn B



Yarn C



Yarn D



Yarn E

Chart A

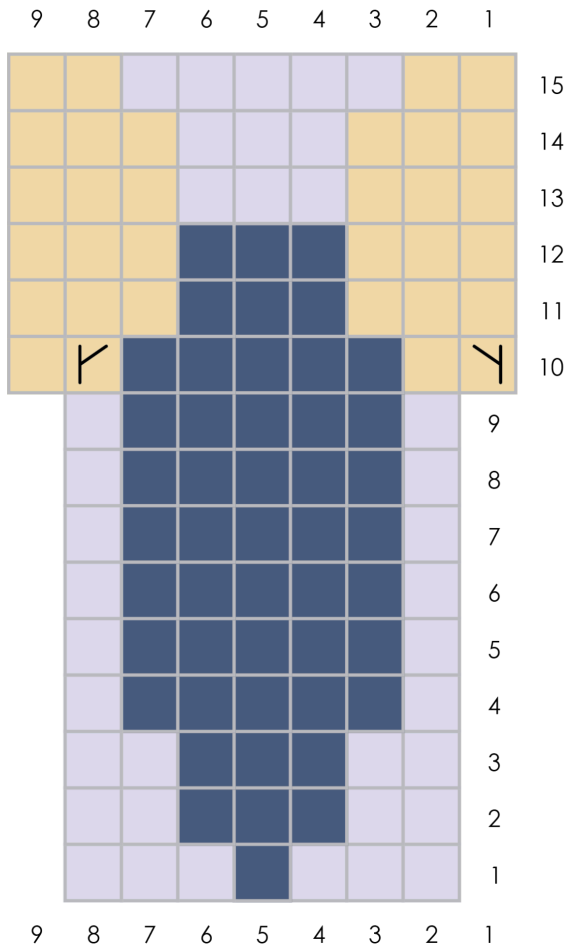


Chart B

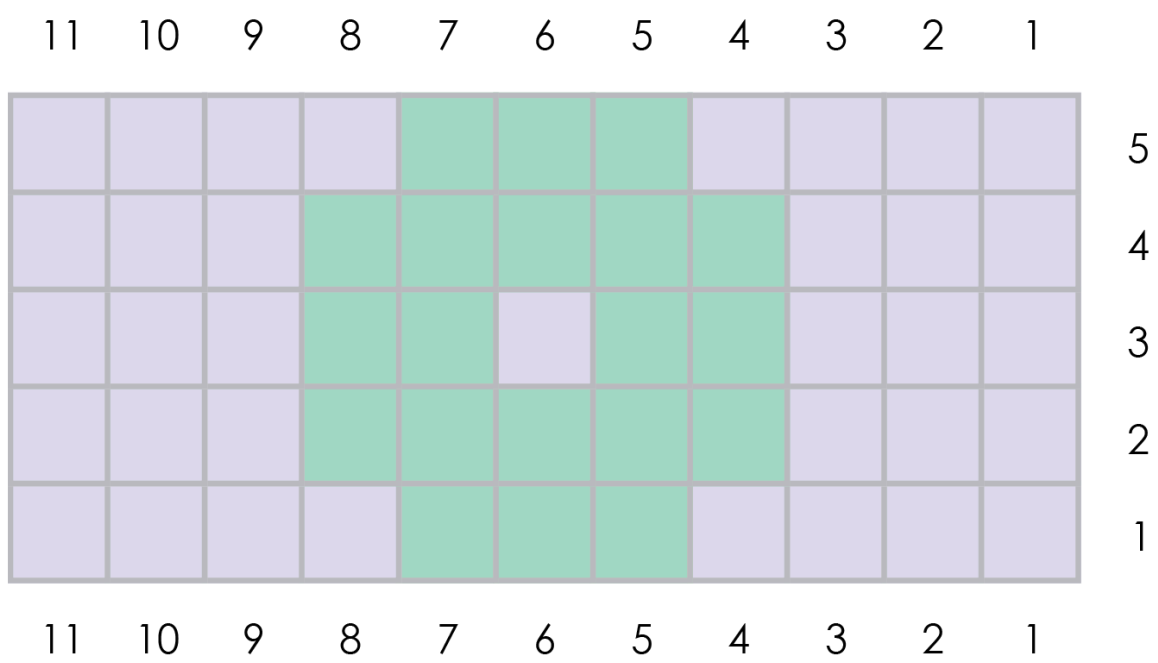


Chart C

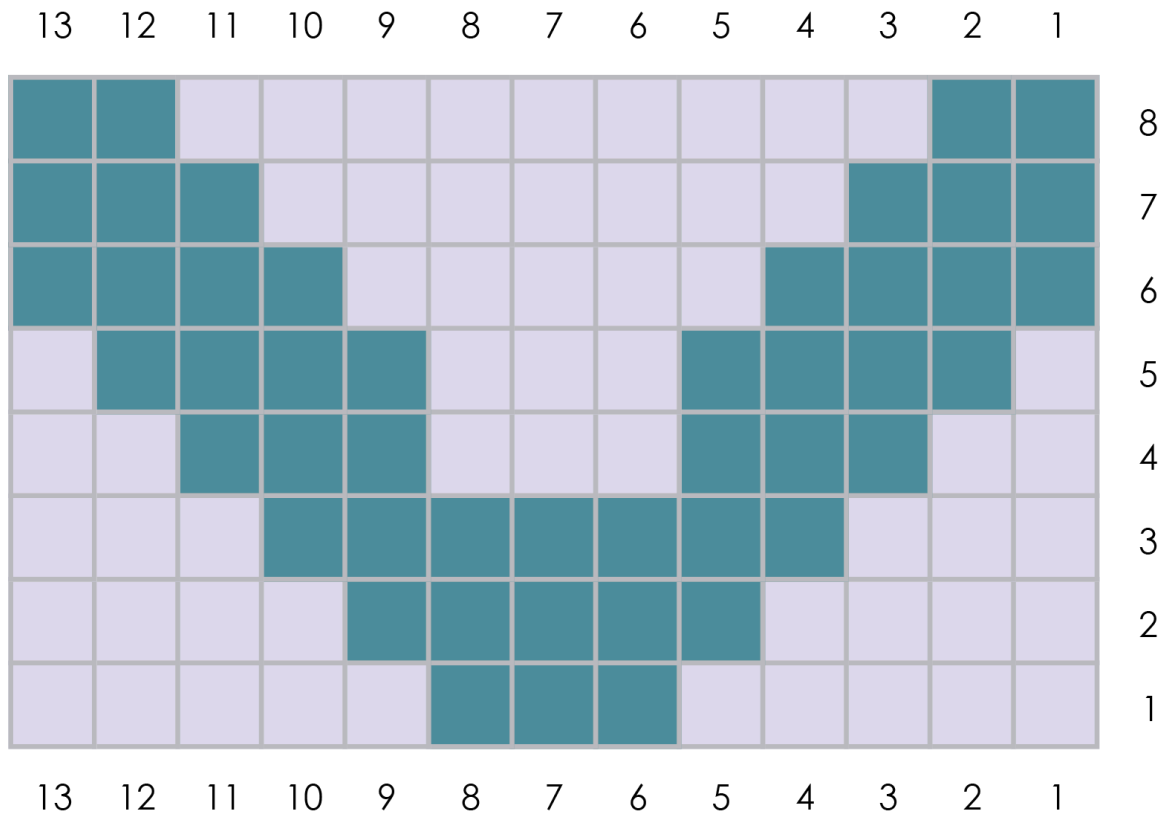


Chart D

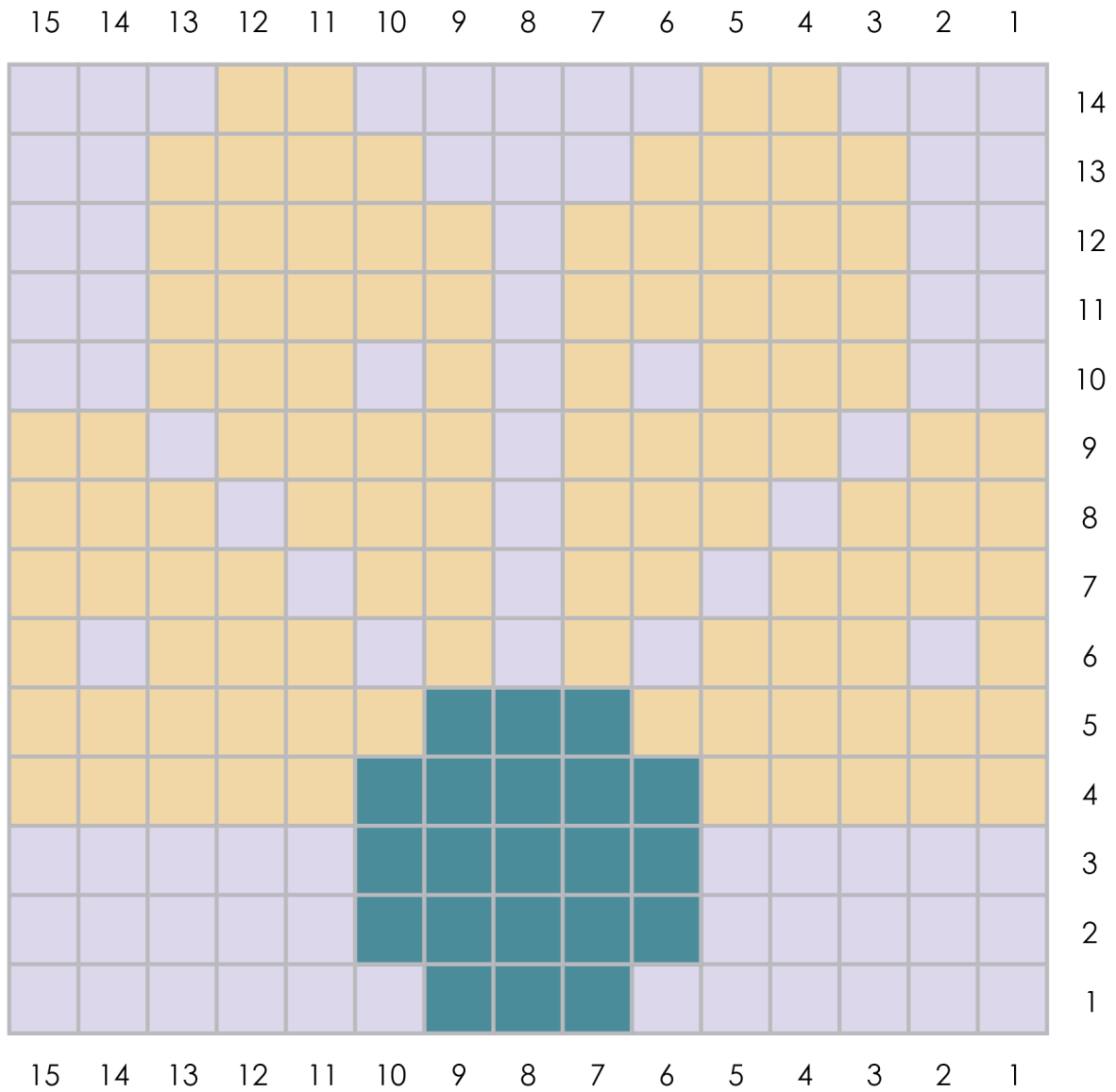


Chart E

