



KNITTING PATTERN

Cloudbusting

Cabled Cardigan

Design: Vera Marcu | Winter 2025

MATERIALS

Pom Pom x Hobbii Garland

Shade: Cloudbusting (31); 11 (12, 13, 14, 16, 16, 18, 20, 22, 25) balls

4.5mm / US 7 circular needle, 100cm / 40" length

4.5mm / US 7 needles suitable for working small circumferences in the round

Always use a needle size that will result in the correct gauge after blocking.

10 (10, 14, 14, 18, 18, 18, 22, 22, 22) stitch markers, cable needle, stitch holder, tapestry needle

YARN QUALITY

 **Garland**, Hobbii x Pom Pom

Worsted weight

70% Cotton, 30% Alpaca

105m / 114yd per 50 g

GAUGE

23 sts & 30 rows = 10cm / 4" over Garland Chart A/B on 4.5mm needles after blocking.

19 sts & 30 rows = 10cm / 4" over Horizontal Stripes patt on 4.5mm needles after blocking.

QUESTIONS

If you have any questions regarding this pattern, please feel free to email us at support@hobbii.com. Please make sure to include the pattern's name and number.

Happy Crafting!

SIZES

1 (2, 3, 4, 5, 6, 7, 8, 9, 10)

MEASUREMENTS

Finished chest circumference: 93 (103, 112, 120, 130, 138, 147, 162, 170, 179)cm / 36½ (40½, 44, 47¼, 51, 54¼, 57¾, 63¾, 66¾, 70½)" – to be worn with 15-25.5cm / 6-10" positive ease.

Model has a 96.5cm / 38" chest circumference and is wearing a size 2.

PATTERN INFORMATION

Cloudbusting is worked flat from the top down. Short rows are used for shaping the shoulders on the back piece; after picking up stitches for the fronts and shaping the shoulders, the rest of the cardigan body is worked in one piece. Stitches for sleeves are picked up and sleeves are worked in the round. Lastly, stitches are picked up on the front edges and around the back neck and the collar is worked flat in Garter stitch.

HASHTAGS FOR SOCIAL MEDIA

#CloudbustingCardigan #PomPomXHobbii

BUY THE YARN HERE

<https://shop.hobbii.com/cloudbusting-cabled-cardigan>

Pattern



ABBREVIATIONS

Beg: beginning

Dec: decrease

Est: established

Foll: follow(s)/following

G st: Garter stitch

K: knit

k2tog: knit 2 stitches together

LH: left hand

Patt: pattern (i.e. work in pattern)

PM: place marker

P: purl

P2tog: purl 2 stitches together

Rem: remain(s)/remaining

Rep: repeat

RH: right hand

RS: right side

Sl: slip

Ssk: slip 2 stitches knitwise one at a time, knit together through the back loops

Ssp: slip 2 stitches knitwise one at a time, purl together through the back loops

SM: slip marker

st(s): stitch(es)

St st: stocking stitch (stockinette): knit on RS rows, purl on WS rows

Tog: together

WS: wrong side

STITCH GLOSSARY

German Short Rows:

Create DS: Bring yarn to front, slip the first stitch as if to purl, bring yarn over the needle to the back of your work and pull tight (it will look like a double stitch = DS)

Resolving Double Stitches: When you encounter the DS on subsequent rows, work DS in pattern, inserting needle through both legs of the DS and treating it as one stitch.

2x2 Rib (flat):

Row 1 (RS): [K2, p2] to end.

Row 2 (WS): [K2, p2] to end.

Rep rows 1-2 for pattern.

Horizontal Stripes Pattern

Rounds 1-3: Knit.

Rounds 4-5: Purl.

Rep rows 1-5 for pattern.

2x2 Rib (in the round):

Round 1: [K2, p2] to end.

Rep round 1 for pattern.

2/2 LC Sl 2 sts to cable needle, hold at front, k2, k2 from cable needle.

2/2 RC Sl 2 sts to cable needle, hold at back, k2, k2 from cable needle.

2/2 LPC Sl 2 sts to cable needle, hold at front, p2, k2 from cable needle.

2/2 RPC Sl 2 sts to cable needle, hold at back, k2, p2 from cable needle.

2/2/2 RPC Sl 4 sts to cable needle, hold at back, k2, sl last 2 sts from cable needle back to LH needle, p2, k2 from cable needle.

WRITTEN INSTRUCTIONS FOR CHARTS

Garland Chart A

Worked over 22 sts

Row 1 (RS): 2/2 LC, [k2, p2] 3 times, k2, 2/2 RC.

Row 2 (WS): P4, [p2, k2] 3 times, p6.

Row 3: K2, 2/2 LPC, p2, 2/2/2 RPC, p2, 2/2 RPC, k2.

Row 4: [P2, k2] 5 times, p2.

Row 5: K2, p2, 2/2 LC, k2, p2, k2, 2/2 RC, p2, k2.

Row 6: [P2, k2, p4] twice, p2, k2, p2.

Row 7: K2, p2, k2, 2/2 LPC, p2, 2/2 RPC, k2, p2, k2.

Row 8: [P2, k2] 5 times, p2.

Row 9: [K2, p2] 5 times, k2.

Rows 10-14: Rep rows 4-8.

Row 15: [K2, p2] twice, 2/2/2 RPC, [p2, k2] twice.

Rows 16-21: Rep rows 8-9.

Row 22: Rep row 8.

Row 23: Rep row 15.

Rows 24-47: Rep rows 8-9.

Row 48: Rep row 8.

Rep rows 1-48 for pattern.

Garland Chart B

Worked over 22 sts

Row 1 (RS): [K2, p2] 5 times, k2.

Row 2 (WS): [P2, k2] 5 times, p2.

Rows 3-24: Rep rows 1-2.
Row 25: 2/2 LC, [k2, p2] 3 times, k2, 2/2 RC.
Row 26: P4, [p2, k2] 3 times, p6.
Row 27: K2, 2/2 LPC, p2, 2/2/2 RPC, p2, 2/2 RPC, k2.
Row 28: Rep row 2.
Row 29: K2, p2, 2/2 LC, k2, p2, k2, 2/2 RC, p2, k2.
Row 30: [P2, k2, p4] twice, p2, k2, p2.
Row 31: K2, p2, k2, 2/2 LPC, p2, 2/2 RPC, k2, p2, k2.
Row 32: Rep row 2.
Rows 33-34: Rep rows 1-2.
Rows 35-38: Rep rows 29-32.
Row 39: [K2, p2] twice, 2/2/2 RPC, [p2, k2] twice.
Row 40: Rep row 2.
Rows 41-46: Rep rows 1-2.
Row 47: Rep row 39.
Row 48: Rep row 2.
 Rep rows 1-48 for pattern.

PATTERN BEGINS

BACK

Using the long-tail method, cast on 102 (113, 123, 132, 142, 151, 161, 178, 185, 195) sts.

Set-up row (WS): P3, [k2, p2] 9 (10, 11, 12, 13, 14, 15, 17, 17, 18) times, PM, k24 (27, 29, 30, 32, 33, 35, 36, 43, 45) sts, PM, [p2, k2] to last 3 sts, p3.

Last row establishes 2x2 Rib and Garter stitch patt.

Shoulder shaping

Shape shoulders using German short rows as foll:

Short row 1 (RS): K1, work 2x2 Rib in patt to marker, SM, k to marker, SM, work 2x2 Rib in patt to last 7 (7, 8, 9, 10, 11, 11, 13, 13, 14) sts, turn.

Short row 2 (WS): Create DS, work 2x2 Rib in patt to marker, SM, k to marker, SM, work 2x2 Rib in patt to last 7 (7, 8, 9, 10, 11, 11, 13, 13, 14) sts, turn.

Short row 3: Create DS, work 2x2 Rib in patt to marker, SM, k to marker, SM, work 2x2 Rib in patt to 7 (7, 8, 9, 10, 11, 11, 13, 13, 14) sts before DS, turn.

Short row 4-8: Rep Short row 3 a further 5 times.

Short row 9: Create DS, work 2x2 Rib in patt to marker, SM, k to marker, SM, resolving DS as you pass them work 2x2 Rib in patt to last st, k1.

Next row: P1, work 2x2 Rib in patt to marker, SM, k to marker, SM, resolving DS as you pass them work 2x2 Rib in patt to last st, p1.

Garland Cable

Establish Garland Charts for your size as foll:

Note: Sizes 1 and 2 use only Garland Chart A until lower body section.

Sizes 1 & 2 ONLY

Row 1 (RS): K1, [k2, p2] 4 (5) times, PM, work row 1 of Garland Chart A over next 22 sts, SM, k to marker, SM, work row 1 of Garland Chart A over next 22 sts, PM, [p2, k2] to last st, k1.

Row 2 (WS): P1, [p2, k2] to marker, SM, work row 2 of Garland Chart A, SM, k to marker, SM, work row 2 of Garland Chart A, SM, [k2, p2] to last st, p1.

Row 3 (RS): K1, [k2, p2] to marker, SM, work next row of Garland Chart A, SM, k to marker, SM, work next row of Garland Chart A, SM, [p2, k2] to last st, k1.

Row 4 (WS): P1, [p2, k2] to marker, SM, work next row of Garland Chart A, SM, k to marker, SM, work next row of Garland Chart A, SM, [k2, p2] to last st, p1.

Size 3 ONLY

Row 1 (RS): K1, work row 1 of Garland Chart B over next 22 sts, PM, p2, PM, work row 1 of Garland Chart A over next 22 sts, SM, k to marker, SM, work row 1 of Garland Chart A over next 22 sts, PM, p2, PM, work row 1 of Garland Chart B over next 22 sts, k1.

Row 2 (WS): P1, work row 2 of Garland Chart B, SM, k2, SM, work row 2 of Garland Chart A, SM, k to marker, SM, work row 2 of Garland Chart A, SM, k2, SM, work row 2 of Garland Chart B, p1.

Row 3 (RS): K1, work next row of Garland Chart B, SM, p2, SM, work next row of Garland Chart A, SM, k to marker, SM, work next row of Garland Chart A, SM, p2, SM, work next row of Garland Chart B, k1.

Row 4 (WS): P1, work next row of Garland Chart B, SM, k2, SM, work next row of Garland Chart A, SM, k to marker, SM, work next row of Garland Chart A, SM, k2, SM, work next row of Garland Chart B, p1.

Size 4 ONLY

Row 1 (RS): K1, work row 1 of Garland Chart B over next 22 sts, PM, p2, k2, p2, PM, work row 1 of Garland Chart A over next 22 sts, SM, k to marker, SM, work row 1 of Garland Chart A over next 22 sts, PM, p2, k2, p2, PM, work row 1 of Garland Chart B over next 22 sts, k1.

Row 2 (WS): P1, work row 2 of Garland Chart B, SM, k2, p2, k2, SM, work row 2 of Garland Chart A, SM, k to marker, SM, work row 2 of Garland Chart A, SM, k2, p2, k2, SM, work row 2 of Garland Chart B, p1.

Row 3 (RS): K1, work next row of Garland Chart B, SM, p2, k2, p2, SM, work next row of Garland Chart A, SM, k to marker, SM, work next row of Garland Chart A, SM, p2, k2, p2, SM, work next row of Garland Chart B, k1.

Row 4 (WS): P1, work next row of Garland Chart B, SM, k2, p2, k2, SM, work next row of Garland Chart A, SM, k to marker, SM, work next row of Garland Chart A, SM, k2, p2, k2, SM, work next row of Garland Chart B, p1.

Sizes 5, 6 & 7 ONLY

Row 1 (RS): K1, work row 1 of Garland Chart B over next 22 sts, PM, p2, k2, p2, PM, work row 1 of Garland Chart A over next 22 sts, PM, [p2, k2] 1 (2, 3) times, SM, k to marker, SM, [k2, p2] 1 (2, 3) times, PM, work row 1 of Garland Chart A over next 22 sts, PM, p2, k2, p2, PM, work row 1 of Garland Chart B over next 22 sts, k1.

Row 2 (WS): P1, work row 2 of Garland Chart B, SM, k2, p2, k2, SM, work row 2 of Garland Chart A, SM, [k2, p2] 1 (2, 3) times, SM, k to marker, SM, [p2, k2] 1 (2, 3) times, SM, work row 2 of Garland Chart A, SM, k2, p2, k2, SM, work row 2 of Garland Chart B, p1.

Row 3 (RS): K1, work next row of Garland Chart B, SM, p2, k2, p2, SM, work next row of Garland Chart A, SM, [p2, k2] 1 (2, 3) times, SM, k to marker, SM, [k2, p2] 1 (2, 3) times, SM, work next row of Garland Chart A, SM, p2, k2, p2, SM, work next row of Garland Chart B, k1.

Row 4 (WS): P1, work next row of Garland Chart B, SM, k2, p2, k2, SM, work next row of Garland Chart A, SM, [k2, p2] 1 (2, 3) times, SM, k to marker, SM, [p2, k2] 1 (2, 3) times, SM, work next row of Garland Chart A, SM, k2, p2, k2, SM, work next row of Garland Chart B, p1.

Sizes 8 & 9 ONLY

Row 1 (RS): K1, work row 1 of Garland Chart B over next 22 sts, PM, p2, PM, work row 1 of Garland Chart A over next 22 sts, PM, p2, PM, work row 1 of Garland Chart B over next 22 sts, SM, k to marker, SM, work row 1 of Garland Chart B over next 22 sts, PM, p2, PM, work row 1 of Garland Chart A over next 22 sts, PM, p2, PM, work row 1 of Garland Chart B over next 22 sts, k1.

Row 2 (WS): P1, work row 2 of Garland Chart B, SM, k2, SM, work row 2 of Garland Chart A, SM, k2, SM, work row 2 of Garland Chart B, SM, k to marker, SM, work row 2 of Garland Chart B, SM, k2, SM, work row 2 of Garland Chart A, SM, k2, SM, work row 2 of Garland Chart B, p1.

Row 3 (RS): K1, work next row of Garland Chart B, SM, p2, SM, work next row of Garland Chart A, SM, p2, SM, work next row of Garland Chart B, SM, k to marker, SM, work next row of Garland Chart B, SM, p2, SM, work next row of Garland Chart A, SM, p2, SM, work next row of Garland Chart B, k1.

Row 4 (WS): P1, work next row of Garland Chart B, SM, k2, SM, work next row of Garland Chart A, SM, k2, SM, work next row of Garland Chart B, SM, k to marker, SM, work next row of Garland Chart B, SM, k2, SM, work next row of Garland Chart A, SM, k2, SM, work next row of Garland Chart B, p1.

Size 10 ONLY

Row 1 (RS): K1, work row 1 of Garland Chart B over next 22 sts, PM, p2, PM, work row 1 of Garland Chart A over next 22 sts, PM, p2, PM, work row 1 of Garland Chart B over next 22 sts, p2, k2, SM, k to marker, SM, k2, p2, work row 1 of Garland Chart B over next 22 sts, PM, p2, PM, work row 1 of Garland Chart A over next 22 sts, PM, p2, PM, work row 1 of Garland Chart B over next 22 sts, k1.

Row 2 (WS): P1, work row 2 of Garland Chart B, SM, k2, SM, work row 2 of Garland Chart A, SM, k2, SM, work row 2 of Garland Chart B, k2, p2, SM, k to marker, SM, p2, k2, work row 2 of Garland Chart B, SM, k2, SM, work row 2 of Garland Chart A, SM, k2, SM, work row 2 of Garland Chart B, p1.

Row 3 (RS): K1, work next row of Garland Chart B, SM, p2, SM, work next row of Garland Chart A, SM, p2, SM, work next row of Garland Chart B, p2, k2, SM, k to marker, SM, k2, p2, work next row of Garland Chart B, SM, p2, SM, work next row of Garland Chart A, SM, p2, SM, work next row of Garland Chart B, k1.

Row 4 (WS): P1, work next row of Garland Chart B, SM, k2, SM, work next row of Garland Chart A, SM, k2, SM, work next row of Garland Chart B, k2, p2, SM, k to marker, SM, p2, k2, work next row of Garland Chart B, SM, k2, SM, work next row of Garland Chart A, SM, k2, SM, work next row of Garland Chart B, p1.

ALL sizes again

Working next row of charts each time, continue working Garland Charts between markers until Back measures 17 (18, 19, 19, 20, 21, 23, 26, 28, 30)cm / 6¾ (7, 7½, 7½, 7¾, 8¼, 9, 10¼, 11, 11¾)" from cast-on edge, measured at shoulder edge of piece, ending with a WS row.

Make a note of last chart row worked.

Break yarn and place sts on hold.

RIGHT FRONT SHOULDER

With RS facing, starting at cast-on shoulder edge and ending at the G st section, pick up and knit 40 (44, 48, 52, 56, 60, 64, 72, 72, 76) sts.

Set-up row (WS): P3, [k2, p2] to last st, p1.

Last row establishes 2x2 Rib patt.

Shoulder shaping

Shape shoulders using German short rows as foll:

Next row (RS): K1, work 2x2 Rib in patt to last st, k1.

Short row 1 (WS): P1, work 2x2 Rib in patt to last 7 (7, 8, 9, 10, 11, 11, 13, 13, 14) sts, turn.

Short row 2: Create DS, work 2x2 Rib in patt to last st, k1.

Short row 3: P1, work 2x2 Rib in patt to 7 (7, 8, 9, 10, 11, 11, 13, 13, 14) sts before DS, turn.

Short rows 4-8: Rep Short rows 2-3 twice, then rep Short row 2 only once.

Next row (WS): P1, resolving DS as you pass them work 2x2 Rib in patt to last st, p1.

Garland Cable

Establish Garland Charts for your size as foll:

Sizes 1 & 2 ONLY

Row 1 (RS): K1, [k2, p2] 4 (5) times, PM, work row 1 of Garland Chart A over next 22 sts, k1.

Row 2 (WS): P1, work row 2 of Garland Chart A, SM, [k2, p2] to last st, p1.

Row 3 (RS): K1, [k2, p2] to marker, SM, work next row of Garland Chart A, k1.

Row 4 (WS): P1, work next row of Garland Chart A, SM, [k2, p2] to last st, p1.

Size 3 ONLY

Row 1 (RS): K1, work row 1 of Garland Chart B over next 22 sts, PM, p2, PM, work row 1 of Garland Chart A over next 22 sts, k1.

Row 2 (WS): P1, work row 2 of Garland Chart A, SM, k2, SM, work row 2 of Garland Chart B, p1.

Row 3 (RS): K1, work next row of Garland Chart B, SM, p2, SM, work next row of Garland Chart A, k1.

Row 4 (WS): P1, work next row of Garland Chart A, SM, k2, SM, work next row of Garland Chart B, p1.

Size 4 ONLY

Row 1 (RS): K1, work row 1 of Garland Chart B over next 22 sts, PM, p2, k2, p2, PM, work row 1 of Garland Chart A over next 22 sts, k1.

Row 2 (WS): P1, work row 2 of Garland Chart A, SM, k2, p2, k2, SM, work row 2 of Garland Chart B, p1.

Row 3 (RS): K1, work next row of Garland Chart B, SM, p2, k2, p2, SM, work next row of Garland Chart A, k1.

Row 4 (WS): P1, work next row of Garland Chart A, SM, k2, p2, k2, SM, work next row of Garland Chart B, p1.

Sizes 5, 6 & 7 ONLY

Row 1 (RS): K1, work row 1 of Garland Chart B over next 22 sts, PM, p2, k2, p2, PM, work row 1 of Garland Chart A over next 22 sts, PM, [p2, k2] 1 (2, 3) times, k1.

Row 2 (WS): P1, [p2, k2] 1 (2, 3) times, SM, work row 2 of Garland Chart A, SM, k2, p2, k2, SM, work row 2 of Garland Chart B, p1.

Row 3 (RS): K1, work next row of Garland Chart B, SM, p2, k2, p2, SM, work next row of Garland Chart A, SM, [p2, k2] 1 (2, 3) times, k1.

Row 4 (WS): P1, [p2, k2] 1 (2, 3) times, SM, work next row of Garland Chart A, SM, k2, p2, k2, SM, work next row of Garland Chart B, p1.

Sizes 8 & 9 ONLY

Row 1 (RS): K1, work row 1 of Garland Chart B over next 22 sts, PM, p2, PM, work row 1 of Garland Chart A over next 22 sts, PM, p2, PM, work row 1 of Garland Chart B over next 22 sts, k1.

Row 2 (WS): P1, work row 2 of Garland Chart B, SM, k2, SM, work row 2 of Garland Chart A, SM, k2, SM, work row 2 of Garland Chart B, p1.

Row 3 (RS): K1, work next row of Garland Chart B, SM, p2, SM, work next row of Garland Chart A, SM, p2, SM, work next row of Garland Chart B, k1.

Row 4 (WS): P1, work next row of Garland Chart B, SM, k2, SM, work next row of Garland Chart A, SM, k2, SM, work next row of Garland Chart B, p1.

Size 10 ONLY

Row 1 (RS): K1, work row 1 of Garland Chart B over next 22 sts, PM, p2, PM, work row 1 of Garland Chart A over next 22 sts, PM, p2, PM, work row 1 of Garland Chart B over next 22 sts, p2, k3.

Row 2 (WS): P3, k2, work row 2 of Garland Chart B, SM, k2, SM, work row 2 of Garland Chart A, SM, k2, SM, work row 2 of Garland Chart B, p1.

Row 3 (RS): K1, work next row of Garland Chart B, SM, p2, SM, work next row of Garland Chart A, SM, p2, SM, work next row of Garland Chart B, p2, k3.

Row 4 (WS): P3, k2, work next row of Garland Chart B, SM, k2, SM, work next row of Garland Chart A, SM, k2, SM, work next row of Garland Chart B, p1.

ALL sizes again

Working next row of charts each time, continue working Garland Charts between markers until Right Front measures 17 (18, 19, 19, 20, 21, 23, 26, 28, 30)cm / 6¾ (7, 7½, 7½, 7¾, 8¼, 9, 10¼, 11, 11¾)" from picked up sts, measured at shoulder edge of piece, ending with WS row to match final chart row of Back.

Break yarn and place sts on hold.

LEFT FRONT

With RS facing, starting with last st of the G st section, pick up and knit 40 (44, 48, 52, 56, 60, 64, 72, 72, 76) sts.

Set-up row (WS): P3, [k2, p2] to last st, p1.

Last row establishes 2x2 Rib patt.

Shoulder shaping

Shape shoulders using German short rows as foll:

Short row 1 (RS): K1, work 2x2 Rib in patt to last 7 (7, 8, 9, 10, 11, 11, 13, 13, 14) sts, turn.

Short row 2 (WS): Make DS, work 2x2 Rib in patt to last st, p1.

Short row 3: K1, work 2x2 Rib in patt to 7 (7, 8, 9, 10, 11, 11, 13, 13, 14) sts before DS, turn.

Short rows 4-8: Rep Short rows 2-3 twice, then rep Short row 2 only once.

Next row (RS): K1, resolving DS as you pass them work 2x2 Rib in patt to last st, k1.

Next row (WS): P1, work 2x2 Rib in patt to last st, p1.

Garland Cable

Establish Garland Charts for your size as foll:

Sizes 1 & 2 ONLY

Row 1 (RS): K1, work row 1 of Garland Chart A over next 22 sts, PM, [p2, k2] to last st, k1.

Row 2 (WS): P1, [p2, k2] to marker, SM, work row 2 of Garland Chart A, p1.

Row 3 (RS): K1, work next row of Garland Chart A, SM, [p2, k2] to last st, k1.

Row 4 (WS): P1, [p2, k2] to marker, SM, work next row of Garland Chart A, p1.

Size 3 ONLY

Row 1 (RS): K1, work row 1 of Garland Chart A over next 22 sts, PM, p2, PM, work row 1 of Garland Chart B over next 22 sts, k1.

Row 2 (WS): P1, work row 2 of Garland Chart B, SM, k2, SM, work row 2 of Garland Chart A, p1.

Row 3 (RS): K1, work next row of Garland Chart A, SM, p2, SM, work next row of Garland Chart B, k1.

Row 4 (WS): P1, work next row of Garland Chart B, SM, k2, SM, work next row of Garland Chart A, p1.

Size 4 ONLY

Row 1 (RS): K1, work row 1 of Garland Chart A over next 22 sts, PM, p2, k2, p2, PM, work row 1 of Garland Chart B over next 22 sts, k1.

Row 2 (WS): P1, work row 2 of Garland Chart B, SM, k2, p2, k2, SM, work row 2 of Garland Chart A, p1.

Row 3 (RS): K1, work next row of Garland Chart A, SM, p2, k2, p2, SM, work next row of Garland Chart B, k1.

Row 4 (WS): P1, work next row of Garland Chart B, SM, k2, p2, k2, SM, work next row of Garland Chart A, p1.

Sizes 5, 6 & 7 ONLY

Row 1 (RS): K1, [k2, p2] 1 (2, 3) times, PM, work row 1 of Garland Chart A over next 22 sts, PM, p2, k2, p2, PM, work row 1 of Garland Chart B over next 22 sts, k1.

Row 2 (WS): P1, work row 2 of Garland Chart B, SM, k2, p2, k2, SM, work row 2 of Garland Chart A, SM, [k2, p2] 1 (2, 3) times, p1.

Row 3 (RS): K1, [k2, p2] 1 (2, 3) times, SM, work next row of Garland Chart A, SM, p2, k2, p2, SM, work next row of Garland Chart B, k1.

Row 4 (WS): P1, work next row of Garland Chart B, SM, k2, p2, k2, SM, work next row of Garland Chart A, SM, [k2, p2] 1 (2, 3) times, p1.

Sizes 8 & 9 ONLY

Row 1 (RS): K1, work row 1 of Garland Chart B over next 22 sts, PM, p2, PM, work row 1 of Garland Chart A over next 22 sts, PM, p2, PM, work row 1 of Garland Chart B over next 22 sts, k1.

Row 2 (WS): P1, work row 2 of Garland Chart B, SM, k2, SM, work row 2 of Garland Chart A, SM, k2, SM, work row 2 of Garland Chart B, p1.

Row 3 (RS): K1, work next row of Garland Chart B, SM, p2, SM, work next row of Garland Chart A, SM, p2, SM, work next row of Garland Chart B, k1.

Row 4 (WS): P1, work next row of Garland Chart B, SM, k2, SM, work next row of Garland Chart A, SM, k2, SM, work next row of Garland Chart B, p1.

Size 10 ONLY

Row 1 (RS): K3, p2, work row 1 of Garland Chart B over next 22 sts, PM, p2, PM, work row 1 of Garland Chart A over next 22 sts, PM, p2, PM, work row 1 of Garland Chart B over next 22 sts, k1.

Row 2 (WS): P1, work row 2 of Garland Chart B, SM, k2, SM, work row 2 of Garland Chart A, SM, k2, SM, work row 2 of Garland Chart B, k2, p3.

Row 3 (RS): K3, p2, work next row of Garland Chart B, SM, p2, SM, work next row of Garland Chart A, SM, p2, SM, work next row of Garland Chart B, k1.

Row 4 (WS): P1, work next row of Garland Chart B, SM, k2, SM, work next row of Garland Chart A, SM, k2, SM, work next row of Garland Chart B, k2, p3.

ALL sizes again

Working next row of charts each time, continue working Garland Charts between markers until Left Front measures 17 (18, 19, 19, 20, 21, 23, 26, 28, 30)cm / 6¾ (7, 7½, 7½, 7¾, 8¼, 9, 10¼, 11, 11¾)" from picked up sts, measured at shoulder edge of piece, ending with WS row to match final chart row of Back. Do not break yarn.

LOWER BODY

Join Fronts and Back

Note: Sizes 1, 2 and 6 only start working Garland Chart B under the armhole, on the 22 sts between new markers, beginning on the same row number that is being worked for established Garland Chart A.

Sizes 1 & 2 ONLY

Next row (RS): Beg with Left Front, k1, work next row of Garland Chart A, SM, [p2, k2] 1 (2) times, p2, PM, [k2, p2] twice, k2, p1, working across held Back sts, p1, [k2, p2] twice, k2, PM, [p2, k2] 1 (2) times, p2, SM, work next row of Garland Chart A, SM, k to marker, SM, work next row of Garland Chart A, SM, [p2, k2] 1 (2) times, p2, PM, [k2, p2] twice, k2, p1, working across held Right Front sts, p1, [k2, p2] twice, k2, PM, [p2, k2] 1 (2) times, p2, SM, work next row of Garland Chart A, k1. 182 (201) sts

Next row (WS): P1, work next row of Garland Chart A, SM, [k2, p2] 1 (2) times, k2, SM, work next row of Garland Chart B (see Note), SM, [k2, p2] 1 (2) times, k2, SM, work next row of Garland Chart A, SM, k to marker, SM, work next row of Garland Chart A, SM, [k2, p2] 1 (2) times, k2, SM, work next row of Garland Chart B (see note), SM, [k2, p2] 1 (2) times, k2, SM, work next row of Garland Chart A, p1.

Size 3 ONLY

Next row (RS): Beg with Left Front, k1, work next row of Garland Chart A, SM, p2, SM, work next row of Garland Chart B, PM, p1, working across held Back sts, p1, PM, work next row of Garland Chart B, SM, p2, SM, work next row of Garland Chart A, SM, k to marker, SM, work next row of Garland Chart A, SM, p2, SM, work next row of Garland Chart B, PM, p1, working across held Right Front sts, p1, PM, work next row of Garland Chart B, SM, p2, SM, work next row of Garland Chart A, k1. 219 sts

Next row (WS): P1, work next row of Garland Chart A, SM, k2, SM, work next row of Garland Chart B, SM, k2, SM, work next row of Garland Chart B, SM, k2, SM, work next row of Garland Chart A, SM, k to marker, SM, work next row of Garland Chart A, SM, k2, SM, work next row of Garland Chart B, SM, k2, SM, work next row of Garland Chart B, SM, k2, SM, work next row of Garland Chart A, p1.

Size 4 ONLY

Next row (RS): Beg with Left Front, k1, work next row of Garland Chart A, SM, p2, k2, p2, SM, work next row of Garland Chart B, PM, p1, cast on 4 sts using the backwards loop method, working across held Back sts, p1, PM, work next row of Garland Chart B, SM, p2, k2, p2, SM, work next row of Garland Chart A, SM, k to marker, SM, work next row of Garland Chart A, SM, p2, k2, p2, SM, work next row of Garland Chart B, PM, p1, cast on 4 sts using the backwards loop method, working across held Right Front sts, p1, PM, work next row of Garland Chart B, SM, p2, k2, p2, SM, work next row of Garland Chart A, k1. 244 sts

Next row (WS): P1, work next row of Garland Chart A, SM, k2, p2, k2, SM, work next row of Garland Chart B, SM, k2, p2, k2, SM, work next row of Garland Chart B, SM, k2, p2, k2, SM, work next row of Garland Chart A, SM, k to marker, SM, work next row of Garland Chart A, SM, k2, p2, k2, SM, work next row of Garland Chart B, SM, k2, p2, k2, SM, work next row of Garland Chart B, SM, k2, p2, k2, SM, work next row of Garland Chart A, p1.

Size 5, 6 & 7 ONLY

Next row (RS): Beg with Left Front, k1, [k2, p2] 1 (2, 3) times, SM, work next row of Garland Chart A, SM, p2, k2, p2, SM, work next row of Garland Chart B, PM, p1, cast on 4 sts using the backwards loop method, working across held Back sts, p1, PM, work next row of Garland Chart B, SM, p2, k2, p2, SM, work next row of Garland Chart A, SM, [p2, k2] 1 (2, 3) times, SM, k to marker, SM, [k2, p2] 1 (2, 3) times, SM, work next row of Garland Chart A, SM, p2, k2, p2, SM, work next row of Garland Chart B, PM, p1, cast on 4 sts using the backwards loop method, working across held Right Front sts, p1, PM, work next row of Garland Chart B, SM, p2, k2, p2, SM, work next row of Garland Chart A, SM, [p2, k2] 1 (2, 3) times, k1. 262 (279, 297) sts

Next row (WS): P1, [p2, k2] 1 (2, 3) times, SM, work next row of Garland Chart A, SM, k2, p2, k2, SM, work next row of Garland Chart B, SM, k2, p2, k2, SM, work next row of Garland Chart B, SM, k2, p2, k2, SM, work next row of Garland Chart A, SM, [k2, p2] 1 (2, 3) times, SM, k to marker, SM, [p2, k2] 1 (2, 3) times, SM, work next row of Garland Chart A, SM, k2, p2, k2, SM, work next row of Garland Chart B, SM, k2, p2, k2, SM, work next row of Garland Chart B, SM, k2, p2, k2, SM, work next row of Garland Chart A, SM, [k2, p2] 1 (2, 3) times, p1.

Sizes 8 & 9 ONLY

Next row (RS): Beg with Left Front, k1, work next row of Garland Chart B, SM, p2, SM, work next row of Garland Chart A, SM, p2, SM, work next row of Garland Chart B, PM, p1, working

across held Back sts, p1, PM, work next row of Garland Chart B, SM, p2, SM, work next row of Garland Chart A, SM, p2, SM, work next row of Garland B, SM, k to marker, SM, work next row of Garland Chart B, SM, p2, SM, work next row of Garland Chart A, SM, p2, SM, work next row of Garland Chart B, PM, p1, working across held Right Front sts, p1, PM, work next row of Garland Chart B, SM, p2, SM, work next row of Garland Chart A, SM, p2, SM, work next row of Garland Chart B, k1. 322 (329) sts

Next row (WS): P1, work next row of Garland Chart B, SM, k2, SM, work next row of Garland Chart A, SM, k2, SM, work next row of Garland Chart B, SM, k2, SM, work next row of Garland Chart B, SM, k2, SM, work next row of Garland Chart A, SM, k2, SM, work next row of Garland B, SM, k to marker, SM, work next row of Garland Chart B, SM, k2, SM, work next row of Garland Chart A, SM, k2, SM, work next row of Garland Chart B, SM, k2, SM, work next row of Garland Chart B, SM, k2, SM, work next row of Garland Chart A, SM, k2, SM, work next row of Garland Chart B, p1.

Size 10 ONLY

Next row (RS): Beg with Left Front, k3, p2, work next row of Garland Chart B, SM, p2, SM, work next row of Garland Chart A, SM, p2, SM, work next row of Garland Chart B, PM, p1, working across held Back sts, p1, PM, work next row of Garland Chart B, SM, p2, SM, work next row of Garland Chart A, SM, p2, SM, work next row of Garland Chart B, p2, k2, SM, k to marker, SM, k2, p2, work next row of Garland Chart B, SM, p2, SM, work next row of Garland Chart A, SM, p2, SM, work next row of Garland Chart B, PM, p1, working across held Right Front sts, p1, PM, work next row of Garland Chart B, SM, p2, SM, work next row of Garland Chart A, SM, p2, SM, work next row of Garland Chart B, p2, k3. 347 sts

Next row (WS): P3, k2, work next row of Garland Chart B, SM, k2, SM, work next row of Garland Chart A, SM, k2, SM, work next row of Garland Chart B, SM, k2, SM, work next row of Garland Chart A, SM, k2, SM, work next row of Garland B, k2, p2, SM, k to marker, SM, p2, k2, work next row of Garland Chart B, SM, k2, SM, work next row of Garland Chart A, SM, k2, SM, work next row of Garland Chart B, SM, k2, SM, work next row of Garland Chart B, SM, k2, SM, work next row of Garland Chart A, SM, k2, SM, work next row of Garland Chart B, k2, p3.

ALL sizes again

Working next row of charts each time, continue working across the whole piece, working Garland Charts A and B between markers and G st panel on Back as established.

Work as set until rows 1-48 of charts have been worked a total of 3 times from beginning of piece.

Next row (RS): K1, [k2, p2] to last 3 sts, k3.

Next row (WS): P1, [p2, k2] to last 3 sts, p3.

Work in 2x2 Rib as set until piece measures 33 (32, 33, 33, 35, 34, 34, 34, 37, 40)cm / 13 (12½, 13, 13, 13¾, 13½, 13½, 13½, 14½, 15¾)" from underarm or desired length, ending with a WS row.

Cast off sts kwise.

SLEEVES (both alike)

Beg at centre of underarm, pick up and knit 64 (68, 72, 76, 80, 84, 92, 100, 106, 110) sts evenly around armhole, PM to indicate beg of round.

Working in Horizontal Stripes pattern throughout, work 14 (10, 9, 7, 7, 7, 5, 4, 3, 3) rounds.

Work Dec round on next round as foll:

If Dec round occurs on a knit round: K1, k2tog, k to last 3 sts, ssk, k1. 2 sts dec

If Dec round occurs on a purl round: P1, p2tog, p to last 3 sts, ssp, p1. 2 sts dec

Rep Dec round every 15th (11th, 10th, 8th, 8th, 8th, 8th, 8th, 7th, 7th) round a further 3 (4, 5, 6, 5, 6, 8, 9, 10, 10) times. 56 (58, 60, 62, 68, 70, 74, 80, 84, 88) sts

Work straight until Sleeve measures 40 (39, 39, 39, 38, 37, 35, 33, 32, 30)cm / 15¾ (15¼, 15¼, 15¼, 15, 14½, 13¾, 13, 12½, 12)" or 10cm / 4" less than desired length, ending with Round 1 or 5 of Horizontal Stripes patt.

Next round: *K5 (3, 5, 4, 3, 3, 3, 2, 2, 2) sts, k2tog, repeat from * a further 7 (9, 7, 9, 11, 13, 13, 19, 19, 19) times, knit to beg of round marker. 48 (48, 52, 52, 56, 56, 60, 60, 64, 68) sts

Cuff

Work in 2x2 Rib for 10cm / 4", or until desired length. Cast off sts kwise.

FINISHING

Weave in ends and block to measurements, then pick up sts for edging as foll:

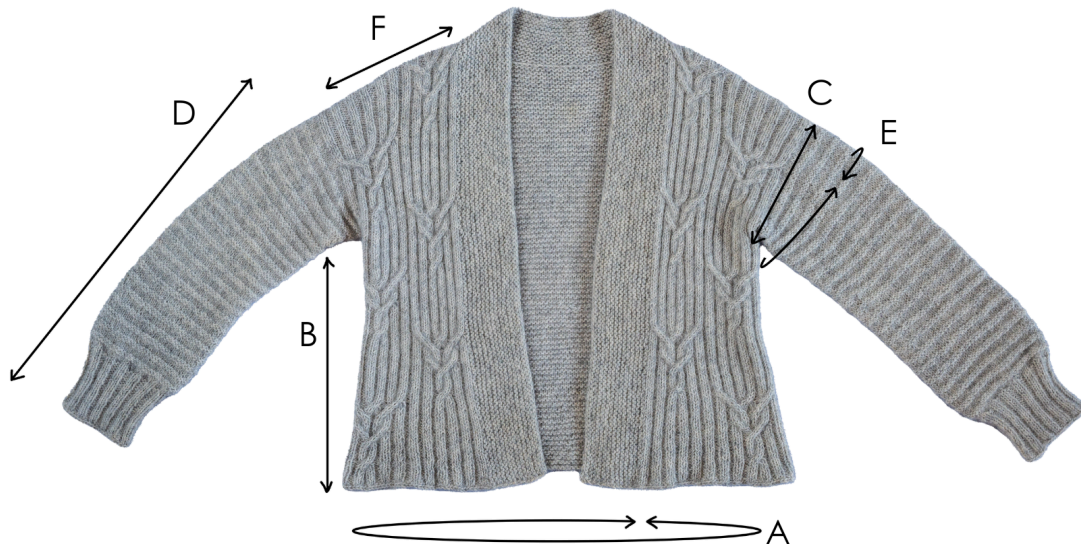
Edging

With RS facing, beg at bottom corner of Right Front, pick up and knit 2 sts for every 3 rows evenly along Right Front edge, then pick up and knit all sts from neck edge of Back, then continue to pick up and knit 2 sts for every 3 rows along Left Front edge to bottom corner of Left Front.

Work in G st until edging measures 6.5 (7.5, 8, 8, 9, 9, 10, 10, 12, 12.5)cm / 2½ (3, 3¼, 3¼, 3½, 3½, 4, 4, 4¾, 5)", ending with a WS row. Cast off sts kwise.

Enjoy!

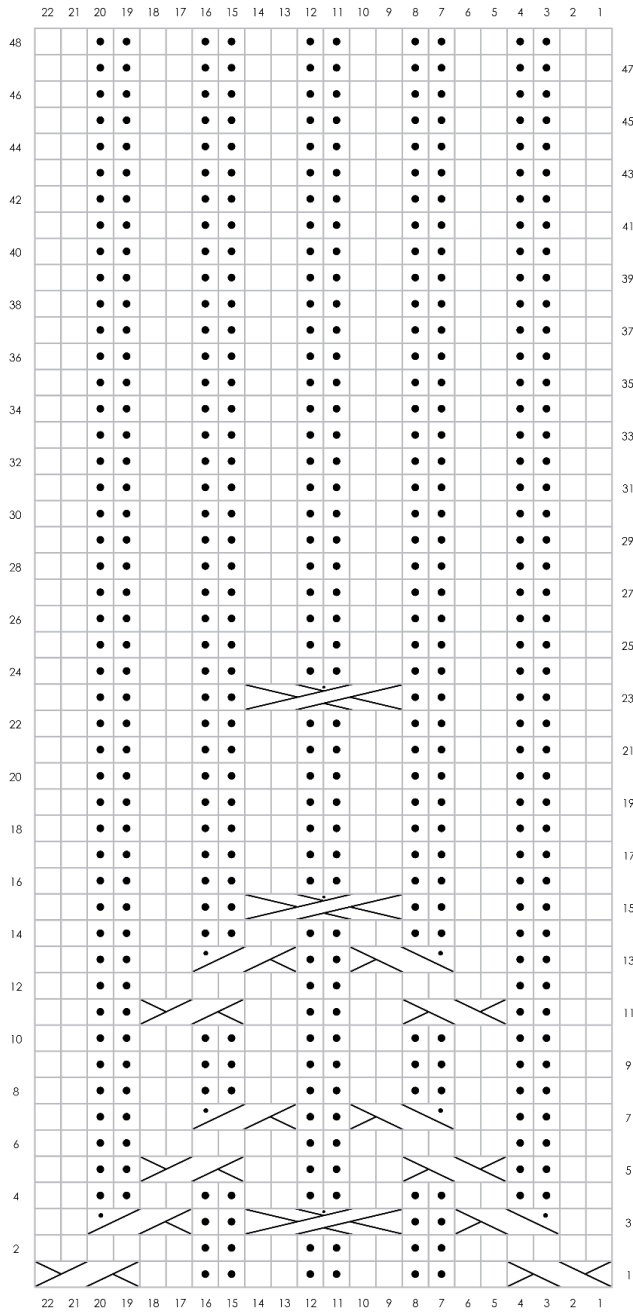
SCHEMATIC



- a. Chest circumference:** 93 (103, 112, 120, 130, 138, 147, 162, 170, 179)cm / 36½ (40½, 44, 47¼, 51¼, 54, 57¾, 63¾, 67, 70½)"
- b. Length (hem to underarm):** 33 (32, 33, 33, 35, 34, 34, 34, 37, 40)cm / 13 (12½, 13, 13, 13¾, 13½, 13½, 13½, 14½, 15¾)"
- c. Armhole depth:** 17 (18, 19, 19, 20, 21, 23, 26, 28, 30)cm / 6¾ (7, 7½, 7½, 7¾, 8¼, 9, 10¼, 11, 11¾)"
- d. Sleeve length:** 50 (49, 49, 49, 48, 47, 45, 43, 42, 40)cm / 19¾ (19¼, 19¼, 19¼, 19, 18½, 17¾, 17, 16½, 15¾)"
- e. Upper arm circumference:** 34 (36, 38, 40, 42, 44, 48, 52, 56, 58)cm / 13½ (14¼, 15, 15¾, 16½, 17¼, 19, 20½, 22, 22¾)"
- f. Shoulder width:** 16 (18, 20, 22, 23, 25, 27, 30, 30, 32)cm / 6¼ (7, 7¾, 8¾, 9, 9¾, 10½, 11¾, 11¾, 12½)"

Vera Marcu (she/her) is a knitwear designer based in Sydney, Australia. She has been a passionate knitter since childhood and her designs reflect her love of fashion, natural fibre yarns and textures. Vera is a musician and, in knitting as well as in music, seeks the wonderful feelings of flow and mindfulness these activities bring. veralovesknitting.com.au / [@veralovesknitting](https://www.instagram.com/veralovesknitting)

Chart A



Key



RS: knit
WS: purl



RS: purl
WS: knit



2/2 RC



2/2 LC



2/2 RPC



2/2 LPC



2/2/2 RPC

Chart B

