



KNITTING PATTERN

Arima

Colourwork Pullover

Design: Esti Juango | Winter 2025

pompom x hobbii

MATERIALS

Pom Pom x Hobbii Garland

Shades:

Yarn A: Foad (21); 7 (8, 8, 9, 10, 11, 12, 14, 15, 16) balls

Yarn B: Vinnie (13); 2 (2, 2, 2, 2, 3, 3, 3, 3, 3) balls

4mm / US 6 circular needle, 80-150cm / 32-60" length (depending on size worked) AND needles suitable for working small circumferences in the round.

3.5mm / US 4 circular needle, 80-150cm / 32-60" length (depending on size worked) AND needles suitable for working small circumferences in the round.

Note: Begin the yoke using needles suitable for working small circumferences in the round, then change to circular needles as the circumference increases.

Always use a needle size that will result in the correct gauge after blocking.

12 (13, 14, 15, 16, 17, 18, 19, 20, 21) stitch markers (including one unique for beginning of round), 2 locking markers, stitch holders

YARN QUALITY

 **Garland**, Hobbii x Pom Pom

Worsted weight

70% Cotton, 30% Alpaca

105m / 114yd per 50 g

QUESTIONS

If you have any questions regarding this pattern, please feel free to email us at support@hobbii.com. Please make sure to include the pattern's name and number.

Happy Crafting!

SIZES

1 (2, 3, 4, 5, 6, 7, 8, 9, 10)

MEASUREMENTS

Finished chest circumference: 90 (100, 110, 120, 130, 140, 150, 160, 170, 180)cm / 35½ (39¼, 43¼, 47¼, 51¼, 55, 59, 63, 67, 70¾)" – to be worn with approx. 20cm / 8" positive ease

Model has a 86cm / 34" chest circumference and is wearing a size 3.

PATTERN INFORMATION

The sweater has a seamless yoke construction and is worked from top to bottom. Once the yoke is knitted, the body and then the sleeves are worked separately. Optional short rows are worked to raise the back if preferred.

HASHTAGS FOR SOCIAL MEDIA

#ArimaPullover #PomPomXHobbii

BUY THE YARN HERE

<https://shop.hobbii.com/arima-colourwork-pullover>

Pattern



GAUGE

22.5 sts & 28 rows = 10cm / 4" over colourwork chart on 4mm needles after blocking.

20 sts & 28 rows = 10cm / 4" over St st pattern on 4mm needles after blocking.

ABBREVIATIONS

Beg: beginning

Dec: decrease

Foll: follow(s)/following

Inc: increase

K: knit

k2tog: knit 2 stitches together

LH: left hand

M1L: Make 1 Left; pick up strand between the two needles from the front to back with the tip of left needle, knit into the back of this stitch

M1R: Make 1 Right; pick up strand between the two needles from back to front with the tip of left needle, knit into the front of this stitch

Patt: pattern (i.e. work in pattern)

PM: place marker

P: purl

p2tog: purl 2 stitches together

rem: remain(s)/Remaining

rep: repeat

RH: right hand

RS: right side

Sl: slip

ssk: slip 2 stitches knitwise one at a time, knit together through the back loops

SM: slip marker

st(s): stitch(es)

St st: stocking stitch (stockinette): knit on RS rows, purl on WS rows

tog: together

wyib: with yarn held in back of work

WS: wrong side

Yo: yarn over needle and into working position

STITCH GLOSSARY

1x1 Rib (flat):

Row 1 (RS): P1, [k1, p1] to end.

Row 2 (WS): K1, [p1, k1] to end.

Rep rows 1-2 for pattern.

1x1 Rib (in the round):

Round 1: [K1, p1] to end.

Rep round 1 for pattern.

Kyok: K the next st and leave it on the LH needle, yo and k the same st again. *2 sts inc*

German Short Rows:

Create DS: Bring yarn to front, slip the first stitch as if to purl, bring yarn over the needle to the back of your work and pull tight (it will look like a double stitch = DS)

Resolving Double Stitches: When you encounter the DS on subsequent rows, work DS in pattern, inserting needle through both legs of the DS and treating it as one stitch.

PATTERN BEGINS

Using smaller needles, yarn A and the long-tail cast on method, cast on 96 (96, 104, 104, 112, 120, 120, 120, 120) sts. PM for beginning of round and join for working in the round being careful not to twist the stitches.

Work in 1x1 Rib until neck measures 4cm / 1½" from cast-on edge.

Size 1 ONLY

Go to "Yoke".

Sizes 2, 3, 4, 5, 6, 7, 8, 9 & 10 ONLY

Next round (inc): Increase for your size as foll:

Size 2: *Kyok, p1, [k1, p1] 11 times; rep from * 3 times. *8 sts inc; 104 sts*

Size 3: *Kyok, p1, [k1, p1] 12 times; rep from * 3 times. *8 sts inc; 112 sts*

Size 4: *Kyok, p1, [k1, p1] 5 times, kyok, p1, [k1, p1] 6 times; rep from * 3 times. *16 sts inc; 120 sts*

Size 5: *Kyok, p1, [k1, p1] 6 times; rep from * 7 times. *16 sts inc; 128 sts*

Size 6: *Kyok, p1, [k1, p1] 7 times, kyok, p1, [k1, p1] 6 times; rep from * 3 times. *16 sts inc; 136 sts*

Size 7: *Kyok, p1, [k1, p1] 4 times; rep from * 11 times. *24 sts inc; 144 sts*

Size 8: [Kyok, p1, [k1, p1] 3 times] 8 times, *kyok, p1, [k1, p1] 3 times, kyok, p1, [k1, p1] twice; rep from * 3 times. *32 sts inc; 152 sts*

Size 9: *Kyok, p1, [k1, p1] twice; rep from * 19 times. *40 sts inc; 160 sts*

Size 10: *Kyok, p1, [k1, p1] twice, kyok, p1, k1, p1; rep from * 11 times. *48 sts inc; 168 sts*

YOKE

Change to larger needles.

Begin colourwork chart, working each round from right to left, joining yarn B when necessary, working the increases where indicated and working the 8-st chart rep 12 (13, 14, 15, 16, 17, 18, 19, 20, 21) times across round. You may find it helpful to place a marker between each chart rep. Continue working from chart until row 51 of chart is complete. 264 (286, 308, 330, 352, 374, 396, 418, 440, 462) sts

Break yarn B. Work straight in St st with yarn A until yoke measures 20.5 (21, 22, 22.5, 24, 25, 26, 27, 28, 29)cm / 8 (8¼, 8½, 8¾, 9½, 9¾, 10¼, 10½, 11, 11½)" from beg of colourwork chart.

Sizes 2, 4, 6, 8 & 10 ONLY

Next round (inc): K1, M1L, k to last st, M1R, k1. - (288, -, 332, -, 376, -, 420, -, 464) sts

ALL sizes again

Divide Body and Sleeves

Note: This is a good place to put the sts on scrap yarn and try on the yoke. If you need to add extra length, work additional rounds in St st before continuing.

Round 1: *K79 (89, 98, 107, 116, 126, 135, 145, 154, 158) sts, place next 53 (55, 56, 59, 60, 62, 63, 65, 66, 74) sts on hold for sleeve, using the backwards-loop method cast on 11 (11, 12, 13, 14, 14, 15, 15, 16, 22) sts for armhole; rep from * once, PM for new beg of round at right side of garment. 180 (200, 220, 240, 260, 280, 300, 320, 340, 360) sts

Back short row shaping (optional)

This section is optional. Short rows will raise the back and cause the neck to be more fitted. If preferred, omit this section and go to "Body".

Short row 1 (RS): K1, turn work.

Short row 2 (WS): Create DS, p102 (112, 123, 134, 145, 155, 166, 176, 187, 203), turn work.

Short row 3 (RS): Create DS, k to DS, resolve DS, k2, turn work.

Short row 4 (WS): Create DS, p to DS, resolve DS, p2, turn work.

Repeat Short rows 3-4 a further 2 (2, 3, 3, 4, 4, 4, 4, 4, 4) times.

Next row (RS): Create DS, k to DS, resolve DS, k to beg of round.

Next round: Knit, resolving rem DS as you pass them.

BODY

Next round: K84 (94, 104, 113, 123, 133, 142, 152, 162, 169) sts, PM for left side, k to last 6 (6, 6, 7, 7, 7, 8, 8, 8, 11) sts, PM for new beg of round at right side.

Note: There should be 90 (100, 110, 120, 130, 140, 150, 160, 170, 180) sts between markers for front and back, with markers sitting at centre of underarm cast-on sts.

Work in St st until Body measures 16 (16, 16, 19, 19, 21, 21, 23, 23, 25)cm/ 6¼ (6¼, 6¼, 7½, 7½, 8¼, 8¼, 9, 9, 9¾)" from underarm or 4cm / 1½" less than desired length.

Split Hem

Front and back hems are worked separately.

Front hem

Next row (RS): K to marker, remove marker and turn work, leaving rem sts on hold for back hem. 90 (100, 110, 120, 130, 140, 150, 160, 170, 180) sts

Next row (WS): [K1, p1] to end.

Row 1 (RS): S11 wyib, p1, [k1, p1] to end.

Row 2 (WS): S11 wyib, p1, [k1, p1] to end.

Rep rows 1-2 until ribbing measures 4cm / 1½", ending with a WS row. Cast off loosely in patt.

Back hem

With RS facing, rejoin yarn A to back hem sts and work as for front hem until ribbing measures 6cm / 2½", ending with a WS row. Cast off loosely in patt.

SLEEVES

Set-up round: Using larger needles and yarn A, beg at centre of underarm, pick up and knit 5 (5, 6, 6, 7, 7, 7, 7, 8, 11) sts along underarm cast-on, knit across held sleeve sts, pick up and knit 6 (6, 6, 7, 7, 7, 8, 8, 8, 11) sts, PM for beg of round. 64 (66, 68, 72, 74, 76, 78, 80, 82, 96) sts
Work in St st until sleeve measures 4cm / 1½" from underarm, then begin sleeve shaping as foll:

Knit 4 (5, 5, 4, 4, 4, 4, 4, 4, 3) rounds.

Dec round: K1, k2tog, k to last 3 sts, ssk, k1. 2 sts dec

Rep last 5 (6, 6, 5, 5, 5, 5, 5, 4) rounds a further 13 (13, 13, 14, 15, 15, 15, 15, 16, 19) times. 36 (38, 40, 42, 42, 44, 46, 48, 48, 56) sts

Work straight in St st until sleeve measures 33 (34, 34, 35, 35, 35, 36, 36, 36, 36)cm / 13 (13½, 13½, 13¾, 13¾, 14¼, 14¼, 14¼, 14¼)" or 4cm / 1½" less than desired length.

Change to smaller needles.

Work in 1x1 Rib until rib measures 4cm / 1½".

Cast off sts using tubular cast-off method.

FINISHING

Weave in ends and wet block to measurements.

Enjoy!

SCHEMATIC



a. Chest circumference: 90 (100, 110, 120, 130, 140, 150, 160, 170, 180)cm / 35½ (39¼, 43¼, 47¼, 51¼, 55, 59, 63, 67, 70¾)"

b. Front length (hem to underarm): 20 (20, 20, 23, 23, 25, 25, 27, 27, 29)cm / 7¾ (7¾, 7¾, 9, 9, 9¾, 9¾, 10¾, 10¾, 11½)"

c. Yoke depth: 20.5 (21, 22, 22.5, 24, 25, 26, 27, 28, 29)cm / 8 (8¼, 8½, 8¾, 9½, 9¾, 10¼, 10¾, 11, 11½)"

d. Sleeve length: 37 (38, 38, 39, 39, 39, 40, 40, 40, 40)cm / 14½ (15, 15, 15¼, 15¼, 15¼, 15¾, 15¾, 15¾, 15¾)"

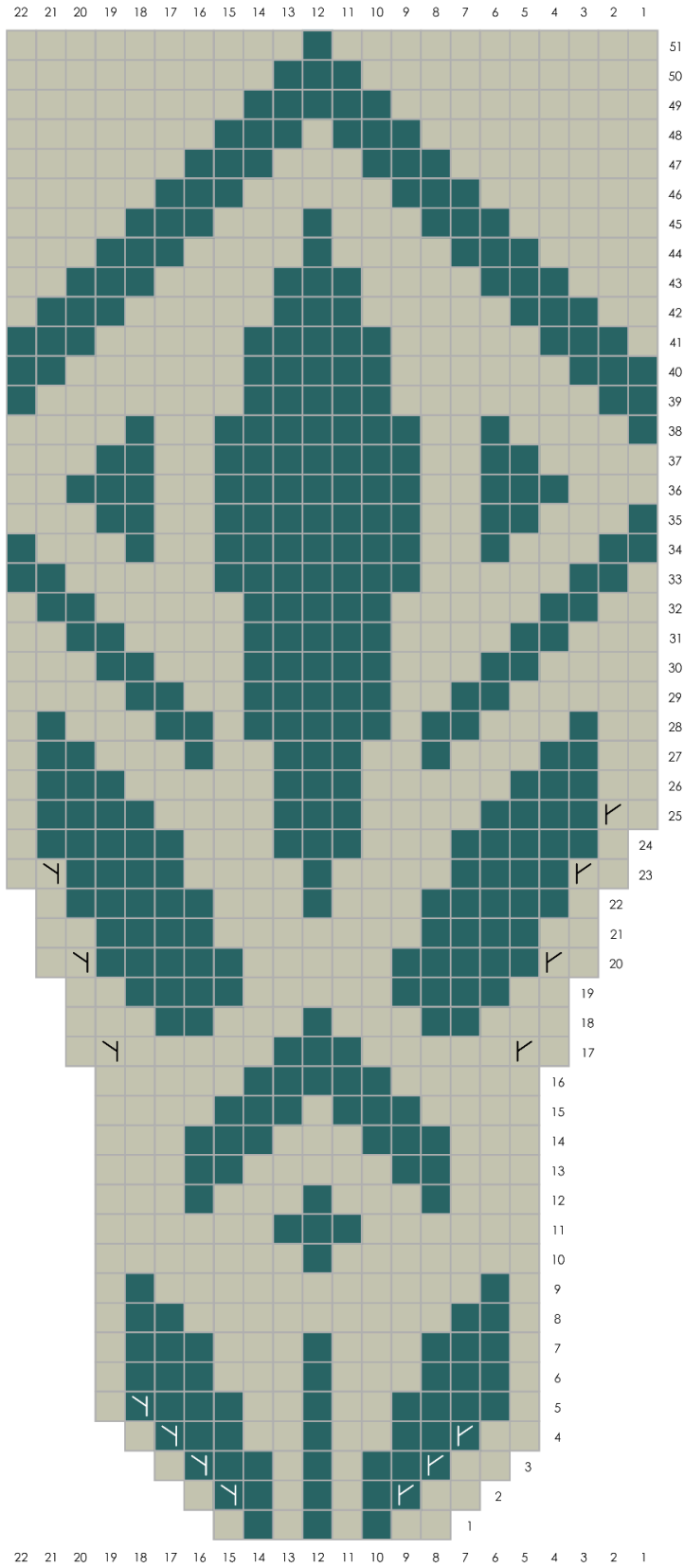
e. Upper arm circumference: 32 (33, 34, 36, 37, 38, 39, 40, 41, 48)cm / 12½ (13, 13½, 14¼, 14½, 15, 15¼, 15¾, 16¼, 18¾)"

f. Wrist circumference: 18 (19, 20, 21, 21, 22, 23, 24, 24, 28)cm / 7 (7½, 7¾, 8¼, 8¼, 8¾, 9, 9½, 9½, 11)"

g. Neck circumference: 42.5 (42.5, 46, 46, 50, 53, 53, 53, 53, 53)cm / 16¾ (16¾, 18¼, 18¼, 19½, 21, 21, 21, 21, 21)"

Esti Juango (she/her) is a knitwear designer based in Pamplona (North of Spain). She loves designing lace patterns which bring you to the present moment while knitting them.
@ileradebu / www.ileradebu.com

Chart



Key



Yarn A



Yarn B



Knit



M1R



M1L