



CROCHET PATTERN

Nahia

Sweater

Design: Noemoncrochet | Hobbii Design

MATERIALS

(7, 8, 9) (10, 11, 12) (13, 14, 15) skeins of Friends Extra Fine Merino col. 17

Crochet hook 4 mm / US G/6
(or size needed to obtain gauge)

Yarn needle
Scissors
Stitch markers
Tape measure

YARN QUALITY

 Friends Extra Fine Merino, Hobbii

100% Wool

50 g (1.75 oz) = 165 m (180 yds)

GAUGE

15tr x 7 rows = 10 cm x 10 cm / 4" x 4"

Important: All measurements given in the pattern are blocked gauge.

SIZE

(1, 2, 3) (4, 5, 6) (7, 8, 9)

MEASUREMENTS

Front / Back panel width: (48, 54, 61) (68, 74, 81) (88, 94, 101) cm / (19", 21", 24") (26.5", 29", 31.5") (34.5", 37", 39.5")

Length: (49, 51, 53) (53, 55, 55) (57, 59, 61) cm / (19", 20", 20.5") (20.5", 21.5", 21.5") (22", 23", 24")

The sweater is designed to be worn with a positive ease between 15 - 30 cm / 6" - 11.8" around the bust. If you want a tighter garment, choose a smaller size. The model wears a Size M.

PATTERN INFORMATION

If you like oversized garments, you will love the Nahia sweater. This pattern combines different crochet techniques for a romantic and original look.

The pattern consists of both written instructions and photos to guide you. The sweater is made of 4 panels, worked from top to bottom. 1 panel from the front, 1 for the back and 2 for the sleeves.

HASHTAGS FOR SOCIAL MEDIA

#hobbiidesign #hobbiinahia #hobbiigreatbasics

BUY THE YARN HERE

<https://shop.hobbii.com/nahia-sweater>

QUESTIONS

If you have any questions regarding this pattern, please feel free to email us at support@hobbii.com

Please make sure to include the pattern's name and number.

Happy Crafting!

Pattern



ABBREVIATIONS

ch = chain

sc = single crochet

tr = treble crochet

trw 3rd loop = treble crochet work in third loop

scw 3rd loop = single crochet work in third loop

5 tr shell = 5 treble crochet in 1 stitch

5 tr tog = 5 treble crochet closed together

2 tr tog = 2 treble crochet closed together

sk = skip

Bubble = bubble stitch

st (s) = stitch (es)

tr+3ch+tr = treble crochet, 3ch, treble crochet in 1 stitch

Rep = repeat

a repeat the instructions between * *

INFO AND TIPS

You can modify the length of the garment by repeating more or less rows of rows 24-25.

The turning chains count as a stitch.

The sweater is designed to be worn with a positive ease of between 15 - 30 cm / 6" - 11.8" around the bust. If you want a tighter garment, choose a smaller size.

There are no increases or decreases, so you should always have the same amount of sts as on Row 1.

How to do a treble crochet in third loop:

Make a double yarn over, insert the hook into the third loop, the one shown in the second photo. Pull out the thread and there will be 4 rings on the hook, and pull the thread through two rings a total of three times.



1.



2.



3.



4.



5.



6.

How to work the bubble stitch:

Make a yarn over, insert the hook into the stitch and pull out the yarn, make a yarn over and pull through the two loops of the hook (as if you were going to make a double crochet but without finishing it) repeat 5 times. Yarn over and close all the loops together. Single crochet in the next stitch.



1.



2.



3.

How to work 5 tr together

Make an unfinished tr in each st of the 5 shell tr from the previous row and close them all together.



1.



2.

How to work 2 tr together

Make 2 tr without finishing on top of the treble crochets of the tr+3ch+tr sequence of the previous row and close the 2 together.

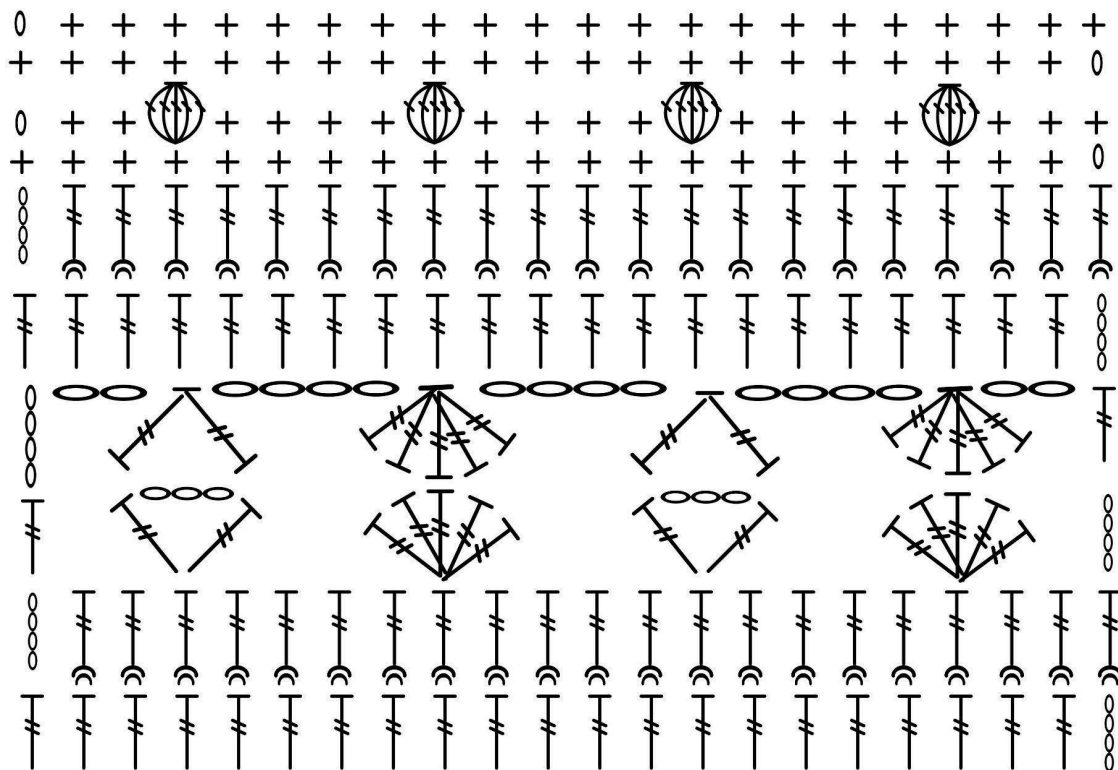


1.



2.

Diagram from row 3 to row 12 on the front and back panels



KEY

					
trw 3rd loop	5 tr shell	tr+3ch+tr	5 tr tog	2 tr tog	bubble
0	+				
ch	sc				

BODY

Back and front panel (Make two)

Row 1: (73, 83, 93) (103, 113, 123) (133, 143, 153) ch, starting in the 2nd ch from hook, 1sc in each ch until the end (72, 82, 92) (102, 112, 122) (132, 142, 152) sts. Ch 1, turn.

Row 2: sc along the row. Ch 4, turn.

Row 3: tr along the row. Ch 4, turn.

Row 4: trw 3rd loop along the entire row, except in the last st, do tr normal. Ch 4, turn.

Row 5: sk 2 st, * 5 tr shell, sk 4st, tr+3ch+tr *, sk 4 st, Rep * a * to the last 3 sts, sk 2 st, tr in the last stitch. Ch 4, turn.

Row 6: Ch 2, *5 tr tog, 4ch, 2 tr tog*, 4ch, Rep * a * to the last 3 sts, 2ch, tr in the last st. Ch 4, turn.

Row 7: tr along the entire row. Ch 4, turn.

Row 8: trw 3rd loop along entire row. Ch 1, turn

Row 9: Sc along the entire row. Ch 1, turn.

Row 10: sc, sc, * bubble, sc, sc, sc, sc *, Rep * a * until the end of the row. You have to finish with 1 sc in each of the last 3 sts. Ch 1, turn.

Row 11-12: sc along the two rows. Ch 4, turn.

Row 13 -22: Rep from row 3 to row 12. Ch 4, turn.

Row 23: tr along the entire row. Ch 1, turn.

Row 24: scw 3rd loop along entire row. Ch 4, turn.

Row 25: tr along the entire row. Ch 1, turn.

Row 26 to row (48, 50, 52) (52, 54, 54) (56, 58, 60): Repeat rows 24 and 25. Ch 1, turn.

Last row: sc along the entire row.

Sleeves (Make two)

Row 1: (73, 73, 83) (83, 93, 93) (103, 103, 113) ch, starting in the 2nd ch from the hook, 1sc in each ch of the row (72, 72, 82) (82, 92, 92) (102, 102, 112) sts. Ch1, turn.

Row 2: sc throughout the entire row. Ch 4, turn.

Row 3: tr along the entire row. Ch 1, turn.

Row 4: scw 3rd loop across entire row. Ch 4, turn.

Row 5 - (24, 24, 26) (26, 28, 28) (30, 30, 30): Repeat rows 3 and 4. Ch 4, turn.

Row (25, 25, 27) (27, 29, 29) (31, 31, 31): tr along the row. Ch 4, turn.

Row (26, 26, 28) (28, 30, 30) (32, 32, 32): trw 3rd loop along entire row except last st, make tr normal. Ch 4, turn.

Row (27, 27, 29) (29, 31, 31) (33, 33, 33): sk 2 st, * 5 tr shell, sk 4st, tr+3ch+tr *, sk 4 st, Rep * a * to the last 3 sts, sk 2 st, tr in the last stitch. Ch 4, turn.

Row (28, 28, 30) (30, 32, 32) (34, 34, 34): Ch 2, *5 tr tog, 4ch, 2 tr tog*, 4ch, Rep * a * to the last 3 sts, 2ch, tr in last st. Ch 4, turn.

Row (29, 29, 31) (31, 33, 33) (35, 35, 35): tr along the entire row. Ch 4, turn.

Row (30, 30, 32) (32, 34, 34) (36, 36, 36): trw 3rd loop along the entire row. Ch 1, turn.

Row (31, 31, 33) (33, 35, 35) (37, 37, 37): Sc throughout the entire row. Ch 1, turn.

Row (32, 32, 34) (34, 36, 36) (38, 38, 38): sc, sc,* bubble, sc, sc, sc, sc *, Rep * a * until the end of the row. You have to finish with 1 sc in each of the last 3 sts. Ch 1, turn.

Rows (33-34, 33-34, 35-36) (35-36, 37-38, 37-38) (39-40, 39-40, 39-40): make sc along the two rows. Ch 4, turn.

Row (35, 35, 37) (37, 39, 39) (41, 41, 41): tr along the entire row. Ch 4, turn.

Row (36-44, 36-44, 38-46) (38-46, 40- 48, 40-48) (42-50, 42-50, 42-50): Rep from row (26, 26 28) (28, 30, 30) (32, 32, 32) to row (34, 34, 36) (36, 38, 38) (40, 40, 40) Ch 1, turn .

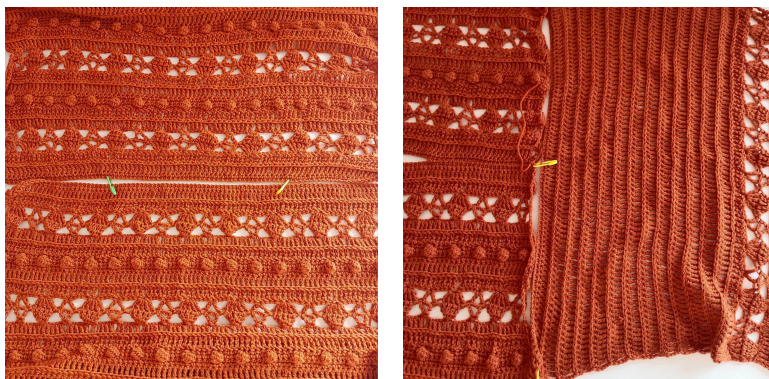
Row (45, 45, 47) (47, 49, 49) (51, 51, 51): sc throughout the entire row.

Mounting

Sew the shoulders and sides of the front and back panels.

Neck opening: (38sts, 40sts, 40sts) (40sts, 42sts, 42sts) (44sts, 46sts, 46sts)

Place a stitch marker in the middle of the starting chain of the sleeve panel and attach this marker to the shoulder joint of the front and back panel. Then join the entire sleeve up to the armhole. Subsequently, close the sides by matching the drawing of both panels.



Done! I hope you enjoy your new garment.