



KNITTING PATTERN

Raya

Kerchief

Design: @bygwensdesign | Hobbii Design



MATERIALS

1 skein of **Divina** color 04

Circular needle 5.5 mm, 50 cm /US 9, 20"

Cable needle

Tapestry needle

Scissors

Measuring tape

YARN QUALITY

 **Divina**, Hobbii

65% Alpaca, 28% Polyamide, 7% Wool

50 g / 1.75 oz = 150 m / 164 yds

GAUGE

16 sts x 21 rows = 10 cm x 10 cm / 4" x 4"

ABBREVIATIONS

k = knit

p = purl

RS = right side

st = stitch

WS = wrong side

3/3 left seed cross = slip 3 stitches to cable needle; hold to front; k3; k1, p1, k1 from cable needle

SIZE

One size

MEASUREMENTS

Width: 8 cm / 3.25"

Length: 132 cm / 52"

PATTERN INFORMATION

The playful Raya Kerchief is your new four-in-one fashion bestie! Knit in luxuriously soft alpaca blend yarn, it's the accessory that adds the fancy without the fuss. Wear it as a trendy kerchief, a classic necktie, a cozy headband, or even a stylish belt - the possibilities are endless! The compliments will roll in when you sport your handmade Raya Kerchief.

TECHNIQUE VIDEOS

https://youtu.be/-fpN_3-szf0

HASHTAGS FOR SOCIAL MEDIA

#hobbiidesign #hobbiiraya

#hobbiiadvent2024 #bytoniandmamagwen

@tlyarncrafts @bygwensdesign

BUY THE YARN HERE

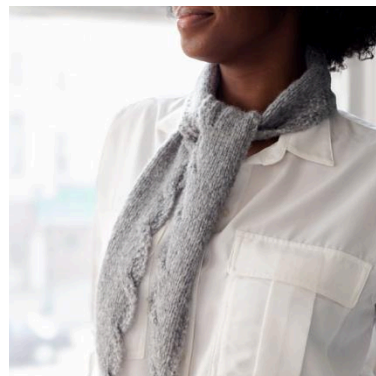
<https://shop.hobbii.com/3rd-sunday-of-advent-knitting-raya-kerchief>

QUESTIONS

If you have any questions regarding this pattern, please feel free to email us at support@hobbii.com. Please make sure to include the pattern's name and number.

Happy Crafting!

Pattern



INFO AND TIPS

Kerchief can be worn around your neck, as a headband, or even as a belt.

Pattern is worked flat.

CONSTRUCTION

Cast on 9 sts using your preferred cast-on method.

Part 1:

Work Cable Chart 1.

After finishing Cable Chart 1 you have 15 sts on your needles.

Part 2:

Row 1 (RS): K1, p1, k3, p1, k7, p1, k1.

Row 2 (WS): K1, p7, k1, p1, k1, p1, k1, p1, k1.

Repeat Rows 1 and 2 for 62 cm / 24", ending with a Row 2 repeat.

Part 3:

Work Cable Chart 2.

After finishing Cable Chart 2 you have 9 sts on your needles.

Bind off 9 sts.

Enjoy your kerchief!

Gwendolyn Jones

@bygwensdesign

Chart 1

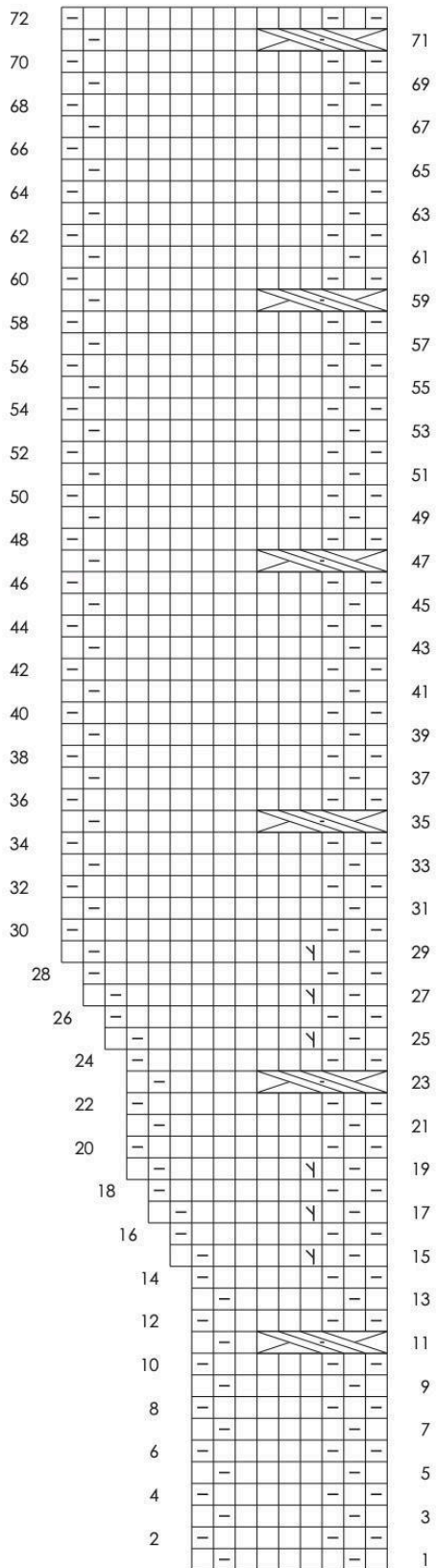
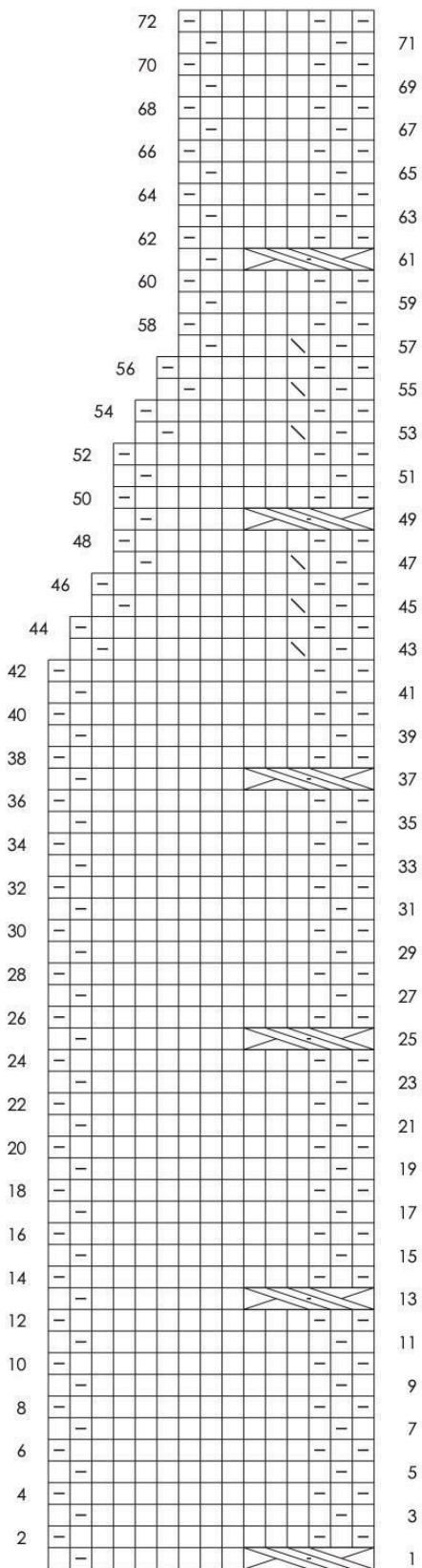







Chart 2



Symbol Key

	K on RS; P on WS
	P on RS; K on WS
	ssk
	make 1 left
	3/3 left seed cross