



CROCHET PATTERN

Wildflowers

Basket

Design: Maggie Trunkhill - Daisy Girl Crochet | Hobbii Design

MATERIALS

Rafaella

2 skeins of color 10

Friends Cotton 8/4

1 skein of color 28

1 skein of color 48

1 skein of color 53

1 skein of color 63

1 skein of color 71

1 skein of color 83

1 skein of color 114

Crochet hook 6 mm / US J / 10

Crochet hook 3 mm / US D/ 3

Tapestry needle

YARN QUALITY

Rafaella, Hobbii

100% Paper raffia

100 g / 3.5 oz = 130-135 m / 142-147 yds



Friends Cotton 8/4, Hobbii

100 % Cotton

50 g / 1.75 oz = 160 m / 174 yds

GAUGE

22 sts x 10 rows = 10 cm x 10 cm / 4" x 4"

SIZE

S (M)

MEASUREMENTS

Width: 15 (15) cm / 6" (6")

Height: 19 (23) cm / 7.5" (9")

PATTERN INFORMATION

This pattern contains two baskets with flowers: a small and medium basket. Each basket requires less than one skein of the Rafaella yarn and is crocheted with a 6 mm (US J/10) crochet hook. The flowers are crocheted separately with the Friends Cotton 8/4 yarn and a 3.00 mm (US D/3) crochet hook. There are three patterns for the flowers. Crochet applique is used to attach the flowers to the basket. There is a photo tutorial in the pattern to explain this process.

HASHTAGS FOR SOCIAL MEDIA

#hobbii design #hobbii makersgonnamake

#hobbii wildflowers

BUY THE YARN HERE

<https://shop.hobbii.com/wildflowers-basket>



QUESTIONS

If you have any questions regarding this pattern, please feel free to email us at

support@hobbii.com

Please make sure to include the pattern's name and number.

Happy Crafting!

Pattern



ABBREVIATIONS

ch = chain

ss = slip stitch

sc = single crochet

hdc = half double crochet

dc = double crochet

tr = treble

flo = front loop only

blo = back loop only

st = st

sp = space

[] indicate that the stitches are worked into the same space

{ } indicate that the stitches will be repeated later in the pattern

INFO AND TIPS

Crochet applique is used to attach the flowers to the basket. At the end of one of the rounds of the flower, the pattern will tell you to fasten off with a long tail (about 12 in (30 cm)). This end will be used to attach the flower to the basket (see photo guide on page 4). The rest of the ends of the flower can be woven in.

The centres of the flowers are attached to the basket, and the petals are not sewn down.

To attach a flower, thread the needle with the long tail. Insert the needle through one of the stitches of the basket and pull through (picture 1 and picture 2). {Insert the needle through the basket and the top of one of the sts from round 1 of the flower and pull through (picture 3 and picture 4). Then, insert the needle through the top of the next stitch of round 1 of the flower and through the basket and pull through (picture 5 and picture 6)}. Repeat {} til each stitch of round 1 of the flower has been connected to the basket. Then, with the long tail, tie a knot inside the basket and weave it in to secure the flower.

Photoguide: How to attach the flowers



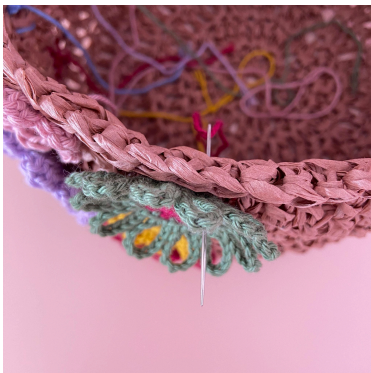
1.



2.



3.



4.



5.



6.

SMALL BASKET

With the Rafaella yarn and a 6 mm (US J/10) crochet hook, ch 4, ss into the first ch to form a ring.

Round 1: Ch 3 (counts as first dc throughout), 11 dc into the ring. Then, ss into the top of the ch 3. (12).

Round 2: [Ch 3, dc]. Into each of the following sts of the previous round, [2 dc]. Then, ss into the top of the ch 3. (24).

Round 3: [Ch 3, dc], dc. { [2 dc], dc}. Repeat {} 10 more times. Then, ss into the top of the ch 3. (36).

Round 4: [Ch 3, dc], 2 dc. { [2 dc], 2 dc}. Repeat {} 10 more times. Then, ss into the top of the ch 3. (48).

Round 5: [Ch 3, dc], 3 dc. { [2 dc], 3 dc}. Repeat {} 10 more times. Then, ss into the top of the ch 3. (60).

Round 6: Ch 3. Then, blo dc into each of the following sts of the previous round. At the end, ss into the top of the ch 3. (60).

Round 7: Ch 3. Then, dc into each of the following sts of the previous round. At the end, ss into the top of the ch 3. (60).

Rounds 8- 11: Same as round 7.

Round 12: [Ch 1 (does not count as a st), flo sc]. Into each of the following sts of the previous round, flo sc. At the end, ss into the first sc, and fasten off. (60).

MEDIUM BASKET

Rounds 1-5: Same as the small basket.

Round 6: [Ch 3, dc], 4 dc. { [2 dc], 4 dc}. Repeat {} 10 more times. Then, ss into the top of the ch 3. (72).

Round 7: Ch 3. Then, blo dc into each of the following sts of the previous round. At the end, ss into the top of the ch 3. (72).

Round 8: Ch 3. Then, dc into each of the following sts of the previous round. At the end, ss into the top of the ch 3. (72).

Rounds 9- 12: Same as round 7.

Round 13: [Ch 1 (does not count as a st), flo sc]. Into each of the following sts of the previous round, flo sc. At the end, ss into the first sc, and fasten off. (72).

FLOWERS

The flowers are crocheted with a 3 mm (US D/3) hook and the Friends Cotton 8/4 yarn. See the charts below for specific information about the colors.

Flower A

With the color of the flower, begin with a magic circle.

Round 1: Ch 2 (counts as the first hdc throughout), 13 hdc into the magic circle. Close the magic circle. Ss into the top of the ch 2. (14).

Round 2: [Ch 1 (counts as the first ss), dc], [tr, dc]. { [Ss, dc], [tr, dc] }. Repeat {} 5 more times. Then, ss into the ch 1 from this round and fasten off with a long tail (about 12 in (30 cm)). (28).

Except the long tail, weave in the ends.

Flower B

With the color of the center, begin with a magic circle.

Round 1: Ch 3 (counts as the first dc throughout), 11 dc into the magic circle. Close the magic circle, and ss into the top of the ch 3. Fasten off with a long tail (about 12 in (30 cm)). (12).

Round 2: Join the color of the petals into any dc st of the previous round. [Ch 1 (counts as the first ss), 2 dc]. { [Ss, 2 dc] }. Repeat {} 10 more times. Ss into the ch 1. (36).

Round 3: Ch 1 (counts as the first ss), [dc, tr], [tr, dc]. { [Ss, [dc, tr], [tr, dc] }. Repeat {} 10 more times. Ss into the ch 1 and fasten off. (60).

Except the long tail, weave in the ends.

Flower C

With the color of the center, begin with a magic circle.

Round 1: Ch 3, 11 dc into the magic circle. Close the magic circle. Ss into the top of the ch 3 and fasten off with a long tail (about 12 in (30 cm)). (12).

Round 2: Join the color of the petals into any dc st of the previous round. Ch 12, ss into the first ch of the ch 12. { Ss into the next dc st of the previous round. Ch 12, ss into the first ch of the ch 12 }. Repeat {} 10 more times. Then, ss into the dc st of the previous round that the first petal was worked into and fasten off. (12 ch-sps + 12 sts).

Except the long tail, weave in the ends.

Flower combinations for the small basket

“Flower B: color 28 with 53” means flower B whose centre is color 28 and petals are color 53.

1. Flower B: color 63 with 53
2. Flower A: color 114
3. Flower C: color 71 with 48
4. Flower A: color 48
5. Flower C: color 83 with 28
6. Flower B: color 114 with 83
7. Flower C: color 28 with 71
8. Flower B: color 53 with 63
9. Flower A: color 53
10. Flower B: color 63 with 48
11. Flower A: color 28
12. Flower C: color 48 with 114
13. Flower A: color 83
14. Flower C: color 28 with 53
15. Flower B: color 71 with 83
16. Flower C: color 53 with 114
17. Flower B: color 48 with 71
18. Flower A: color 53
19. Flower B: color 63 with 28
20. Flower A: color 114
21. Flower C: color 83 with 48
22. Flower A: color 48
23. Flower C: color 71 with 63
24. Flower B: color 28 with 114
25. Flower C: color 114 with 71
26. Flower B: color 48 with 53
27. Flower A: color 28
28. Flower B: color 53 with 28
29. Flower A: color 83
30. Flower C: color 114 with 63
31. Flower C: color 48 with 114
32. Flower B: color 83 with 71
33. Flower A: color 53
34. Flower A: color 63

Placement of the flowers, small basket

The flowers are attached in the following order (start with number 1 and continue to number 34). While they are arranged in columns, they are slightly offset to look like a field of wildflowers. Leave a small amount of space between the flowers, so the petals do not overlap. You may want to attach them with safety pins to determine the placement; then, use crochet applique (explained in the info and tips section above) to sew them onto the basket.

3	6	9	12	15	18	21	24	27	30	33	
2	5	8	11	14	17	20	23	26	29	32	
1	4	7	10	13	16	19	22	25	28	31	34

Flower combinations for the medium basket

“Flower B: color 28 with 53” means flower B whose center is color 28 and petals are color 53.

1. Flower B: color 114 with 53
2. Flower A: color 83
3. Flower C: color 71 with 28
4. Flower A: color 71
5. Flower C: color 28 with 48
6. Flower B: color 63 with 114
7. Flower C: color 53 with 83
8. Flower B: color 48 with 71
9. Flower A: color 28
10. Flower B: color 28 with 63
11. Flower A: color 83
12. Flower C: color 48 with 53
13. Flower A: color 53
14. Flower C: color 114 with 28
15. Flower B: color 71 with 114
16. Flower C: color 63 with 71
17. Flower B: color 83 with 48
18. Flower A: color 63
19. Flower B: color 114 with 28
20. Flower A: color 71
21. Flower C: color 28 with 53
22. Flower A: color 83
23. Flower C: color 48 with 63
24. Flower B: color 114 with 48
25. Flower C: color 28 with 114
26. Flower B: color 71 with 53
27. Flower A: color 28
28. Flower B: color 63 with 83
29. Flower A: color 48
30. Flower C: color 114 with 71
31. Flower C: color 71 with 53
32. Flower B: color 53 with 28
33. Flower A: color 63
34. Flower B: color 63 with 114
35. Flower A: color 71
36. Flower C: color 48 with 83
37. Flower A: color 28
38. Flower C: color 53 with 63
39. Flower B: color 114 with 48

Placement of the flowers, medium basket

The flowers are attached in the following order (start with number 1 and continue to number 39). While they are arranged in columns, they are slightly offset to look like a field of wildflowers. Leave a small amount of space between the flowers, so the petals do not overlap. You may want to attach them with safety pins to determine the placement; then, use crochet applique (explained in the info and tips section above) to sew them onto the basket.

3	6	9	12	15	18	21	24	27	30	33	36	39
2	5	8	11	14	17	20	23	26	29	32	35	38
1	4	7	10	13	16	19	22	25	28	31	34	37

Enjoy!

Maggie Trunkhill
Daisy Girl Crochet