



CROCHET PATTERN

Pastello Rosa

Shawl

Design: Crafty Maz Designs | Hobbii Design

MATERIALS

1 skein of Sultan Pastello 06

Crochet hook 3.5mm

Scissors

Stitch Markers

Tape Measure

YARN QUALITY

 **Sultan Pastello**, Hobbii

100 % Cotton

200 g / 7.1 oz = 800 m / 875 yds

GAUGE

10 cm x 10 cm (4" x 4") = 12 ch-sps by 9 rows

Ch 28

Row 1: Starting in the 6th ch from the hook place a dc, *ch 1, sk 1, dc 1* repeat until the end, turn {12 ch-sps, 13 dc}

Row 2-9: ch 3 (counts as dc and ch 1), *sk ch-sp, dc 1 in next st, ch 1* repeat until the end, sk ch-sp, dc 1 in the last st, turn

ABBREVIATIONS

ch = chain

ch-sp(s) = chain space(s)

st(s) = stitch(es)

sk = skip

sc = single crochet

dc = double crochet

SIZE

One size

MEASUREMENTS

Width: 133 cm / 52"

Length: 89 cm / 35"

PATTERN INFORMATION

This crochet shawl is perfect for any special occasion. The pattern uses the filet technique giving it a beautiful drape. It is great to throw on when it's getting a little chilly or just to add some coverage.

HASHTAGS FOR SOCIAL MEDIA

#hobbiidesign #hobbiispringcelebrations

#hobbiipastellorosa

BUY THE YARN HERE

<https://shop.hobbii.com/pastello-rosa-shawl>



QUESTIONS

If you have any questions regarding this pattern, please feel free to email us at

support@hobbii.com

Please make sure to include the pattern's name and number.

Happy Crafting!

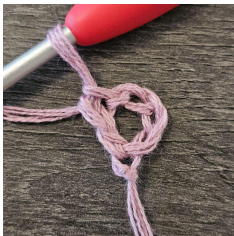
Pattern



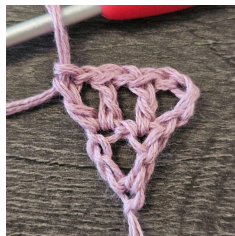
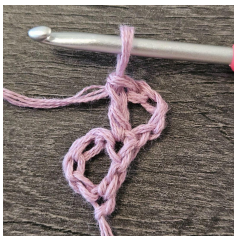
INFO AND TIPS

- The shawl is worked from the bottom point to the top
- Ch 4 counts as dc and ch-sp, this can be replaced by a standing dc + ch 1 if preferred
- When stated to work into a st, this is into the dc directly below from the previous row and not the ch-sp

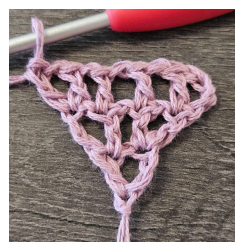
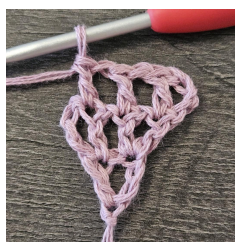
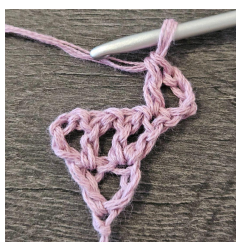
Row 1: ch 5 (counts as first dc and ch 1), 1 dc in the 5th ch from the hook, turn



Row 2: ch 4 (counts as first dc and ch 1 here and throughout), 1 dc in the first st, ch 1, sk ch-sp, (dc 1, ch 1, dc 1) in the last st (3rd ch), turn

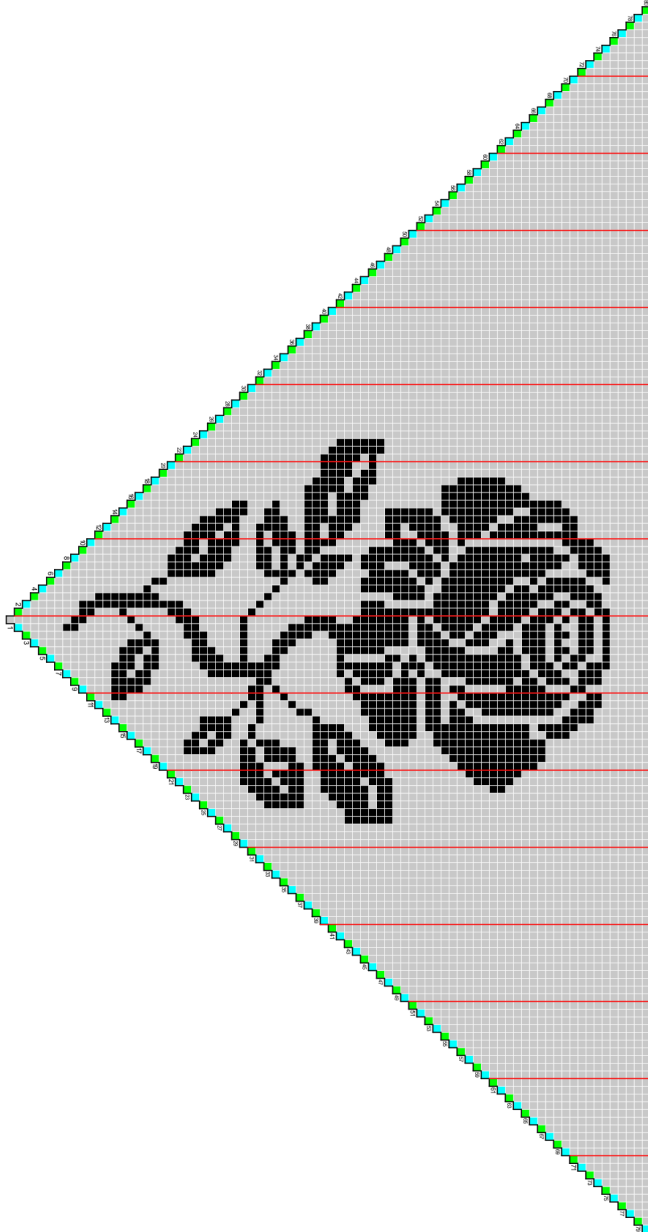


Row 3: ch 4, 1 dc in the first st, *ch 1, sk ch-sp, dc 1 in the next st* repeat until 1 ch-sp remains, ch 1, sk ch-sp, (dc 1, ch 1, dc 1) in the last st, turn



Repeat row 3 until row 80 while following the chart (see next page)

Chart



→The shawl is worked from the bottom point to the top

How to read the chart

- Read the chart from right to left for all odd numbered rows and left to right for all even numbered rows.
- Start at the bottom of the chart and work up in rows
- Each square represents 2 sts
- The vertical red lines in the chart are to help with counting only



= 1 dc in next st, ch 1, sk next st



= 1 dc in next 2 sts

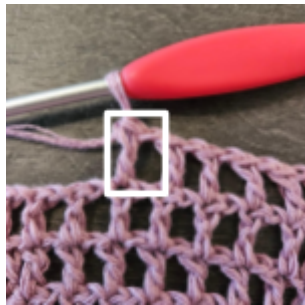


= ch 4 (counts as first dc and ch 1), 1 dc in the first st

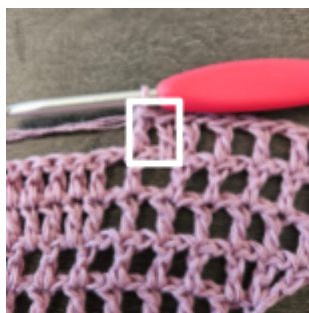


= (dc 1, ch 1, dc 1) in the last st, turn

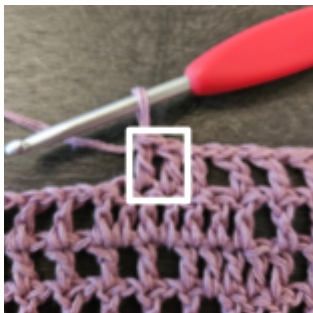
To work grey over grey: ch 1, sk next ch-sp, 1 dc in next dc



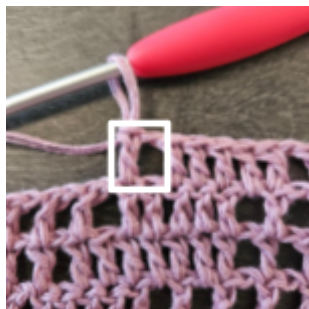
To work black over grey: 1 dc in next ch-sp, 1 dc in next dc



To work black over black: 1 dc in next 2 dc

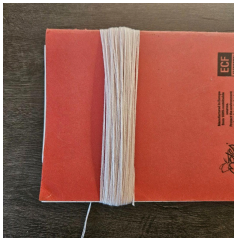


To work grey over black: ch 1, skip next dc, 1 dc in next dc



Tassels - make 2

Step 1: Using a thin book or piece of cardboard measuring approximately 6-7 inches, wrap the yarn around 100 times, cut the end. Carefully remove the loop from the book/cardboard, using a cut piece of yarn from the skein, tie a secure knot at the top to keep it secure. Cut the yarn at the opposite end of the knot.



Step 2: Take another piece of yarn from the skein. Wrap it around the tassel about one inch down and tie a knot. Wrap the yarn around the knot and use a crochet hook to pull the ends through the wrap to secure the ends. Trim the ends.



Step 3: Tie each tassel to the top corners of the shawl using a secure knot. Thread your needle and pull the tie ends through the tassel and trim if necessary.



Enjoy!



Mary Etheridge – Crafty Maz Design