



KNITTING PATTERN

Azulejo

Sweater

Design: The Strikkechick | Hobbii Design



MATERIALS

Alpaca Silk

5 (6) 6 (6) 7 (7) 8 (8) 9 skeins of color Andes Snow (01) **MC**

4 (4) 4 (4) 5 (5) 6 (6) 6 skeins of color Vienna (12) **CC**

Circular needle 4.0 mm, 80 cm /US 6, 31.5"

Circular needle 4.0 mm, 40 cm/US 6, 15.75"

Circular needle 3.5 mm, 80 cm/US 4, 31.5"

Circular needle 3.5mm, 40cm/US 4, 15.75"

Stitch markers

YARN QUALITY

 **Alpaca Silk**, Hobbii

70 % Alpaca, 30 % Mulberry Silk

50 g / 1.75 oz = 166 m / 181 yds

GAUGE

25 sts x 25 rows = 10 cm x 10 cm / 4" x 4" in fair isle pattern on 4.0mm needles

SIZE

1 (2) 3 (4) 5 (6) 7 (8) 9

MEASUREMENTS

Width: 48 (52.8) 57.6 (62.4) 67.2 (72) 76.8 (81.6) 86.4 cm / 18.9" (20.8") 22.7" (24.6") 26.5" (28.3") 30.2" (34")

Length: 50 (50) 50 (52) 52 (54) 54 (56) 58 (60) cm / 19.7" (19.7") 19.7" (20.5") 20.5" (21.3") 22" (22.8") 23.6"

PATTERN INFORMATION

The Azulejo Sweater is inspired by traditional tile work found in Portugal and parts of Spain. It is a top-down sweater with a drop-shoulder construction and all-over fair isle motif. Short rows are used to shape the shoulders and corrugated ribbing and Italian bind-off are used to finish the body and sleeves. Fair isle diagrams are charted.

The sweater has approx. 10-15 cm / 4"-6" positive ease.

HASHTAGS FOR SOCIAL MEDIA

#hobbiidesign #hobbiazulejo

BUY THE YARN HERE

<https://shop.hobbii.com/azulejo-sweater>

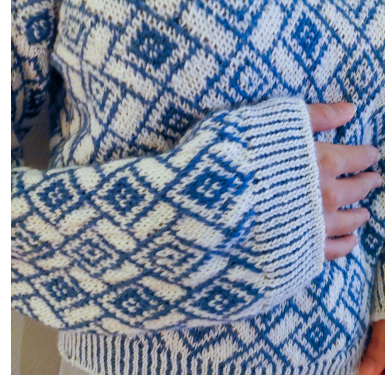
QUESTIONS

If you have any questions regarding this pattern, please feel free to email us at support@hobbii.com. Please make sure to include the pattern's name and number.

Happy Crafting!



Pattern



ABBREVIATIONS

K = knit

P = Purl

MC = main color

CC = contrast color

St(s) = stitch(es)

M = marker

GSR = german short row

RS = right side

WS = wrong side

Tw = turn work

DS = double stitch

M1L = make 1 stitch left

M1RP = make 1 stitch right purlwise

Sl1wyf = slip 1 stitch with yarn in front

Sl1wyb = slip 1 stitch with yarn in back

BOR = beginning of round

INFO AND TIPS

Charts are read from right to left on the right side of the work and left to right on the wrong side of the work.

BACK PIECE

With 4.0mm needles and MC, cast on 116 (128) 140 (152) 164 (177) 189 (201) 212 sts.

Purl across one row placing stitch markers as follows:

22 (24) 28 (32) 36 (39) 39 (43) 46 sts – M1 – 72 (80) 84 (88) 92 (99) 111 (115) 120 sts – M2 – 22 (24) 28 (32) 36 (39) 39 (43) 46 sts.

You will now knit German short rows to shape the shoulders:

German short rows

GSR1 (RS): knit to 1 stitch past M1. Tw

GSR2 (WS): purl to 1 stitch past M2. Tw

GSR3 (RS): knit to 6 sts past M1. Tw

GSR4 (WS): purl to 6 sts past M2. Tw

GSR5 (RS): knit to 6 sts past your DS. Tw

GSR6 (WS): purl to 6 sts past your DS. Tw

Repeat GSR5 and GSR6 1 (2) 2 (3) 4 (4) 4 (6) 6 more times. On the last short row, purl all stitches until you reach the end of the row.

Charts

You will now knit **Chart A** back and forth 1 time.
Start on stitch number 15 (21) 3 (9) 15 (20) 2 (8) 15

Now knit **Chart B** back and forth. Knit until back (from shoulder) measures 17.5 (17.5) 18.5 (18.5) 20 (20) 21.4 (21.4) 22.5 cm/6.9" (6.9") 7.3" (7.3") 7.9" (7.9") 8.4" (8.4") 8.9". End after a WS row and note which row you ended on.

Cut yarn and place sts on hold.

LEFT FRONT

Count 38 (41) 43 (46) 48 (50) 52 (54) 57 sts in from the outer left edge of your back piece while looking at the RS. Place a stitch marker there. Now pick up and knit 38 (41) 43 (46) 48 (50) 52 (54) 57 sts towards the outer left edge with a long tail of yarn instead of your working yarn.

Place a marker (M1) 22 (24) 28 (32) 36 (39) 39 (43) 46 sts out from the shoulder edge. Then knit short rows as follows:

German short rows

GSR1 (RS): k1. M1L. knit to 1 stitch past M1. Tw
GSR2 (WS): purl to end of row. Tw
GSR3 (RS): k1. M1L. knit to 6 sts past M1. Tw
GSR4 (WS): purl to end of row. Tw
GSR5 (RS): k1. M1L. knit to 6 sts past your DS. Tw
GSR6 (WS): purl to end of row. Tw

Repeat GSR5 and GSR6 1 (2) 2 (3) 4 (4) 4 (6) 6 more times.

Charts

Now knit **Chart A** back and forth in the following 2 rows. Start on stitch number 17 (19) 23 (1) 4 (8) 12 (15) 18

Row 1 (RS): k1. M1L. knit to the end
Row 1 (RS): k1. M1L. knit to the end
Row 2 (WS): purl all sts.

Knit these 2 rows a total of 6 times.

Now knit **Chart B** back and forth in the following 2 rows:

Row 1 (RS): k1. M1L. knit to the end
Row 2 (WS): purl all sts.

Knit these 2 rows a total of 4 (4) 6 (6) 10 (10) 12 (12) 12 times.

You will have increased 14 (15) 17 (18) 23 (23) 25 (26) 26 sts total and have 52 (56) 60 (64) 71 (73) 77 (80) 83 sts on your needles. Break the yarn and place sts on hold.

RIGHT FRONT

Starting at the outer edge of the right shoulder, pick up and knit 38 (41) 43 (46) 48 (50) 52 (54) 57 sts towards the center of the back panel. Place a marker (M1) 22 (24) 28 (32) 36 (39) 39 (43) sts out from the shoulder edge. Then knit short rows as follows:

German short rows:

GSR1 (WS): p1. M1RP. Purl to 1 st past M1. Tw

GSR2 (RS): knit to end of row. Tw

GSR3 (WS): p1. M1RP. purl to 6 sts past M1. Tw

GSR4 (RS): knit to end of row. Tw

GSR5 (WS): p1. M1RP. purl to 6 sts past your DS. Tw

GSR6 (RS): knit to end of row. Tw

Repeat GSR5 and GSR6 1 (2) 2 (3) 4 (4) 4 (6) 6 more times.

Purl one additional row without increases.

Charts:

Now knit **Chart A** back and forth in the following 2 rows. Start on stitch number 15 (9) 3 (21) 15 (8) 2 (20) 15

Row 1 (RS): knit all sts

Row 2 (WS): p1. M1RP. Purl until the end.

Knit these 2 rows a total of 6 times.

Now knit **Chart B** back and forth in the following 2 rows:

Row 1 (RS): knit all sts

Row 2 (WS): p1. M1RP. Purl until the end.

Knit these 2 rows a total of 4 (4) 6 (6) 10 (10) 12 (12) 12 times.

You will have increased 14 (15) 17 (18) 23 (23) 25 (26) 26 sts total and have 52 (56) 60 (64) 71 (73) 77 (80) 83 sts on your needles

FRONT

Knit the first 52 (56) 60 (64) 71 (73) 77 (80) sts on your needles (for the right front) in pattern. Cast on 12 (16) 20 (24) 22 (31) 35 (41) 46 new stitches. Knit the 52 (56) 60 (64) 71 (73) 77 (80) sts on hold for the left front. You now have 116 (128) 140 (152) 164 (177) 189 (201) 212 sts on your needles.

Continue to knit back and forth in **Chart B** until the same row as the back

BODY

Knit all front stitches. Cast on 4 (4) 4 (4) 4 (3) 3 (3) 4 new stitches for underarm. Knit all back stitches. Cast on 4 (4) 4 (4) 4 (3) 3 (3) 4 new stitches for underarm. Put a BOR marker between these 4 stitches.



For sizes 6, 7, and 8: place your BOR marker after 2 underarm stitches.

Knit until sweater measures 25.5 (25.5) 24.5 (26.5) 25 (27) 27.6 (29.5) 30.5 cm / 10" (10") 9.6" (10.4") 9.8" (10.6") 10.9" (11.7") 12" from BOR marker

Ribbing

Set up round: switch to 3.5mm needles while knitting all stitches alternating colors (k1 MC, k1 CC)* repeat until the end of round.

Knit corrugated ribbing for 7 cm / 2.8". Break CC and do 2 set-up rounds for Italian bind-off with MC as follows:

Round 1: (k1, sl1wyf)* repeat until end of round

Round 2: (sl1wyb, p1)* repeat until end of round

Cut yarn and bind off all stitches using the Italian bind-off technique.

COLLAR

Starting at the right-hand side of the back of the neck with MC yarn and 3.5mm needles, pick up and knit 1 stitch for every stitch along the back of the neck. Once you reach the diagonals where you increased stitches for the front section, pick up and knit 3 out of every 4 stitches. Pick up and knit 1 out of every stitch cast on for the middle front of the sweater. Pick up and knit 3 out of every 4 stitches along the next diagonal where you increased stitches for the front section. Make sure you pick up an even number.

Set up round: knit all stitches alternating colors (k1 MC, k1 CC)* repeat until the end of round.

Knit corrugated ribbing for 5 cm / 2". Break CC and do 2 set-up rounds for Italian bind-off with MC as follows: (NOTE: if you want a looser bind-off, switch to 4.0 or 4.5mm needles for the next 2 rounds).

Round 1: (k1, sl1wyf)* repeat until end of round

Round 2: (sl1wyb, p1)* repeat until end of round

Cut yarn and bind off all stitches using the Italian bind-off technique.

SLEEVES

Using MC and 4.0mm needles, pick up and knit 96 (96) 96 (96) 96 (96) 120 (120) 120 stitches starting from the bottom of the armhole. Place a BOR marker and join in the round.

Knit one round in MC. Then knit **Chart A** one time.

Knit **Chart B** until the sleeve measures 38 (38) 38 (38) 37 (37) 36 (36) 36 cm / 15" (15") 15" (15") 14.6" (14.6") 14.2" (14.2") 14.2" or desired length. Note that ribbing will add 7 cm / 2.8" Try to end after row 7 or 1.

Ribbing

Set up round: switch to 3.5mm needles while knitting all stitches alternating colors (k1 MC, k1 CC)* repeat until the end of the round.

Knit corrugated ribbing for 7 cm/ 2.8". Break CC and do 2 set-up rounds for Italian bind-off with MC as follows:

Round 1: (k1, sl1wyf)* repeat until end of round

Round 2: (sl1wyb, p1)* repeat until end of round

Cut yarn and bind off all stitches using the Italian bind-off technique.

Knit the other sleeve in the same manner.

FINISHING

Weave in any loose ends. Block sweater according to yarn instructions.

Enjoy!

Samantha Xavier (@thestrikkechick)

CHARTS

Chart A

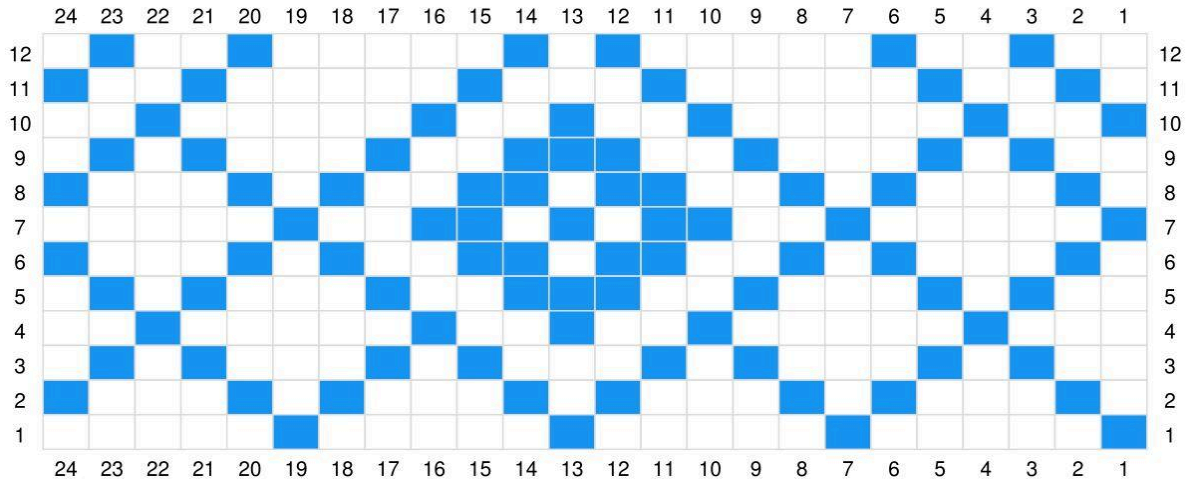
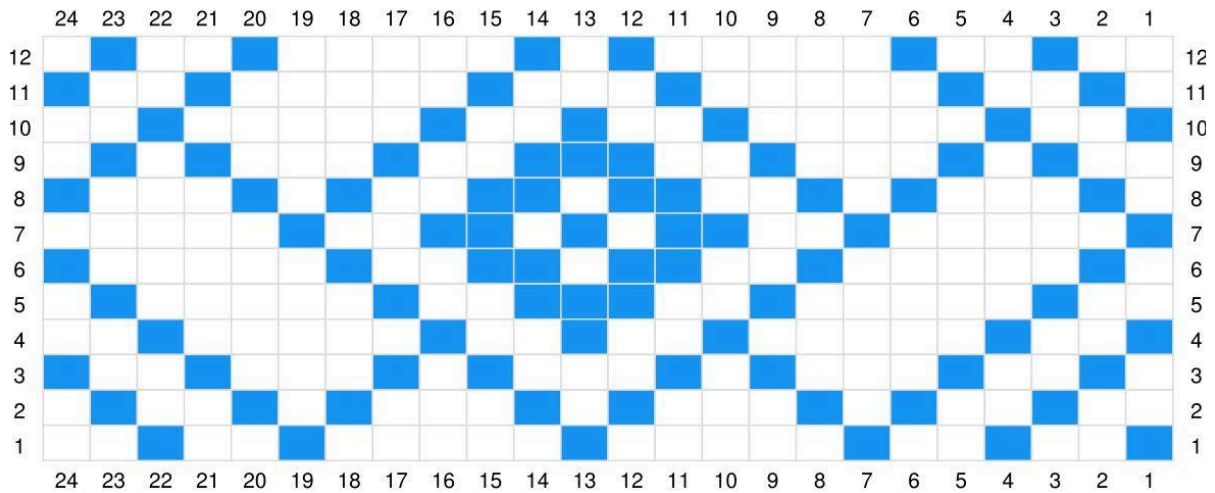




Chart B



Legend

	MC: Knit on right side, purl on wrong side
	CC: Knit on right side, purl on wrong side