



**CROCHET PATTERN**

# **New Years Eve**

**Photo Props**

**Design: Elisa's Crochet | Hobbii Design**

## MATERIALS

### Flash it!


2 skeins of color 13  
1 skein of color 04  
1 skein of color 07  
2 skeins of color 01  
1 skein of color 12  
1 skein of color 03


### Friends Cotton 8/4

1 skein of color 124  
1 skein of color 01

Crochet hook 2.5 mm / US C2  
Crochet hook 3.5 mm / US E  
Aluminium Wires  
Wooden Sticks  
Filling – 100 g (3.5 oz)

## YARN QUALITY

 **Flash it!**, Hobbii  
80% Viscose, 20% Metallic Fiber  
50 g / 1.75 oz = 90 m / 98 yds

 **Friends Cotton 8/4**, Hobbii  
100% Cotton  
50 g / 1.75 oz = 160 m / 174 yds

## ABBREVIATIONS

ch = chain  
sc = single crochet  
hdc = half double crochet  
dc = double crochet  
sl st = slip stitch  
sk = skip  
yo = yarn over  
inc = increase (2 sts in the same st)  
dec = decrease (2 sts together)  
st = stitch

## QUESTIONS

If you have any questions regarding this pattern, please feel free to email us at [support@hobbii.com](mailto:support@hobbii.com)

Please make sure to include the pattern's name and number.

Happy Crafting!

## SIZE

One size

## MEASUREMENTS

Moustache – 15 x 3 cm (6 x 1.5")  
Lips – 11.5 x 5 cm (4.5 x 2")  
Champagne Bottle – 15 x 6 cm (6 x 2.5")  
Bow-Tie – 15 x 7.5 cm (6 x 3")  
Firework – 18 x 7.5 cm (7 x 3")  
Clock – 15 x 15 cm (6 x 6")  
Top Hat – 13 x 13 cm (5 x 5")  
Glasses – 15 x 7.5 cm (6 x 3")

## PATTERN INFORMATION

Ring in the New Year with a crafty twist!  
These are the cutest crochet patterns for festive New Year's Eve props. Perfect for adding a handmade touch to your celebration.

It is a mix of beginner friendly patterns and patterns suited for intermediate crocheters.

## HASHTAGS FOR SOCIAL MEDIA

#hobbiidesign #hobbiinewyeareseve  
#ElisasCrochetxHobbii #HobbiiPhotoProps  
#HobbiiHappyNewYear

## BUY THE YARN HERE

<https://shop.hobbii.com/new-years-eve-photo-props>

# Patterns



## INFO AND TIPS

The Moustache, Lips, Champagne Bottle, Bow-Tie, Fireworks and Clock patterns are worked in joined rounds.

The Top Hat pattern is worked in back-and-forth rows.

**Joined Rounds:** Close each round with a slip stitch into the 1<sup>st</sup> st. Chain 1 and work in the same stitch.

### Seamless color change

Work in the color A until two loops of the last stitch remain on the hook.  
Use the color B to complete the stitch.

## Tapestry Crochet

A color-changing technique that allows you to work a single row of stitches in more than one color; it is worked very tightly with the non-working color carried inside the stitch.

### When working the Right Side:

When using one color more than once in the same row, crochet working over the unused color parallel to the foundation row, inserting your hook through both loops of your stitch and underneath the unused color and working your stitch as normal.

### When working the Wrong Side:

When using one color more than once in the same row, make sure to take the unused color of your work to the WS, which is the one facing you. Work the new color, hiding the unused one by carrying it inside the stitch when needed.

## MUSTACHE

Work with Flash it! color 13 and 3.5 mm crochet hook.

Rnd 1: 5 sc in a magic ring (5)

Rnd 2: 1 sc in each st around (5)

Rnd 3: 4 sc, 1 sc inc (6)

Rnd 4: (2 sc, 1 sc inc) twice (8)

Rnd 5: (3 sc, 1 sc inc) twice (10)

Rnd 6: (4 sc, 1 sc inc) twice (12)

Rnd 7: 5 sc, 1 sc inc, 1 sc inc, 5 sc (14)

Rnd 8: 6 sc, 1 sc inc, 1 sc inc, 6 sc (16)

Rnd 9: 7 sc, 1 sc inc, 1 sc inc, 7 sc (18)

Rnds 10 - 11: 1 sc in each st around (18) *(Pic. 1)*

Rnd 12: 7 sc, 1 sc dec, 1 sc dec, 7 sc (16)

Rnd 13: (2 sc, 1 sc dec) rep around (12)

Start stuffing and continue until piece is complete. *(Pic.2)*

Rnd 14: (4 sc, 1 sc dec) twice (10)

Rnd 15: (4 sc, 1 sc inc) twice (12)

Rnd 16: (2 sc, 1 sc inc) rep around (16)

Rnd 18: 7 sc, 1 sc inc, 1 sc inc, 7 sc (18)

Rnds 19 - 20: 1 sc in each st around (18)

Rnd 21: 7 sc, 1 sc dec, 1 sc dec, 7 sc (16)

Rnd 22: 6 sc, 1 sc dec, 1 sc dec, 6 sc (14)

Rnd 23: (5 sc, 1 sc dec) twice (12)

Rnd 24: (4 sc, 1 sc dec) twice (10)

Rnd 25: (3 sc, 1 sc dec) twice (8)

Rnd 26: (2 sc, 1 sc dec) twice (6)

Rnd 27: 4 sc, 1 sc dec (5)

Rnd 28: 1 sc in each st around (5)

Fasten off, leaving a long strand of yarn. Thread tail through top of sts of last rnd. Pull tail to close opening and knot securely. Weave in ends. *(Pic. 3)*

## LIPS

### Upper Lip

Work with Flash it! color 04 and 3.5 mm crochet hook.

Rnd 1: 5 sc in a magic ring (5)

Rnd 2: 4 sc, 1 sc inc (6)  
Rnd 3: 2 sc, 1 sc inc, 1 sc inc, 2 sc (8)  
Rnd 4: 2 sc, 1 sc inc, 2 sc, 1 sc inc, 2 sc (10)  
Rnd 5: 3 sc, 1 sc inc, 2 sc, 1 sc inc, 3 sc (12)  
Rnd 6: 4 sc, 1 sc inc, 2 sc, 1 sc inc, 4 sc (14)  
Rnd 7: 1 sc in each st around (14)  
Rnd 8: 1 sc inc, 4 sc, 1 sc dec, 1 sc dec, 4 sc, 1 sc inc (14)  
Rnd 9: 6 sc, 1 sc dec, 6 sc (13) *(Pic.4 - 5)*

Start stuffing and continue until piece is complete.

Rnd 10: 6 sc, 1 sc inc, 6 sc (14)  
Rnd 11: 1 sc dec, 4 sc, 1 sc inc, 1 sc inc, 4 sc, 1 sc dec (14)  
Rnd 12: 1 sc in each st around (14)  
Rnd 13: 4 sc, 1 sc dec, 2 sc, 1 sc dec, 4 sc (12)  
Rnd 14: 3 sc, 1 sc dec, 2 sc, 1 sc dec, 3 sc (10)  
Rnd 15: (3 sc, 1 sc dec) twice (8)  
Rnd 16: (2 sc, 1 sc dec) twice (6)  
Rnd 17: 4 sc, 1 sc dec (5)

Fasten off, leaving a long strand of yarn. Thread tail through top of sts of last rnd. Pull tail to close opening and knot securely. Weave in ends. *(Pic.7)*

### Lower Lip

Work with Flash it! color 04 and 3.5 mm crochet hook.

Rnd 1: 5 sc in a magic ring (5)  
Rnd 2: 4 sc, 1 sc inc (6)  
Rnd 3: 2 sc, 1 sc inc, 1 sc inc, 2 sc (8)  
Rnd 4: 2 sc, 1 sc inc, 2 sc, 1 sc inc, 2 sc (10)  
Rnd 5: 3 sc, 1 sc inc, 2 sc, 1 sc inc, 3 sc (12)  
Rnd 6: 4 sc, 1 sc inc, 2 sc, 1 sc inc, 4 sc (14)  
Rnd 7: 1 sc in each st around (14)  
Rnd 8: 1 sc dec, 10 sc, 1 sc dec (12)  
Rnd 9: 1 sc in each st around (12)

Start stuffing and continue until piece is complete.

Rnd 10: 1 sc inc, 10 sc, 1 sc inc (14)  
Rnd 11: 1 sc in each st around (14)  
Rnd 12: 4 sc, 1 sc dec, 2 sc, 1 sc dec, 4 sc (12)  
Rnd 13: 3 sc, 1 sc dec, 2 sc, 1 sc dec, 3 sc (10)  
Rnd 14: 3 sc, 1 sc dec, 1 sc dec, 3 sc (8)  
Rnd 15: 2 sc, 1 sc dec, 1 sc dec, 2 sc (6)  
Rnd 16: 2 sc, 1 sc dec, 2 sc (5) *(Pic.7)*

Fasten off, leaving a long strand of yarn. Thread tail through top of sts of last rnd. Pull tail to close opening and knot securely. *(Pic.7)*

Use the extra strand of yarn to sew the side tips of Upper and Lower Lips together. *(Pic. 8 - 9)*

## CHAMPAGNE BOTTLE

### Bottle

Work with Flash it! color 07 and 3.5 mm crochet hook.

Rnd 1: ch 11, 2 sc in the 2<sup>nd</sup> ch from the hook, sc in next 8 chs, 5 sc in the last ch; keep working on the other side of the foundation chain, 8 sc, 3 sc in the last ch (26) *(Pic. 10 - 13)*

Rnd 2: 1 sc, 1 sc inc, 8 sc, 1 sc inc, 1 sc, 1 sc inc, 1 sc, 1 sc inc, 8 sc, 1 sc inc, 1 sc, 1 sc inc (32) *(Pic. 14)*

Rnd 3: working in back loop only, 1 sc in each st around (32) *(Pic. 15)*

Rnd 4: working in both loops now, 1 sc in each st around (32)

Rnd 5: switch to color 01, 1 sc in each st around (32) *(Pics. 16 - 18)*

Rnds 6 - 12: 1 sc in each st around (32)

Rnd 13: switch back to color 07, 1 sc in each st around (32) *(Pics. 19 - 20)*

Rnds 14 - 15: 1 sc in each st around (32)

Rnd 16: 1 sc dec, 10 sc, 1 sc dec, 2 sc, 1 sc dec, 10 sc, 1 sc dec, 2 sc (28)

Rnd 17: 1 sc in each st around (28)

Rnd 18: 1 sc dec, 8 sc, 1 sc dec, 2 sc, 1 sc dec, 8 sc, 1 sc dec, 2 sc (24)

Rnd 19: 1 sc dec, 6 sc, 1 sc dec, 2 sc, 1 sc dec, 6 sc, 1 sc dec, 2 sc (20)

Rnd 20: 1 sc in each st around (20)

Start stuffing and continue until piece is complete.

Rnd 21: 1 sc dec, 4 sc, 1 sc dec, 2 sc, 1 sc dec, 4 sc, 1 sc dec, 2 sc (16)

Rnd 22: 1 sc in each st around (16)

Rnd 23: 6 sc, 1 sc dec, 6 sc, 1 sc dec (14)

Fasten off color 07 yarn.

Rnd 24: switch back to color 01, 1 sc in each st around (14)

Rnds 25 - 31: 1 sc in each st around (14)

Rnd 32: working in front loop only, (1 sc, 1 sc inc) rep around (21) *(Pics. 21 - 22)*

Rnd 33: working in back loop only, 1 sc in each st around (21) *(Pic. 23)*

Rnds 34 - 36: 1 sc in each st around (21)

Rnd 37: (1 sc, 1 sc dec) rep around (14)

Rnd 38: working in back loop only, sc dec around (7) *(Pic. 24)*

Fasten off, leaving a long strand of yarn. Thread tail through top of sts of last rnd. Pull tail to close opening and knot securely. *(Pic. 7)*

### Neck Label

Work with Flash it! color 13 and 3.5 mm crochet hook.

Row 1: ch 35, 1 sc in 2<sup>nd</sup> ch from the hook, 1 sc in next 33 ch (34)

Fasten off, leaving a long strand of yarn.

Wrap the Label around the Bottle Neck and sew it in place with the extra strand of yarn and the embroidery needle. *(Pics. 25 - 26)*

### Sealing Wax

Work with Flash it! color 04 and 3.5 mm crochet hook.

Rnd 1: 8 sc in a magic ring (8) *(Pic. 27)*

Fasten off, leaving a long strand of yarn.

Place the Sealing Wax on the Label and sew it in place with the extra strand of yarn and the embroidery needle.

Embroider 2 straight lines with Flash it! color 13 on the label section.

## **BOW-TIE**

### **Small Bow**

Work with Flash it! color 12 and 3.5 mm crochet hook.

Rnd 1: ch 13, 2 sc in the 2<sup>nd</sup> ch from the hook, sc in next 10 chs, 5 sc in the last ch; keep working on the other side of the foundation chain, 10 sc, 3 sc in the last ch (30)

Rnds 2 - 4: 1 sc in each st around (30)

Rnd 5: 1 sc dec, 10 sc, 1 sc dec, 1 sc, 1 sc dec, 10 sc, 1 sc dec, 1 sc (26)

Rnd 6: 1 sc in each st around (26)

Rnd 7: 1 sc dec, 8 sc, 1 sc dec, 1 sc, 1 sc dec, 8 sc, 1 sc dec, 1 sc (22)

Rnd 8: 1 sc in each st around (22)

Rnd 9: 1 sc dec, 6 sc, 1 sc dec, 1 sc, 1 sc dec, 6 sc, 1 sc dec, 1 sc (18)

Rnd 10: 1 sc in each st around (18)

Rnd 11: 1 sc dec, 4 sc, 1 sc dec, 1 sc, 1 sc dec, 4 sc, 1 sc dec, 1 sc (14)

Rnds 12 - 14: 1 sc in each st around (14)

Rnd 15: 1 sc inc, 4 sc, 1 sc inc, 1 sc, 1 sc inc, 4 sc, 1 sc inc, 1 sc (18)

Rnd 16: 1 sc in each st around (18)

Rnd 17: 1 sc inc, 6 sc, 1 sc inc, 1 sc, 1 sc inc, 6 sc, 1 sc inc, 1 sc (22)

Rnd 18: 1 sc in each st around (22)

Rnd 19: 1 sc inc, 8 sc, 1 sc inc, 1 sc, 1 sc inc, 8 sc, 1 sc inc, 1 sc (26)

Rnd 20: 1 sc in each st around (26)

Rnd 21: 1 sc inc, 10 sc, 1 sc inc, 1 sc, 1 sc inc, 10 sc, 1 sc inc, 1 sc (30)

Rnd 22: 1 sc in each st around (30)

Rnds 23 - 24: 1 sc in each st around (30)

Rnd 25: 1 sc dec, 10 sc, 1 sc dec, 1 sc, 1 sc dec, 10 sc, 1 sc dec, 1 sc (26) (*Pic. 28*)

Fasten off, leaving a long strand of yarn. Close the opening by sewing the stitches on one side to the one on the opposite side. (*Pics. 29 - 30*)

Pinch the center of the bow with your fingers. Use a needle and color 12 yarn to go through all layers of the ribbon in the center of the bow. Pull on the yarn to bunch up the ribbon. Fasten off, cut the yarn and weave in end. (*Pic. 31*)

### **Large Bow**

Work with Flash it! color 12 and 3.5 mm crochet hook.

Rnd 1: ch 15, 2 sc in the 2<sup>nd</sup> ch from the hook, sc in next 12 chs, 5 sc in the last ch; keep working on the other side of the foundation chain, 12 sc, 3 sc in the last ch (34)

Rnds 2 - 4: 1 sc in each st around (34)

Rnd 5: 1 sc dec, 12 sc, 1 sc dec, 1 sc, 1 sc dec, 12 sc, 1 sc dec, 1 sc (30)

Rnd 6: 1 sc in each st around (30)

Rnd 7: 1 sc dec, 10 sc, 1 sc dec, 1 sc, 1 sc dec, 10 sc, 1 sc dec, 1 sc (26)

Rnd 8: 1 sc in each st around (26)

Rnd 9: 1 sc dec, 8 sc, 1 sc dec, 1 sc, 1 sc dec, 8 sc, 1 sc dec, 1 sc (22)

Rnd 10: 1 sc in each st around (22)

Rnd 11: 1 sc dec, 6 sc, 1 sc dec, 1 sc, 1 sc dec, 6 sc, 1 sc dec, 1 sc (18)

Rnds 12 - 18: 1 sc in each st around (18)

Rnd 19: 1 sc inc, 6 sc, 1 sc inc, 1 sc, 1 sc inc, 6 sc, 1 sc inc, 1 sc (22)  
Rnd 20: 1 sc in each st around (22)  
Rnd 21: 1 sc inc, 8 sc, 1 sc inc, 1 sc, 1 sc inc, 8 sc, 1 sc inc, 1 sc (26)  
Rnd 22: 1 sc in each st around (26)  
Rnd 23: 1 sc inc, 10 sc, 1 sc inc, 1 sc, 1 sc inc, 10 sc, 1 sc inc, 1 sc (30)  
Rnd 24: 1 sc in each st around (30)  
Rnd 25: 1 sc inc, 12 sc, 1 sc inc, 1 sc, 1 sc inc, 12 sc, 1 sc inc, 1 sc (34)  
Rnds 26 - 27: 1 sc in each st around (34)  
Rnd 28: 1 sc dec, 12 sc, 1 sc dec, 1 sc, 1 sc dec, 12 sc, 1 sc dec, 1 sc (30)

Fasten off, leaving a long strand of yarn.

Close the opening by sewing the stitches on one side to the one on the opposite side.

Wrap the center of the bow around the center on the small bow. Pinch the center of the bow with your fingers. Use a needle and color 12 yarn to go through all layers of the ribbon in the center of the bow. Pull on the yarn to bunch up the ribbon. Fasten off, cut the yarn and weave in end. (*Pics. 32 - 33*)

### Center Part

Work with Flash it! color 01 and 3.5 mm crochet hook.

Row 1: ch 17, 1 sc in the 2<sup>nd</sup> ch from the hook, sc in next 15 chs, turn (16)

Rows 2 - 4: ch1, 1 sc in each st, turn (16) (*Pic. 34*)

Fasten off, leaving a long strand of yarn.

Wrap the piece around the middle part of the bow. Sew the short side together. (*Pics. 35 - 36*)

## FIREWORK

### Main Part

Work with Flash it! color 04 and 3.5 mm crochet hook.

Rnd 1: ch 11, 2 sc in the 2<sup>nd</sup> ch from the hook, sc in next 8 chs, 5 sc in the last ch; keep working on the other side of the foundation chain, 8 sc, 3 sc in the last ch (26) (*Pic. 37*)

Rnd 2: 1 sc inc, 10 sc, 1 sc inc, 1 sc, 1 sc inc, 10 sc, 1 sc inc, 1 sc (30) (*Pic. 38*)

Rnd 3: working in back loop only, 1 sc in each st around (30) (*Pic. 39*)

Rnd 4: switch to color 01, working in both loops now, 1 sc in each st around (30) (*Pics. 40 - 42*)

Rnds 5 - 6: switch back to color 04, 1 sc in each st around (30) (*Pic. 43*)

Rnd 7: switch back to color 01, 1 sc in each st around (30)

Rnds 8 - 9: switch back to color 04, 1 sc in each st around (30)

Rnd 10: switch back to color 01, 1 sc in each st around (30)

Rnds 11 - 12: switch back to color 04, 1 sc in each st around (30)

Rnd 13: switch back to color 01, 1 sc in each st around (30)

Rnds 14 - 15: switch back to color 04, 1 sc in each st around (30) (*Pic. 44*)

Rnd 16: switch back to color 01, working in front loop only, (1 sc, 1 sc inc) rep around (45) (*Pic. 45*)

Rnd 17: working in both loops now, 1 sc in each st around (45)

Rnd 18: working in back loop only, 1 sc in each st around (45) (*Pic. 46*)

Rnd 19: working in both loops now, 1 sc in each st around (45)

Start stuffing and continue until piece is complete.

Rnd 20: (7 sc, 1 sc dec) rep around (40)

Rnd 21: (6 sc, 1 sc dec) rep around (35)



Rnd 22: (5 sc, 1 sc dec) rep around (30)  
Rnd 23: 1 sc in each st around (30)  
Rnd 24: (4 sc, 1 sc dec) rep around (25)  
Rnd 25: 1 sc in each st around (25)  
Rnd 26: (3 sc, 1 sc dec) rep around (20)  
Rnd 27: 1 sc in each st around (20)  
Rnd 28: (2 sc, 1 sc dec) rep around (15)  
Rnd 29: 1 sc in each st around (15)  
Rnd 30: (1 sc, 1 sc dec) rep around (10)  
Rnd 31: (3 sc, 1 sc dec) twice (8)  
Rnd 32: (2 sc, 1 sc dec) twice (6) (Pic. 47)

Fasten off, leaving a long strand of yarn. Thread tail through top of sts of last rnd. Pull tail to close opening and knot securely. (Pic.48)

## Fuse

Work with Friends Cotton 8/4 color 124 and 2.5 mm crochet hook  
Row 1: ch 15, 1 sc in the 2<sup>nd</sup> ch from the hook, sc in next 13 chs (14) (Pic. 49)

Fasten off, leaving a long strand of yarn.  
Sew the Fuse to the bottom part of the Firework. (Pics. 50 - 51)

## CLOCK

### Front Panel

Work with Friends Cotton 8/4 color 01 and 2.5 mm crochet hook.  
Rnd 1: 8 sc in a magic ring (8)  
Rnd 2: sc inc around (16)  
Rnd 3: (1 sc, 1 sc inc) rep around (24)  
Rnd 4: (2 sc, 1 sc inc) rep around (32)  
Rnd 5: (3 sc, 1 sc inc) rep around (40)  
Rnd 6: (4 sc, 1 sc inc) rep around (48)  
Rnd 7: (5 sc, 1 sc inc) rep around (56)  
Rnd 8: (6 sc, 1 sc inc) rep around (64)  
Rnd 9: (7 sc, 1 sc inc) rep around (72)  
Rnd 10: (8 sc, 1 sc inc) rep around (80)

Fasten off and weave in end. (Pic. 52)

Embroider lines, hour and minute hands with Friends Cotton 8/4 color 124. (Pic. 53)

### Back Panel and Frame

Work with Flash it! color 01 and 3.5 mm crochet hook  
Rnd 1: 8 sc in a magic ring (8)  
Rnd 2: sc inc around (16)  
Rnd 3: (1 sc, 1 sc inc) rep around (24)  
Rnd 4: (2 sc, 1 sc inc) rep around (32)  
Rnd 5: (3 sc, 1 sc inc) rep around (40)  
Rnd 6: (4 sc, 1 sc inc) rep around (48)  
Rnd 7: (5 sc, 1 sc inc) rep around (56) (Pic. 54)

Do not fasten off. Place the back panel with 56 sts on top of the front panel with 80 sts and join them working through each st of the back panel and like this of the front panel: [(1 sc, skip 1 st, sc in the next one) rep 6 times, sc in next 2 sts] rep 4 times - 56 sc. (Pics. 56 - 57)  
*Note: you can add a piece of cardboard to help stabilise it before closing it.*

Rnd 8: sc around (56) (Pic. 58)

Rnd 9: working in front loop only, sc inc around (112) (Pic. 59)

Rnds 10 - 15: working in both loops now, sc around (112)

Rnd 16: sc dec around (56)

Do not fasten off.

Sew Rnd 16 to Rnd 10 of the Front Panel. (Sew in the same pattern as used to connect the front and back pattern for an even circle. Tip: For a more even seam, sew in back loop only). Stuff the Frame while sewing it close (Stuff it firmly and evenly, especially where you have the bends) (Pics. 60 - 62)

Insert the stick in the back side of the frame. (Pic. 63)

## TOP HAT

### Make two

(Drawing A)

Work with Flash it! color 013 and 3.5 mm crochet hook.

Row 1: ch 21, 1 sc in the 2<sup>nd</sup> ch from the hook, sc in next 19 chs (20); turn

Row 2: ch 1, (1 hdc, 1 sc) in the 1<sup>st</sup> st, 18 sc, (1 sc, 1 hdc) in the last st (22); turn

Row 3: ch 2, (1 dc, 1 hdc, 1 sc) in the 1<sup>st</sup> st, 20 sc, (1 sc, 1 hdc, 1 dc) in the last st (26); turn

Row 4: ch 1, 6 sc; switch to color 01, working in back loop only, 14 sc; switch back to color 013, working in both loops now, 6 sc (26); turn (Pics. 64 - 67)

Row 5: ch 1, 4 sc; switch to color 01, work 2 sc in front loop only, work 14 sc in both loops; work 2 sc in front loop only; switch back to color 013, working in both loops now, 4 sc (26); turn (Pics. 68 - 73)

Row 6: ch 1, 1 sc dec, 1 sc; switch to color 01, work 1 sc in back loop only, work 2 sc in both loops; switch back to color 13, work 14 sc in back loop only; switch to color 01, work 2 sc, work 1 sc in back loop only; switch back to color 13, 1 sc, 1 sc dec (24); turn (Pic. 74)

Fasten off color 013 yarn. (Pic. 75)

Row 7: with color 01, ch 1, 1 sc; switch to color 13, work 18 sc; switch to color 01, work 1 sc (20); turn (Pic. 76)

Fasten off color 01 yarn.

Row 8: with color 13 only, ch 1, 20 sc (20); turn

Rows 9 - 18: ch 1, 20 sc (20); turn

Row 19: ch 1, 9 sc, 1 sc inc, 10 sc (21); turn

Rows 20 - 21: ch 1, 21 sc (21)

Fasten off, cut the yarn and weave in end the 1<sup>st</sup> panel.

Do not fasten off the 2<sup>nd</sup> panel. (Pic. 77)

Join the two panel by working 1 sc in each st around (Pic. 78):

- work 3 sc in each one of the two corner stitches at the top of the hat
- switch to color 01 when getting to the different color section, then switch back to color 13 (Pics. 79 - 80)

Stuff lightly while joining the panels. (Pic. 81)

Fasten off, cut the yarn and weave in ends.

## GLASSES

Create the frame of the glasses with aluminium wire. Make the diameter of the lens 6 cm (2.25") wide (Drawing B). Secure the ends with tape. (Pic. 82)

*Tip: You can shape the glasses around the top of a soda can.*

*Leave about 1.5-2cm (0.5"-0.75") overlap to tape the glasses together.*

*Make sure the nose ridge is about the width of your thumb.*

### Glasses

Work with Flash it! color 03 and 3.5 mm crochet hook

- work a slip knot (Pic. 83)
- put your hook through (Pic. 84)
- grab the yarn from underneath the wire (Pics. 85 - 86)
- grab yarn again (from above the wire) and pull it through two loops (Pics. 87 - 88)
- continue until all frame is covered with yarn. Close the ring around the first lens with a slst before continuing onto the nose ridge. (Pics. 89 - 92)
- once you reach the end, sl st in the 1<sup>st</sup> st of the same lens (Pic. 93)
- insert hook into 1<sup>st</sup> st, then sl st in each st around (Pics. 94 - 96)

Fasten off, cut the yarn and weave in end.

With color 03 and embroidery needle, secure the stick to one side of the glasses. (Pics. 97 -99)

### Star (make two)

Work with Flash it! color 01 and 3.5 mm crochet hook

Rnd 1: in a magic ring, (1 sc, 1 dc, 2 chs, 1 dc) 5 times, 1 sc 1 sl st into the 1<sup>st</sup> sc (26)

Close the ring. (Pics. 100 - 102)

Fasten off leaving a long strand of yarn. Sew the star to the glasses frame. (Pics. 103 - 105)

### Enjoy!

Elisa Sartori



## GUIDE

1



2



3



4



5



6



7



8



9



10



11



12



13



14



15



16



17



18



19



20



21



22



23



24



25



26



27



28



29



30



31



32



33



34



35



36



37



38



39



40



41



42



43



44



45



46



47



48



49



50



51



52



53



54



55



56



57





58



59



60



61



62



63



64



65



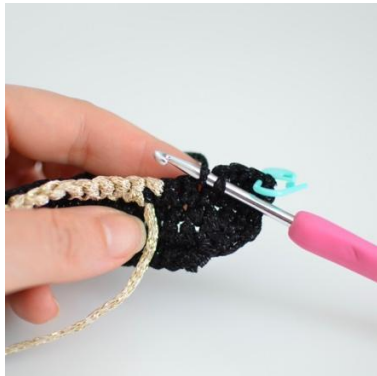
66



67



68



69



70



71



72



73



74



75



76



77



78



79



80



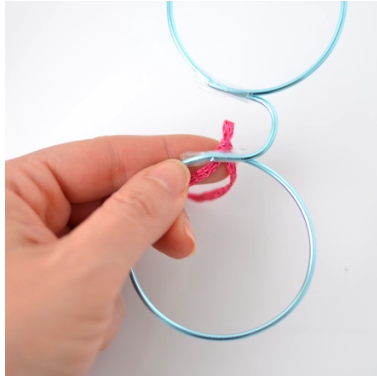
81



82



83



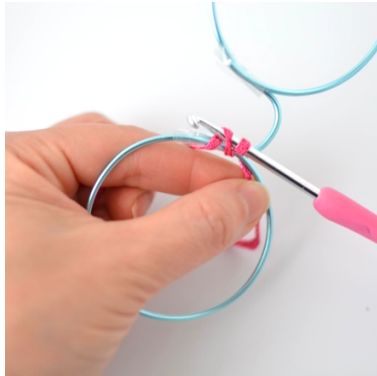
84



85



86



87



88



89



90



91



92



93



94



95



96



97



98



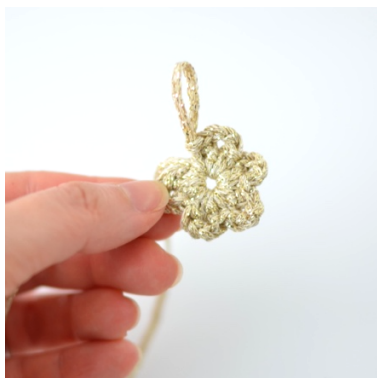
99



100



101



102



103



104



105



