



KNITTING PATTERN

Kvitka

Textured Flower Mittens

Design: Tetyana Vyazovska | Autumn 2024

MATERIALS

Hobbii Unicorn Solid

Shade: Mustard (20); 1 skein

2mm / US 0 needles suitable for working small circumferences in the round.

Always use a needle size that will result in the correct gauge after blocking.

4 stitch markers (including one unique for beginning of round), crochet hook, stitch holders, tapestry needle

YARN QUALITY

 **Unicorn Solid**, Hobbii

Fingering / 4-ply-weight

75% Wool, 25% Polyamide

100 g (3.5 oz) = 400 m (437 yds)

GAUGE

32 sts & 50 rows = 10cm / 4" over St st worked in the round on 2mm needles, after blocking.

SIZE

1 (2, 3)

MEASUREMENTS

Finished hand circumference: 15.5 (18, 20.5)cm / 6 (7½, 8)"

PATTERN INFORMATION

The Kvitka fingerless mittens are worked from the down top in the round, starting with the folded cuff. After this a section is worked in a 1x1 Twisted Rib. The top of the hand is then worked in a flower pattern (loop stitch), with the thumb gusset in waste yarn. The thumbs are finished after the rest of the mitts are completed. The left and right mitts are knit the same way except that the thumbs are knitted in different directions according to the description that follows.

HASHTAGS FOR SOCIAL MEDIA

#KvitkaMitts #PomPomXHobbii

BUY THE YARN HERE

<https://shop.hobbii.com/kvitka-textured-flower-mittens>

QUESTIONS

If you have any questions regarding this pattern, please feel free to email us at support@hobbii.com. Please make sure to include the pattern's name and number.

Happy Crafting!

Pattern



ABBREVIATIONS

approx	Approximately
beg	Beginning
dec(s)	Decrease/s/d/ing
inc	Increase/s/d/ing
k	Knit
k2tog	Knit 2 stitches together
knwise	Knitwise
LH	Left-hand (e.g. LH needle)
M1L	Make 1 Left; pick up strand between the two needles from the front to back with the tip of left needle, knit into the back of this stitch
M1R	Make 1 Right; pick up strand between the two needles from back to front with the tip of left needle, knit into the front of this stitch
patt	Pattern
PM	Place Marker
p	Purl
rep	Repeat
RH	Right-hand (e.g. RH needle)
RS	Right side
sl	Slip
SM	Slip Marker
sk2po	Sl 1 st knitwise, k2tog, pass slipped stitch over
ssk	Slip 2 stitches knitwise one at a time, knit them together through back loop
st(s)	Stitch(es)
St st	Stocking stitch / Stockinette
tbl	Through the back loop
WS	Wrong side

STITCH GLOSSARY

Provisional cast on

Using a crochet hook, a knitting needle and waste yarn, begin by placing a slip knot on the crochet hook. Make a chain of a few stitches. Wrap the yarn around the knitting needle and use the hook to draw a loop through the original slip knot. You have now made one stitch on your needle. Repeat this motion until you have made as many stitches as you need in your cast on row. When you are done, break the yarn and pull it (not too tightly) through the live stitch still on the crochet hook.

When you start knitting with this provisional cast on using the pattern yarn A for the linking, you will later unzip this waste yarn to access the live stitches.

1x1 Twisted Rib (in the round):

Round 1: [K1tbl, p1] to end.

Rep round 1 for pattern.

ML&B (make loop & bobble):

Step 1: Insert RH needle into the center of the M1R from Row 5 of chart (2 rows below and 3 sts to the right) from front, wrap working yarn around RH needle, draw through loosely and place on LH needle, k1.

Step 2: Insert RH needle into the center of the M1R from Row 3 of chart (4 rows below and 2 sts to the right) from front, wrap working yarn around RH needle, draw through loosely and place on LH needle, k1.

Step 3: Insert RH needle into the center of the M1R from Row 1 of chart (6 rows below and 1 st to the right) from front, wrap working yarn around RH needle, draw through loosely and place on LH needle, k1.

Step 4: K1. Note: This is the st indicated by the "make loop and bobble" symbol in chart.

Step 5: Insert RH needle into the center of the M1L from Row 1 of chart (6 rows below and 1 st to the left) from front, wrap working yarn around RH needle, draw through loosely and place on LH needle, k1.

Step 6: Insert RH needle into the center of the M1L from Row 3 of chart (4 rows below and 2 sts to the left) from front, wrap working yarn around RH needle, draw through loosely and place on LH needle, k1.

Step 7: Insert RH needle into the center of the M1L from Row 5 of chart (2 rows below and 3 sts to the left) from front, wrap working yarn around RH needle, draw through loosely and place on LH needle, k1.

Step 8: Turn work, p7tog.

Step 9: Turn work, k1.

LML&B (left make loop & bobble):

Work steps 5-7 of ML&B.

Step 8: Turn, p4tog.

Step 9: Turn, k1.

RML&B (right make loop & bobble):

Work steps 1-4 of ML&B.

Step 8: Turn, p4tog.

Step 9: Turn, k1.

PATTERN BEGINS

Cuff (both alike)

Using waste yarn and a provisional method, cast on 48 (56, 64) sts. Join for working in the round being careful not to twist sts. PM to indicate beg of round.

Purl 6 rounds.

Next Round: Fold the work in half so that the cast-on sts are behind the working sts, for each st on needle, *pick up the corresponding st of the provisional cast-on edge, place it on the LH knitwise, k2tog live st with corresponding cast-on st; rep from * to end. 48 (56, 64) sts

Carefully remove the waste yarn from the cast-on sts.

Work in 1x1 Twisted Rib for 20 (20, 24) rounds.

Knit 1 round.

Purl 6 rounds.

Next round: Fold the last 6 rounds in half so that the first round purls are behind the working sts, for each st on needle, *pick up the corresponding st of the first round after Twisted rib, place it on the LH knitwise and k2tog live st with corresponding purl st; rep from * to end. 48 (56, 64) sts

Next round (inc): [K1, M1L, k11 (13, 15), M1L, k11 (13, 15), M1L, k1] twice. 54 (62, 70) sts

Body

Establish pattern

Note: Work the Flower Pattern according to the charts.

Round 1: K3 (0, 2), work round 1 (1, 9) of Chart A (B, B), k30 (31, 37) sts to end.

Round 2: K3 (0, 2), work next round of Chart A (B, B), k to end.

Working the next round of chart each time, rep round 2 a further 6 (6, 14) times, ending with round 8 of Chart A (B, B).

Work should measure approx. 8.5 (8.5, 10)cm / 3½ (3½, 4)" from the cast-on edge.

RIGHT MITT

Shape Thumb Gusset

Round 1 (inc): K3 (0, 2), work round 9 of Chart A (B, B), k1, PM, M1R, k1, M1L, PM, k to end. 56 (64, 72) sts; 3 thumb sts between markers

Round 2: K3 (0, 2), work next round of Chart A (B, B), k1, SM, k to marker, SM, k to end.

Round 3 (inc): K3 (0, 2), work next round of Chart A (B, B), k1, SM, M1R, k to marker, M1L, SM, k to end. 2 sts inc

Continuing in patt as set, rep rounds 2-3 a further 6 (7, 8) times, then rep round 2 **only** once more. 70 (80, 90) sts; 17 (19, 21) thumb sts

LEFT MITT

Shape Thumb Gusset

Round 1 (inc): K3 (0, 2), work round 9 of Chart A (B, B), k to last 2 sts, PM, M1R, k1, M1L, PM, k1. 56 (64, 72) sts; 3 thumb sts between markers

Round 2: K3 (0, 2), work next round of Chart A (B, B), [k to marker, SM] twice, k to end.

Round 3 (inc): K3 (0, 2), work next round of Chart A (B, B), k to marker, SM, M1R, k to marker, M1L, SM, k to end. 2 sts inc

Continuing in patt as set, rep rounds 2-3 a further 6 (7, 8) times, then rep round 2 **only** once more. 70 (80, 90) sts; 17 (19, 21) thumb sts

BOTH MITTS AGAIN

Separate Thumb

Next round: K3 (0, 2), work next round of Chart A (B, B), k to marker and remove it, slip next 17 (19, 21) sts to scrap yarn or holder, remove marker, cast on 1 st to RH needle using backwards loop method, k to end. 54 (62, 70) sts

HAND

Next round: K3 (0, 2), work next round of Chart A (B, B), k to end.

Work straight in patt as set until there are 3 (3, 3.5) repeats of Chart A (B, B) from beginning or approx. 1cm / ¼" less than desired hand length, ending with round 16 or 8.

Next round (dec): [K1, k2tog, k9 (11, 13), k2tog, k10 (12, 14), k2tog, k1] twice. 48 (56, 64) sts
Purl 6 rounds.

Cast off, leaving a tail at least triple the folded edge. Fold edge in half, thread tail onto tapestry needle, and sew cast-off sts on WS of pickup edge using whip stitch.

THUMBS

Place held thumb sts on needles. 17 (19, 21) sts

Right Thumb ONLY

With RS facing join yarn to 17 (19, 21) held thumb sts.

Round 1: K across held thumb sts, pick up and knit 3 sts from cast-on, PM for beg of round. 20 (22, 24) sts

Round 2: K to end.

Round 3 (dec): K to last 3 sts, sk2po. 18 (20, 22) sts

Left Thumb ONLY

Round 1: With RS facing, using needles and yarn, beg at right-hand side of thumb cast-on gap, pick up 3 sts from cast-on, knit across 17 (19, 21) held thumb sts, PM for beg of round. 20 (22, 24) sts

Round 2: K to end.

Round 3 (dec): Sk2po, k to end. 18 (20, 22) sts.

BOTH THUMBS AGAIN

Work straight in St st until thumb measures 2.5 (2.5, 3) cm / 1 (1, 1¼)" from base.

Knit 1 round.

Purl 6 rounds.

Cast off, leaving a tail at least triple the folded edge. Fold edge in half, thread tail onto tapestry needle, and sew cast-off sts on WS of pickup edge using whip stitch.

FINISHING

Weave in ends and block to measurements.

Enjoy!

SCHEMATIC



A. Finished hand circumference: 15.5 (18, 20.5)cm / 6 (7½, 8)"

B. Length: 16.5 (16.5, 19.5)cm / 6½ (6½, 7¾)"

Tetyana Vyazovska (she/her) from Odessa, Ukraine, is a knitwear designer who especially loves to create accessories. Her mom taught her to knit when she was seven years old. Now knitting has become more than just a hobby for her and she can be seen with her knitting almost everywhere she goes. She dreams of writing a book with patterns of mittens in the Ukrainian style. Find her on Instagram @tetyana_vayazovska

Key










-  Knit
-  Purl
-  M1 right leaning
-  M1 left leaning
-  K2tog
-  Ssk
-  Make loop and bobble
-  Right make loop and bobble
-  Left make loop and bobble

Chart A

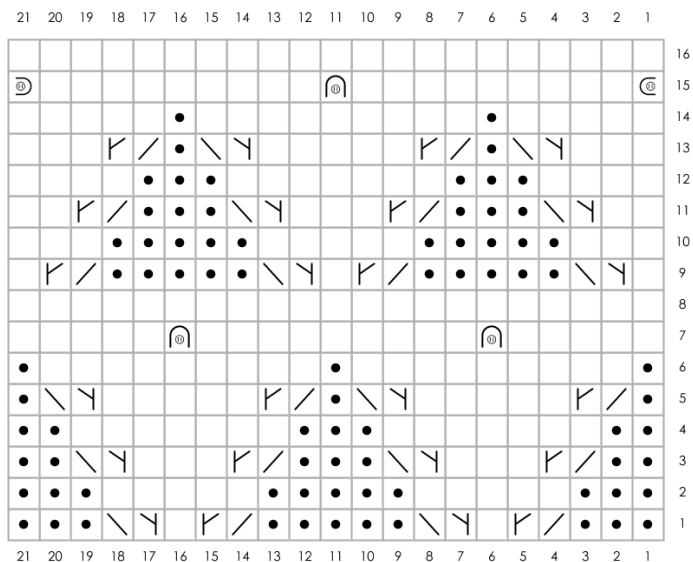
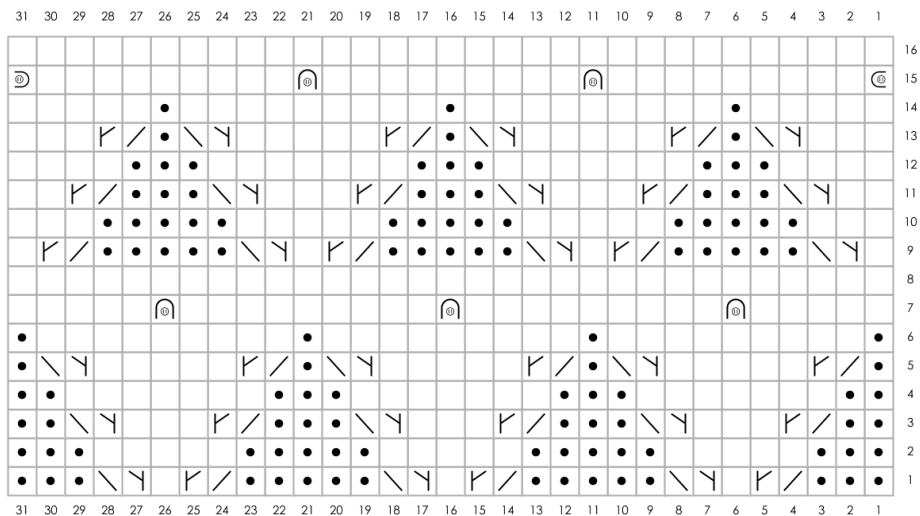


Chart B



WRITTEN INSTRUCTIONS FOR CHARTS

CHART A

Round 1: [P3, k2tog, M1R, k1, M1L, ssk, p2] twice, p1.

Round 2: [P3, k5, p2] twice, p1.

Round 3: [P2, k2tog, M1R, k3, M1L, ssk, p1] twice, p1.

Round 4: [P2, k7, p1] twice, p1.

Round 5: [P1, k2tog, M1R, k5, M1L, ssk] twice, p1.

Round 6: [P1, k9] twice, p1.

Round 7: [K5, ML&B, k4] twice, k1.

Round 8: K to end.

Round 9: [K1, M1L, ssk, p5, k2tog, M1R] twice, k1.

Round 10: [K3, p5, k2] twice, k1.

Round 11: [K2, M1L, ssk, p3, k2tog, M1R, k1] twice, k1.

Round 12: [K4, p3, k3] twice, k1.

Round 13: [K3, M1L, ssk, p1, k2tog, M1R, k2] twice, k1.

Round 14: [K5, p1, k4] twice, k1.

Round 15: LML&B, k9, ML&B, k9, RML&B.

Round 16: K to end.

CHART B

Note: Size 2 begins on round 1, size 3 begins on round 9.

Round 1: [P3, k2tog, M1R, k1, M1L, ssk, p2] 3 times, p1.

Round 2: [P3, k5, p2] 3 times, p1.

Round 3: [P2, k2tog, M1R, k3, M1L, ssk, p1] 3 times, p1.

Round 4: [P2, k7, p1] 3 times, p1.

Round 5: [P1, k2tog, M1R, k5, M1L, ssk] 3 times, p1.

Round 6: [P1, k9] 3 times, p1.

Round 7: [K5, ML&B, k4] 3 times, k1.

Round 8: K to end.

Round 9: [K1, M1L, ssk, p5, k2tog, M1R] 3 times, k1.

Round 10: [K3, p5, k2] 3 times, k1.

Round 11: [K2, M1L, ssk, p3, k2tog, M1R, k1] 3 times, k1.

Round 12: [K4, p3, k3] 3 times, k1.

Round 13: [K3, M1L, ssk, p1, k2tog, M1R, k2] 3 times, k1.

Round 14: [K5, p1, k4] 3 times, k1.

Round 15: LML&B, [k9, ML&B] twice, k9, RML&B.

Round 16: K to end.