



CROCHET PATTERN

Pining for Winter

Shawl

Design: Me and my yarn - Agneta Naucèr | Hobbii Design



MATERIALS

Highland Wool


A: 4 skeins of color 14, Wild River

B: 1 skein of color 35, Wild Berry

C: 3 skeins of color 04, Cappuccino

Crochet hook 4.5 mm / US 7

YARN QUALITY

 **Highland Wool**, Hobbii
100 % Peruvian Highland Wool
50 g / 1.8 oz = 175 m / 191 yds

GAUGE

17 dc x 9 rows = 10 cm x 10 cm / 4" x 4"

ABBREVIATIONS

sl st = slip stitch

ch = chain

chsp = chain space

sc = single crochet

dc = double crochet

trc = triple crochet

fpdc= front post double crochet

fptrc = front post triple crochet

bptrc = back post triple crochet

picot = chain three, sc in first ch made

tch = turning chain. A regular chain to help start the new row but does not count in the stitch count.

SIZE

One size

MEASUREMENTS

Width: 155 cm / 61"

Length: 81 cm / 32"

PATTERN INFORMATION

A decorative & fun crochet shawl for the more experienced crocheter. Scandinavian design with a delicate pinecone patterned lace edge. Pattern uses front & back post double & triple crochets to create the special texture of the shawl. Shawl is made top down & in three different sections.

Pattern includes: Complete charts for the three different pattern sections, stitch count for first pattern part & final rows on section one & two to help keep you on track.

Pattern suitable for more experienced crocheters.

HASHTAGS FOR SOCIAL MEDIA

#hobbiidesign #hobbiiiningforwinter
#piningforwintershawl #meandmyyarn
#hobbiiachristmastale

BUY THE YARN HERE

<https://shop.hobbii.com/pining-for-winter-shawl>



QUESTIONS

If you have any questions regarding this pattern, please feel free to email us at

support@hobbii.com

Please make sure to include the pattern's name and number.

Happy Crafting!

Pattern



INFO AND TIPS

* * = everything within these are worked into the same stitch.

[] x times = repeat instructions in brackets as a sequence as many times as written after the closing brackets. For example [ch, dc] 4 times.

() = stitch count, sums up each row's number of stitches after row is finished. 3 chains together that symbolizes a dc counts as a dc.

italic text = to clarify instructions on what goes together in the written instructions, like when several stitches need to be skipped. For example, *skip ch, sc & ch 3*. Not to be confused with the stitch count in italic at the end of each row within () in some pattern sections!

bold = to highlight sudden differences in pattern repeats so you don't miss them.

PATTERN INSTRUCTIONS

PATTERN SECTION 1 (col. A)

Start with a magic ring

1. Ch 3, *3 dc, ch 2, 4 dc* in magic ring.
8 dc, 2 ch
2. Ch 3, *2 dc* in dc, dc in dc, dc in dc, dc in dc,

2 dc, ch 2, 2 dc in middle chsp,

dc in dc, dc in dc, dc in dc, *3 dc* in dc.
16 dc, 2 ch
3. Ch 3, *2 dc* in dc, [dc in dc] until middle chsp,

2 dc, ch 2, 2 dc in middle chsp,

[dc in dc] until one dc remains unworked. *3 dc* in dc.
24 dc, 2 ch
4. Ch 3, *2 dc* in dc, [fpdc in dc] until middle chsp,

2 dc, ch 2, 2 dc in middle chsp,

[fpdc in dc] until one dc remains unworked. *3 dc* in dc.
22 fpdc, 10 dc, 2 ch
5. Ch 3, *2 dc* in dc, dc in dc, fptrc in dc, fptrc in fpdc, dc in fpdc, ch 2, skip 2 fpdc, dc in fpdc, fptrc in fpdc, fptrc in fpdc, dc in fpdc, ch 2, skip 2 fpdc, dc in fpdc, fptrc in dc, fptrc in dc,

2 dc, ch 2, 2 dc in middle chsp,

fptrc in dc, fptrc in dc, dc in fpdc, ch 2, skip 2 fpdc, dc in fpdc, fptrc in fpdc, fptrc in fpdc, dc in fpdc, ch 2, skip 2 fpdc, dc in fpdc, fptrc in fpdc, fptrc in dc, dc in dc, *3 dc* in dc.
12 fptrc, 20 dc, 10 ch
6. Ch 3, *2 dc* in dc, ch 2, skip 2 dc, dc in dc, bptrc in fptrc, bptrc in fptrc, dc in dc, ch 2, skip chsp, dc in dc, bptrc in fptrc, bptrc in fptrc, dc in dc, ch 2, skip chsp, dc in dc, bptrc in fptrc, bptrc in fptrc, dc in dc, ch, skip dc,

2 dc, ch 2, 2 dc in middle chsp,

ch, skip dc, dc in dc, bptrc in fptrc, bptrc in fptrc, dc in dc, ch 2, skip chsp, dc in dc, bptrc in fptrc, bptrc in fptrc, dc in dc, ch 2, skip chsp, dc in dc, bptrc in fptrc, bptrc in fptrc, dc in dc, ch 2, skip 2 dc, *3 dc* in dc.

12 bptrd, 22 dc, 16 ch

7. Ch 3, *2 dc* in dc, dc in dc, dc in dc, [ch 2, skip chsp, dc in dc, fptrc in bptrc, fptrc in bptrc, dc in dc] until last relief cluster has been worked before middle. Ch 2, *skip ch & dc*, dc in dc,

2 dc, ch 2, 2 dc in middle chsp,

dc in dc, ch 2, *skip dc & ch*, dc in dc, fptrc in bptrc, fptrc in bptrc, dc in dc, [ch 2, skip chsp, dc in dc, fptrc in bptrc, fptrc in bptrc, dc in dc] until last relief cluster before end of row has been worked. Ch 2, skip chsp, dc in dc, dc in dc, *3 dc* in dc.

12 fptrc, 28 dc, 18 ch

8. Ch 3, *2 dc* in dc, dc in dc, bptrc in dc, bptrc in dc, dc in dc, [ch 2, skip chsp, dc in dc, bptrc in fptrc, bptrc in fptrc, dc in dc] until last relief cluster has been worked before middle. Ch 2, skip chsp, dc in dc, bptrc in dc, bptrc in dc,

2 dc, ch 2, 2 dc in middle chsp,

bptrc in dc, bptrc in dc, dc in dc, [ch 2, skip chsp, dc in dc, bptrc in fptrc, bptrc in fptrc, dc in dc] until last relief cluster before end of row has been worked. Ch 2, skip chsp, dc in dc, bptrc in dc, bptrc in dc, dc in dc, *3 dc* in dc.

20 bptrc, 28 dc, 18 ch

9. Ch 3, *2 dc* in dc, ch 2, skip 2 dc, dc in dc, fptrc in bptrc, fptrc in bptrc, dc in dc, [ch 2, skip chsp, dc in dc, fptrc in bptrc, fptrc in bptrc, dc in dc] until last relief cluster before end of row has been worked. Ch, skip dc,

2 dc, ch 2, 2 dc in middle chsp,

ch, skip dc, dc in dc, fptrc in bptrc, fptrc in bptrc, dc in dc, [ch 2, skip chsp, dc in dc, fptrc in bptrc, fptrc in bptrc, dc in dc] until last relief cluster before end of row has been worked. Ch 2, skip 2 dc, *3 dc* in dc.

20 fptrc, 30 dc, 24 ch

10. Ch 3, *2 dc* in dc, dc in dc, dc in dc, [ch 2, skip chsp, dc in dc, bptrc in fptrc, bptrc in fptrc, dc in dc] until last relief cluster has been worked before middle. Ch 2, *skip ch & dc*, dc in dc,

2 dc, ch 2, 2 dc in middle chsp,

dc in dc, ch 2, *skip dc & ch*, dc in dc, bptrc in fptrc, bptrc in fptrc, dc in dc, [ch 2, skip chsp, dc in dc, bptrc in fptrc, bptrc in fptrc, dc in dc] until last relief cluster before end of row has been worked. Ch 2, skip chsp, dc in dc, dc in dc, *3 dc* in dc.

20 bptrc, 36 dc, 26 ch

11. Ch 3, *2 dc* in dc, dc in dc, fptrc in dc, fptrc in dc, dc in dc, [ch 2, skip chsp, dc in dc, fptrc in bptrc, fptrc in bptrc, dc in dc] until last relief cluster before end of row has been worked. Ch 2, skip chsp, dc in dc, fptrc in dc, fptrc in dc,

2 dc, ch 2, 2 dc in middle chsp,

fptrc in dc, fptrc in dc, dc in dc, [ch 2, skip chsp, dc in dc, fptrc in bptrc, fptrc in bptrc, dc in dc] until last relief cluster before end of row has been worked. Ch 2, skip chsp, dc in dc, fptrc in dc, fptrc in dc, dc in dc, *3 dc* in dc.

28 fptrc, 36 dc, 26 ch

12. Ch 3, *2 dc* in dc, ch 2, skip 2 dc, dc in dc, bptrc in fptrc, bptrc in fptrc, dc in dc, [ch 2, skip chsp, dc in dc, bptrc in fptrc, bptrc in fptrc, dc in dc] until last relief cluster has been worked before middle. Ch, skip dc,

2 dc, ch 2, 2 dc in middle chsp,

ch, skip dc, dc in dc, bptrc in fptrc, bptrc in fptrc, dc in dc, [ch 2, skip chsp, dc in dc, bptrc in fptrc, bptrc in fptrc, dc in dc] until last relief cluster before end of row has been worked. Ch 2, skip 2 dc, *3 dc* in dc.

28 bptrc, 38 dc, 32 ch

13. Ch 3, *2 dc* in dc, dc in dc, dc in dc, [ch 2, skip chsp, dc in dc, fptrc in bptrc, fptrc in bptrc, dc in dc] until last relief cluster before end of row has been worked. Ch 2, *skip ch & dc*, dc in dc,

2 dc, ch 2, 2 dc in middle chsp,

dc in dc, ch 2, *skip dc & ch*, dc in dc, fptrc in bptrc, fptrc in bptrc, dc in dc, [ch 2, skip chsp, dc in dc, fptrc in bptrc, fptrc in bptrc, dc in dc] until last relief cluster before end of row has been worked. Ch 2, skip chsp, dc in dc, dc in dc, *3 dc* in dc.

28 fptrc, 44 dc, 34 ch

14. Ch 3, *2 dc* in dc, dc in dc, bptrc in dc, bptrc in dc, dc in dc, [ch 2, skip chsp, dc in dc, bptrc in fptrc, bptrc in fptrc, dc in dc] until last relief cluster before end of row has been worked. Ch 2, skip chsp, dc in dc, bptrc in dc, bptrc in dc,

2 dc, ch 2, 2 dc in middle chsp,

bptrc in dc, bptrc in dc, dc in dc, [ch 2, skip chsp, dc in dc, bptrc in fptrc, bptrc in fptrc, dc in dc] until last relief cluster before end of row has been worked. Ch 2, skip chsp, dc in dc, bptrc in dc, bptrc in dc, dc in dc, *3 dc* in dc.

36 bptrc, 44 dc, 34 ch

Repeat row 9-14

4 more times - 38 rows in total made.

Row 38 - 100 bptrc, 108 dc, 98 ch (153 stitches/side, 306 stitches in total)

Symbol Key for Chart PATTERN SECTION 1





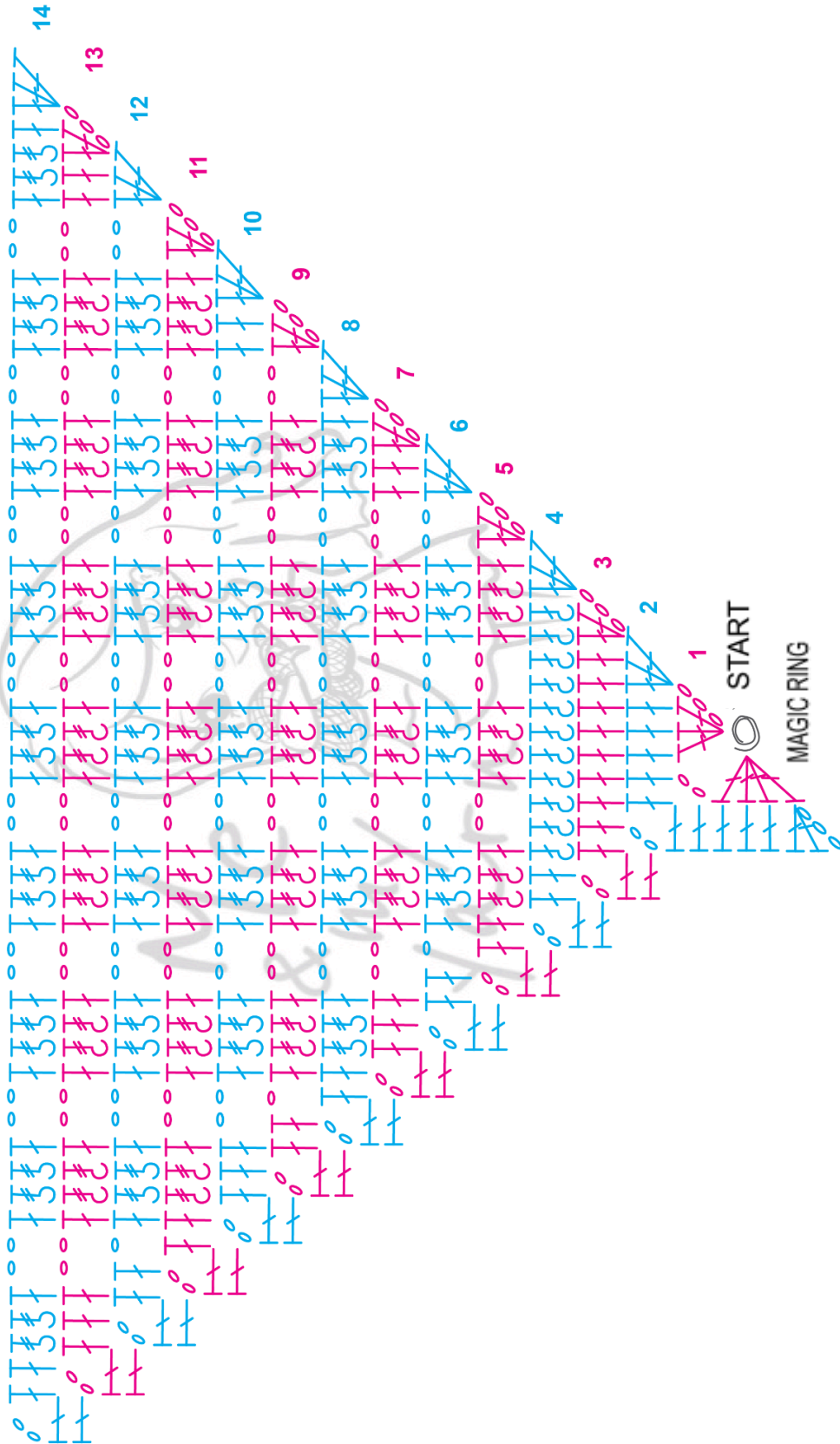
	Chain
	Double Crochet
	Front post treble crochet
	Back post treble crochet

Chart for PATTERN SECTION 1



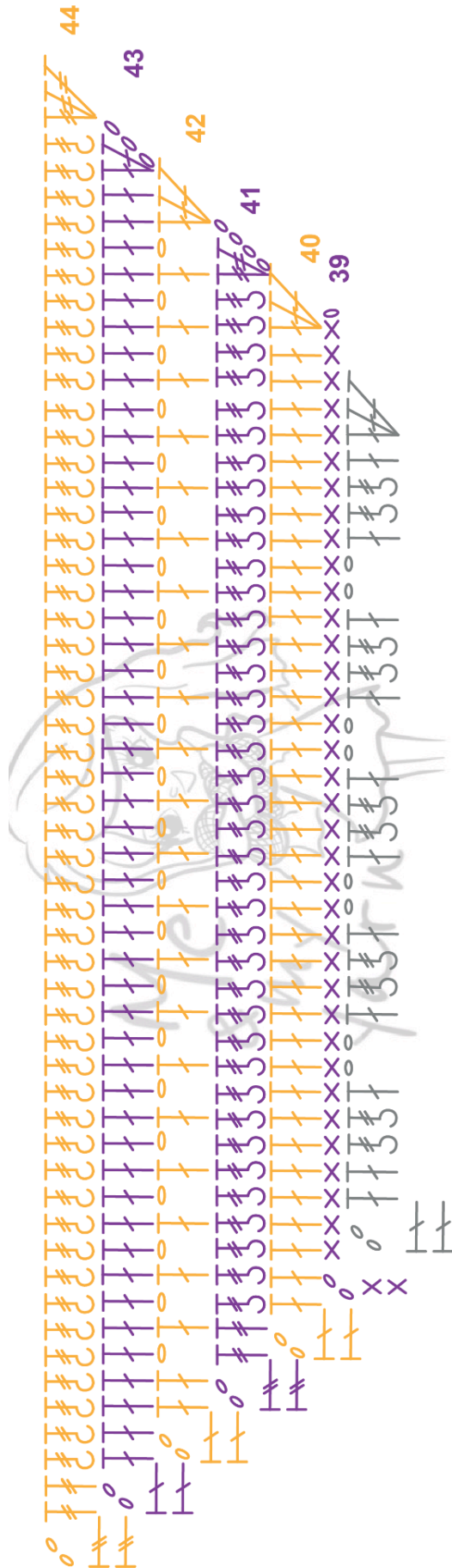
PATTERN SECTION 2 (col. B)

Chart on page 10 for this section.







Note! One skein will just about be enough. If you should come up short, go back and tighten the yarn tension a bit for this section.

39. Tch, *3 sc*, sc in every stitch until middle chsp,
2 sc, 2 ch, 2 sc in middle chsp,
sc in every stitch until one remains unworked, *3 sc*
40. *Ch 3, 2 dc*, dc in every stitch until middle chsp,
2 dc, 2 ch, 2 dc in middle chsp,
dc in every stitch until one remains unworked, *3 dc*
41. *Ch 4, 2 trc*, bptrc in every stitch until middle chsp,
2 trc, 2 ch, 2 trc in middle chsp,
bptrc in every stitch until one remains unworked, *3 trc*
42. *Ch 3, 2 dc*, ch, dc in trc, ch, skip trc, [dc in bptrc, ch, skip bptrc] until last bptrc before middle chsp has been skipped, dc in trc, ch, skip trc,
2 dc, 2 ch, 2 dc in middle chsp,
ch, skip trc, dc in trc, ch, skip bptrc, [dc in bptrc, ch, skip bptrc] until last bptrc has been skipped, dc in trc, ch, *3 dc*
43. Repeat row 40
44. *Ch 4, 2 trc*, fptrc in every stitch until middle chsp,
2 trc, 2 ch, 2 trc in middle chsp,
fptrc in every stitch until one remains unworked, *3 trc*
354 stitches in total (177 per side)

Chart for PATTERN SECTION 2



Symbol Key for Chart PATTERN SECTION 2

	Chain
	Single crochet
	Double Crochet
	Treble crochet
	Front post treble crochet
	Back post treble crochet

PATTERN SECTION 3 (col. C)

Fasten off. Turn work and start the third section at the other side tip with the new color.

Shawl will have 7.5 pinecones on each side plus one in the middle.

Chart for this section on page 15.

45. *Ch 3, 4 dc*, ch, *skip 2 trc & 2 fptrc*, sc in fptrc, [ch 3, skip 3 fptrc, sc in fptrc, ch 4, skip 4 fptrc, sc in fptrc, ch 3, skip 3 fptrc, sc in fptrc, ch, skip 4 fptrc, *9 dc* in fptrc, ch, skip 4 fptrc, sc in fptrc] until 9 stitches remain unworked before middle chsp. Ch 3, skip 3 fptrc, sc in fptrc, ch 3, skip 3 fptrc, sc in trc, ch, skip trc,

10 dc in middle chsp,

ch, skip trc, sc in trc, ch 3, skip 3 fptrc, sc in fptrc, ch 3, skip 3 fptrc, sc in fptrc, [ch, skip 4 fptrc, *9 dc* in fptrc, ch, skip 4 fptrc, sc in fptrc, ch 3, skip 3 fptrc, sc in fptrc, ch 4, skip 4 fptrc, sc in fptrc, ch 3, skip 3 fptrc, sc in fptrc] until 5 stitches remain unworked. Ch, *skip 2 fptrc & 2 trc*, *5 dc*

46. Ch 4, ch, dc in dc, ch, dc in dc, ch, dc in dc, ch, dc in dc, [ch, *skip ch, sc & ch 3*, *dc, dc, ch, dc, dc* in sc, skip 4 ch, *dc, dc, ch, dc, dc* in sc, *skip 3 ch, sc & ch*, [ch, dc in dc] 9 times] until last dc cluster before middle has been worked. Ch, *skip ch, sc & ch 3*, *dc, dc, ch, dc, dc* in sc, ch, *skip 3 ch, sc & ch*,

[dc, ch] until all dc in middle has been worked,

skip ch, sc & 3 ch, *dc, dc, ch, dc, dc* in sc, ch, *skip 3 ch, sc & ch*, [dc in dc, ch] 9 times, ch, [*skip ch, sc & 3 ch*, *dc, dc, ch, dc, dc* in sc, skip 4 ch, *dc, dc, ch, dc, dc* in sc, *skip 3 ch, sc & ch*, [ch, dc in dc] 9 times, ch] until last large dc cluster before end has been worked. *Skip ch, sc & ch 3*, *dc, dc, ch, dc, dc* in sc, skip 4 ch, *dc, dc, ch, dc, dc* in sc, ch, *skip 3 ch, sc & ch*, dc in dc, ch, dc in dc, ch, dc in dc, ch, dc in dc, ch, dc in dc

47. Ch 3, ch, sc in chsp, [ch 3, skip dc, sc in chsp] 3 times, [[ch 3, *skip dc, ch & 2 dc*, *2 dc* in chsp, ch, skip 4 dc, *2 dc* in chsp, ch 3, *skip 2 dc, ch & dc*, sc in chsp, [3 ch, skip dc, sc in chsp] 7 times]] until last pinecone cluster before middle has been worked. Ch 3, *skip dc, ch & 2 dc*, *dc, ch, dc* in chsp, ch 3, *skip 2 dc, ch & dc*,

sc in chsp, [ch 3, skip dc, sc in chsp] 8 times,

ch 3, *skip dc, ch & 2 dc*, *dc, ch, dc* in chsp, ch 3, *skip 2 dc, ch & dc*, sc in chsp, [[ch 3, skip dc, sc in chsp] 7 times, [ch 3, *skip dc, ch & 2 dc*, *2 dc* in chsp, ch, skip 4 dc, *2 dc* in chsp, ch 3, *skip 2 dc, ch & dc*, sc in chsp] until the last pinecone cluster of the row has been started (the half pinecone at the end). [Ch 3, skip dc, sc in chsp] 3 times, ch, dc in dc

48. Tch, sc in dc, ch 3, *skip ch & sc*, sc in chsp, ch 3, skip sc, sc in chsp, ch 3, skip sc, sc in chsp, [ch 3, *skip sc, 3 ch & 2 dc*, *2 dc, ch, 2 dc* in chsp, ch 3, *skip 2 dc, 3 ch & sc*, sc in chsp, [ch 3, skip sc, sc in chsp] 6 times] until last pinecone cluster before middle has been worked. Ch 3, *skip sc, 3 ch & dc*, dc in chsp, *skip dc, 3 ch & sc*,

sc in chsp, [ch 3, skip sc, sc in chsp] 7 times,

ch 3, *skip sc, 3 ch & dc*, dc in chsp, ch 3, *skip dc, 3 ch & sc*, sc in chsp, [[ch 3, skip sc, sc in chsp] 6 times, ch 3, *skip sc, 3 ch & 2 dc*, *2 dc, ch, 2 dc* in chsp, ch 3, *skip 2 dc, 3 ch & sc*, sc in chsp] until last pinecone cluster of the row has been started. Ch 3, skip sc, sc in chsp, ch 3, skip sc, sc in chsp, ch 3, *skip sc & ch*, sc in dc

49. Ch 3, ch, sc in chsp, ch 3, skip sc, sc in chsp, ch 3, skip sc, sc in chsp, [ch 3, *skip sc, 3 ch & 2 dc*, *2 dc, ch, 2 dc* in chsp, ch 3, *skip 2 dc, 3 ch & sc*, sc in chsp, [ch 3, skip sc, sc in chsp] 5 times] until last pinecone cluster before middle has been worked. Ch 3, *skip sc & 3 ch*, sc in dc, ch 3, *skip 3 ch & sc*,

sc in chsp, [ch 3, skip sc, sc in chsp] 6 times,

ch 3, *skip sc & 3 ch*, sc in dc, ch 3, *skip 3 ch & sc*, sc in chsp, [[ch 3, skip sc, sc in chsp] 5 times, ch 3, *skip sc, 3 ch & 2 dc*, *2 dc, ch, 2 dc* in chsp, ch 3, *skip 2 dc, 3 ch & sc*, sc in chsp] until last pinecone cluster of the row has been started. Ch 3, skip sc, sc in chsp, ch 3, skip sc, sc in chsp, ch, dc in sc

50. Tch, sc in dc, ch 3, *skip ch & sc*, sc in chsp, ch 3, skip sc, sc in chsp, [ch 3, *skip sc, 3 ch & 2 dc*, *2 dc, ch, 2 dc, ch, 2 dc* in chsp, *skip 2 dc, 3 ch & sc*, sc in chsp, [ch 3, skip sc, sc in chsp] 4 times] until last pinecone cluster before middle has been worked. Ch 3, *skip sc & 3 ch*, *2 dc, ch, 2 dc* in chsp, ch 3, *skip 3 ch & sc*,

sc in chsp, [ch 3, skip sc, sc in chsp] 5 times,

ch 3, *skip sc & 3 ch*, *2 dc, ch, 2 dc* in chsp, ch 3, *skip 3 ch & sc*, sc in chsp, [[ch 3, skip sc, sc in chsp] 4 times, ch 3, *skip sc, 3 ch & 2 dc*, *2 dc, ch, 2 dc, ch, 2 dc* in chsp, ch 3, *skip 2 dc, 3 ch & sc*, sc in chsp] until last pinecone cluster of the row has been started. Ch 3, skip sc, sc in chsp, ch 3, *skip sc & ch*, sc in dc

51. Ch 3, ch, sc in chsp, ch 3, skip sc, sc in chsp, [ch 3, *skip sc, 3 ch & 2 dc*, *2 dc, ch, 2 dc* in chsp, ch, skip 2 dc, *2 dc, ch, 2 dc* in chsp, *skip 2 dc, 3 ch & sc*, sc in chsp, [ch 3, skip sc, sc in chsp] 3 times] until last pinecone cluster before middle has been worked. Ch 3, *skip sc, 3 ch & 2 dc*, *2 dc, ch, 2 dc, ch, 2 dc* in chsp, **ch 4**, *skip 2 dc, 3 ch & sc*,

sc in chsp, [ch 3, skip sc, sc in chsp] 4 times,

ch 4, *skip sc, 3 ch & 2 dc*, *2 dc, ch, 2 dc, ch, 2 dc* in chsp, ch 3, *skip 2 dc, 3 ch & sc*, sc in chsp, [[ch 3, skip sc, sc in chsp] 5 times, ch 3, *skip sc, 3 ch & 2 dc*, *2 dc, ch, 2 dc* in chsp, ch, skip 2 dc, *2 dc, ch, 2 dc* in chsp, *skip 2 dc, 3 ch & sc*, sc in chsp] until last pinecone cluster of the row has been started. Ch 3, skip sc, sc in chsp, ch, dc in sc

52. Tch, sc in dc, ch 3, *skip ch & sc*, sc in chsp, [ch 3, *skip sc, 3 ch & 2 dc*, *2 dc, ch, 2 dc* in chsp, skip 2 dc, *2 dc, ch, 2 dc* in chsp, skip 2 dc, *2 dc, ch, 2 dc* in chsp, ch 3, *skip 2 dc, 3 ch & sc*, sc in chsp, ch 3, skip sc, sc in chsp, ch 3, skip sc, sc in chsp] until last pinecone cluster before middle has been worked. Ch 3, *skip sc, 3 ch & 2 dc*, *2 dc, ch, 2 dc* in chsp,

ch, skip 2 dc, *2 dc, ch, 2 dc* in chsp, **ch 5**, skip 2 dc, **4 ch** & sc,

sc in chsp, [ch 4, skip sc, sc in chsp] 3 times,

ch 5, skip sc, **4 ch** & 2 dc, *2 dc, ch, 2 dc* in chsp, ch, skip 2 dc, *2 dc, ch, 2 dc* in chsp, ch 3, skip 2 dc, 3 ch & sc, sc in chsp, [ch 3, skip sc, sc in chsp, ch 3, skip sc, sc in chsp, ch 3, skip sc, 3 ch & 2 dc, *2 dc, ch, 2 dc* in chsp, skip 2 dc, *2 dc, ch, 2 dc* in chsp, skip 2 dc, *2 dc, ch, 2 dc* in chsp, ch 3, skip 2 dc, 3 ch & sc, sc in chsp] until last pinecone cluster of the row has been started. Ch 3, skip sc & ch, sc in dc

53. Ch 3, ch, sc in chsp, [ch 3, skip sc, 3 ch & 2 dc, *2 dc, ch, 2 dc* in chsp, ch 2, skip 4 dc, *2 dc, ch, 2 dc* in chsp, ch 2, skip 4 dc, *2 dc, ch, 2 dc* in chsp, ch 3, skip 2 dc, 3 ch & sc, sc in chsp, ch 3, skip sc, sc in chsp] until last pinecone cluster before middle has been worked. Ch 3, skip sc, 3 ch & 2 dc, *2 dc, ch, 2 dc* in chsp, ch, skip 2 dc, *2 dc, ch, 2 dc* in chsp, ch, skip 2 dc, *2 dc, ch, 2 dc* in chsp, **ch 5**, skip 2 dc & 5 ch,

Sc in chsp, ch 4, skip sc, sc in chsp, ch 4, skip sc, sc in chsp,

ch 5, skip 5 ch & 2 dc, *2 dc, ch, 2 dc* in chsp, ch, skip 2 dc, *2 dc, ch, 2 dc* in chsp, ch, skip 2 dc, *2 dc, ch, 2 dc* in chsp, ch 3, skip 2 dc, 3 ch & sc, sc in chsp, [ch 3, skip sc, sc in chsp, ch 3, skip sc, 3 ch & 2 dc, *2 dc, ch, 2 dc* in chsp, ch 2, skip 4 dc, *2 dc, ch, 2 dc* in chsp, ch 2, skip 4 dc, *2 dc, ch, 2 dc* in chsp, ch 3, skip 2 dc, 3 ch & sc, sc in chsp] until last pinecone cluster of the row has been started. Ch, dc in sc

54. Tch, sc in dc, skip ch, [ch 3, skip sc, 3 ch & 2 dc, *3 dc, ch, 3 dc*, ch 2, skip 2 dc, 2 ch & 2 dc, *3 dc, ch, 3 dc*, ch 2, skip 2 dc, 2 ch & 2 dc, *3 dc, ch, 3 dc*, ch 3, skip 2 dc, 3 ch & sc, sc in chsp] until last pinecone cluster before middle has been worked. Ch 3, skip sc, 3 ch & 2 dc, *3 dc, ch, 3 dc*, ch, skip 2 dc, ch & 2 dc, *3 dc, ch, 3 dc*, ch, skip 2 dc, ch & 2 dc, *3 dc, ch, 3 dc*, ch 5, skip 2 dc, **5 ch** & sc,

sc in chsp, ch 4, skip sc, sc in chsp,

ch 5, skip sc, 3 ch & 2 dc, *3 dc, ch, 3 dc*, ch, skip 2 dc, ch & 2 dc, *3 dc, ch, 3 dc*, ch, skip 2 dc, ch & 2 dc, *3 dc, ch, 3 dc*, ch 3, skip 2 dc, 3 ch & sc, [sc in chsp, ch 3, skip sc, 3 ch & 2 dc, *3 dc, ch, 3 dc*, ch 2, skip 2 dc, 2 ch & 2 dc, *3 dc, ch, 3 dc*, ch 2, skip 2 dc, 2 ch & 2 dc, *3 dc, ch, 3 dc*, ch 3, skip 2 dc, 3 ch & sc] until end of row. Skip ch, sc in dc

55. Tch, sc in sc, ch 3, skip 3 ch & 3 dc, [*4 dc, ch, 4 dc*, ch 2, skip 3 dc, 2 ch & 3 dc, *4 dc, ch, 4 dc*, ch 2, skip 3 dc, 2 ch & 3 dc, *4 dc, ch, 4 dc*, ch 2, skip 3 dc, 3 ch, sc, 3 ch & 3 dc] until last pinecone cluster before middle has been worked & skipped. *4 dc, ch, 4 dc*, ch, skip 3 dc, ch & 3 dc, *4 dc, ch, 4 dc*, ch, skip 3 dc, ch & 3 dc, *4 dc, ch, 4 dc*, **ch 6**, skip 3 dc, 5 ch & sc,

sc in chsp,

ch 6, skip sc, 5 ch & 3 dc, *4 dc, ch, 4 dc*, ch, skip 3 dc, ch & 3 dc, *4 dc, ch, 4 dc*, ch, skip 3 dc, ch & 3 dc, *4 dc, ch, 4 dc*, ch 2, skip 3 dc, 3 ch, sc, 3 ch & 3 dc, [*4 dc, ch, 4 dc*, ch 2,

*skip 3 dc, 2 ch & 3 dc, *4 dc, ch, 4 dc*, ch 2, skip 3 dc, 2 ch & 3 dc, *4 dc, ch, 4 dc*, ch 2, skip 3 dc, 3 ch, sc, 3 ch & 3 dc] until last complete pinecone has been skipped. *4 dc, ch, 4 dc*, ch 2, skip 3 dc, 2 ch & 3 dc, *4 dc, ch, 4 dc*, ch 2, skip 3 dc, 2 ch & 3 dc, *4 dc, ch, 4 dc*, ch 3, skip 3 dc & 3 ch, sc in sc*

56. Ch 5, *skip sc, 3 ch & 2 dc, [sc in dc, sc in dc, *sc, picot, sc* in chsp, sc in dc, sc in dc, ch 3, skip 2 dc, 2 ch & dc, dc in dc, dc in dc, dc in dc, *2 dc, picot, 2 dc* in chsp, dc in dc, dc in dc, dc in dc, ch 3, skip dc, 2 ch & 2 dc, sc in dc, sc in dc, *sc, picot, sc* in chsp, sc in dc, sc in dc, ch 2, skip 2 dc, 2 ch & 2 dc] until last complete pinecone before middle has been skipped. Sc in dc, sc in dc, *sc, picot, sc* in chsp, sc in dc, sc in dc, ch 2, skip 2 dc, ch & dc, dc in dc, dc in dc, dc in dc, *2 dc, picot, 2 dc* in chsp, dc in dc, dc in dc, dc in dc, ch 2, skip dc, ch & 2 dc, sc in dc, sc in dc, *sc, picot, sc* in chsp, sc in dc, sc in dc, ch 5, skip 2 dc & 5 ch, sc in chsp,*

**2 dc, picot, 2 dc* in sc,*

*sc in chsp, ch 5, skip 5 ch & 2 dc, sc in dc, sc in dc, *sc, picot, sc* in chsp, sc in dc, sc in dc, ch 2, skip 2 dc, ch & dc, dc in dc, dc in dc, dc in dc, *2 dc, picot, 2 dc* in chsp, dc in dc, dc in dc, dc in dc, ch 2, skip dc, ch & 2 dc, sc in dc, sc in dc, *sc, picot, sc* in chsp, sc in dc, sc in dc, [ch 2, skip 2 dc, 2 ch & 2 dc, sc in dc, sc in dc, *sc, picot, sc* in chsp, sc in dc, sc in dc, ch 3, skip 2 dc, 2 ch & dc, dc in dc, dc in dc, dc in dc, *2 dc, picot, 2 dc* in chsp, dc in dc, dc in dc, dc in dc, ch 3, skip dc, 2 ch & 2 dc, sc in dc, sc in dc, *sc, picot, sc* in chsp, sc in dc, sc in dc] until last pattern segment of the row has been worked. Ch 5, skip 2 dc & 3 ch, sl st in sc*

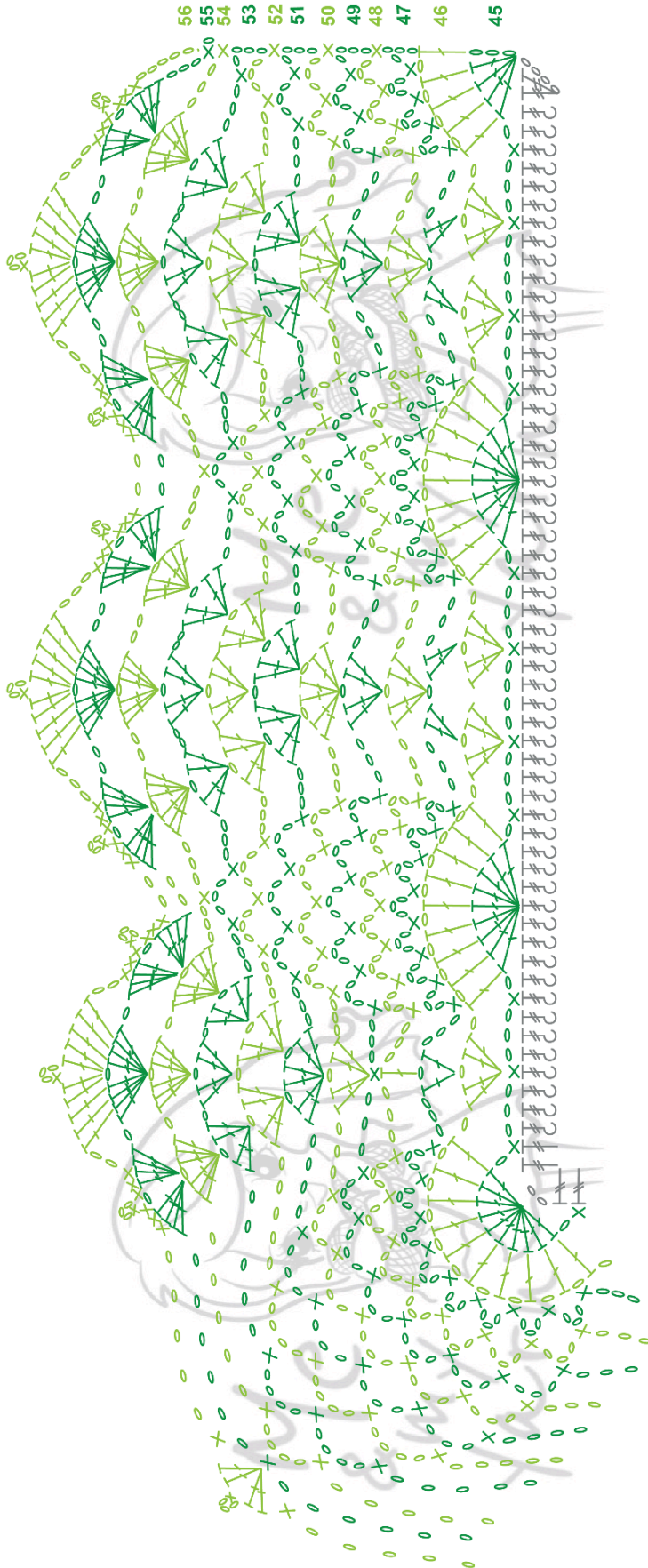
Fasten off.

Enjoy!

Me and my yarn, Agneta Nauclèr



Chart for PATTERN SECTION 3



Symbol Key for Chart PATTERN SECTION 3

.	Slip sts
o	Chain
x	Single crochet
F	Double Crochet
F ₂	Front post double Crochet
F ₃	Treble crochet
F ₃ ₂	Front post treble crochet
F ₃ ₃	Back post treble crochet
P	Picot