



KNITTING PATTERN

Lucia Scarf

Design: Jojo Knitwear | Hobbii Design



MATERIALS

2 (3) skeins of Divina, color Sangria (15)

Circular needle 5 mm (US 8) – 80 cm (32")

YARN QUALITY

 **Divina**, Hobbii

65 % Alpaca, 28 % Polyamide, 7 % Wool
50 g (1.75 oz) = 150 m (164 yds)

GAUGE

16 sts x 28 rows = 10 cm (4")

ABBREVIATIONS

st(s) = stitch(es)

k = knit

p = purl

RS = right side

WS = wrong side

yo = yarn over

k2tog = knit 2 stitches together

p3tog = purl 3 stitches together

co = cast on

bo = bind off

SIZE

S (L)

MEASUREMENTS

Length: 140 (170) cm / 55 (67)"

Width: 23 (32) cm / 9 (12.5)"

ABOUT THE PATTERN

Lucia Scarf is a scarf worked in garter stitch with a delicate lace pattern. The scarf is worked back and forth on a circular needle. The pattern includes lace pattern charts with instructions.

HASHTAGS FOR SOCIAL MEDIA

#hobbiidesign #luciascarf #jojoknitwear

#hobbiiluciascarf #jojoknitwearxhobbii

#hobbiiNordicChristmas

BUY THE YARN HERE

<https://shop.hobbii.com/lucia-scarf>

QUESTIONS

If you have any questions regarding this pattern, please feel free to email us at

support@hobbii.com

Please make sure to include the pattern's name and number.

Happy Crafting!

Pattern



INFORMATION AND TIPS

All rows with lace pattern are described, but the pattern also includes a chart that shows and explains how to set up the lace pattern.

SCARF

Using circular needle 5 mm (US 8), co 7 sts. K the first row.

ROW 1 (RS): Yo, k1, yo, k to end (= 2 increased sts).

ROW 2 (WS): Yo, k1, yo, k to end (= 2 increased sts).

Repeat rows 1-2 a total of 5 times = 27 sts.

ROW 3 (RS) INCREASE: Yo, k1, yo, k1, *yo, k2tog, yo, k1; repeat from * a total of 8 times, k1 (= 10 increased sts) = 37 sts.

ROW 4 (WS): Yo, k1, yo, k to end.

Repeat rows 1-2 a total of 10 times = 79 sts.

ROW 5 (RS) INCREASE: Yo, k1, yo, k1, *yo, k2tog, yo, k1; repeat from * a total of 25 times, k2tog (= 27 increased sts) = 106 sts.

ROW 6 (WS): Yo, k1, yo. K to end = 108 sts.

Repeat rows 1-2 a total of 10 times = 148 sts.

ROW 7 (RS) INCREASE: Yo, k1, yo, k1, *yo, k2tog, yo, k2tog, yo, k1; repeat from * a total of 29 times, k1 (= 31 increased sts) = 179 sts.

ROW 8 (WS): Yo, k1, yo, p until 2 sts remain, k2.

ROW 9: Yo, k1, yo, k1, k to end.

ROW 10: Yo, k1, yo, p until 2 sts remain, k2 = 185 sts.

ROW 11 – PATTERN ROW (RS): Yo, k1, yo, k2, *yo, p1, p3tog, p1, yo, k1; repeat from * a total of 30 times, k2 = 187 sts.

ROW 12 (WS): Yo, k1, yo, p until 2 sts remain, k2.

ROW 13: Yo, k1, yo, k to end.

ROW 14: Yo, k1, yo, p until 2 sts remain, k2 = 193 sts.

ROW 15 – PATTERN ROW (RS): Yo, k1, yo, k6, *yo, p1, p3tog, p1, yo, k1; repeat from * a total of 30 times, k6 = 195 sts.

ROW 16 (WS): Yo, k1, yo, p until 2 sts remain, k2

ROW 17: Yo, k1, yo, k to end.

ROW 18: Yo, k1, yo, p until 2 sts remain, k2 = 201 sts.

ROW 19 – PATTERN ROW (RS): Yo, k1, yo, k4, *yo, p1, p3tog, p1, yo, k1; repeat from * a total of 32 times, k4 = 203 sts.

ROW 20 (WS): Yo, k1, yo, p until 2 sts remain, k2

ROW 21: Yo, k1, yo, k to end.

ROW 22: Yo, k1, yo, p until 2 sts remain, k2 = 209 sts.

ROW 23 – ROW WITH HOLES (RS): Yo, k1, yo, *k2tog, yo; repeat from * until 2 sts remain, k2.

ROW 24 (WS): Yo, k1, yo, k to end = 213 sts.

Repeat rows 1-2 a total of 4 times = 229 sts. If you knit the scarf in size SMALL, repeat rows 1-2 an additional 6 times, then bo loosely. It is important that the bind off is not tight. You can use a larger needle size.

If you knit the scarf in size LARGE, continue like this:

ROW 25 – INCREASE: Yo, k1, yo, k1, *yo, k2tog, yo, k2tog, yo, k1; repeat from * a total of 45 times, k2 = 276 sts.

ROW 26 (WS): Yo, k1, yo, p until 2 sts remain, k2

ROW 27: Yo, k1, yo, k to end.

ROW 28: Yo, k1, yo, p until 2 sts remain, k2 = 282 sts.

ROW 29 – PATTERN ROW (RS): Yo, k1, yo, then k1, *yo, p1, p3tog, p1, yo, k1; repeat from * a total of 46 times, k4 = 284 sts.

ROW 30 (WS): Yo, k1, yo, p until 2 sts remain, k2

ROW 31: Yo, k1, yo, k to end.

ROW 32: Yo, k1, yo, p until 2 sts remain, k2 = 290 sts.

ROW 33 – PATTERN ROW (RS): Yo, k1, yo, k5, *yo, p1, p3tog, p1, yo, k1; repeat from * a total of 47 times, k2 = 292 sts.

ROW 34 (WS): Yo, k1, yo, p until 2 sts remain, k2

ROW 35: Yo, k1, yo, k to end.

ROW 36: Yo, k1, yo, p until 2 sts remain, k2 = 298 sts.

ROW 37 – PATTERN ROW (RS): Yo, k1, yo, k3, *yo, p1, p3tog, p1, yo, k1; repeat from * a total of 48 times, k6 = 300 sts.

ROW 38 (WS): Yo, k1, yo, p until 2 sts remain, k2

ROW 39: Yo, k1, yo, k to end.

ROW 40: Yo, k1, yo, p until 2 sts remain, k2 = 306 sts.



ROW 41 – ROW WITH HOLES: Yo, k1, yo, *k2tog, yo; repeat from *until 2 sts remain, k2 = 308 sts.

ROW 42 (WS): Yo, k1, yo, k to end.

Repeat rows 1-2 a total of 7 times = 328 sts. Then bo loosely. It is important that the bind off is not tight. You can use a larger needle size.

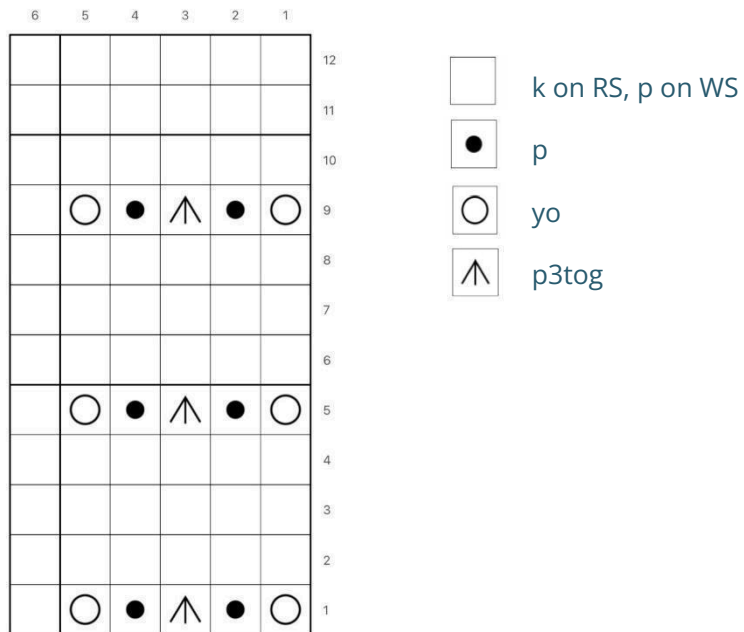
FINISHING

Weave in all ends.

Happy Crafting!

JOJO KNITWEAR

CHART



NB: The placement of the pattern repeat is important. The pattern repeats must be placed correctly above each other and cannot be displaced.