



KNITTING PATTERN

Woodland

Mittens

Design: Anna-Sofia Vintersol @loparefur | Hobbii Design

MATERIALS

MC/C1:

1 skein of **Highland Wool** color 09
1 skein of **Friends Kid Silk** color 124

C2:

1 skein of **Highland Wool** color 02
1 skein of **Friends Kid Silk** color 02

C3:

1 skein of **Highland Wool** color 29
1 skein of **Friends Kid Silk** color 52

C4:

1 skein of **Highland Wool** color 34
1 skein of **Friends Kid Silk** color 49

Circular needle: 4.5 mm, 40 cm / US 7, 16"
Or

Double pointed needles: 4.5 mm

Stitch markers


Embroidery needle


I only use circular needles, employing the Magic Loop technique exclusively.

GAUGE

18 sts x 24 rows = 10 cm x 10 cm / 4" x 4"

YARN QUALITY

 **Highland Wool**, Hobbii
100 % Peruvian Highland Wool
50 g / 1.8 oz = 175 m / 191 yds

 **Friends Kid Silk**, Hobbii
72 % Mohair, 25 % Silk, 3 % Wool
25 g / 0.9 oz = 200 m / 246 yds

QUESTIONS

If you have any questions regarding this pattern, please feel free to email us at support@hobbii.com. Please make sure to include the pattern's name and number.

Happy Crafting!

SIZE

(S, M, L)

MEASUREMENTS

Length of Mitten: (25, 27, 29) cm /
(9.8, 10.6, 11.4) Inches

Circumference of Mitten: (17, 19, 21) cm /
(7, 7.5, 8.25) Inches

PATTERN INFORMATION

The Woodland Mittens are chart-driven mittens worked seamlessly in the round from cuff to fingertip. The design features a delicate picot edge at the cuff and intricate colorwork inspired by woodland mushrooms. The thumb gusset is seamlessly integrated into the pattern, and the mittens are finished with a neat closure at the top.

Techniques: Includes moss-stitch rib, stockinette stitch, simple cable/lace work, simple embroidery, and darning-needle finishing.

Ease: Designed with a snug fit, but the pattern allows for adjustments by changing needle size or yarn weight.

HASHTAGS FOR SOCIAL MEDIA

#hobbiidesign #hobbiiwoodland
#annasofiavintersol

BUY THE YARN HERE

<https://shop.hobbii.com/woodland-mittens>

Pattern



ABBREVIATIONS

K = Knit
 P = Purl
 CO = Cast on
 MC = main color
 C = color

SPECIAL STITCHES

How to knit a Bobble or Popcorn

Knit into the front of the first stitch on your needle, into the back, and front again. (3 stitches on the needle).
 Turn your work and purl the 3 stitches back, then turn back and knit the 3 stitches again.
 Pass the first two stitches over the last stitch and move to the right-side needle to complete the bobble/popcorn.

How to knit a Latvian Braid

Round 1: Using both C3 and C4: Alternate between knitting 1 stitch with C4 and 1 stitch with C3, repeating this pattern until the end of the round.
 Round 2: With both C3 and C4 held in front: Purl 1 stitch with C3, then cross C4 over C3 and purl 1 stitch with C4. Continue crossing C3 over C4 and purl 1 stitch with C3. Repeat this cross-and-purl pattern until the end of the round.
 Round 3: With both C3 and C4 still in front: Purl 1 stitch with C3, then cross C4 under C3 and purl 1 stitch with C4. Continue crossing C3 under C4 and purl 1 stitch with C3. Repeat until the end of the round.

How to increase

Left-Leaning Increase (M1L):
 Pick up the bar between stitches from front to back and knit through the back loop.

Right-Leaning Increase (M1R):
 Pick up the bar between stitches from back to front and knit through the front loop.

How to decrease

Left-Leaning Decrease (SSK):

Slip 1 stitch knit wise, slip the next stitch knit wise, then knit these 2 stitches together through the back loops.

Right-Leaning Decrease (K2tog):

Knit 2 stitches together.

CUFF

CO 40 stitches with C1 using a 4.5 mm (US 7) circular or double-pointed needles, depending on your preference, using the long-tail co method.

Join in the round. Knit 6 rounds.

Now we will create the picot edge as follows: Make 1 yarn over, then knit the next 2 stitches together. Repeat until the end of the round. This technique creates small holes that form the picot edge.

Knit 4 more rounds, then increase 2 stitches evenly in the next round. You should now have 42 stitches.

MITTEN

Follow the chart for the Left Mitten or Right Mitten.

On row 14, begin knitting the thumb according to Chart Thumb 1 by placing a stitch marker between stitch 24 and 25 and between stitches 27 and 28 for the right mitten, and between stitch 38 and 39 and between stitches 41 and 42 for the left mitten.

Continue knitting the main chart while incorporating the thumb chart. Once thumb chart 1 is finished, place thumb stitches on scrap yarn or a stitch holder; we will finish the thumb at the end.

Continue with Chart and decrease according to instructions.

Bind off. Once you have completed the chart, cut your yarn, leaving a c. 15 cm (6 in) tail. Use your darning needle and thread the tail through the remaining stitches to close.

THUMB

Place the 13 thumb stitches on a needle. Pick up 3 stitches from the top of the thumb opening, as well as pick up 2 additional stitches from each side of the hole. Now you have 20 stitches. Place a stitch marker at the beginning of the round, making sure the pattern lines align. Complete Thumb Chart 2. Snip your yarn, leaving a long tail. Use your darning needle and thread the tail through the remaining stitches, just like you did for the top of the mitten. Draw the darning needle through the top center of the thumb to close.

Picot edge

On the reverse side of your knit, fold the cast-on edge up and pin it inwards. Use a thread and darning needle and attach the original cast-on edge to the mitten. Do not let your stitches show on the front side of the mitten.

Embroidery leaves

1. Cut a thread approximately 1 meter long from both types of C4 yarn.
2. Thread the embroidery needle and bring the thread from the wrong side of the garment to the right side, positioning it as close as possible to the edge of the popcorn stitch. Leave about a 5 cm tail on the inside.
3. Wrap the yarn around your pinky finger, then insert the needle back into the fabric, right next to the first exit point, pulling the yarn through to the wrong side again.
4. Bring the needle back to the right side of the fabric, about 1 cm (0.4 in) from the previous stitch.
5. Insert the needle back into the fabric while wrapping the thread around the section of yarn that was wrapped around your pinky finger.
6. Repeat the process to create additional leaf shapes.

Enjoy!

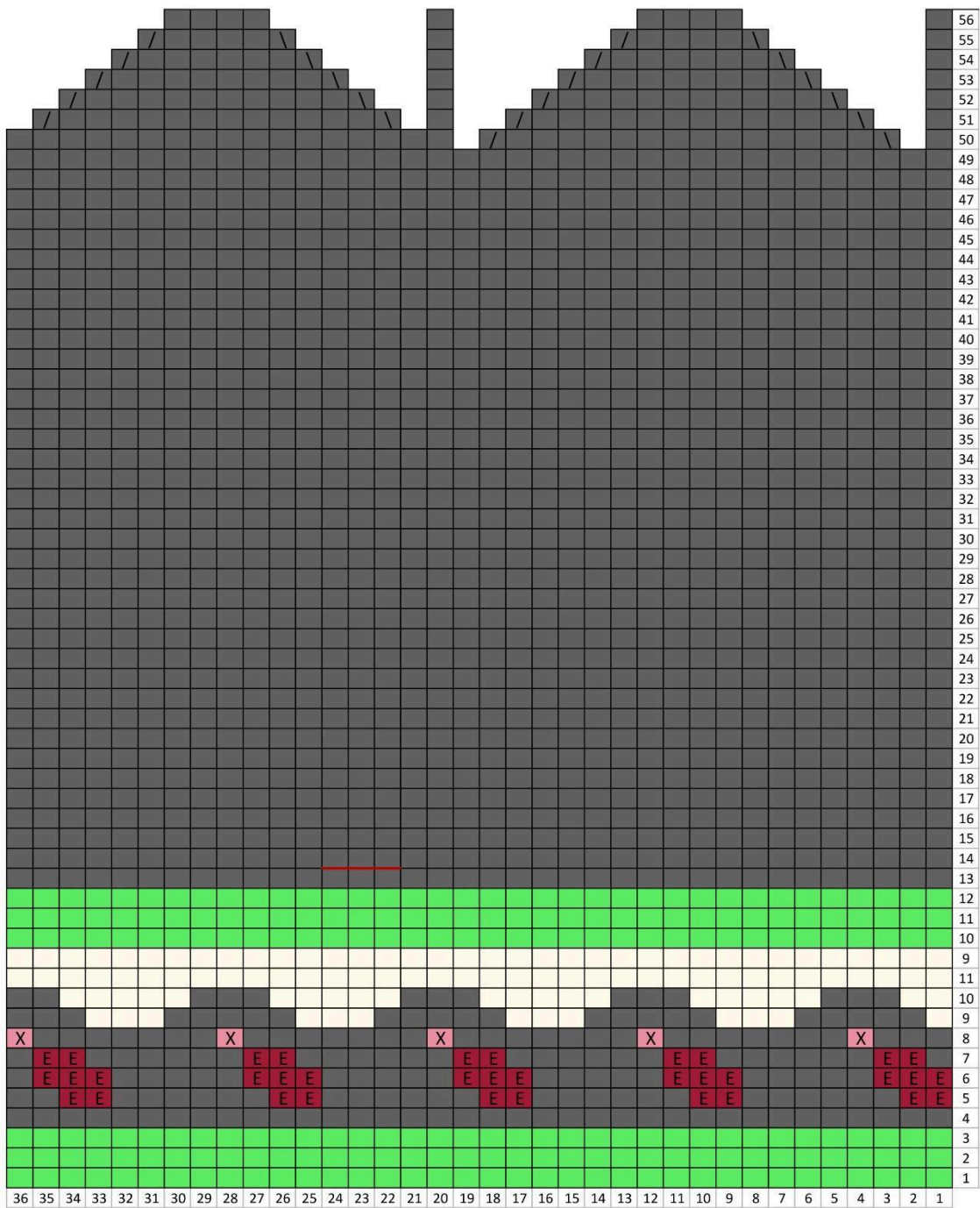
Anna-Sofia Vintersol @loparefur

CHARTS

Symbol Key

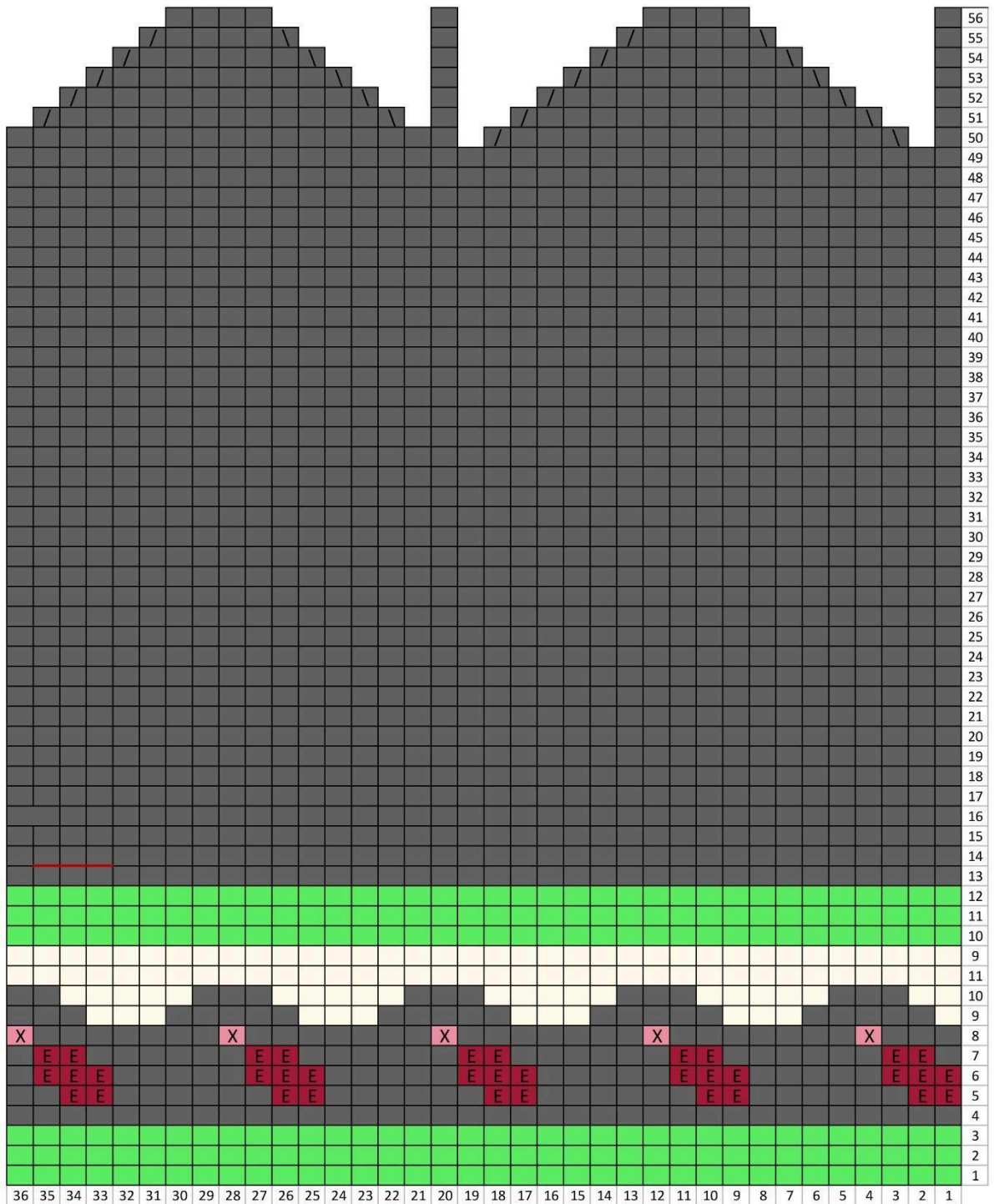
	MC/C1
	C2
	C4
	C3
	Latvian
	left leaning decrease
	right leaning decrease
	left leaning increase
	right leaning increase
	Popcorn/Bobble
	Embroidery

Size S: RIGHT MITTEN



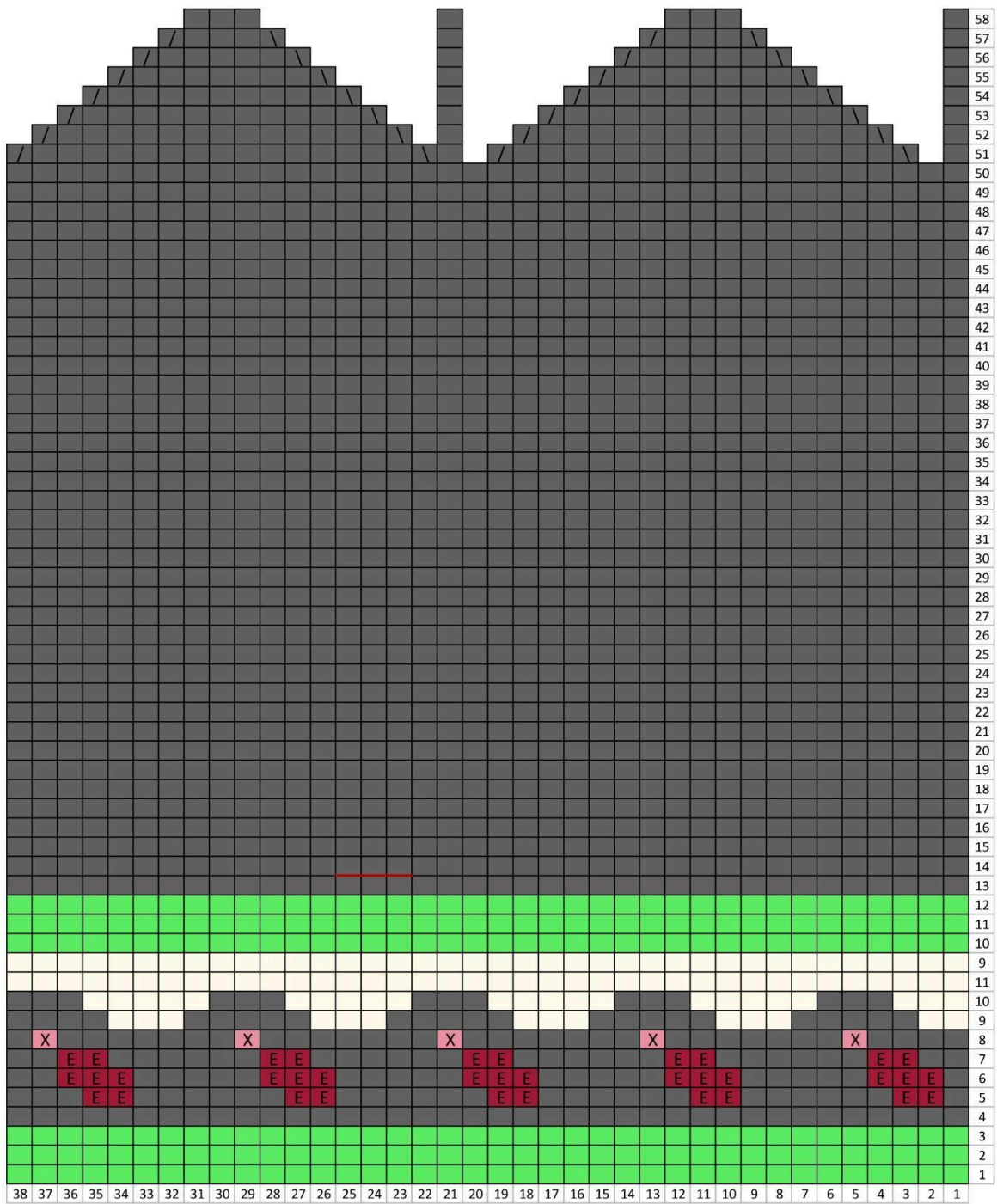
- * Round 14: start thumb
- * Round 28: place thumb on holder

Size S: LEFT MITTEN



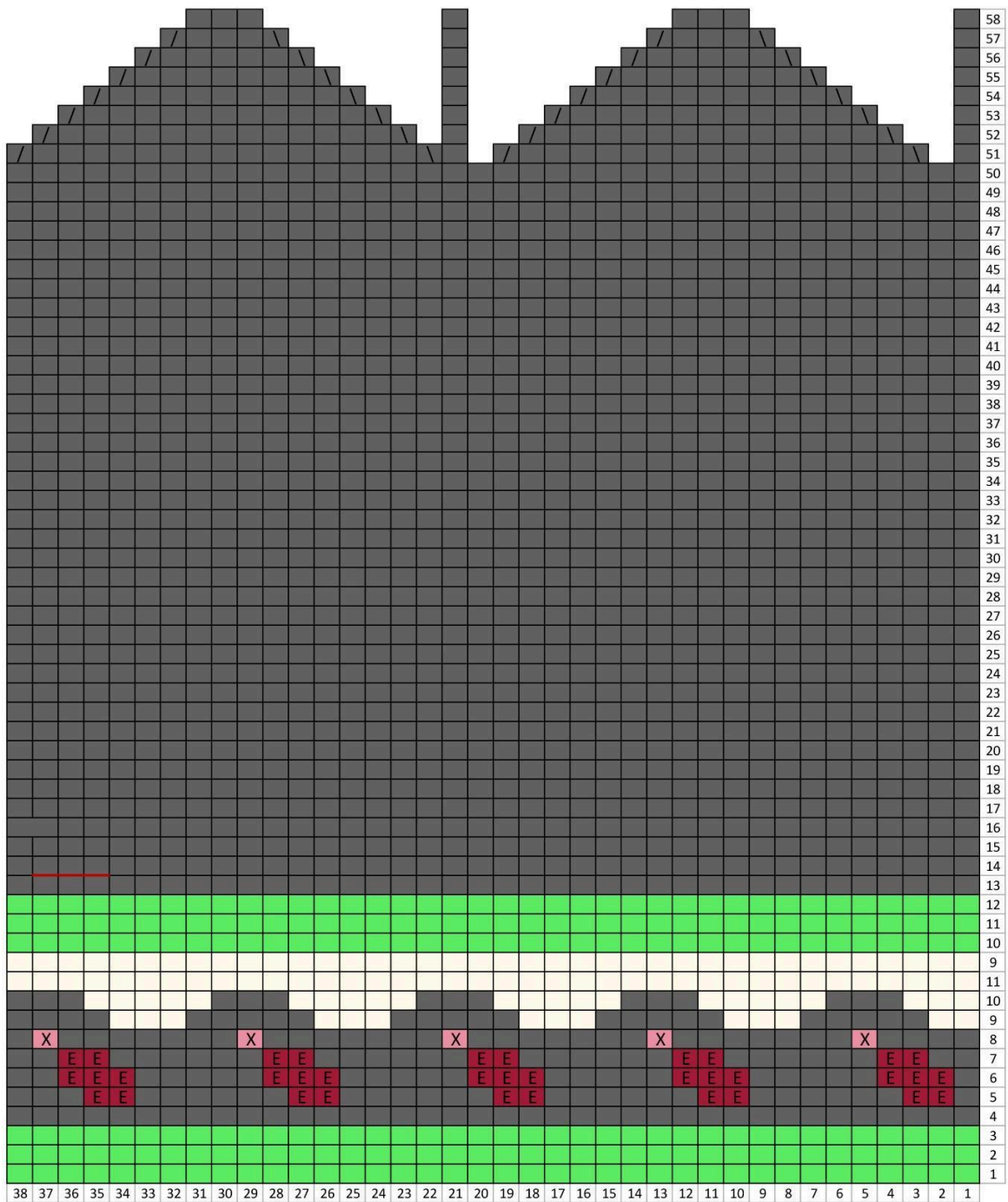
- * Round 14: start thumb
- * Round 28: place thumb on holder

Size M: RIGHT MITTEN



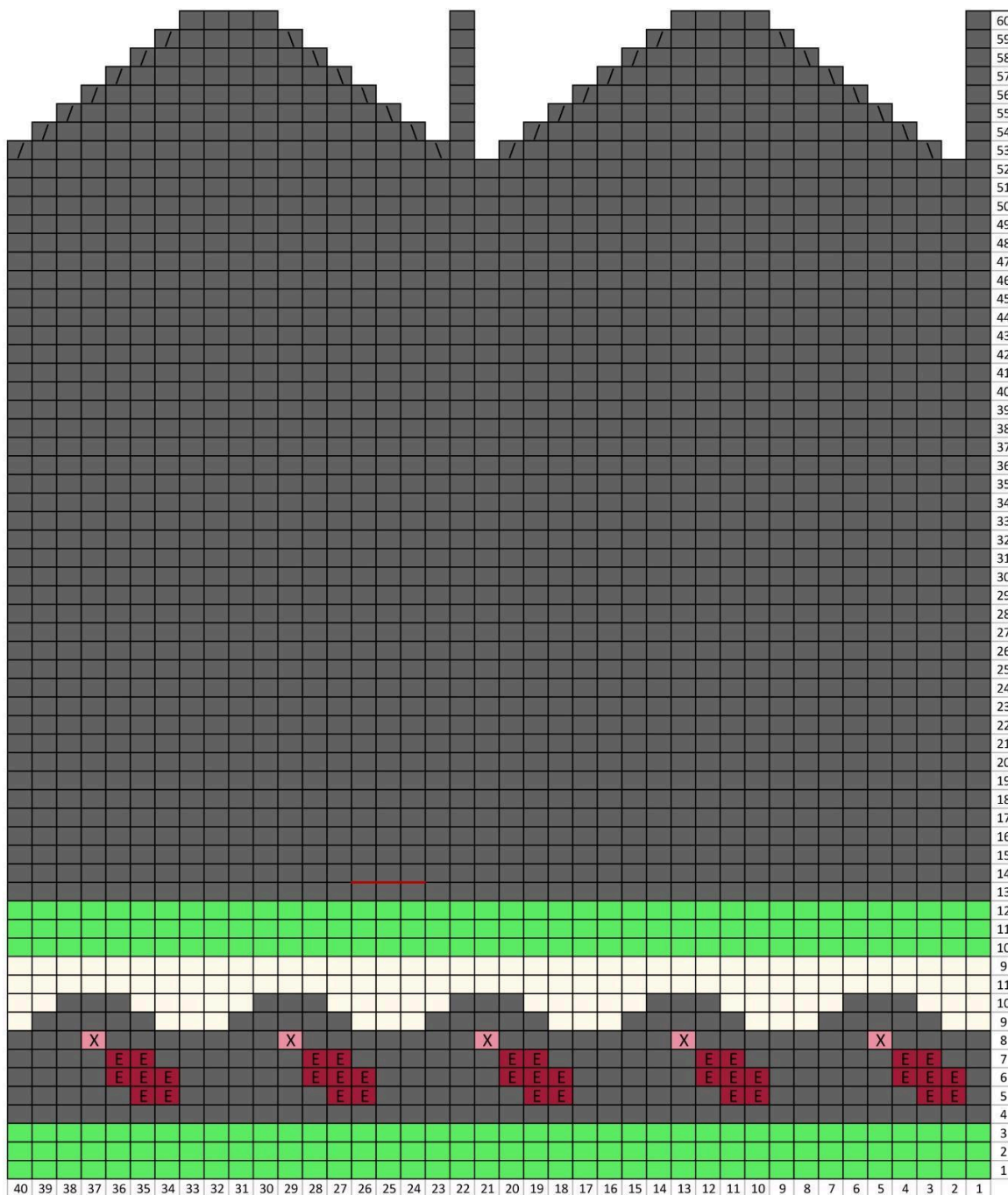
- * Round 14: start thumb
- * Round 28: place thumb on holder

Size M: LEFT MITTEN



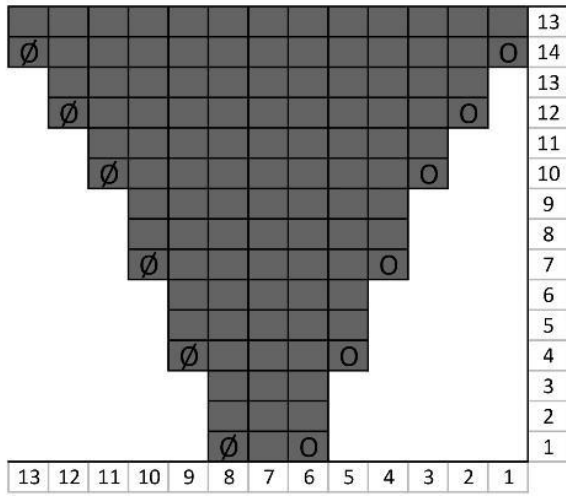
- * Round 14: start thumb
- * Round 28: place thumb on holder

Size L: LEFT MITTEN



- * Round 14: start thumb
- * Round 28: place thumb on holder

Thumb 1



Thumb 2

