



KNITTING PATTERN

Tipsy

Cowl

Design: Meg Roke | Hobbii Design



MATERIALS

Soft Alpaca

- 1 skein of color 45 (MC)
- 1 skein of color 25 (CC1)
- 1 skein of color 20 (CC2)

Circular needle 3.5 mm, 40 cm / US 4, 16"
Circular needle 3.25 mm, 40 cm / US 3, 16"

- 1 stitch marker
- Scissors
- Tapestry needle

YARN QUALITY

 **Soft Alpaca**, Hobbii

100% Alpaca
50 g / 1.75 oz = 165 m / 180 yds

GAUGE

30 sts x 30 rnds = 10 cm x 10 cm / 4" x 4"
in pattern

ABBREVIATIONS

- BO = bind off
- MC = main color
- CC1 = contrasting color 1
- CC2 = contrasting color 2
- CO = cast on
- K = knit
- P = purl
- Pm = place marker
- Rnd(s) = round(s)
- St(s) = stitch(es)

SIZE

S/M (L/XL)

MEASUREMENTS

Circumference: 57 (62) cm / 22.5 (24.5)"
Length: 26.5 (32) cm / 10.5 (12.75) "

PATTERN INFORMATION

This contemporary cowl is worked in the round from the bottom up beginning with a contrasting color cast-on followed by an inch of Single Rib Stitch worked in the main color. The three-color geometric pattern is knit entirely in Stockinette Stitch and features alternating rectangular blocks of color with the tip of the top right corner of each block knit in a darker color. The top and bottom edges of the cowl are worked the same.

Shown in smaller size S/M.

The Topsy Cowl comes with a matching Topsy Beanie.

HASHTAGS FOR SOCIAL MEDIA

#hobbiidesign #hobbiigraphical
#hobbiitipsy

BUY THE YARN HERE

<https://shop.hobbii.com/tipsy-cowl>



QUESTIONS

If you have any questions regarding this pattern, please feel free to email us at support@hobbii.com
Please make sure to include the pattern's name and number.

Happy Crafting!

Pattern



INFO AND TIPS

Single Rib Stitch

All Rnds: K1, p1.

Stockinette Stitch

All Rnds: Knit.

BODY

Rib edge

With CC2, CO 168 (184) sts on smaller circular needles using the long-tail cast-on method or preferred method of stretchy cast-on.

Cut CC2, add MC.

Work one rnd of Single Rib Stitch pattern.

Pm, join to work in the rnd.

Work in Single Rib Stitch pattern for 2.5 cm / 1".

Body

Change to larger circular needles.

Knit 1 rnd in MC.

Work Rnds 1-16 of the Colorwork Chart in Stockinette Stitch, repeating the 8-st pattern 21 (23) times across each rnd.

Repeat Rnds 1-16 three (four) more times.

Knit 1 rnd in MC.

Rib edge

Change to smaller circular needles.

With MC, work in Single Rib Stitch pattern for 2.5 cm / 1".

Cut yarn, add CC2.

BO with CC2 in pattern.

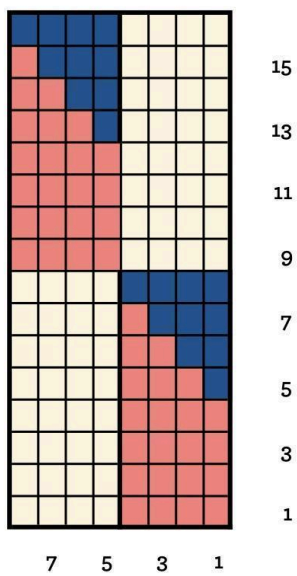
FINISHING

Weave in all loose ends.

Wet block to measurements.

Colorwork Chart

- MC
- CC1
- CC2



Enjoy!

Meg Roke