



KNITTING PATTERN

# Tipsy

## Beanie

Design: Meg Roke | Hobbii Design



## MATERIALS


### Soft Alpaca

1 skein of color 45 (MC)  
1 skein of color 25 (CC1)  
1 skein of color 20 (CC2)

Circular needle 3.5 mm, 40 cm / US 4, 16"  
Double pointed needles 3.5 mm / US 4  
Circular needle 2.75 mm, 40 cm / US 2, 16"

8 stitch markers  
Scissors  
Tapestry needle

## YARN QUALITY

 **Soft Alpaca**, Hobbii  
100% Alpaca  
50 g / 1.75 oz = 165 m / 180 yds

## GAUGE

30 sts x 30 rnds = 10 cm x 10 cm / 4" x 4"  
in pattern

## ABBREVIATIONS

BO = bind off  
MC = main color  
CC1 = contrasting color 1  
CC2 = contrasting color 2  
CO = cast on  
K = knit  
K2tog = knit 2 stitches together (1 stitch decreased)  
M = marker  
P = purl  
Pm = place marker  
Rnd(s) = round(s)  
Sm = slip marker  
St(s) = stitch(es)

## QUESTIONS

If you have any questions regarding this pattern, please feel free to email us at [support@hobbii.com](mailto:support@hobbii.com)  
Please make sure to include the pattern's name and number.

Happy Crafting!

## SIZE

S (M, L, XL)

## MEASUREMENTS

Circumference: 51.5 (54, 57, 59.5) cm / 20.25 (21.25, 22.5, 23.5)"  
Length: 21 (21.5, 22, 23) cm / 8.25 (8.5, 8.75, 9)"

## PATTERN INFORMATION

This contemporary hat is worked in the round from the bottom up beginning with a contrasting color cast-on followed by a Single Rib Stitch brim worked in the main color. The three-color geometric pattern is knit entirely in Stockinette Stitch and features alternating rectangular blocks of color with the tip of the top right corner of each block knit in a darker color. The crown of the hat is worked in Stockinette Stitch in the main color with swirling right-leaning decreases every round.

Shown in size L.

The Tippy Beanie comes with a matching Tippy Cowl.

## HASHTAGS FOR SOCIAL MEDIA

#hobbiidesign #hobbiigraphical  
#hobbiitipsy

## BUY THE YARN HERE

<https://shop.hobbii.com/tippy-beanie>



# Pattern



## INFO AND TIPS

### Single Rib Stitch

All Rnds: K1, p1.

### Stockinette Stitch

All Rnds: Knit.

## BODY

### Rib edge

With CC2, CO 152 (160, 168, 176) sts on smaller circular needles using the long-tail cast-on method or preferred method of stretchy cast-on.

Cut CC2, add MC.

Work one rnd of Single Rib Stitch pattern.

Pm, join to work in the rnd.

Work in Single Rib Stitch pattern until brim measures 3 (4, 4, 4.5) cm / 1.25 (1.5, 1.5, 1.75)" from edge.

### Body

Change to larger circular needles.

Knit 1 rnd in MC.

Work Rnds 1-16 of the Colorwork Chart in Stockinette Stitch, repeating the 8-st pattern 19 (20, 21, 22) times across each rnd.

Repeat Rnds 1-16 one more time.

Cut CC1 and CC2.

### Crown

Change to double pointed needles as needed.

Next Rnd: (K17 (18, 19, 20) sts, k2tog, pm) seven times, k17 (18, 19, 20) sts, k2tog. [144 (152, 160, 168) total sts]

Decrease Rnd: (Knit to two sts before m, k2tog, sm) eight times. [136 (144, 152, 160) total sts]

Repeat last Decrease Rnd until 16 sts remain.

Next rnd: (K2tog) eight times. [8 total sts]

Cut MC leaving a 15 cm / 6" tail.

Weave tail through remaining live sts, pull tight and secure.

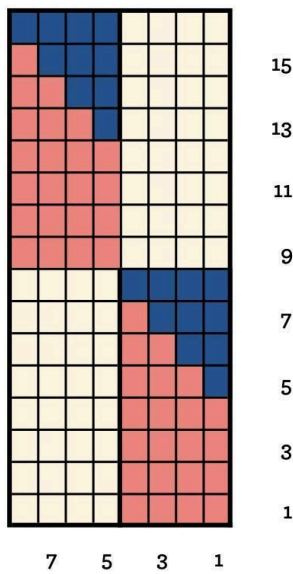
## FINISHING

Weave in all loose ends.

Wet block to measurements.

## Colorwork Chart

-  MC
-  CC1
-  CC2



**Enjoy!**

Meg Roke