



KNITTING PATTERN

Wintergarden

Hat

Design: cold comfort knits | Hobbii Design

MATERIALS

Divina

MC: 1 (1) skein of color 25

C1: 1 (1) skein of color 32

C2: 1 (1) skein of color 06

Circular needle 4.5 mm, 40 cm / US 7, 16"
4 x Double-pointed needles 4.5mm / US 7

Unique BOR stitch marker
Optional 6 (7) additional markers to mark
pattern repeats

For the Blue/Grey/pink version:

MC: 1 (1) skein of Divina color 24

C1: 1 (1) skein of Divina color 03

C2: 1 (1) skein of Divina color 12

YARN QUALITY

 Divina, Hobbii

65 % Alpaca, 28 % Polyamide, 7 % Merino Wool
50 g / 1.75 oz = 150 m / 165 yds

GAUGE

21 sts x 19 rds = 10 cm x 10 cm / 4" x 4" in
Chart/Pattern, after blocking

SIZE

S/M (L/XL)

MEASUREMENTS

Width: 47 (55) cm / 18.5" (21.5")

Length: 23 (23) cm / 9" (9")

Colorwork motifs become distorted when overstretched width-wise. Be sure to choose the size that corresponds as closely as possible to your actual head circumference. Remember, blocking can make hand-knits larger but not smaller, and hats tend to stretch with wear. Model is wearing size L/XL, with 54.5 cm / 21.5" actual head circumference.

PATTERN INFORMATION

The Wintergarden Hat is a rare unicorn indeed! Not only does it break the two-colors-per-round "rule" of stranded colorwork by using three colors, it also forgoes filler motifs. Omitting these fillers creates a bold motif on the outside of the hat, while extra floats on the inside of the hat create a layer of cosy-warm insulation

This pattern is intended for knitters who are experienced at stranded colorwork, float trapping and reading charts. Knitting with three colors requires strategic float trapping; directions for exactly how/where to trap floats are embedded within the chart, hooray!

HASHTAGS FOR SOCIAL MEDIA

#hobbiidesign #hobbiwintergarden

BUY THE YARN HERE

<https://shop.hobbii.com/wintergarden-hat>

QUESTIONS

If you have any questions regarding this pattern, please feel free to email us at support@hobbii.com. Please make sure to include the pattern's name and number.

Happy Crafting!

Pattern



ABBREVIATIONS

MC = main color

C1 = contrast color #1

C2 = contrast color #2

BOR(m) = beginning of round (marker)

K2tog = knit 2 stitches together—1 stitch decreased

CDD (central double decrease): slip two stitches together at the same time as if to knit, knit one stitch, then pass the two slipped stitches over the knit stitch—2 stitches decreased

INFO AND TIPS

In stranded colorwork, it is generally accepted that the bottom float appears more dominant than the top float. What happens when you add a third color? Easy! It becomes the middle float! Maintain its position below the top float and above the bottom float. **For optimal dominance, I recommend assigning your yarns as: MC Top float / C1 Middle Float / C2 Bottom Float.**

BODY

Cast On: With MC and circular needle, use long tail cast-on method to cast on 98 (112) stitches. Knit 1 stitch to join work, *being careful not to twist stitches*. Place BORm.

Ribbing: Work 3 (3) rounds of ribbing as follows: *p1, k1; repeat from * to end of round.

Chart: Work chart rounds 1-33. You will work the 14-stitch pattern repeat 7 (8) times per round.

Crown Set-Up: Remove BORm. *Using MC only*, Knit 7 stitches. Re-place BORm = **New BOR**.

Crown Decreases: (Change to double-pointed needles on Round 6)

Round 1: K6, CDD, *K11, CDD; repeat from * to last 5 stitches, K5—84 (96).

Round 2 and all even # Rounds: Knit all stitches.

Round 3: K5, CDD, *K9, CDD; repeat from * to last 4 stitches, K4—70 (80).

Round 5: K4, CDD, *K7, CDD; repeat from * to last 3 stitches, K3—56 (64).

Round 7: K3, CDD, *K5, CDD; repeat from * to last 2 stitches, K2—42 (48).

Round 9: K2, CDD, *K3, CDD; repeat from * to last stitch, K1—28 (32).

Round 11: *K1, CDD; repeat from * to end of round—14 (16).

Round 13: *K2tog; repeat from * to end of round—7 (8) stitches remain.



FINISHING

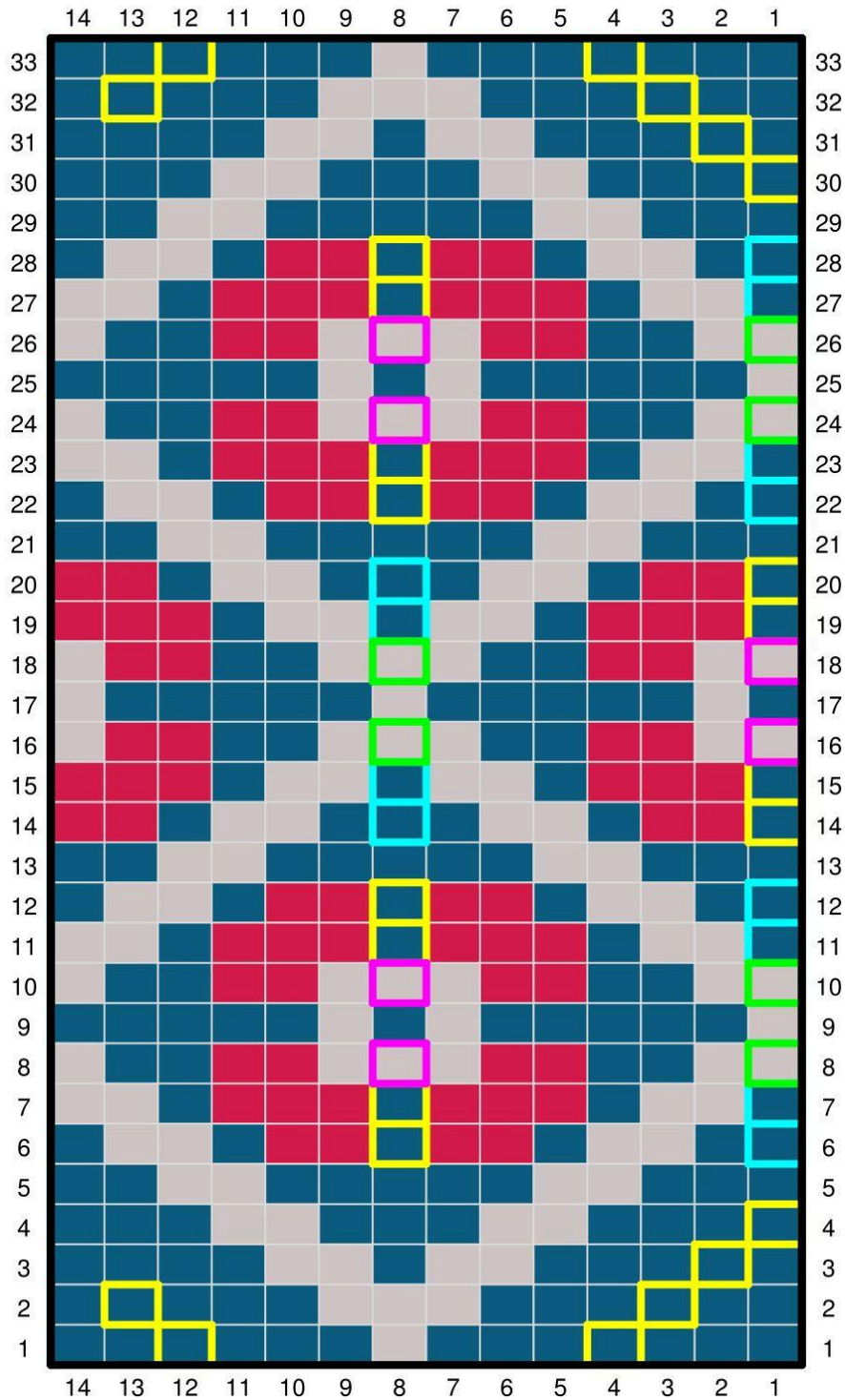
Break MC. Use yarn needle to draw tail through remaining stitches, pulling snugly to neatly close top of hat. Weave in ends on wrong side. Lightly block to desired finished dimensions.

Enjoy your new hat :)








cold comfort knits

CHART
NOTES

- It can be helpful to separate each 14-stitch pattern repeat with a stitch marker. Place markers as you work Round 1 and remove them as you work Round 33, leaving only the BORM.
- Join C1 at the beginning of Round 1. Break C1 at the end of Round 33.
- Join C2 at the beginning of Round 6. Break C2 at the end of Round 28.
- Each outlined box represents where/how to trap your floats (see legend).



Legend

	Knit with C1
	Knit with C2
	Knit with MC
	Trap MC with C1
	Trap C2 with MC
	Trap C1 with MC
	Trap C2 with C1