



KNITTING PATTERN

La Spiga

Hat

Design: Intreccidiceci | Hobbii Design



MATERIALS

Highland Wool

MC: 1 (2) skein(s) of color 29

CC: 2 (2) skeins of color 25

Circular needle 4 mm, 40 cm /US 6, 16"

Stitch marker

Tapestry needle

YARN QUALITY

 **Highland Wool**, Hobbii

100 % Peruvian Highland Wool

50 g / 1.8 oz = 175 m / 191 yds

GAUGE

20 sts x 26 rows = 10 cm x 10 cm / 4" x 4"

ABBREVIATIONS

BO: Bind off

CC: Coordinating color

CO: Cast on

Dec: decrease

K: Knit

K2tog: Knit two together (decrease)

MC: Main color

P: Purl

PM: Place marker

Rnd / Rnds: Round, rounds

RS: Right side

St / Sts: Stitch, stitches

WS: Wrong side

SIZE

S/M (L/XL)

MEASUREMENTS

Width: 22 (24) cm / 8.75" (9.5")

Length: 27 (27) cm / 10.75" (10.75")

PATTERN INFORMATION

This lovely hat is knit in two connected layers.

The outer layer is knit following a chart. The

inner layer is knit in stockinette stitch with 2

alternating colors.

Model wears size S/M.

The hat comes with a matching cowl.

HASHTAGS FOR SOCIAL MEDIA

#hobbiidesign #hobbiilaspiga #intreccidiceci

#hobbiinaturalbeauty #hobbiilaspigahat

BUY THE YARN HERE

<https://shop.hobbii.com/la-spiga-hat>



QUESTIONS

If you have any questions regarding this pattern, please feel free to email us at support@hobbii.com. Please make sure to include the pattern's name and number.

Happy Crafting!

Pattern



OUTER LAYER

The sample uses a Long Tail CO method. You will later pick up sts from the CO edge.

Using MC, CO 106 (120) sts. PM and join to work in the rnd, being careful not to twist sts.

Rnd1: (k1MC, k1CC) to end of rnd.

Repeat Rnd 1 for 21 more times or until work measures approximately 10cm / 4".

Only SIZE S/M: dec 1 sts (105 sts)

BEGIN COLORWORK

Now knit the chart in color MC and CC.

The chart is read from the bottom right corner to the top left corner.

The chart is repeated 7 (8) times on the round a total of 32 rounds.

Break CC and knit 1 rnd in MC

Rnd 56: (k3, k2tog) to end of rnd.

Rnds 57-60: k all sts.

Rnd 61: (k2, K2tog) to end of rnd.

Rnd 62: k all sts.

Rnd 63: (k1, k2tog) to end of rnd.

Rnd 64: k all sts.

Rnd 65: k2tog to end of rnd.

Rnd 66: k all sts.

Rnd 67: k2tog to end of rnd.

Rnd 68: k all sts.

Break yarn and pull it through the remaining sts.

INNER LAYER

Pick up along the CO edge of the Outer Layer. Begin picking up sts at the beginning of the rnd.

Rnd 1: Using CC and with RS facing, pick up and k107 (121) sts from the CO edge of the Outer Layer. PM and join to work in the rnd.

Rnd2: (k1MC, k1CC) to end of rnd.

Rnd3: (k1CC, k1MC) to end of rnd.

Repeat Rnds 2 – 3 another 10 times or until work measures approximately 10 cm / 4".

Break MC

With CC knit until work measures approximately 25 cm/9.75".

Weave in the CC tail of yarn from the beginning of the Inner Layer.

The Crown Shaping for the Inner Layer will close the fabric, so you need to weave in your ends now.

Rnd 56: (k3, k2tog) to end of rnd.

Rnds 57-60: k all sts.

Rnd 61: (k2, K2tog) to end of rnd.

Rnd 62: k all sts.

Rnd 63: (k1, k2tog) to end of rnd.

Rnd 64: k all sts.

Rnd 65: k2tog to end of rnd.

Rnd 66: k all sts.

Rnd 67: k2tog to end of rnd.

Rnd 68: k all sts.

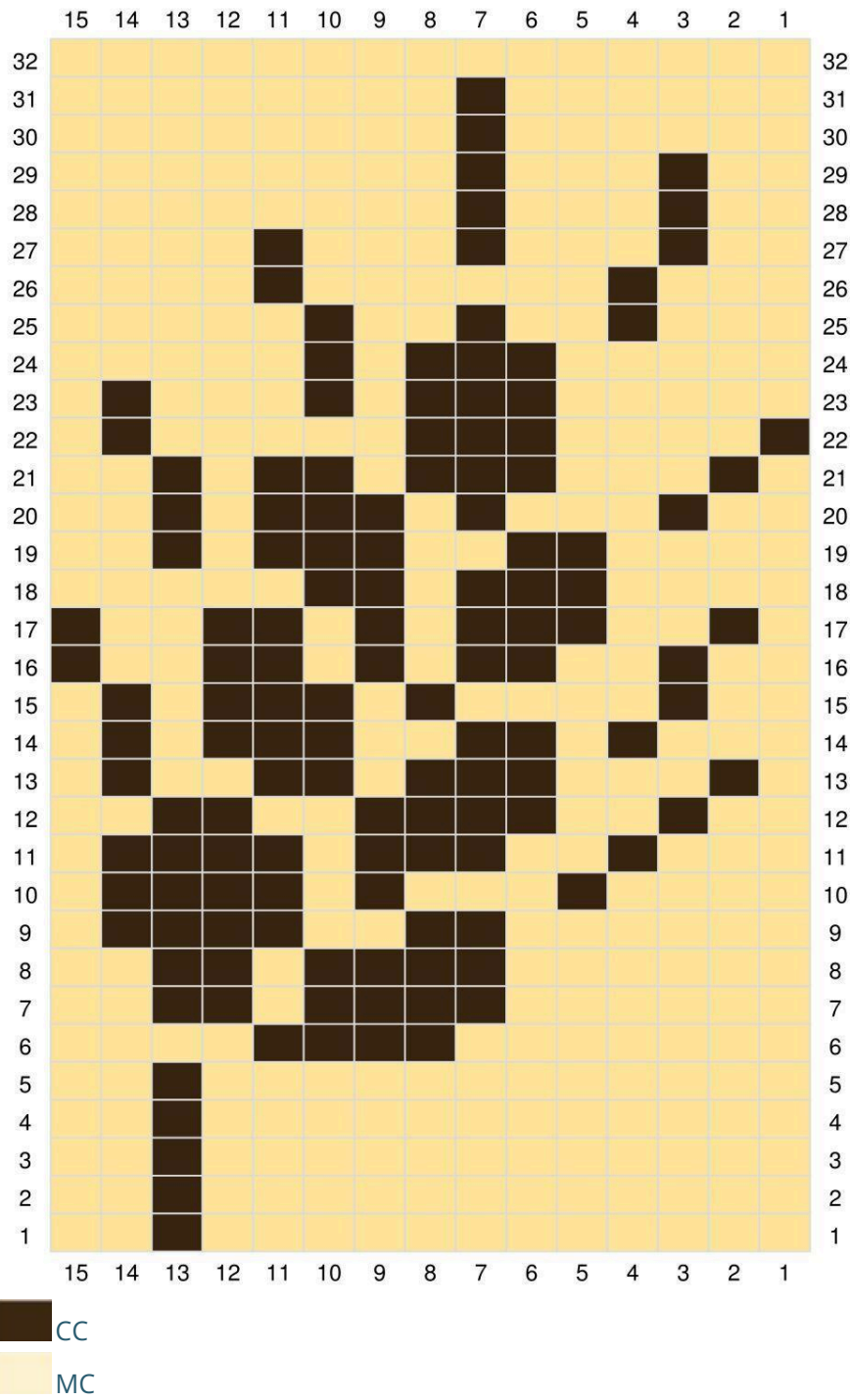
Break yarn and pull it through the remaining sts.

Finishing

Wet block the finished hat to smooth the fabric.

This hat is reversible so you can wear it however you like.

CHART



Enjoy!

@intreccidiceci

