

pompom x  hobbii



KNITTING PATTERN

Antanilla

Lace Cardigan

Design: Esti Juango | Garland, Autumn 2024

pompom x hobbii

MATERIALS

Hobbii x Pom Pom Garland

Shade: Muse, 7 (8, 8, 9, 10, 12, 13, 14, 16
17) balls

4mm / US 6 knitting needles **and** needles
suitable for working small circumferences
in the round

3.5 mm / US 4 knitting needles

4mm / US (G-6) crochet hook for the
bobbles

Always use a needle size that will result in
the correct gauge after blocking.

Stitch markers (4), locking stitch markers (4),
scrap yarn, cable needle, stitch holders, 15
mm buttons (4)

YARN QUALITY

 **Garland**, Hobbii x Pom Pom

Worsted weight

70% Cotton, 30% Alpaca

105m / 114yd per 50 g

GAUGE

18 sts & 26 rows = 10cm / 4" over lace pattern
on 4mm needles after blocking.

17 sts & 26 rows = 10cm / 4" over St st pattern
on 4mm needles after blocking.

SIZE

1 (2, 3, 4, 5, 6, 7, 8, 9, 10)

MEASUREMENTS

Finished chest (fullest point) circumference:
91.5 (100.5, 109.5, 118.5, 127, 136, 145, 154,
163, 171.5)cm / 36 (39½, 43, 46¾, 50, 53½,
57, 60¾, 64¼, 67½)" – to be worn with
10-15cm / 4-6" positive ease

Model has a 86.5cm / 34" chest
circumference and is wearing a size 3.

PATTERN INFORMATION

The cardigan begins at the back neck and
is then increased to the full width of the
back. Stitches are picked up along the
sloped shoulders for the fronts. The pieces
are joined at the underarm and the body is
knitted in one piece. The sleeve stitches are
then picked up from the body and worked
in the round. The buttonband is worked with
an i-cord cast-off. Bobbles can be worked in
knit or crochet.

HASHTAGS FOR SOCIAL MEDIA

#AntanillaCardigan

#PomPomxHobbiiGarland

#PomPomXHobbii

BUY THE YARN HERE

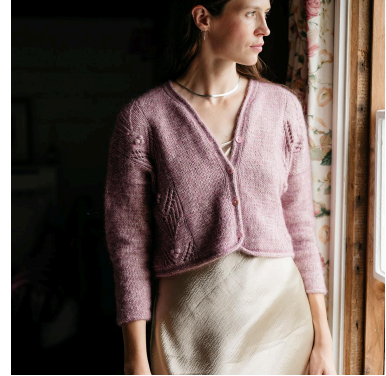
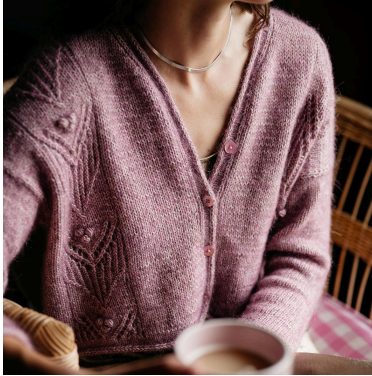
<https://shop.hobbii.com/antanilla-lace-cardigan>

QUESTIONS

If you have any questions regarding this pattern, please feel free to email us at
support@hobbii.com. Please make sure to include the pattern's name and number.

Happy Crafting!

Pattern



ABBREVIATIONS

approx	Approximately
beg	Beginning
ch	Chain (crochet)
dc	Double crochet
dec(s)	Decrease/s/d/ing
inc	Increase/s/d/ing
k	Knit
k2tog	Knit 2 stitches together
k3tog	Knit 3 stitches together
kfb	Knit into the front and back of 1 stitch
LH	Left-hand (e.g. LH needle)
M1L	Make 1 Left; pick up strand between the two needles from the front to back with the tip of left needle, knit into the back of this stitch
M1R	Make 1 Right; pick up strand between the two needles from back to front with the tip of left needle, knit into the front of this stitch
M1P	Make 1 purl stitch – work as for M1LP
M1LP	Make 1 Left Purlwise; pick up strand between the two needles from the front to back with the tip of left needle, purl into the back of this stitch
M1RP	Make 1 Right Purlwise; pick up strand between the two needles from back to front with the tip of left needle, purl into the front of this stitch
patt	Pattern
PM	Place Marker
PC	Popcorn
p	Purl
p2tog	Purl 2 stitches together
rep	Repeat
RH	Right-hand (e.g. RH needle)
RS	Right side

s2kpo	Slip 2 sts together as if to k2tog, k1, pass 2 slipped sts over
sl	Slip
SM	Slip Marker
ssk	Slip 2 stitches knitwise one at a time, knit them together through back loop
st(s)	Stitch(es)
St st	Stocking stitch / Stockinette
tbl	Through the back loop
WS	Wrong side
yo	Yarn over needle or hook and into working position

STITCH GLOSSARY

PC (Popcorn stitch)

Crochet Version: Slip next st to crochet hook, ch3, work 4dc into the base of the st, elongate last loop and remove it from the hook, insert hook from front to back in the top of the beg ch3, replace last loop, yarn over and draw through both loops. Slip st to LH needle and k1.

Knit Version: Knit into front, back, front, back, front of next stitch (5 sts). Turn, p5, turn, k5, turn, p5, turn, s2kpo, slip st to LH needle, pass 2nd and 3rd sts over first st, slip st back to RH needle.

1/2 LC Sl 1 to cable needle, hold at front, k2, k1 from cable needle.

1/1 LC (k1, k1tbl) Sl 1 to cable needle, hold at front, k1, k1tbl from cable needle.

1/1 RC (k1tbl, k1) Sl 1 to cable needle, hold at back, k1tbl, k1 from cable needle.

I-cord Cast Off

Cable cast on 3 sts at beg of row, *k2, k2tog tbl, slip 3 sts from RH needle to LH; rep from * to end, cast off 3 sts.

PATTERN

BACK

Using larger needles, cast on 21 sts for the back neck. Do not join in the round. Place locking markers into the cast on edge below the first and last stitch of the row.

Set-up row (WS): K2, p17, k2.

Row 1 (RS): Work Row 1 of Back Increase Chart. 2 sts inc, 23 sts

Row 2 (WS): Work Row 2 of Back Increase Chart. 2 sts inc, 25 sts

Working next row of Chart each time, continue through row 30 of Back Increase Chart. 56 sts inc, 81 sts

SIZE 1 ONLY

Place locking markers into the first and last stitch of the row.

Row 1 (RS): P1, k1, PM, work Row 1 of Back chart over next 77 sts, PM, k1, p1. 81 sts

Row 2 (WS): K1, p1, SM, work Row 2 of Back chart to marker, SM, p1, k1.

SIZES 2, 3, 4, 5, 6, 7, 8 & 9 ONLY

Row 1 (RS): P1, M1L, k1, PM, work row 1 of Back chart over next 77 sts, PM, k1, M1R, p1. 83 sts

Row 2 (WS): K1, M1RP, p2, SM, work row 2 of Back chart, SM, p2, M1LP, k1. 85 sts

Row 3 (RS): P1, M1L, k to marker, SM, work next row of Back chart to marker, SM, k to last st, M1R, p1. 2 sts inc

Row 4 (WS): K1, M1RP, p to marker, SM, work next row of Back chart, SM, p to last st, M1LP, k1. 2 sts inc

Rep rows 3-4 a further – (–, 2, 4, 6, 8, 10, 12, 14, 16) times. – (–, 8, 16, 24, 32, 40, 48, 56, 64) sts inc. – (–, 97, 105, 113, 121, 129, 137, 145, 153) sts

Place locking markers into the first and last stitch of the row. Back increases are complete.

All sizes again

Working next row of Chart each time, continue straight working Back Chart between markers until Back measures 11 (13, 13, 13, 13, 12, 11, 10, 9)cm / 4¼ (5, 5, 5, 5, 5, 4¾, 4¼, 4, 3½)" from the locking marker at the end of the increases, ending with a WS row. Make note of the last Chart row worked to match fronts.

Break yarn and place sts on hold.

RIGHT FRONT SHOULDER

With the RS facing and starting at the locking marker at the end of increases on the right shoulder, pick up and knit 32 (36, 40, 44, 48, 52, 56, 60, 64, 68) sts (1 st per each row) along the right shoulder line until the locking marker at the right corner of the back neck cast on.

Set-up Row (WS): P2, k1, p8, PM, k1, p17, k1, PM, p to last st, k1.

Row 1 (RS): P1, k to marker, SM, work Front Chart, SM, k to last 3 sts, p1, k2.

Row 2 (WS): P2, k1, p8, SM, work Front Chart, SM, p to last st, k1.

Rows 3-14: Working the next row of Front Chart each time, rep rows 1-2 a further 6 times.

Neck Shaping

Continue working from Front Chart as established.

Row 15 (RS): P1, k to marker, SM, work Front Chart, SM, k to last 3 sts, M1R, p1, k2. 1 st inc

Row 16 (WS): P2, k1, p to marker, SM, work Front Chart, SM, p to last st, k1.

Rows 17-26: Rep rows 15-16 a further 5 times. 38 (42, 46, 50, 54, 58, 62, 66, 70, 74) sts

Row 27 (RS): P1, k to marker, SM, work Front Chart, SM, k to last 3 sts, M1R, p1, k2. 1 st inc

Row 28 (WS): P2, k1, M1RP, p to marker, SM, work Front Chart, SM, p to last st, k1. 1 st inc

Rows 29-30: Rep rows 27-28 once more. 42 (46, 50, 54, 58, 62, 66, 70, 74, 78) sts

Neck increases complete.

Row 31 (RS): P1, k to marker, SM, work Front Chart, SM, k to last 3 sts, p1, k2.

Row 32 (WS): P2, k1, p to marker, SM, work Front Chart, SM, p to last st, k1.

Continuing to work Front Chart in patt, rep Rows 31-32 until Right Front measures 23.5 (26, 27.5, 29, 30.5, 32, 33, 33.5, 34, 34.5)cm / 9¼ (10¼, 10¾, 11½, 12, 12½, 13, 13¼, 13½, 13½)" from the shoulder where stitches were picked up, ending on a WS Row.
Break yarn and place sts on hold.

LEFT FRONT SHOULDER

With the RS facing and starting at the locking marker at the left corner of the back neck cast on, pick up and knit 32 (36, 40, 44, 48, 52, 56, 60, 64, 68) sts (1 st per each row) along the left shoulder line until the locking marker at the end of increases on the left shoulder.

Set-up Row (WS): K1, p1 (5, 9, 13, 17, 21, 25, 29, 33, 37), PM, k1, p17, k1, PM, p8, k1, p2.

The position of the Front Chart is centered with the position of the Back chart.

Row 1 (RS): K2, p1, k to marker, SM, work Front Chart, SM, k to last st, p1.

Row 2 (WS): K1, p to marker, SM, work Front Chart, SM, p to last 3 st, k1, p2.

Rows 3-14: Working the next row of Front Chart each time, rep rows 1-2 a further 6 times.

Neck Shaping

Continue working from Front Chart as established.

Row 15 (RS): K2, p1, M1L, k to marker, SM, work Front Chart, SM, k to last st, p1. *1 st inc*

Row 16 (WS): K1, p to marker, SM, work Front Chart, SM, p to last 3 st, k1, p2.

Rows 17-26: Rep rows 15-16 a further five times. 38 (42, 46, 50, 54, 58, 62, 66, 70, 74) sts

Row 27 (RS): K2, p1, M1L, k to marker, SM, work Front Chart, SM, k to last st, p1. *1 st inc*

Row 28 (WS): K1, p to marker, SM, work Front Chart, SM, p to last 3 st, M1LP, k1, p2. *1 st inc*

Rows 29-30: Rep rows 27-28 once more. 42 (46, 50, 54, 58, 62, 66, 70, 74, 78) sts

Neck increases complete.

Row 31 (RS): K2, p1, k to marker, SM, work Front Chart, SM, k to last st, p1.

Row 32 (WS): K1, p to marker, SM, work Front Chart, SM, p to last 3 st, k1, p2.

Continuing to work Front Chart in patt, rep Rows 31-32 until Left Front measures 23.5 (26, 27.5, 29, 30.5, 32, 33, 33.5, 34, 34.5)cm / 9¼ (10¼, 10¾, 11½, 12, 12½, 13, 13¼, 13½, 13½)" from the shoulder where stitches were picked up, ending with the same WS row of the chart as you did for the right front.

LOWER BODY

Join Fronts and Back

Next row (RS): Beg with Left Front, k2, p1, k to marker, SM, work next row of Front Chart, SM, work to end of Left Front, work in patt across Back resuming Back Chart, work in patt across Right Front resuming Front Chart to last 3 sts, p1, k2. 165 (181, 197, 213, 229, 245, 261, 277, 293, 309) sts

Note: Chart row may be different between the Front and the Back. Continue in patt as established.

Continue work in patt until work measures 20 (20, 20, 20, 25, 25, 25, 25, 30, 30)cm / 7¾ (7¾, 7¾, 7¾, 9¾, 9¾, 9¾, 9¾, 11¾, 11¾)" from underarm or desired length.

Break yarn and place sts on hold.

SLEEVES

Beg at underarm, pick up and knit 62 (66, 68, 70, 74, 82, 92, 98, 100, 108) sts along the sleeve opening (approx. 3 sts every 4 rows). PM to indicate beg of round.

Knit 2 (10, 4, 2, 7, 6, 15, 2, 26, 16) rounds.

Dec Round: K1, k2tog, k to last 3 sts, ssk, k1. 2 sts dec

Rep the Dec Round every 8 (6, 6, 6, 5, 4, 3, 3, 2, 2)th round a further 11 (13, 14, 14, 16, 20, 24, 27, 28, 32) times. 38 (38, 38, 40, 40, 40, 42, 42, 42, 42) sts

Work straight until Sleeve measures 39 (38, 38, 37, 37, 36, 36, 35, 34, 33)cm / 15¼ (15, 15, 14½, 14½, 14¼, 14¼, 13¾, 13½, 13)" or 1cm / ½" less than the desired length.

Cast off sts with i-cord method.

BUTTONBAND

Using your smaller needles and right side facing, begin picking up stitches at the right back. Pick up the 21 sts along the back cast on, pick up and knit 3 sts from 4 rows evenly along the left-front edge, place 165 (181, 197, 213, 229, 245, 261, 277, 293, 309) held Body sts on needle, pick up and knit 3 sts from 4 rows evenly along the right-front edge, ending at the right back. PM to indicate beg of round.

Note: The total stitch count varies depending on the body length.

Round 1: K to end.

Place 4 markers along Left Front to mark button placement, with bottom marker 2.5cm / 1" from hem and remaining markers evenly spaced along front.

Round 2: K to end, working yo, ssk at each marked button position.

Round 3: K to end.

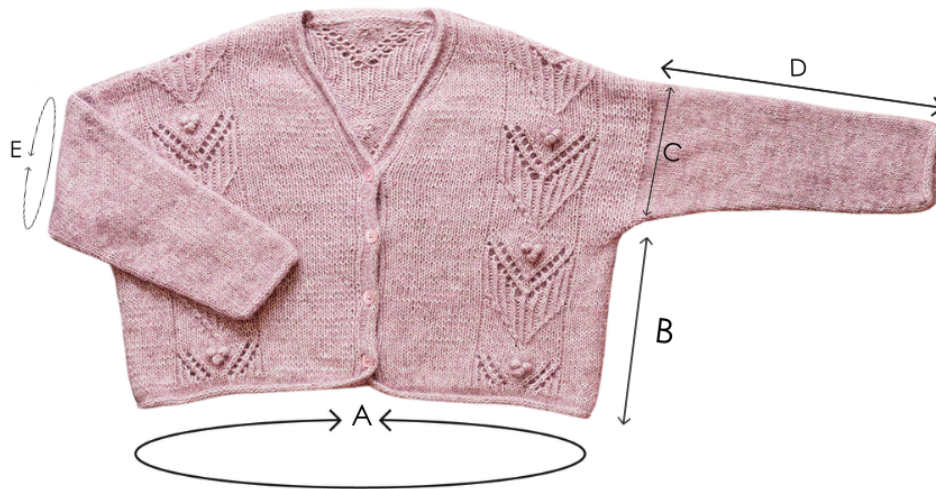
Cast off sts with i-cord method.

FINISHING

Weave in ends and block to measurements. Sew buttons opposite buttonholes.

Enjoy!

SCHEMATIC



A. Chest circumference: 91.5 (100.5, 109.5, 118.5, 127, 136, 145, 154, 163, 171.5)cm / 36 (39½, 43, 46¾, 50, 53½, 57, 60¾, 64¼, 67½)"

B. Length (underarm to hem): 20 (20, 20, 20, 25, 25, 25, 25, 30, 30)cm / 7¾ (7¾, 7¾, 7¾, 9¾, 9¾, 9¾, 11¾, 11¾)"

C. Armhole depth: 23.5 (26, 27.5, 29, 30.5, 32, 33, 33.5, 34, 34.5)cm / 9¼ (10¼, 10¾, 11½, 12, 12½, 13, 13¼, 13½, 13½)"

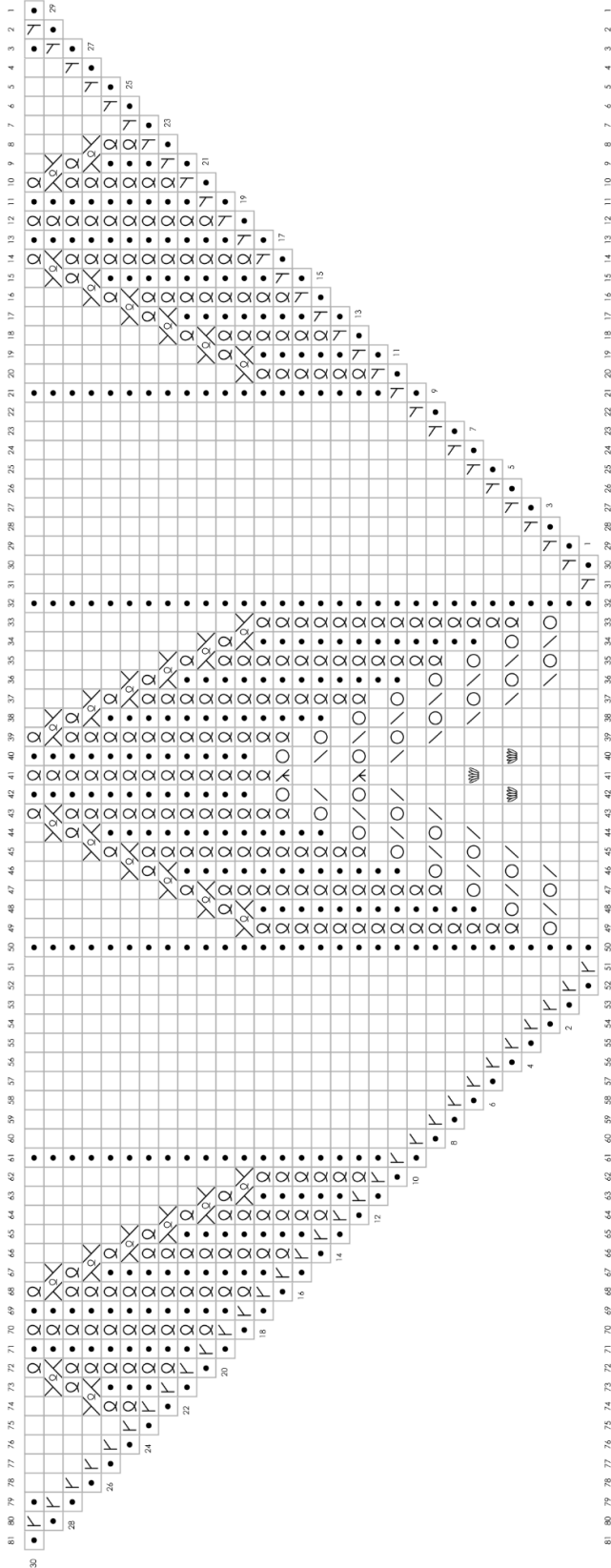
D. Sleeve length: 40 (39, 39, 38, 38, 37, 37, 36, 35, 34)cm / 15¾ (15½, 15½, 15, 15, 14½, 14¼, 13¾, 13½, 13)"

E. Upper arm circumference: 36.5 (39, 40, 41, 43.5, 48, 54, 57.5, 59, 63.5)cm / 14¼ (15¼, 15¾, 16¼, 17¼, 19, 21¼, 22¾, 23¼, 25)"

Esti Juango (she/her) is a knitwear designer based in Pamplona in the north of Spain. She loves designing lace patterns which bring you to the present moment while knitting them.
www.ileradebu.com / [@ileradebu](https://www.instagram.com/ileradebu)

Chart A

Back Increase Chart



pompom x hobbii











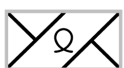


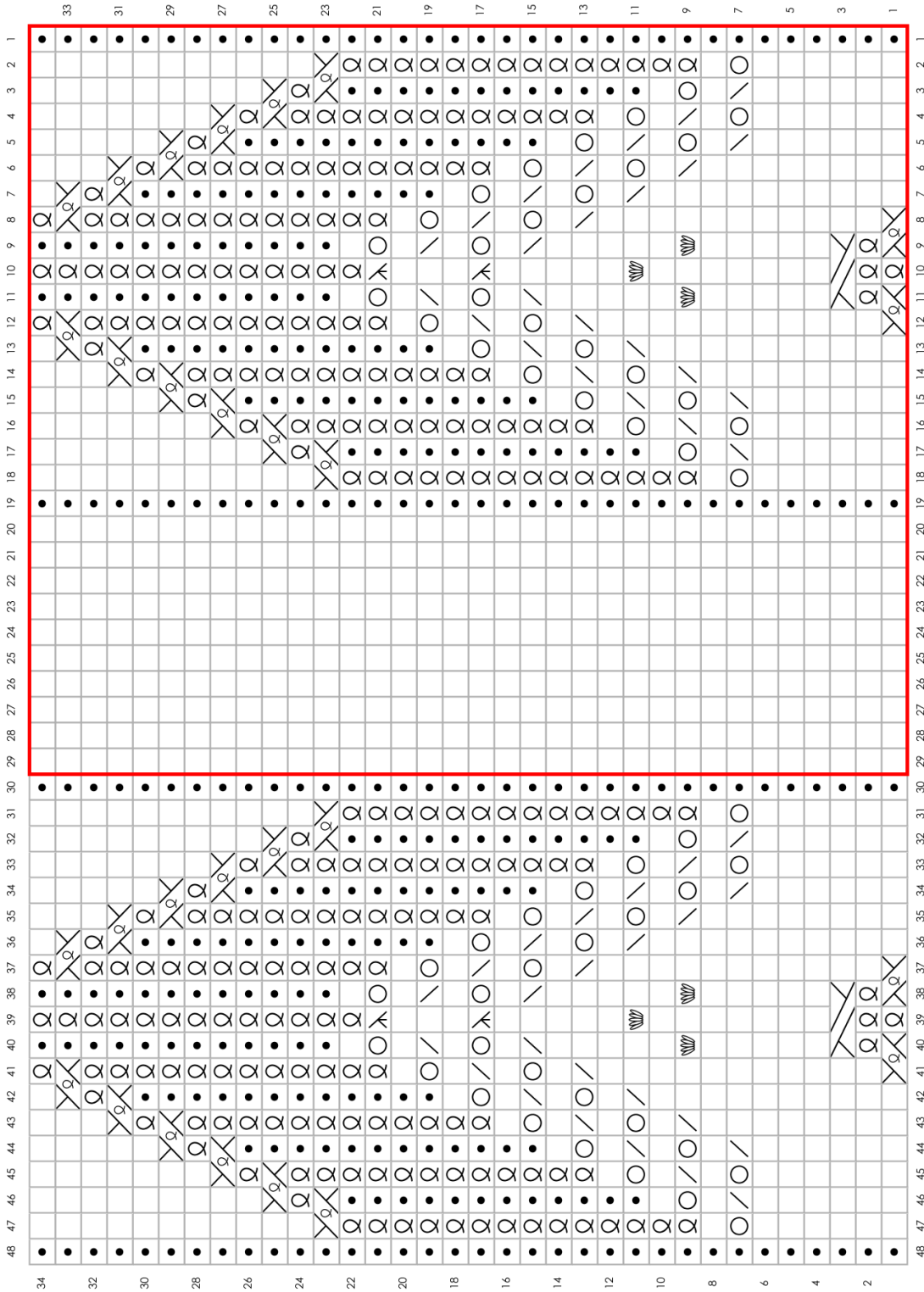
-  RS: knit
WS: purl
-  RS: purl
WS: knit
-  RS: k1tbl
WS: p1tbl
-  Yo
-  RS: k2tog
WS: p2tog
-  RS: SSK
WS: SSP
-  RS: m1 right leaning
WS: m1 purlwise right leaning
-  RS: m1 left leaning
WS: m1 purlwise right leaning
-  RS: k3togtbl
-  PC (popcorn stitch)
-  1/1 RC (k1tbl, k1)
-  1/1 LC (k1, k1tbl)
-  1/2 LC

Chart B

Back Chart

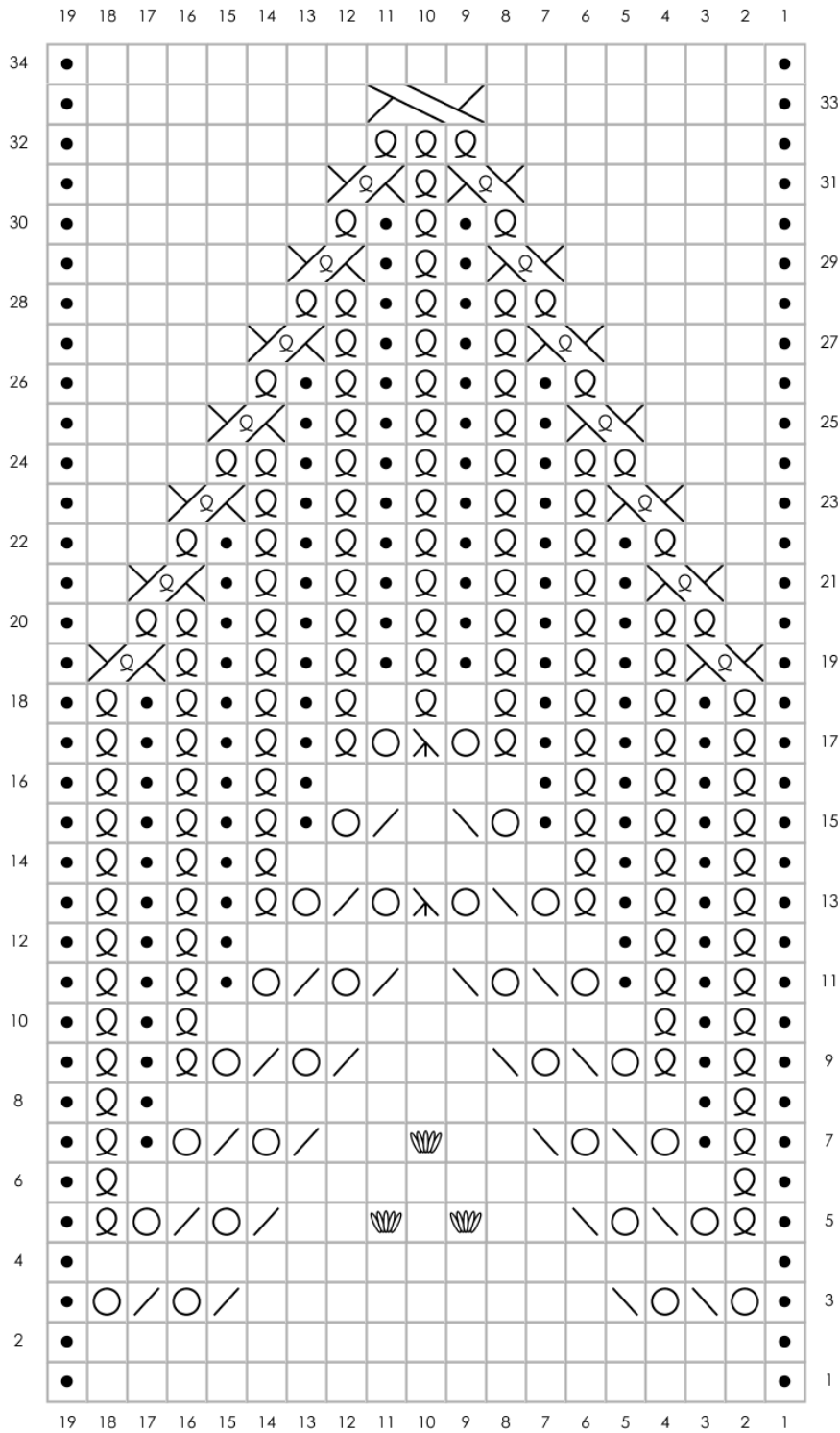


pompom x hobbii

-  RS: knit
WS: purl
-  RS: purl
WS: knit
-  RS: k1tbl
WS: p1tbl
-  Yo
-  RS: k2tog
WS: p2tog
-  RS: ssk
WS: ssp
-  RS: k3togtbl
-  Popcorn stitch
-  1/1 RC (ktbl, k1)
-  1/1 LC (k1, ktbl)
-  1/2 LC
-  Work twice

Chart C

Front Chart



WRITTEN INSTRUCTIONS FOR CHARTS

CHART A – Back Increases

Row 1 (RS): P1, M1L, p1, k17, p1, M1R, p1. 23 sts

Row 2 (WS): K1, M1RP, p1, k1, p17, k1, p1, M1LP, k1. 25 sts

Row 3: P1, M1L, k2, p1, [yo, ssk] twice, k9, [k2tog, yo] twice, p1, k2, M1R, p1. 27 sts

Row 4: K1, M1RP, p3, k1, p17, k1, p3, M1LP, k1. 29 sts

Row 5: P1, M1L, k4, p1, k1tbl, [yo, ssk] twice, k2, PC, k1, PC, k2, [k2tog, yo] twice, k1tbl, p1, k4, M1R, p1. 31 sts

Row 6: K1, M1RP, p5, k1, p1tbl, p15, p1tbl, k1, p5, M1LP, k1. 33 sts

Row 7: P1, M1L, k6, p1, k1tbl, p1, [yo, ssk] twice, k2, PC, k2, [k2tog, yo] twice, p1, k1tbl, p1, k6, M1R, p1. 35 sts

Row 8: K1, M1RP, p7, k1, p1tbl, k1, p13, k1, p1tbl, k1, p7, M1LP, k1. 37 sts

Row 9: P1, M1L, k8, [p1, k1tbl] twice, [yo, ssk] twice, k3, [k2tog, yo] twice, [k1tbl, p1] twice, k8, M1R, p1. 39 sts

Row 10: K1, M1RP, p9, [k1, p1tbl] twice, p11, [p1tbl, k1] twice, p9, M1LP, k1. 41 sts

Row 11: P1, M1L, k10, [p1, k1tbl] twice, p1, [yo, ssk] twice, k1, [k2tog, yo] twice, [p1, k1tbl] twice, p1, k10, M1R, p1. 43 sts

Row 12: K1, M1RP, k1, p10, [k1, p1tbl] twice, k1, p9, [k1, p1tbl] twice, k1, p10, k1, M1LP, k1. 45 sts

Row 13: P1, M1L, k1tbl, p1, k10, [p1, k1tbl] 3 times, yo, ssk, yo, k3togtbl, yo, k2tog, yo, [k1tbl, p1] 3 times, k10, p1, k1tbl, M1R, p1. 47 sts

Row 14: K1, M1RP, k1, p1tbl, k1, p10, [k1, p1tbl] 3 times, p7, [p1tbl, k1] 3 times, p10, k1, p1tbl, k1, M1LP, k1. 49 sts

Row 15: P1, M1L, [k1tbl, p1] twice, k10, [p1, k1tbl] 3 times, p1, yo, ssk, k1, k2tog, yo, [p1, k1tbl] 3 times, p1, k10, [p1, k1tbl] twice, M1R, p1. 51 sts

Row 16: K1, M1RP, [k1, p1tbl] twice, k1, p10, [k1, p1tbl] 3 times, k1, p5, [k1, p1tbl] 3 times, k1, p10, [k1, p1tbl] twice, k1, M1LP, k1. 53 sts

Row 17: P1, M1L, [k1tbl, p1] 3 times, k10, [p1, k1tbl] 4 times, yo, k3togtbl, yo, [k1tbl, p1] 4 times, k10, [p1, k1tbl] 3 times, M1R, p1. 55 sts

Row 18: K1, M1RP, [k1, p1tbl] 3 times, k1, p10, [k1, p1tbl] 4 times, [p1, p1tbl] twice, [k1, p1tbl] 3 times, k1, p10, [k1, p1tbl] 3 times, k1, M1LP, k1. 57 sts

Row 19: P1, M1L, [k1tbl, p1] twice, k1tbl, 1/1 RC (k1tbl, k1), p1, k10, p1, 1/1 LC (k1, k1tbl), [k1tbl, p1] 6 times, k1tbl, 1/1 RC (k1tbl, k1), p1, k10, p1, 1/1 LC (k1, k1tbl), [k1tbl, p1] twice, k1tbl, M1R, p1. 59 sts

Row 20: K1, M1RP, [k1, p1tbl] twice, k1, p2tbl, p1, k1, p10, k1, p1, p2tbl, [k1, p1tbl] 5 times, k1, p2tbl, p1, k1, p10, k1, p1, p2tbl, [k1, p1tbl] twice, k1, M1LP, k1. 61 sts

Row 21: P1, M1L, [k1tbl, p1] 3 times, 1/1 RC (k1tbl, k1), k1, p1, k10, p1, k1, 1/1 LC (k1, k1tbl), [p1, k1tbl] 5 times, p1, 1/1 RC (k1tbl, k1), k1, p1, k10, p1, k1, 1/1 LC (k1, k1tbl), [p1, k1tbl] 3 times, M1R, p1. 63 sts

Row 22: K1, M1RP, [k1, p1tbl] 4 times, p2, k1, p10, k1, p2, [p1tbl, k1] 6 times, p1tbl, p2, k1, p10, k1, p2, [p1tbl, k1] 4 times, M1LP, k1. 65 sts

Row 23: P1, M1L, [k1tbl, p1] 3 times, k1tbl, 1/1 RC (k1tbl, k1), k2, p1, k10, p1, k2, 1/1 LC (k1, k1tbl), [k1tbl, p1] 4 times, k1tbl, 1/1 RC (k1tbl, k1), k2, p1, k10, p1, k2, 1/1 LC (k1, k1tbl), [k1tbl, p1] 3 times, k1tbl, M1R, p1. 67 sts

Row 24: K1, M1RP, [k1, p1tbl] 3 times, k2, p1tbl, p3, k1, p10, k1, p3, p2tbl, [k1, p1tbl] 3 times, k1, p2tbl, p3, k1, p10, k1, p3, p1tbl, k2, [p1tbl, k1] 3 times, M1LP, k1. 69 sts

Row 25: P1, M1L, [k1tbl, p1] 4 times, [1/1 RC (k1tbl, k1), k3, p1, k10, p1, k3, 1/1 LC (k1, k1tbl), (p1, k1tbl) 3 times, p1] twice, k1tbl, M1R, p1. 71 sts

Row 26: K1, M1RP, p1, [p1tbl, k1] 4 times, [p1tbl, p4, k1, p10, k1, p4, (p1tbl, k1) 4 times] twice, p1tbl, p1, M1LP, k1. 73 sts

Row 27: P1, M1L, k2, [(1/1 LC (k1, k1tbl), k1tbl, (p1, k1tbl) twice, 1/1 RC (k1tbl, k1), k4, p1, k10, p1, k4] twice, 1/1 LC (k1, k1tbl), [k1tbl, p1] twice, k1tbl, 1/1 RC (k1tbl, k1), k2, M1R, p1. 75 sts

Row 28: K1, M1RP, p4, [p2tbl, k1, p1tbl, k1, p2tbl, p5, k1, p10, k1, p5] twice, p2tbl, k1, p1tbl, k1, p2tbl, p4, M1LP, k1. 77 sts

Row 29: P1, M1L, [k5, 1/1 LC (k1, k1tbl), p1, k1tbl, p1, 1/1 RC (k1tbl, k1), k5, p1, k10, p1] twice, k5, 1/1 LC (k1, k1tbl), p1, k1tbl, p1, 1/1 RC (k1tbl, k1), k5, M1R, p1. 79 sts

Row 30: K1, M1RP, [k1, p6, (p1tbl, k1) twice, p1tbl, p6, k1, p10] twice, k1, p6, [p1tbl, k1] twice, p1tbl, p6, k1, M1LP, k1. 81 sts

CHART B – Back

Row 1 (RS): [P1, k6, 1/1 LC (k1, k1tbl), k1tbl, 1/1 RC (k1tbl, k1), k6, p1, k10] twice, p1, k6, 1/1 LC (k1, k1tbl), k1tbl, 1/1 RC (k1tbl, k1), k6, p1.

Row 2 (WS): [K1, p7, p3tbl, p7, k1, p10] twice, k1, p7, p3tbl, p7, k1.

Row 3: [P1, k7, 1/2 LC, k7, p1, k10] twice, p1, k7, 1/2 LC, k7, p1.

Row 4: [K1, p17, k1, p10] twice, k1, p17, k1.

Row 5: [P1, k17, p1, k10] twice, p1, k17, p1.

Row 6: Rep row 4.

Row 7: [P1, (yo, ssk) twice, k9, (k2tog, yo) twice, p1, k10] twice, p1, [yo, ssk] twice, k9, [k2tog, yo] twice, p1.

Row 8: Rep row 4.

Row 9: [P1, k1tbl, (yo, ssk) twice, k2, PC, k1, PC, k2, (k2tog, yo) twice, k1tbl, p1, k10] twice, p1, k1tbl, [yo, ssk] twice, k2, PC, k1, PC, k2, [k2tog, yo] twice, k1tbl, p1.

Row 10: [K1, p1tbl, p15, p1tbl, k1, p10] twice, k1, p1tbl, p15, p1tbl, k1.

Row 11: [P1, k1tbl, p1, (yo, ssk) twice, k2, PC, k2, (k2tog, yo) twice, p1, k1tbl, p1, k10] twice, p1, k1tbl, p1, [yo, ssk] twice, k2, PC, k2, [k2tog, yo] twice, p1, k1tbl, p1.

Row 12: [K1, p1tbl, k1, p13, k1, p1tbl, k1, p10] twice, k1, p1tbl, k1, p13, k1, p1tbl, k1.

Row 13: [P1, k1tbl] twice, [yo, ssk] twice, [k3, (k2tog, yo) twice, (k1tbl, p1) twice, k10, (p1, k1tbl) twice, (yo, ssk) twice] twice, k3, [k2tog, yo] twice, [k1tbl, p1] twice.

Row 14: [K1, p1tbl] twice, [p11, (p1tbl, k1) twice, p10, (k1, p1tbl) twice] twice, p11, [p1tbl, k1] twice.

pompom x hobbii

Row 15: [P1, k1tbl] twice, [p1, (yo, ssk) twice, k1, (k2tog, yo) twice, p1, (k1tbl, p1) twice, k10, (p1, k1tbl) twice,] twice, p1, [yo, ssk] twice, k1, [k2tog, yo] twice, [p1, k1tbl] twice, p1.

Row 16: [K1, p1tbl] twice, [k1, p9, (k1, p1tbl) twice, k1, p10, (k1, p1tbl) twice] twice, k1, p9, [k1, p1tbl] twice, k1.

Row 17: [P1, k1tbl] 3 times, [yo, ssk, yo, (k3togtbl), yo, k2tog, yo, k1tbl, p1, k1tbl, p1, k1tbl, p1, k10, p1, k1tbl, p1, k1tbl, p1, k1tbl] twice, yo, ssk, yo, (k3togtbl), yo, k2tog, yo, [k1tbl, p1] 3 times.

Row 18: [K1, p1tbl] 3 times, [p7, (p1tbl, k1) twice, p1tbl, k1, p10, (k1, p1tbl) 3 times] twice, p7, [p1tbl, k1] 3 times.

Row 19: [P1, k1tbl] 3 times, [p1, yo, ssk, k1, k2tog, yo, (p1, k1tbl) 3 times, p1, k10, (p1, k1tbl) 3 times,] twice, p1, yo, ssk, k1, k2tog, yo, [p1, k1tbl] 3 times, p1.

Row 20: [K1, p1tbl] 3 times, [k1, p5, (k1, p1tbl) 3 times, k1, p10, (k1, p1tbl) 3 times] twice, k1, p5, [k1, p1tbl] 3 times, k1.

Row 21: [P1, k1tbl] 4 times, [yo, k3togtbl, yo, (k1tbl, p1) 4 times, k10, (p1, k1tbl) 4 times,] twice, yo, k3togtbl, yo, [k1tbl, p1] 4 times.

Row 22: [K1, p1tbl] 4 times, [p1, p1tbl] twice, [k1, p1tbl] 3 times, [k1, p10, (k1, p1tbl) 4 times, (p1, p1tbl) twice, (k1, p1tbl) 3 times] twice, k1.

Row 23: [P1, 1/1 LC (k1, k1tbl), (k1tbl, p1) 6 times, k1tbl, 1/1 RC (k1tbl, k1), p1, k10] twice, p1, 1/1 LC (k1, k1tbl), [k1tbl, p1] 6 times, k1tbl, 1/1 RC (k1tbl, k1), p1.

Row 24: [K1, p1, p2tbl, (k1, p1tbl) 5 times, k1, p2tbl, p1, k1, p10] twice, k1, p1, p2tbl, [k1, p1tbl] 5 times, k1, p2tbl, p1, k1.

Row 25: [P1, k1, 1/1 LC (k1, k1tbl), (p1, k1tbl) 5 times, p1, 1/1 RC (k1tbl, k1), k1, p1, k10] twice, p1, k1, 1/1 LC (k1, k1tbl), [p1, k1tbl] 5 times, p1, 1/1 RC (k1tbl, k1), k1, p1.

Row 26: [K1, p2, (p1tbl, k1) 6 times, p1tbl, p2, k1, p10] twice, k1, p2, [p1tbl, k1] 6 times, p1tbl, p2, k1.

Row 27: [P1, k2, 1/1 LC (k1, k1tbl), (k1tbl, p1) 4 times, k1tbl, 1/1 RC (k1tbl, k1), k2, p1, k10] twice, p1, k2, 1/1 LC (k1, k1tbl), [k1tbl, p1] 4 times, k1tbl, 1/1 RC (k1tbl, k1), k2, p1.

Row 28: [K1, p3, p2tbl, (k1, p1tbl) 3 times, k1, p2tbl, p3, k1, p10] twice, k1, p3, p2tbl, [k1, p1tbl] 3 times, k1, p2tbl, p3, k1.

Row 29: [P1, k3, 1/1 LC (k1, k1tbl), (p1, k1tbl) 3 times, p1, 1/1 RC (k1tbl, k1), k3, p1, k10] twice, p1, k3, 1/1 LC (k1, k1tbl), [p1, k1tbl] 3 times, p1, 1/1 RC (k1tbl, k1), k3, p1.

Row 30: [K1, p4, (p1tbl, k1) 4 times, p1tbl, p4, k1, p10] twice, k1, p4, [p1tbl, k1] 4 times, p1tbl, p4, k1.

Row 31: [P1, k4, 1/1 LC (k1, k1tbl), (k1tbl, p1) twice, k1tbl, 1/1 RC (k1tbl, k1), k4, p1, k10] twice, p1, k4, 1/1 LC (k1, k1tbl), [k1tbl, p1] twice, k1tbl, 1/1 RC (k1tbl, k1), k4, p1.

Row 32: [K1, p5, p2tbl, k1, p1tbl, k1, p2tbl, p5, k1, p10] twice, k1, p5, p2tbl, k1, p1tbl, k1, p2tbl, p5, k1.

Row 33: [P1, k5, 1/1 LC (k1, k1tbl), p1, k1tbl, p1, 1/1 RC (k1tbl, k1), k5, p1, k10] twice, p1, k5, 1/1 LC (k1, k1tbl), p1, k1tbl, p1, 1/1 RC (k1tbl, k1), k5, p1.

Row 34: [K1, p6, (p1tbl, k1) twice, p1tbl, p6, k1, p10] twice, k1, p6, [p1tbl, k1] twice, p1tbl, p6, k1.

CHART C - Front

Row 1 (RS): P1, k17, p1.

Row 2 (WS): K1, p17, k1.

Row 3: P1, [yo, ssk] twice, k9, [k2tog, yo] twice, p1.

Row 4: K1, p17, k1.

Row 5: P1, k1tbl, [yo, ssk] twice, k2, PC, k1, PC, k2, [k2tog, yo] twice, k1tbl, p1.

Row 6: K1, p1tbl, p15, p1tbl, k1.

Row 7: P1, k1tbl, p1, [yo, ssk] twice, k2, PC, k2, [k2tog, yo] twice, p1, k1tbl, p1.

Row 8: K1, p1tbl, k1, p13, k1, p1tbl, k1.

Row 9: [P1, k1tbl] twice, [yo, ssk] twice, k3, [k2tog, yo] twice, [k1tbl, p1] twice.

Row 10: [K1, p1tbl] twice, p11, [p1tbl, k1] twice.

Row 11: [P1, k1tbl] twice, p1, [yo, ssk] twice, k1, [k2tog, yo] twice, [p1, k1tbl] twice, p1.

Row 12: [K1, p1tbl] twice, k1, p9, [k1, p1tbl] twice, k1.

Row 13: [P1, k1tbl] 3 times, yo, ssk, yo, k3togtbl, yo, k2tog, yo, [k1tbl, p1] 3 times.

Row 14: [K1, p1tbl] 3 times, p7, [p1tbl, k1] 3 times.

Row 15: [P1, k1tbl] 3 times, p1, yo, ssk, k1, k2tog, yo, [p1, k1tbl] 3 times, p1.

Row 16: [K1, p1tbl] 3 times, k1, p5, [k1, p1tbl] 3 times, k1.

Row 17: [P1, k1tbl] 4 times, yo, (k3togtbl), yo, [k1tbl, p1] 4 times.

Row 18: [K1, p1tbl] 4 times, [p1, p1tbl] twice, [k1, p1tbl] 3 times, k1.

Row 19: P1, 1/1 LC (k1, k1tbl), [k1tbl, p1] 6 times, k1tbl, 1/1 RC (k1tbl, k1), p1.

Row 20: K1, p1, p2tbl, [k1, p1tbl] 5 times, k1, p2tbl, p1, k1.

Row 21: P1, k1, 1/1 LC (k1, k1tbl), [p1, k1tbl] 5 times, p1, 1/1 RC (k1tbl, k1), k1, p1.

Row 22: K1, p2, [p1tbl, k1] 6 times, p1tbl, p2, k1.

Row 23: P1, k2, 1/1 LC (k1, k1tbl), [k1tbl, p1] 4 times, k1tbl, 1/1 RC (k1tbl, k1), k2, p1.

Row 24: K1, p3, p2tbl, [k1, p1tbl] 3 times, k1, p2tbl, p3, k1.

Row 25: P1, k3, 1/1 LC (k1, k1tbl), [p1, k1tbl] 3 times, p1, 1/1 RC (k1tbl, k1), k3, p1.

Row 26: K1, p4, [p1tbl, k1] 4 times, p1tbl, p4, k1.

Row 27: P1, k4, 1/1 LC (k1, k1tbl), [k1tbl, p1] twice, k1tbl, 1/1 RC (k1tbl, k1), k4, p1.

Row 28: K1, p5, p2tbl, k1, p1tbl, k1, p2tbl, p5, k1.

Row 29: P1, k5, 1/1 LC (k1, k1tbl), p1, k1tbl, p1, 1/1 RC (k1tbl, k1), k5, p1.

Row 30: K1, p6, [p1tbl, k1] twice, p1tbl, p6, k1.

Row 31: P1, k6, 1/1 LC (k1, k1tbl), k1tbl, 1/1 RC (k1tbl, k1), k6, p1.

Row 32: K1, p7, p3tbl, p7, k1.

Row 33: P1, k7, 1/2 LC, k7, p1.

Row 34: K1, p17, k1.