

pompom x  hobbii



KNITTING PATTERN

# Muse Shawl

Textured Triangular Wrap

**Design: Agata Mackiewicz** | Garland, Autumn 2024

# pompom x hobbii

## MATERIALS

**Hobbii x Pom Pom** Garland

**Shade:** Muse, 7 balls

4mm / US 6 circular needle, 100cm / 40" length

Always use a needle size that will result in the correct gauge after blocking.

4 stitch markers, cable needle, tapestry needle

## YARN QUALITY

 **Garland**, Hobbii x Pom Pom

Worsted weight

70% Cotton, 30% Alpaca

105m / 114yd per 50 g

## GAUGE

22 sts & 36 rows = 10cm / 4" in charted pattern (red box in Chart C), after blocking

## SIZE

One size

## MEASUREMENTS

68cm / 27" deep x 150cm / 59" wide at top edge

## PATTERN INFORMATION

Muse is a triangular shawl, worked from the top down with increases worked every right side row. Shawl begins with a garter tab, and features columns of wishbone cables and nups with garter stitch along the top edges. The bottom edge is worked in twisted ribbing.

## HASHTAGS FOR SOCIAL MEDIA

#MuseShawl #PomPomxHobbiiGarland

#PomPomXHobbii

## BUY THE YARN HERE

<https://shop.hobbii.com/muse-shawl-textured-triangular-wrap>

## QUESTIONS

If you have any questions regarding this pattern, please feel free to email us at [support@hobbii.com](mailto:support@hobbii.com). Please make sure to include the pattern's name and number.

Happy Crafting!

## Pattern



### ABBREVIATIONS

<b>Inc</b>	increase
<b>K</b>	knit
<b>M1L</b>	make 1 left knit
<b>M1LP</b>	Make 1 left purl
<b>M1R</b>	Make 1 right knit
<b>M1RP</b>	Make 1 right purl
<b>P</b>	purl
<b>Patt</b>	pattern
<b>PM</b>	Place marker
<b>Rep</b>	repeat
<b>RS</b>	right side
<b>SM</b>	Slip marker
<b>tbl</b>	Knit through the back loop
<b>WS</b>	wrong side
<b>Yo</b>	yarn over

### STITCH GLOSSARY

**1/3 LC:** Sl1 to cable needle, hold at front, k3, k1 from cable needle.

**1/3 RC:** Sl3 to cable needle, hold in back, k1, k3 from cable needle.

**5-st nupp:** [(K1, yo) twice, k1] into next st, insert RH needle into the back loop of these 5 sts and k5tog tbl.

**7-st nupp:** [(K1, yo) 3 times, k1] into next st, insert RH needle into the back loop of these 7 sts and k7tog tbl.

## PATTERN

### **Garter Tab**

CO 3 sts. Knit 6 rows.

**Row 1 (RS)(inc):** K3, rotate work to the right, [PM, pick up and knit 1 st from garter ridge] 3 times, PM, rotate work, pick up and knit 3 sts from cast-on. 9 sts

**Row 2 (WS):** K3, [SM, p1] 3 times, SM, k3.

### **Section A**

**Row 1 (RS)(inc):** K3, SM, work Chart A to marker, SM, k1, SM, work Chart A to marker, SM, k3. 4 sts inc

**Row 2 (WS):** K3, SM, work next row of Chart A to marker, SM, k1, SM, work next row of Chart A to marker, SM, k3.

Working next row of chart each time, continue through row 36 of Chart A. 81 sts

### **Section B**

**Row 1 (RS)(inc):** K3, SM, work Chart B to marker, SM, k1, SM, work Chart B to marker, SM, k3. 4 sts inc

**Row 2 (WS):** K3, SM, work next row of Chart B, SM, k1, SM, work next row of Chart B, SM, k3.

Working next row of chart each time, continue through row 28 of Chart B. 137 sts

### **Section C**

**Row 1 (RS)(inc):** K3, SM, work Chart C to marker working patt rep 5 times, SM, k1, SM, work Chart C to marker working patt rep 5 times, SM, k3. 4 sts inc

**Row 2 (WS):** K3, SM, work next row of Chart C to marker, SM, k1, SM, work next row of Chart C to marker, SM, k3.

Working next row of chart each time, continue through row 24 of Chart C. 185 sts

Rep rows 1-24 of Chart C, working patt rep 7 times on each half of the shawl. 233 sts

Rep rows 1-24 of Chart C, working patt rep 9 times on each half of the shawl. 281 sts

Rep rows 1-24 of Chart C, working patt rep 11 times on each half of the shawl. 329 sts

### **Section D**

**Row 1 (RS)(inc):** K3, SM, work Chart D to marker working patt rep 6 times, SM, k1, SM, work Chart D to marker working patt rep 6 times, SM, k3. 4 sts inc

**Row 2 (WS):** K3, SM, work Chart D to marker, SM, k1, SM, work Chart D to marker, SM, k3.

Working next row of chart each time, continue through row 24 of Chart D. 377 sts

## Section E

**Row 1 (RS)(inc):** K3, SM, work Chart E to marker working patt rep 15 times, SM, k1, SM, work Chart E to marker working patt rep 15 times, SM, k3. 4 sts inc

**Row 2 (WS):** K3, SM, work Chart E to marker, SM, k1, SM, work Chart E to marker, SM, k3.

Working next row of chart each time, continue through row 12 of Chart E. 401 sts

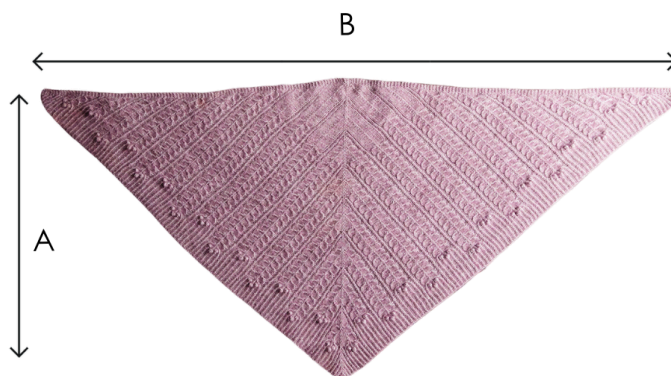
Cast off all stitches in pattern.

## FINISHING

Weave in ends and block to measurements.

Enjoy!

## SCHEMATIC



**A:** 68cm / 27"

**B:** 150cm / 59"

**Agata Mackiewicz "Amanita"** (she/her) is a knitwear designer based in Warsaw, Poland. She is a nature and vintage music lover. She loves trying new techniques and tries to make her designs simple but with eye-catching elements. Wool and mohair yarns are her favourites to work with as well as all autumnal and earthy colours. @amanitaknits

## Key



RS: knit  
WS: purl



RS: purl  
WS: knit



RS: slip purlwise with yarn in back  
WS: slip purlwise with yarn in front



RS: k1tbl  
WS: p1tbl



RS: m1 left leaning  
WS: m1 purlwise left leaning



RS: m1 purlwise left leaning  
WS: m1 left leaning



RS: m1 right leaning  
WS: m1 purlwise right leaning



RS: m1 purlwise right leaning  
WS: m1 right leaning



5-st nupp



7-st nupp



1/3 RC

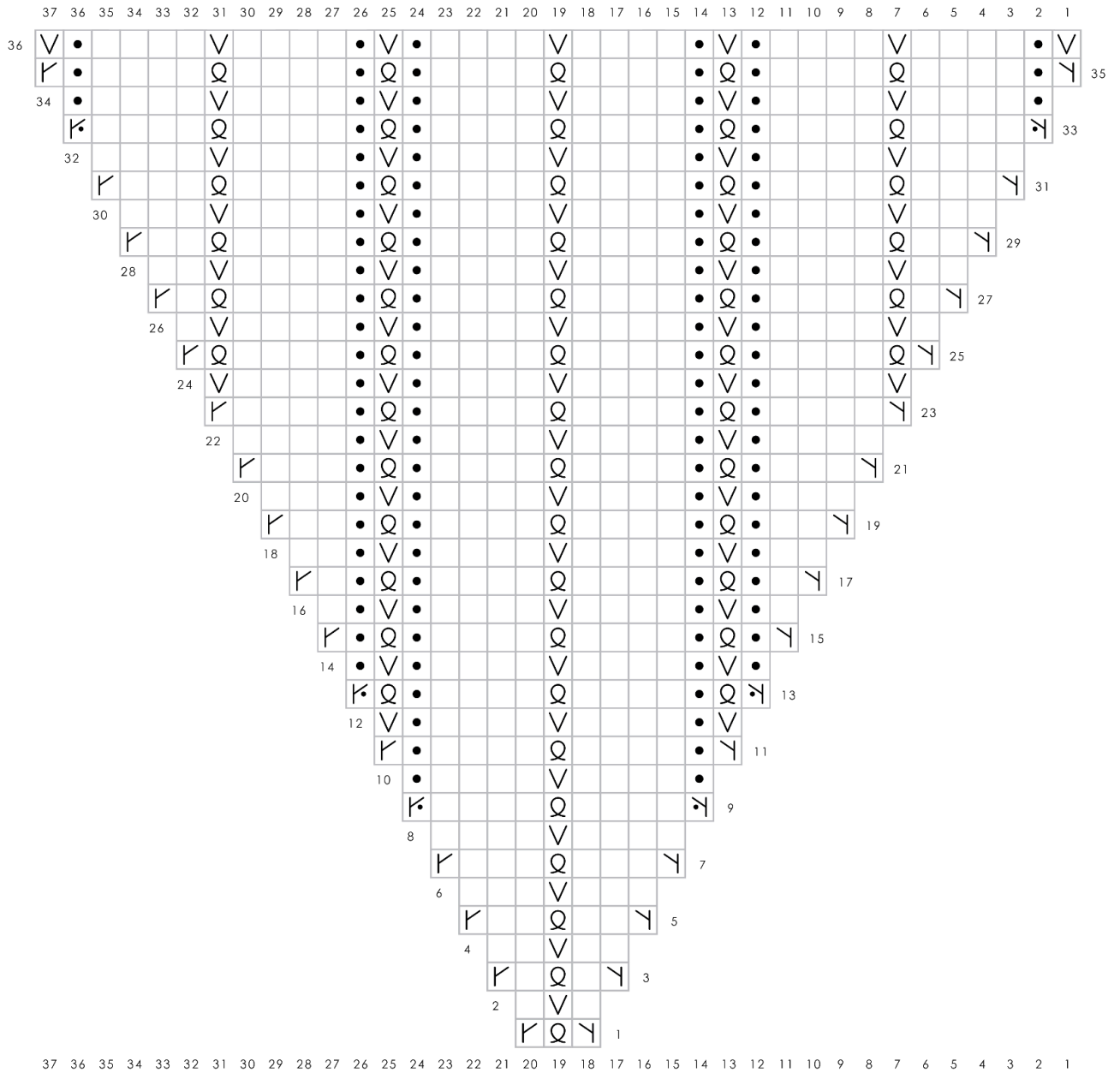


1/3 LC

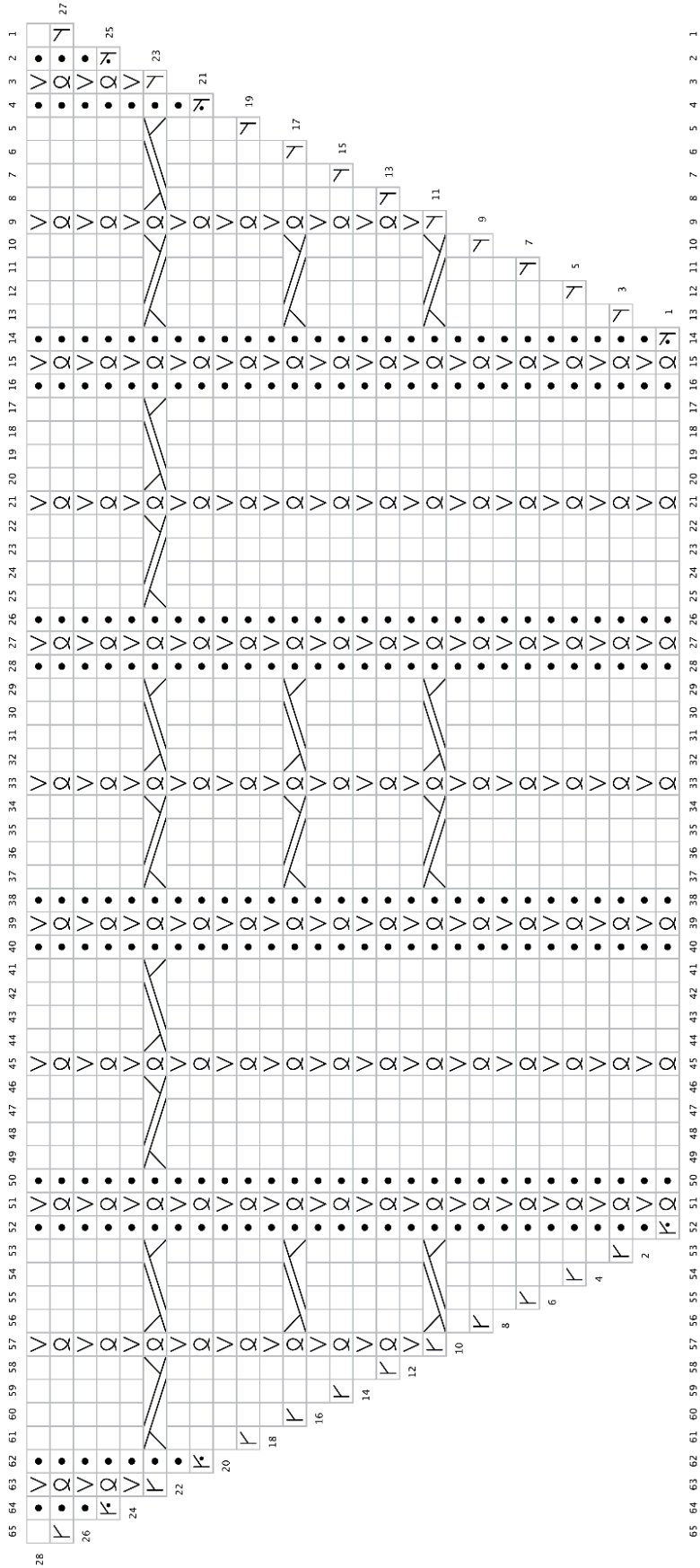


Pattern repeat

## Chart A

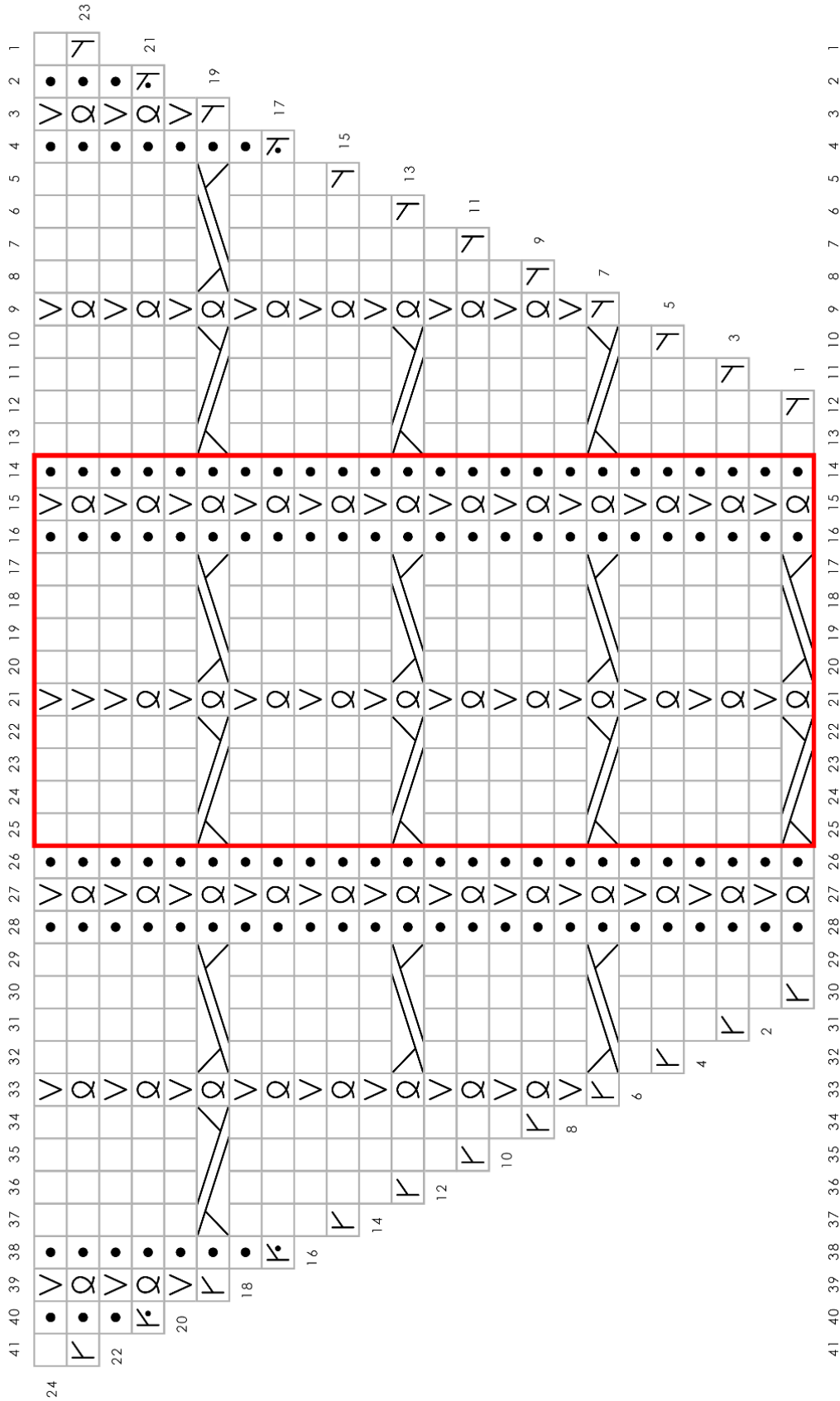


## Chart B





## Chart C



## Chart D

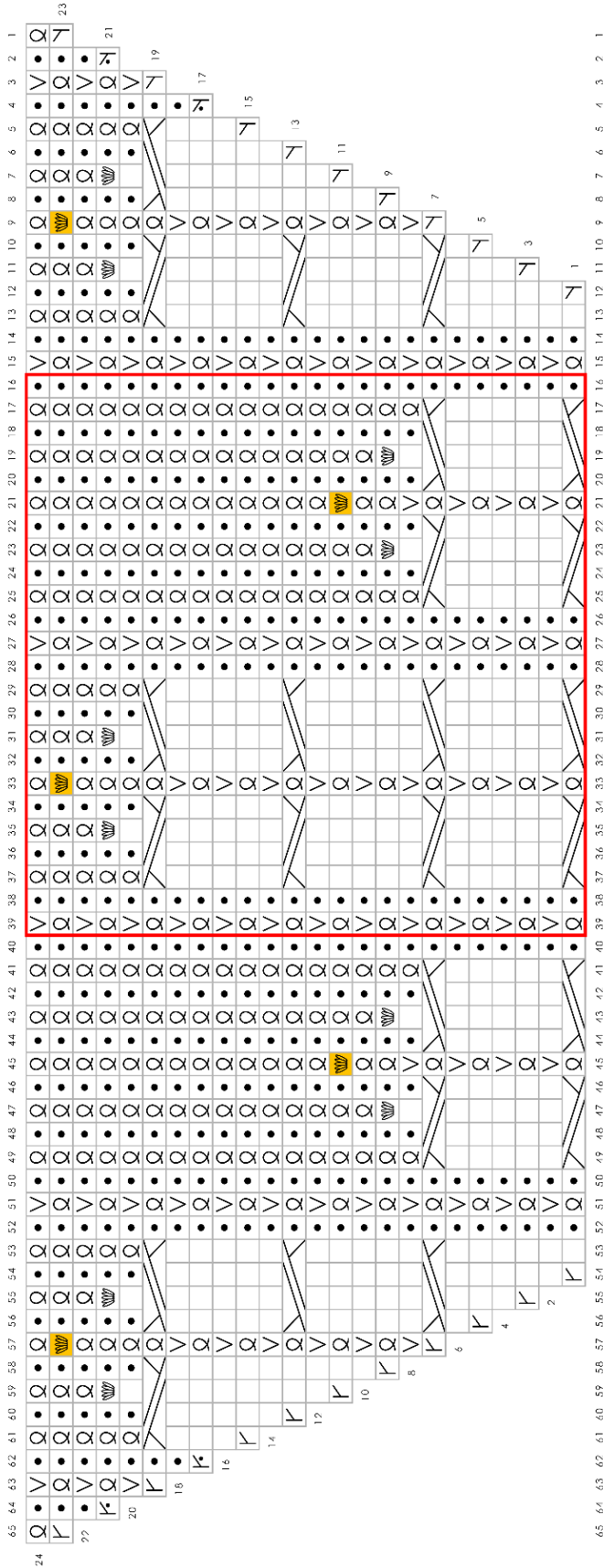
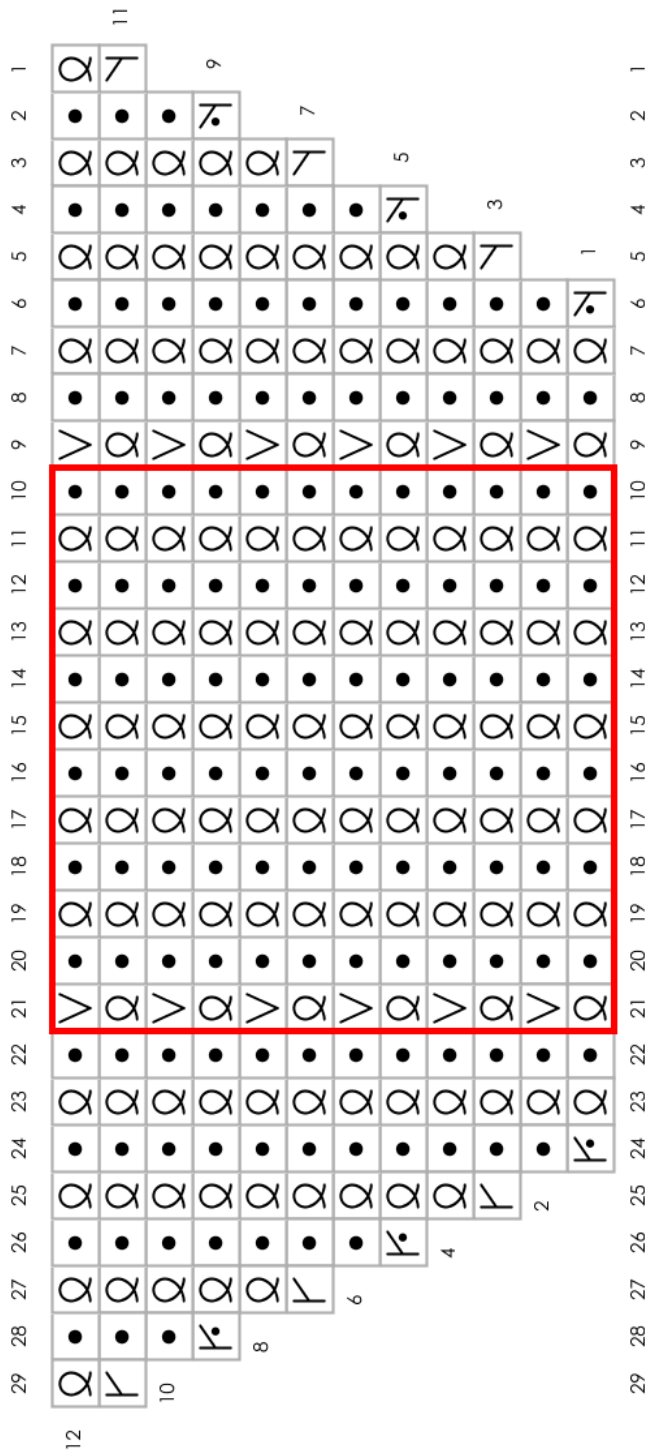


Chart E



## WRITTEN INSTRUCTIONS FOR CHARTS

### CHART A

**Row 1 (RS):** M1L, k1tbl, M1R. 3 sts

**Row 2 (WS):** P1, sl1 wyif, p1.

**Row 3:** M1L, k1, k1tbl, k1, M1R. 5 sts

**Row 4:** P2, sl1 wyif, p2.

**Row 5:** M1L, k2, k1tbl, k2, M1R. 7 sts

**Row 6:** P3, sl1 wyif, p3.

**Row 7:** M1L, k3, k1tbl, k3, M1R. 9 sts

**Row 8:** P4, sl1 wyif, p4.

**Row 9:** M1LP, k4, k1tbl, k4, M1RP. 11 sts

**Row 10:** K1, p4, sl1 wyif, p4, k1.

**Row 11:** M1L, p1, k4, k1tbl, k4, p1, M1R. 13 sts

**Row 12:** Sl1 wyif, k1, p4, sl1 wyif, p4, k1, sl1 wyif.

**Row 13:** M1LP, k1tbl, p1, k4, k1tbl, k4, p1, k1tbl, M1RP. 15 sts

**Row 14:** K1, sl1 wyif, k1, p4, sl1 wyif, p4, k1, sl1 wyif, k1.

**Row 15:** M1L, p1, k1tbl, p1, k4, k1tbl, k4, p1, k1tbl, p1, M1R. 17 sts

**Row 16:** P1, k1, sl1 wyif, k1, p4, sl1 wyif, p4, k1, sl1 wyif, k1, p1.

**Row 17:** M1L, k1, p1, k1tbl, p1, k4, k1tbl, k4, p1, k1tbl, p1, k1, M1R. 19 sts

**Row 18:** P2, k1, sl1 wyif, k1, p4, sl1 wyif, p4, k1, sl1 wyif, k1, p2.

**Row 19:** M1L, k2, p1, k1tbl, p1, k4, k1tbl, k4, p1, k1tbl, p1, k2, M1R. 21 sts

**Row 20:** P3, k1, sl1 wyif, k1, p4, sl1 wyif, p4, k1, sl1 wyif, k1, p3.

**Row 21:** M1L, k3, p1, k1tbl, p1, k4, k1tbl, k4, p1, k1tbl, p1, k3, M1R. 23 sts

**Row 22:** P4, k1, sl1 wyif, k1, p4, sl1 wyif, p4, k1, sl1 wyif, k1, p4.

**Row 23:** M1L, k4, p1, k1tbl, p1, k4, k1tbl, k4, p1, k1tbl, p1, k4, M1R. 25 sts

**Row 24:** [sl1 wyif, p4, k1, sl1 wyif, k1, p4] twice, sl1 wyif.

**Row 25:** M1L, [k1tbl, k4, p1, k1tbl, p1, k4] twice, k1tbl, M1R. 27 sts

**Row 26:** P1, [sl1 wyif, p4, k1, sl1 wyif, k1, p4] twice, sl1 wyif, p1.

**Row 27:** M1L, k1, [k1tbl, k4, p1, k1tbl, p1, k4] twice, k1tbl, k1, M1R. 29 sts

**Row 28:** P2, [sl1 wyif, p4, k1, sl1 wyif, k1, p4] twice, sl1 wyif, p2.

**Row 29:** M1L, k2, [k1tbl, k4, p1, k1tbl, p1, k4] twice, k1tbl, k2, M1R. 31 sts

**Row 30:** P3, [sl1 wyif, p4, k1, sl1 wyif, k1, p4] twice, sl1 wyif, p3.

**Row 31:** M1L, k3, [k1tbl, k4, p1, k1tbl, p1, k4] twice, k1tbl, K3, M1R. 33 sts

**Row 32:** [P4, sl1 wyif, p4, k1, sl1 wyif, k1] twice, p4, sl1 wyif, p4.

**Row 33:** M1LP, [k4, k1tbl, k4, p1, k1tbl, p1] twice, k4, k1tbl, k4, M1RP. 35 sts

**Row 34:** [K1, p4, sl1 wyif, p4, k1, sl1 wyif] twice, k1, p4, sl1 wyif, p4, k1.

**Row 35:** M1L, [p1, k4, k1tbl, k4, p1, k1tbl] twice, p1, k4, k1tbl, k4, p1, M1R. 37 sts

**Row 36:** [sl1 wyif, k1, p4, sl1 wyif, p4, k1] 3 times, sl1 wyif.

## CHART B

- Row 1 (RS):** M1LP, [k1tbl, p1, k4, k1tbl, k4, p1] 3 times, k1tbl, M1RP. 39 sts
- Row 2 (WS):** [K1, sl1 wyif, k1, p4, sl1 wyif, p4] 3 times, k1, sl1 wyif, k1.
- Row 3:** M1L, [p1, k1tbl, p1, k4, k1tbl, k4] 3 times, p1, k1tbl, p1, M1R. 41 sts
- Row 4:** P1, [k1, sl1 wyif, k1, p4, sl1 wyif, p4] 3 times, k1, sl1 wyif, k1, p1.
- Row 5:** M1L, k1, [p1, k1tbl, p1, k4, k1tbl, k4] 3 times, p1, k1tbl, p1, k1, M1R. 43 sts
- Row 6:** P2, [k1, sl1 wyif, k1, p4, sl1 wyif, p4] 3 times, k1, sl1 wyif, k1, p2.
- Row 7:** M1L, k2, [p1, k1tbl, p1, k4, k1tbl, k4] 3 times, p1, k1tbl, p1, k2, M1R. 45 sts
- Row 8:** P3, [k1, sl1 wyif, k1, p4, sl1 wyif, p4] 3 times, k1, sl1 wyif, k1, p3.
- Row 9:** M1L, k3, [p1, k1tbl, p1, k4, k1tbl, k4] 3 times, p1, k1tbl, p1, k3, M1R. 47 sts
- Row 10:** [P4, k1, sl1 wyif, k1, p4, sl1 wyif] 3 times, p4, k1, sl1 wyif, k1, p4.
- Row 11:** M1L, 1/3 LC, p1, k1tbl, p1, k4, k1tbl, k4, p1, k1tbl, p1, 1/3 RC, k1tbl, 1/3 LC, p1, k1tbl, p1, k4, k1tbl, k4, p1, k1tbl, p1, 1/3 RC, M1R. 49 sts
- Row 12:** [sl1 wyif, p4, k1, sl1 wyif, k1, p4] 4 times, sl1 wyif.
- Row 13:** M1L, [k1tbl, k4, p1, k1tbl, p1, k4] 4 times, k1tbl, M1R. 51 sts
- Row 14:** P1, [sl1 wyif, p4, k1, sl1 wyif, k1, p4] 4 times, sl1 wyif, p1.
- Row 15:** M1L, k1, [k1tbl, k4, p1, k1tbl, p1, k4] 4 times, k1tbl, k1, M1R. 53 sts
- Row 16:** P2, [sl1 wyif, p4, k1, sl1 wyif, k1, p4] 4 times, sl1 wyif, p2.
- Row 17:** M1L, k2, [k1tbl, 1/3 LC, p1, k1tbl, p1, k4, k1tbl, k4, p1, k1tbl, p1, 1/3 RC] twice, k1tbl, k2, M1R. 55 sts
- Row 18:** P3, [sl1 wyif, p4, k1, sl1 wyif, k1, p4] 4 times, sl1 wyif, p3.
- Row 19:** M1L, k3, [k1tbl, k4, p1, k1tbl, p1, k4] 4 times, k1tbl, k3, M1R. 57 sts
- Row 20:** [P4, sl1 wyif, p4, k1, sl1 wyif, k1] 4 times, p4, sl1 wyif, p4.
- Row 21:** M1LP, [k4, k1tbl, k4, p1, k1tbl, p1] 4 times, k4, k1tbl, k4, M1RP. 59 sts
- Row 22:** [K1, p4, sl1 wyif, p4, k1, sl1 wyif] 4 times, k1, p4, sl1 wyif, p4, k1.
- Row 23:** M1L, [p1, 1/3 RC, k1tbl, 1/3 LC, p1, k1tbl] 4 times, p1, 1/3 RC, k1tbl, 1/3 LC, p1, M1R. 61 sts
- Row 24:** [sl1 wyif, k1, p4, sl1 wyif, p4, k1] 5 times, sl1 wyif.
- Row 25:** M1LP, [k1tbl, p1, k4, k1tbl, k4, p1] 5 times, k1tbl, M1RP. 63 sts
- Row 26:** [K1, sl1 wyif, k1, p4, sl1 wyif, p4] 5 times, k1, sl1 wyif, k1.
- Row 27:** M1L, [p1, k1tbl, p1, k4, k1tbl, k4] 5 times, p1, k1tbl, p1, M1R. 65 sts
- Row 28:** P1, [k1, sl1 wyif, k1, p4, sl1 wyif, p4] 5 times, k1, sl1 wyif, k1, p1.

## CHART C

- Row 1 (RS):** M1L, k1, [p1, k1tbl, p1, 1/3 RC, k1tbl, 1/3 LC] to last 4 sts, p1, k1tbl, p1, k1, M1R. 2 sts inc
- Row 2 (WS):** P2, k1, sl1 wyif, k1, [p4, sl1 wyif, p4, k1, sl1 wyif, k1] to last 2 sts, p2.
- Row 3:** M1L, k2, [p1, k1tbl, p1, k4, k1tbl, k4] to last 5 sts, p1, k1tbl, p1, k2, M1R. 2 sts inc
- Row 4:** P3, k1, sl1 wyif, k1, [p4, sl1 wyif, p4, k1, sl1 wyif, k1] to last 3 sts, p3.
- Row 5:** M1L, k3, p1, k1tbl, (p1, k4, k1tbl, k4) to last 6 sts, p1, k1tbl, p1, k3, M1R. 2 sts inc
- Row 6:** P4, k1, sl1 wyif, k1, [p4, sl1 wyif, p4, k1, sl1 wyif, k1] to last 4 sts, p4.

**Row 7:** M1L, 1/3 LC, [p1, k1tbl, p1, 1/3 RC, k1tbl, 1/3 LC] to last 7 sts, p1, k1tbl, p1, 1/3 RC, M1R. 2 sts inc

**Row 8:** S1l wyif, p4, k1, sl1 wyif, k1, [p4, sl1 wyif, p4, k1, sl1 wyif, p1] to last 5 sts, p4, sl1 wyif.

**Row 9:** M1L, k1tbl, k4, [p1, k1tbl, p1, k4, k1tbl, k4] to last 8 sts, p1, k1tbl, p1, k4, k1tbl, M1R. 2 sts inc

**Row 10:** P1, sl1 wyif, p4, k1, sl1 wyif, k1, [p4, sl1 wyif, p4, k1, sl1 wyif, p1] to last 6 sts, p4, sl1 wyif, p1.

**Row 11:** M1L, k1, k1tbl, k4, [p1, k1tbl, p1, k4, k1tbl, k4] to last 9 sts, p1, k1tbl, p1, k4, k1tbl, k1, M1R. 2 sts inc

**Row 12:** P2, sl1 wyif, p4, k1, sl1 wyif, k1, [p4, sl1 wyif, p4, k1, sl1 wyif, p1] to last 7 sts, p4, sl1 wyif, p2.

**Row 13:** M1L, k2, k1tbl, 1/3 LC, [p1, k1tbl, p1, 1/3 RC, k1tbl, 1/3 LC] to last 10 sts, p1, k1tbl, p1, 1/3 RC, k1tbl, k2, M1R. 2 sts inc

**Row 14:** P3, sl1 wyif, p4, k1, sl1 wyif, k1, [p4, sl1 wyif, p4, k1, sl1 wyif, p1] to last 8 sts, p4, sl1 wyif, p3.

**Row 15:** M1L, k3, k1tbl, k4, [p1, k1tbl, p1, k4, k1tbl, k4] to last 11 sts, p1, k1tbl, p1, k4, k1tbl, k3, M1R. 2 sts inc

**Row 16:** [P4, sl1 wyif, p4, k1, sl1 wyif, k1] to last 9 sts, p4, sl1 wyif, p4.

**Row 17:** M1LP, k4, k1tbl, k4, [p1, k1tbl, p1, k4, k1tbl, k4] to to end, M1RP. 2 sts inc

**Row 18:** K1, [p4, sl1 wyif, p4, k1, sl1 wyif, k1] to last 10 sts, p4, sl1 wyif, p4, k1.

**Row 19:** M1L, p1, 1/3 RC, k1tbl, 1/3 LC, [p1, k1tbl, p1, 1/3 RC, k1tbl, 1/3 LC] to last st, p1, M1R. 2 sts inc

**Row 20:** S1l wyif, k1, [p4, sl1 wyif, p4, k1, sl1 wyif, k1] to last 11 sts, p4, sl1 wyif, p4, k1, sl1 wyif.

**Row 21:** M1LP, k1tbl, p1, k4, k1tbl, k4, [p1, k1tbl, p1, k4, k1tbl, k4] to last 2 sts, p1, k1tbl, M1RP. 2 sts inc

**Row 22:** K1, sl1 wyif, k1, [p4, sl1 wyif, p4, k1, sl1 wyif, k1] to end.

**Row 23:** M1L, [p1, k1tbl, p1, k4, k1tbl, k4] to last 3 sts, p1, k1tbl, p1, M1R. 2 sts inc

**Row 24:** P1, k1, sl1 wyif, k1, [p4, sl1 wyif, p4, k1, sl1 wyif, k1] to last st, p1.

## CHART D

**Row 1 (RS):** M1L, k1, p1, k1tbl, [(p1, 1/3 RC, k1tbl, 1/3 LC, p1, k1tbl) x2] to last 14 sts, p1, 1/3 RC, k1tbl, 1/3 LC, p1, k1tbl, p1, k1, M1R. 2 sts inc

**Row 2 (WS):** P2, k1, sl1 wyif, k1, [p4, sl1 wyif, p4, k1, sl1 wyif, k1] to last 2 sts, p2.

**Row 3:** M1L, k2, [p1, k1tbl, p1, k4, k1tbl, k4] to last 5 sts, p1, k1tbl, p1, k2, M1R. 2 sts inc

**Row 4:** P3, k1, sl1 wyif, k1, [p4, sl1 wyif, p4, k1, sl1 wyif, k1] to last 3 sts, p3.

**Row 5:** M1L, k3, [p1, k1tbl, p1, k4, k1tbl, k4] to last 6 sts, p1, k1tbl, p1, k3, M1R. 2 sts inc

**Row 6:** P4, k1, sl1 wyif, k1, [p4, sl1 wyif, p4, k1, sl1 wyif, k1] to last 4 sts, p4.

**Row 7:** M1L, 1/3 LC, [p1, k1tbl, p1, 1/3 RC, k1tbl, 1/3 LC] to last 7 sts, p1, k1tbl, p1, 1/3 RC, M1R. 2 sts inc

**Row 8:** S11 wyif, p4, k1, sl1 wyif, k1, p1tbl, k1, p1, k1, sl1 wyif, k1, p1, k1, p1tbl, p1, [sl1 wyif, k1, p4, sl1 wyif, p4, k1, sl1 wyif, k1, p1tbl, k1, p1, k1, sl1 wyif, k1, p1, k1, p1tbl, k1] to last 7 sts, sl1 wyif, p4, sl1 wyif.

**Row 9:** M1L, k1tbl, k4, p1, k1tbl, [p1, k1tbl, p1, 5-st nupp, p1, k1tbl, p1, 5-st nupp, (p1, k1tbl) twice, p1, k4, k1tbl, k4, p1, k1tbl] to last 18 sts, p1, k1tbl, p1, 5-st nupp, p1, k1tbl, p1, 5-st nupp, [p1, k1tbl] twice, p1, k4, k1tbl, M1R. 2 sts inc

**Row 10:** P1, sl1 wyif, p4, k1, sl1 wyif, [k1, p1tbl] 5 times, k1, [sl1 wyif, k1, p4, sl1 wyif, p4, k1, sl1 wyif, (k1, p1tbl) 5 times, k1] to last 8 sts, sl1 wyif, k1, p4, sl1 wyif, p1.

**Row 11:** M1L, k1, k1tbl, k4, p1, k1tbl, [(p1, k1tbl) twice, p1, 7-st nupp, (p1, k1tbl) 3 times, p1, k4, k1tbl, k4, p1, k1tbl] to last 19 sts, [p1, k1tbl] twice, p1, 7-st nupp, [p1, k1tbl] 3 times, p1, k4, k1tbl, k1, M1R. 2 sts inc

**Row 12:** P2, sl1 wyif, p4, k1, sl1 wyif, [k1, p1tbl] 5 times, k1, [(sl1 wyif, k1, p4, sl1 wyif, p4, k1, sl1 wyif, (k1, p1tbl) 5 times, k1] to last 9 sts, sl1 wyif, k1, p4, sl1 wyif, p2.

**Row 13:** M1L, k2, k1tbl, 1/3 LC, p1, k1tbl, [(p1, k1tbl) 6 times, p1, 1/3 RC, k1tbl, 1/3 LC, p1, k1tbl] to last 20 sts, [p1, k1tbl] 6 times, p1, 1/3 RC, k1tbl, k2, M1R. 2 sts inc

**Row 14:** P3, sl1 wyif, p4, k1, sl1 wyif, [k1, p1tbl] 5 times, k1, [(sl1 wyif, k1, p4, sl1 wyif, p4, k1, sl1 wyif, (k1, p1tbl) 5 times, k1] to last 10 sts, sl1 wyif, k1, p4, sl1 wyif, p3.

**Row 15:** M1L, k3, k1tbl, k4, p1, k1tbl, [(p1, k1tbl) 6 times, p1, k4, k1tbl, k4, p1, k1tbl] to last 21 sts, [p1, k1tbl] 6 times, p1, k4, k1tbl, k3, M1R. 2 sts inc

**Row 16:** P4, sl1 wyif, p4, k1, sl1 wyif, [k1, p1tbl] 5 times, k1, [(sl1 wyif, k1, p4, sl1 wyif, p4, k1, sl1 wyif, (k1, p1tbl) 5 times, k1] to last 11 sts, sl1 wyif, k1, p4, sl1 wyif, p4.

**Row 17:** M1LP, [k4, k1tbl, k4, (p1, k1tbl) 7 times, p1] to last 9 sts, k4, k1tbl, k4, M1RP. 2 sts inc

**Row 18:** K1, [p4, sl1 wyif, p4, k1, sl1 wyif, (k1, p1tbl) 5 times, k1, sl1 wyif, p1] to last 10 sts, p4, sl1 wyif, p4, k1.

**Row 19:** M1L, p1, [1/3 RC, k1tbl, 1/3 LC, (p1, k1tbl) 7 times, p1] to last 10 sts, 1/3 RC, k1tbl, 1/3 LC, p1, M1R. 2 sts inc

**Row 20:** [sl1 wyif, (k1, p1tbl, k1, p1) twice, k1, p1tbl, k1, sl1 wyif, (k1, p1tbl) 5 times, p1] to last 13 sts, sl1 wyif, [k1, p1tbl, k1, p1] twice, k1, p1tbl, k1, sl1 wyif.

**Row 21:** M1LP, [k1tbl, (p1, k1tbl, p1, 5-st nupp) twice, (p1, k1tbl) 7 times] to last 13 sts, k1tbl, [p1, k1tbl, p1, 5-st nupp] twice, [p1, k1tbl] twice, M1RP. 2 sts inc

**Row 22:** K1, [sl1 wyif, (k1, p1tbl) 5 times, k1] to last 2 sts, sl1 wyif, k1.

**Row 23:** M1L, p1, k1tbl, p1, [(p1, k1tbl) twice, 7-st nupp, p1, (k1tbl, p1) 9 times] to last 12 sts, [p1, k1tbl] twice, 7-st nupp, [p1, k1tbl] 3 times, p1, M1R. 2 sts inc

**Row 24:** P1tbl, k1, [sl1 wyif, (k1, p1tbl) 5 times, k1] to last 3 sts, sl1 wyif, k1, p1tbl.

## CHART E

**Row 1 (RS):** M1LP, [k1tbl, p1] to 1 st before marker, k1tbl, M1RP. 2 sts inc

**Row 2 (WS):** K1, p1tbl, k1, [sl1 wyif, (k1, p1tbl) 5 times, k1] to last 4 sts, sl1 wyif, k1, p1tbl, k1.

**Row 3:** M1L, [p1, k1tbl] to 1 st before marker, p1, M1R. 2 sts inc

**Row 4:** [P1tbl, k1] twice, [sl1 wyif, (k1, p1tbl) 5 times, k1] to last 5 sts, sl1 wyif, [k1, p1tbl] twice.

**Row 5:** Rep row 1. 2 sts inc

# pompom x hobbii

**Row 6:** K1, [p1tbl, k1] twice, [sl1 wyif, (k1, p1tbl) 5 times, k1] to last 6 sts, sl1 wyif, [k1, p1tbl] twice, k1.

**Row 7:** Rep row 3. 2 sts inc

**Row 8:** [P1tbl, k1] 3 times, [sl1 wyif, (k1, p1tbl) 5 times, k1] to last 7 sts, sl1 wyif, [k1, p1tbl] 3 times.

**Row 9:** Rep row 1. 2 sts inc

**Row 10:** K1, [p1tbl, k1] 3 times, [sl1 wyif, (k1, p1tbl) 5 times, k1] to last 8 sts, sl1 wyif, [k1, p1tbl] 3 times, k1.

**Row 11:** Rep row 3. 2 sts inc

**Row 12:** [P1tbl, k1] 4 times, k1, [sl1 wyif, (k1, p1tbl) 5 times, k1] to last 9 sts, sl1 wyif, [k1, p1tbl] 4 times.