



KNITTING PATTERN

# Yorkshire Terrier

Dog Sweater

Design: Potestrikk | Hobbii Design

## MATERIALS

### Friends Wool

Main color: 2 skeins of col. Maroon (49)

Background color: 1 skein of col. Off White (02)

Pattern color: 1 skein of col. Aqua (91)

Circular needle 3.0 mm, 40 cm

Circular needle 4.0 mm, 40 cm

Double pointed needles 4.0 mm

## YARN QUALITY

 Friends Wool, Hobbii

100% Wool

50 g (1.75 oz) = 100 m (174 yds)

## GAUGE

22 sts x 28 rows = 10 cm x 10 cm / 4" x 4"

## SIZE

XS

*Yorkshire Terrier or other similar breeds.*

## MEASUREMENTS

Neck circumference: 25 cm / 9.75"

Neck length: 6 cm / 2.25"

Chest length: 8 cm / 3.25"

Chest circumference: 40 cm / 17.75"

Waist circumference: 35 cm / 13.75"

Back length: 30 cm / 11.75"

Circumference around one front leg: 12 cm / 4.75"

Belly length: 10 cm / 4" (male) / 15 cm / 6" (female)

Distance between front legs: 8 cm / 3.25"

## PATTERN INFORMATION

Dog sweater with a comfortable ribbed neck and a cool fairisle pattern. Knitted top-down following a chart for the colorwork.

The pattern is also available in the following sizes:

Chihuahua (XXS)

Bichon Havanais (S)

Cocker Spaniel (M)

Dalmatian (L)

## HASHTAGS FOR SOCIAL MEDIA

#hobbiidesign #hobbiiyorkshireterrier

## BUY THE YARN HERE

<https://shop.hobbii.com/yorkshire-terrier-dog-sweater>

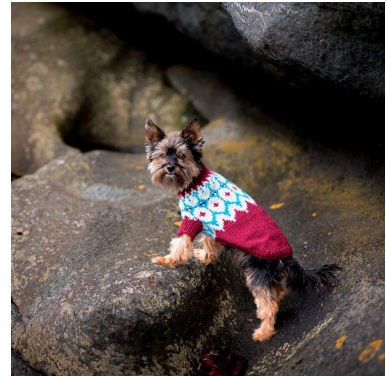
## QUESTIONS

If you have any questions regarding this pattern, please feel free to email us at [support@hobbii.com](mailto:support@hobbii.com). Please make sure to include the pattern's name and number.

Happy Crafting!



## Pattern



### INFO AND TIPS

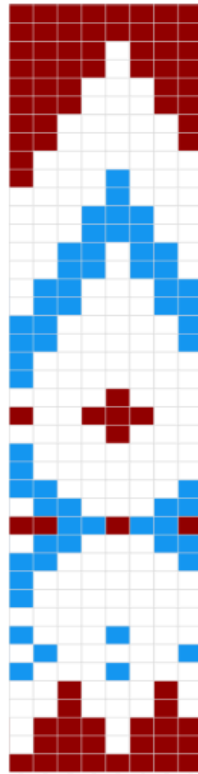
**Increase:** Increase one stitch by picking up the strand between two stitches and knitting it twisted to avoid holes. For the chest area, it is recommended to increase towards the right on the right side of the marker stitch, and towards the left on the left side of the marker stitch for the best result.

**Decrease:** Decrease one stitch by knitting two stitches together. For the belly area it is recommended to do a left-leaning decrease on the left side of the belly-ribbing, and a right-leaning decrease on the right side for the best result.

## Charts



A1



A2



A3



A4

- Main color
- Background color
- Pattern color
- NO stitch

## PATTERN

### Neck

Cast on 60 stitches with circular needle size 3.0 mm using Hobbii Friends Wool in main color. Knit 1x1 ribbing (1 knit, 1 purl) until the piece measures 12 cm / 4.75" from the cast-on edge. Place a marker at the first stitch to mark the start of the round. Switch to needle size 4.0 mm.

### Chest

Continue knitting in stockinette stitch. In the first round, increase 16 stitches evenly (total 76 stitches). In the next round, begin following the pattern according to chart A: Knit the marker stitch (the first stitch of the round) in diagram A4. Then, knit pattern A3, followed by 9 repetitions of pattern A2, and finish with pattern A1 over the remaining stitches. Increase 2 stitches every 2nd round (one on each side of the marker) for a total of 10 rounds of increases (total 96 stitches). Incorporate the increased stitches into the pattern as shown in patterns A1 and A3. The marker is always knitted in A4. Continue knitting without further increases. When the sweater measures 8 cm / 3.25" from the end of the ribbing, the chest part is finished. Check the gauge along the way.

### Bind off for Legs

The pattern continues after making the holes for legs. Knit the belly piece in ribbing (1 knit, 1 purl) in background color: Knit 9 stitches in ribbing from the start of the round, the marker stitch counts as the first stitch. Turn and knit ribbing over 17 stitches. Turn again, and continue in ribbing, back and forth, over the belly for 2 cm / 0.75", making sure the last row is knitted from the right side. Place the 11 stitches on each side of the belly piece on holding threads (creating leg holes). Cast on 11 new stitches on the needle over the first leg hole. Knit stockinette stitch over the stitches on the back, continuing with the diagram. Then cast on 11 new stitches on the needle over the hole for the second leg.

### Harness Hole

If no opening for a harness is desired, this section can be skipped. Measure the placement of the harness hole. Bind off 5 stitches at the center of the back where the harness hole should be. In the next round, cast on 5 stitches over the bound-off area.

### Belly

Continue in stockinette stitch until the start of the belly piece. Switch to ribbing (1 knit, 1 purl) over the 17 belly stitches. Alternate the main color and pattern color in ribbing to carry pattern threads. When the work measures 3 cm / 1.25" from the start of the ribbing, decrease 2 stitches (one before and one after the ribbing). Continue decreasing 2 stitches every 2nd round a total of 6 times (total 84 stitches). Knit until the ribbing measures 8 cm / 3.25" (male) / 14 cm / 5.5" (female). Place the 17 belly stitches on a holding thread.

### Back

Continue knitting back and forth in stockinette stitch while decreasing to round off the back. Decrease two stitches on (every second row (male) / each row (female)) by knitting the first two and the last two stitches together. Repeat this until the work measures 28 cm / 11" from the end of the neck.

### Ribbing

Pick up one stitch in each stitch along the sides of the sweater and place the belly stitches back on the needle. Knit ribbing (1 knit, 1 purl) over all the stitches. Do not change the



needle size for knitting the ribbing. While knitting the ribbing, decrease two stitches (every round [male] / every second round [female]). Decrease one stitch just before and one stitch just after the belly piece. Continue knitting ribbing for 2 cm / 0.75". Bind off and weave in the ends.

### **Legs**

Place the 11 stitches from the holding thread back on needle size 4.0 mm. Pick up 21 stitches with yarn in main color to have 32 stitches total. Knit ribbing until the legs measure 5 cm / 2". Bind off and weave in ends.

### **Enjoy!**

Potestrikk