



KNITTING PATTERN

Adirondack

Cowl

Design: Annelise Driscoll Gingrow - Grey Cap Knits | Hobbii Design





MATERIALS

4 skeins of Soft Alpaca, color 02 (MC)
2 skeins of Dream Color, color 25 (CC)

Circular needles 3.25 mm, 60 cm / US 3, 24"
Circular needles 3.5 mm, 60 cm / US 4, 24"
Crochet hook 4.25 mm / US G/6
Tapestry needle
Stitch marker
150" (381 cm) length of scrap yarn

YARN QUALITY

 **Soft Alpaca**, Hobbii
100 % Alpaca
50 g / 1.75 oz = 165 m / 180 yds

 **Dream Color**, Hobbii
100 % Wool
100 g / 3.5 oz = 400 m / 437 yds

GAUGE

30 sts x 30 rnds = 10 cm x 10 cm / 4" x 4" in
"Section 2: Rnds 1-13" pattern

ABBREVIATIONS

[] = work as many times as directed
BO = bind off
CO = cast on
K = knit
K1CC = knit 1 using CC
K1MC = knit 1 using MC
MC = main color
CC = contrast color
P = purl
Rnd(s) = round(s)
Sl1p = slip 1 purlwise
SM = stitch marker
Wyib = with yarn in back

QUESTIONS

If you have any questions regarding this pattern, please feel free to email us at support@hobbii.com. Please make sure to include the pattern's name and number.

Happy Crafting!

SIZE

One size

MEASUREMENTS

Width: 10" / 25 cm
Length after grafting: 39" / 99 cm

PATTERN INFORMATION

Inspired by the fall foliage in the Adirondack Mountains, this colorwork infinity cowl is the perfect project for your winter wardrobe. Using one solid yarn and one color-changing yarn, and designed to require minimal float catching, this pattern is a great choice for knitters who are new to stranded colorwork. The Adirondack Infinity Cowl uses a provisional cast on and is worked in the round before being grafted together at the cast-on and bind-off ends with kitchener stitch. This method creates a seamless, double-layered fabric that's sure to keep you toasty on brisk autumn days.

TECHNIQUE VIDEOS

[Provisional Cast-On](#)
[Kitchener Stitch \(Grafting\)](#)

HASHTAGS FOR SOCIAL MEDIA

#hobbii design #hobbii adirondack
#hobbii naturalbeauty

BUY THE YARN HERE

<https://shop.hobbii.com/adirondack-cowl>



Pattern



INFO AND TIPS

- Each section of the pattern makes note of which color should be held dominant.
- All stockinette rounds are marked with (MC) or (CC) to help you stay on track.
- The only float you will need to catch in this pattern falls in the transition between Section 3: Rnd 18 - Rnd 19. (This only occurs three times in the pattern.)

CAST-ON AND SET-UP ROW

Using larger needles, a crochet hook, and a 150" (381 cm) length of scrap yarn, CO 140 sts with provisional method.

Row 1 (MC): Attach MC and K to end of row. Being careful not to twist, place SM and join sts in rnd.

SECTION 1

For this section, hold CC dominant.

Rnds 1-4 (MC): Using MC, K to end of rnd.

Rnd 5 (CC): Attach CC, K to end of rnd.

Rnd 6 (CC): Sl1p wyib, K to end of rnd.

Rnd 7 (MC): As Rnd 1.

Rnd 8 (MC): Sl1p wyib, K to end of rnd.

Rnd 9 (MC): As Rnd 1.

Rnd 10: [K2MC, K1CC, K2MC] to end of rnd.

Rnd 11: [K1MC, K3CC, K1MC] to end of rnd.

Rnd 12: As Rnd 10.

Rnds 13-15 (MC): As Rnd 1.

Rnd 16 (CC): Using CC, K to end of rnd.

Rnd 17 (CC): As Rnd 6.

Rnds 18-20 (MC): As Rnds 7-9.

Rnd 21: [K1CC, K3MC, K1CC] to end of rnd.

Rnd 22: [K1MC, K1CC, K1MC, K1CC, K1MC] to end of rnd.

Rnd 23: [K2MC, K1CC, K2MC] to end of rnd.

Rnd 24: As Rnd 22.

Rnd 25: As Rnd 21.

Rnds 26-28 (MC): As Rnd 1.

Rnd 29 (CC): As Rnd 16.

Rnd 30 (CC): As Rnd 6.

Rep [Rnd 7 - Rnd 17] one more time.

SECTION 2

For this section, hold MC dominant.

Rnd 1 (MC): Using MC, K to end of rnd.

Rnd 2 (MC): Sl1p wyib, K to end of rnd.

Rnds 3-5 (MC): As rnd 1.

Rnd 6 (CC): Using CC, K to end of rnd.

Rnd 7 (CC): Sl1p wyib, K to end of rnd.

Rnd 8: [K2CC, K2MC] to end of rnd.

Rnds 9-10 (CC): As Rnd 6.

Rnd 11: [K2MC, K2CC] to end of rnd.

Rnds 12-13 (CC): As Rnd 6.

Rep [Rnd 8 - Rnd 13] one more time.

Rep [Rnd 8 - Rnd 10] one more time.

Rnds 14-15 (MC): As Rnds 1-2.

Rnds 16-17 (CC): As Rnds 6-7.

Rnd 18 (CC): As Rnd 6.

Rnd 19: [K3CC, K1MC, K3CC] to end of rnd.

Rnd 20: [K2CC, K3MC, K2CC] to end of rnd.

Rnd 21: [K1CC, K5MC, K1CC] to end of rnd.

Rnd 22: As Rnd 20.

Rnd 23: As Rnd 19.

Rnds 24-26 (CC): As Rnd 6.

Rnds 27-28 (MC): As Rnds 1-2.

Rnds 29-30 (CC): As Rnds 6-7.

Rnd 31: [K1MC, K3CC, K1MC, K2CC] to end of rnd.

Rnd 32: [K1CC, K1MC, K1CC, K1MC, K3CC] to end of rnd.

Rnd 33: [K2CC, K1MC, K2CC, K2MC] to end of rnd.

Rnd 34: As Rnd 32.

Rnd 35: As Rnd 31.

Rnds 36-37: As Rnd 6.

SECTION 3

For this section, hold CC dominant.

Rnd 1 (MC): Using MC, K to end of rnd.

Rnd 2 (MC): Sl1p wyib, K to end of rnd.

Rnds 3-5 (MC): As rnd 1.

Rnd 6 (CC): Using CC, K to end of rnd.

Rnd 7 (CC): Sl1p wyib, K to end of rnd.

Rnds 8-10 (MC): As Rnds 1-3.

Rnd 11: [K1CC, K2MC, K1CC, K2MC, K1CC, K7MC, K1CC, K2MC, K1CC, K2MC] to end of rnd.

Rnd 12: [K1MC, K1CC, K2MC, K1CC, K2MC, K1CC, K5MC, K1CC, K2MC, K1CC, K2MC, K1CC] to end of rnd.

Rnd 13: [K2MC, K1CC, K2MC, K1CC, K2MC, K1CC, K3MC, K1CC, K2MC, K1CC, K2MC, K1CC, K1MC] to end of rnd.

Rnd 14: [K3MC, K1CC, K2MC, K1CC, K2MC, K1CC, K1MC, K1CC, K2MC, K1CC, K2MC, K1CC, K2MC] to end of rnd.

Rnd 15: [K4MC, K1CC, K2MC, K1CC, K2MC, K1CC, K2MC, K1CC, K2MC, K1CC, K3MC] to end of rnd.

Rnd 16: [K1CC, K4MC, K1CC, K2MC, K1CC, K3MC, K1CC, K2MC, K1CC, K4MC] to end of rnd.

Rnd 17: [K2CC, K4MC, K1CC, K2MC, K1CC, K1MC, K1CC, K2MC, K1CC, K4MC, K1CC] to end of rnd.

Rnd 18: [K1CC, K6MC, K1CC, K2MC, K1CC, K2MC, K1CC, K6MC] to end of rnd.

Rnd 19: [K4MC, K1CC, K3MC, K1CC, K3MC, K1CC, K3MC, K1CC, K3MC] to end of rnd.

Rnd 20: [K3MC, K3CC, K3MC, K1CC, K1MC, K1CC, K3MC, K3CC, K2MC] to end of rnd.

Rnd 21: [K4MC, K1CC, K5MC, K1CC, K5MC, K1CC, K3MC] to end of rnd.

Rnds 22-24 (MC): As Rnd 1-3.

Rnds 25-26 (CC): As Rnds 6-7.

Rnds 27-28 (MC): As Rnds 1-2.

Rnds 29-30 (CC): As Rnds 6-7.

Rnds 31-33 (MC): As Rnds 1-3.

Rnd 34: As Rnd 21.

Rnd 35: As Rnd 20.

Rnd 36: As Rnd 19.

Rnd 37: As Rnd 18.

Rnd 38: As Rnd 17.

Rnd 39: As Rnd 16.

Rnd 40: As Rnd 15.

Rnd 41: As Rnd 14.

Rnd 42: As Rnd 13.

Rnd 43: As Rnd 12.

Rnd 44: As Rnd 11.

Rnds 45-47 (MC): As Rnds 1.

Rnds 48-49 (CC): As Rnds 6-7.

SECTION 4

For this section, hold MC dominant.

Rnd 1 (MC): Using MC, K to end of rnd.

Rnd 2 (MC): Sl1p wyib, K to end of rnd.

Rnds 3-5 (MC): As Rnd 1.

Rnd 6 (CC): Using CC, K to end of rnd.

Rnd 7 (CC): Sl1p wyib, K to end of rnd.

Rnd 8: [K1MC, K3CC, K1MC, K2CC] to end of rnd.

Rnd 9: [K1CC, K1MC, K1CC, K1MC, K3CC] to end of rnd.

Rnd 10: [K2CC, K1MC, K2CC, K2MC] to end of rnd.

Rnd 11: As Rnd 9.

Rnd 12: As Rnd 8.

Rnds 13-14 (CC): As Rnd 6.

Rnds 15-16 (MC): As Rnds 1-2.

Rnds 17-18 (CC): As Rnds 6-7.

Rnd 19 (CC): As Rnd 6.

Rnd 20: [K3CC, K1MC, K3CC] to end of rnd.

Rnd 21: [K2CC, K3MC, K2CC] to end of rnd.

Rnd 22: [K1CC, K5MC, K1CC] to end of rnd.

Rnd 23: As Rnd 21.

Rnd 24: As Rnd 20.

Rnds 25-27 (CC): As Rnd 6.

Rnd 28-29 (MC): As Rnds 1-2.

Rnds 30-31 (CC): As Rnds 6-7.

Rnd 32: [K2CC, K2MC] to end of rnd.

Rnds 33-34 (CC): As Rnd 6.

Rnd 35: [K2MC, K2CC] to end of rnd.

Rnds 36-37 (CC): As Rnd 6.

Rnds 38-43: As Rnds 32-37.

Rnd 44: As Rnd 32.

Rnds 45-46 (CC): As Rnd 6.

SECTION 5

For this section, hold CC dominant.

Rnd 1 (MC): Using MC, K to end of rnd.

Rnd 2 (MC): Sl1p wyib, K to end of rnd.

Rnds 3-5 (MC): As rnd 1.

Work [Section 1: Rnds 5-30] one time.

Work [Section 1: Rnds 7-17] one time.

SECTION 6 - 8

Work [Section 2 - Section 4] one time.

SECTION 9

Work [Section 5] one time.



SECTIONS 10 - 11

Work [Section 2 - Section 3] one time.

SECTION 12

Work [Section 4: Rnds 1-45] one time. Leaving all 140 live sts on your needles, break MC and weave in tail. Break CC, leaving a 150" (381 cm) tail for grafting in the final step.

FINISHING

Before grafting, make sure to weave in any remaining tails on the inside of the cowl. After grafting, you will no longer be able to access these tails.

Using your smaller circular needles, pick up all of the provisional CO sts and remove the scrap yarn. Weave in the MC tail from the provisional CO.

You should now have 140 live sts on the smaller circular needles (CO edge) and 140 live sts on the larger circular needles (BO edge). Holding these two sets of circular needles parallel, use the 150" (381 cm) CC tail to graft the CO and BO edges of your cowl together in the round using kitchener stitch.

Once all sts are grafted, weave in your remaining ends and wet-block your cowl.

Enjoy!


Annelise Driscoll Gingrow
Grey Cap Knits

CHARTS

Key

 MC

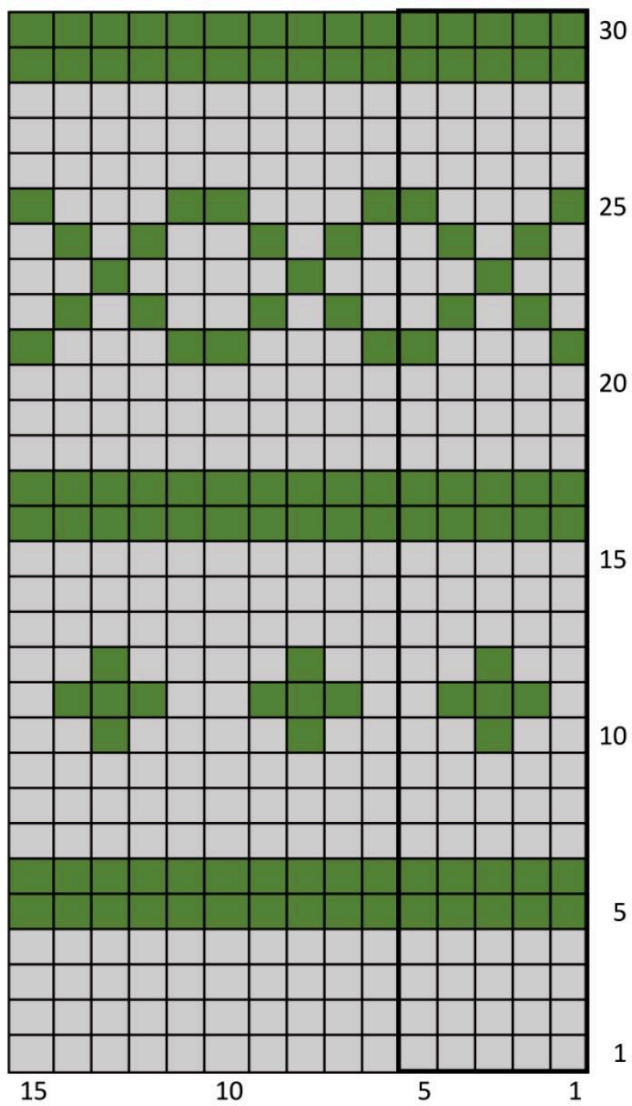
 CC

 Pattern Repeat

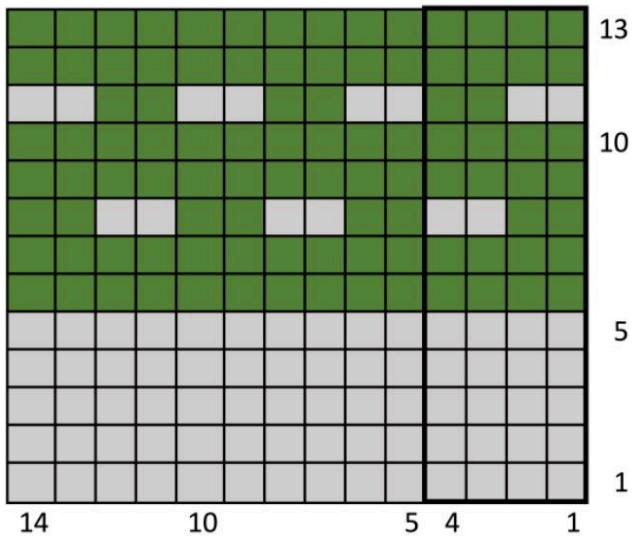
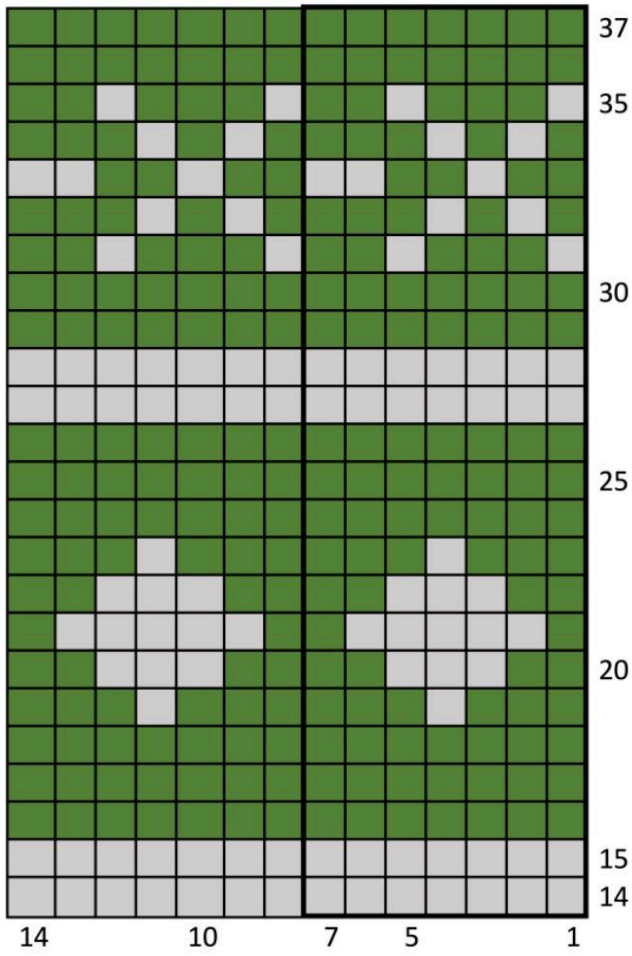
Please note: The charts solely show the colorwork reps. With the charts, you still need to keep track of their place in the written pattern to follow pattern repeats. For example, Rounds 7-17 of Section 1 have a repeat, and Sections 5-12 are all repeats of pre-existing sections/charts.

The slip stitches that are notated at the beginnings of the written pattern Section 1: Rnd 6 & 8 and Sections 2-4: Rnds 2 & 7, etc. are optional, and were only included in the written pattern to help mitigate the jog at the beginning of solid color-change rounds.

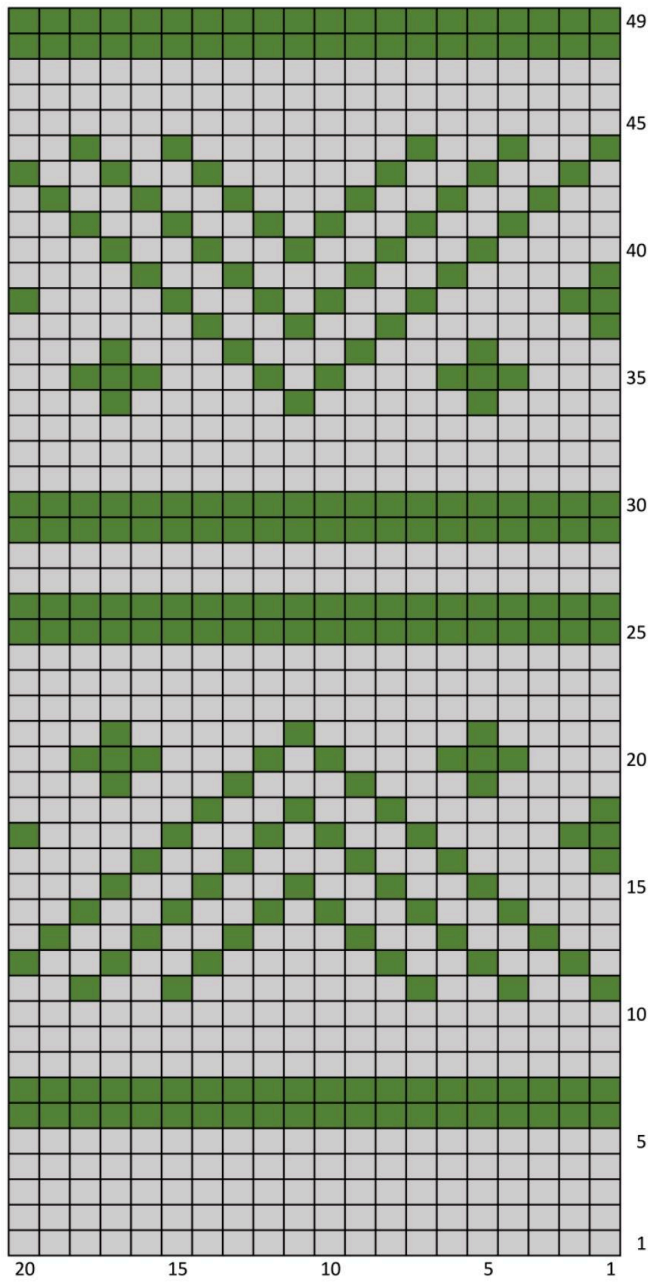
Section 1



Section 2



Section 3



Section 4

