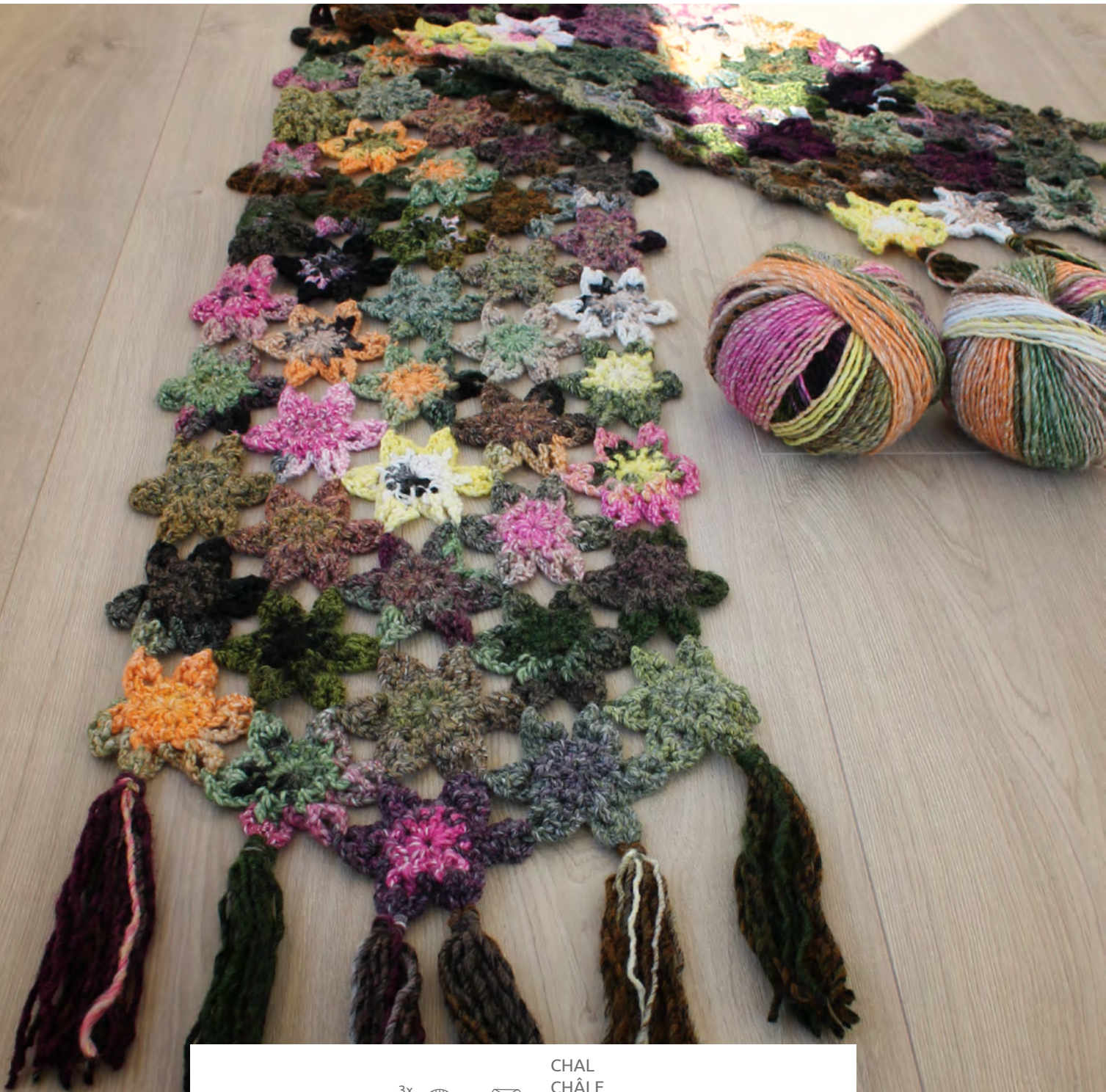




AZTECA CROCHET FLOWERS SHAWL

ATTY VAN NOREL



CHAL
CHÂLE
SHAWL
BLOEMENJAAL
BLUMENSCHAL
SHAWL









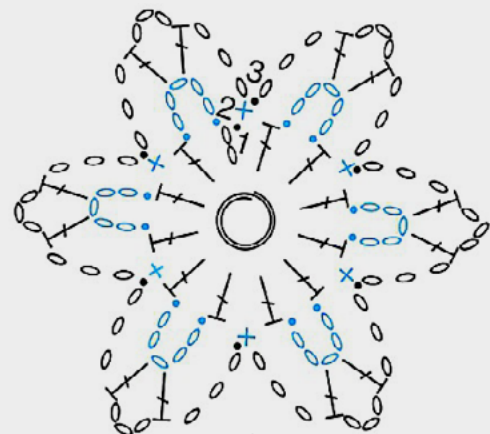
Katia

Katia®





GRAPH



- 0 chain
- Slipstitch
- + Single crochet
- T Double crochet

AZTECA CROCHET FLOWERS SHAWL

@ATTYSLOVEFORCROCHET

MATERIALS

3 balls of Katia Azteca col. 7869
Size 6mm (USA J10)
Crochet hook

MEASUREMENTS

180cm (without fringes) x 42cm approx.

ABBREVIATIONS US TERMS

beg: beginning
st: stitch/stitches
sl st: slip stitch
ch: chain
sc: single crochet
dc: double crochet
ch-sp: chain space
R: Round

INSTRUCTIONS

Make a magic ring or 3ch and close with sl st in 1stch to form ring.

R1: 2ch (=1dc), 11dc in ring, close with sl st in 2ndch from beg. (12dc)

R2: sl st between the 2ch and 1dc from R1, 5ch, sl st between same st, 1sc between next 2st, [sl st between next 2st, 5ch, sl st between same 2st, 1sc in between next 2st] repeat 4 times.

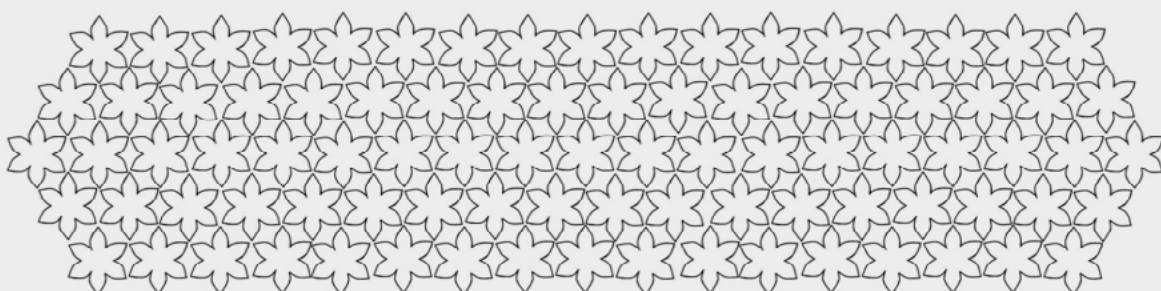
R3: [3ch, 1dc in 5ch-sp, 3ch, 1dc in same 5ch-sp, 3ch, sl st in sc from R2] repeat 5 more times. Cut yarn and work away end.

JOINING

All motifs are joined together as-you-go in the 3ch-sp (top of the petals) as follows: after the 1stch of the 3ch-sp, remove hook from loop and insert hook in any 3ch-sp of a finished motif, pick up loop again and pull through, work 1ch (= forming a sl st), continue in pattern by working 1ch, 1dc in same 5ch-sp, 3ch, sl st in sc from round 2, etc. Join all 3ch-sp where necessary. When you join 2 motifs in ch-sp that are already joined, make sure to insert hook in same ch. See schematic below.

FRINGES

Per fringe cut 10 threads of 40cm and knot through the 3ch-spaces on the short sides.





Katia