



CROCHET PATTERN

Strawberry

Bum Bag

Design: Crocheted It | Hobbii Design




MATERIALS

Friends Cotton 8/8

2 skeins of color 53
1 skein of color 54
1 skein of color 100

Crochet hook 3.5 mm / US E/4
Stitch marker

YARN QUALITY

 **Friends Cotton 8/8**, Hobbii
100 % Cotton
50 g / 1.75 oz = 75 m / 82 yds

GAUGE

Across first 5 rounds = 5.5 cm / 2.15"

ABBREVIATIONS

ch = chain
sc = single crochet
hdc = half double crochet
dc = double crochet
fl = front loops
bl = back loops
dec = decrease
RS = right side
WS = wrong side
rsc = reverse single crochet (also known as crab stitch)

SIZE

One size

MEASUREMENTS

Width: 15 cm / 6"
Length: 35 cm / 14"

PATTERN INFORMATION

If you are familiar with the usual techniques such as the magic ring, making granny squares and basic crochet stitches, the pattern should not be a problem for you.

HASHTAGS FOR SOCIAL MEDIA

#hobbiidesign #hobbiigrannysquaremonth
#hobbiistrawberry

BUY THE YARN HERE

<https://shop.hobbii.com/strawberry-bum-bag>

QUESTIONS

If you have any questions regarding this pattern, please feel free to email us at support@hobbii.com

Please make sure to include the pattern's name and number.

Happy Crafting!

Pattern



MOTIF

Make 4

Using color 54 6 sc into a magic ring (6 sts)

Round 1 (RS): 1 ch, *2 sc in next st, work from * 6 times, join with sl st. (12 sts)

Round 2 (WS): 1 ch, 1 hdc into first st, 4 dc in next st, [1 hdc, 1 sc] in next st, 1 sc, 2 sc in next st, 2 hdc, 2 sc in next st, 1 sc, [1 sc, 1 hdc] in next st, 4 dc in next st, 1 hdc, join with sl st in top of first hdc. (22 sts)

Round 3: 1 ch, 2 sc, *[2 sc] in next 3 sts, 5sc, [1 sc, 1 dc] in next st, 1 ch, [1 dc, 1 sc] in next st, 5 sc, 2 sc in next 3 sts, pm in last st made (for leaf placement), 2 sc, join with sl st to first sc, fasten off color 54. (31 sts)

Round 4: Work in bl, with colour 53 sl st join to ch1-sp from round 3, 2 ch, miss 3 sts, 3 dc in next st, 2 ch, 3 dc in next st, miss st, 1 hdc, 2 sc, miss st, 3 hdc in next st, ch 2, 3 hdc in next st, miss 2 sts, 3 hdc, miss st, 3 hdc in next st, ch 2, 3 hdc in next st, miss st, 2 sc, 1 hdc, miss st, 3 dc in next st, ch 2, 3 dc in next st, 1 ch, miss 3 sts, sl st in beg ch 2. (44 sts)

Round 5: 1 ch, sc 2 in 2 ch-sp, 3 sc, [1 hdc, 1 ch. 1hdc] in next st, 9 sc, [1 hdc, 1 ch, 1 hdc] in next st, 9 sc, [1 hdc, 1 ch. 1hdc] in next st, 9 sc, [1 hdc, 1 ch, 1 hdc] in next st, 4 sc, join with sl st. (47 sts)

Rounds 6-9: *Sc to 2 ch-sp, [1 hdc, 1 ch, 1 hdc] in next st, work from * 3 times, sc to end, fasten off. (72 sts)

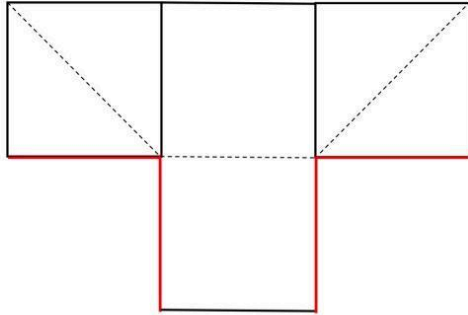
STRAWBERRY BORDER/LEAF

Round 1: With colour 100, sl st join to fl of 4th st of round 3, (work in fl for this round) rsc in next 4 sts, 4 ch, rsc in next 4 sts, fasten off colour 100, join in next st with colour 54, rsc in each st to end, fasten off.

JOINING ORDER

- Place a maker in the centre sc of 1 corner of the granny square, repeat this for a second granny square.

- Arrange squares into joining order, assuring all are facing the same direction. Place the two granny squares with marker on either side with marker st in the top outwards corner.
- With right sides of motifs held together, ss 2 squares together at a time using FL of closest square and BL of farthest square, until all squares have been joined.
- Turn the bag so that the right side of squares are facing outside, and seams are on the inside.



Red line = Join line

Dotted line = Fold line

BORDER

Row 1: With right sides of motifs facing, re-join yarn to any st, sc in next st and each st around moving marker up each row.

When crocheting row 3, stop above the centre strawberry top and miss st, ch1 (button hole made) and continue to sc around.

Rows 2-4:

Sc in next st and each st around, ss to join to previous row. Fasten off.

HANDLE

Row 1: 10 ch, sc in next 9 sts, 1 ch, turn, place marker in 4th sc (9 sts)

Row 2: Dec over next 2 sts, 5 sc, dec over last 2 sts (7 sts)

Row 3: Dec over next 2 sts, 3 sc, dec over last 2 sts (5 sts)

Rows 4-136: Sc in each st across

Row 137: 2 sc in next st, 3 sc, 2 sc in last st (7 sts)

Row 138: 2 sc in next st, 2 sc, sc in next st and place marker, 2 sc, 2 sc in last st, fasten off.

Sew handle to either side of the bag, line each marker up and sew across all 9 sts. Sew a button to the inside of the bag on Row 3 of the Border central to the bag opposite the buttonhole.

Enjoy!

Sandy Jones / Crocheted it