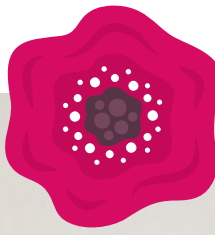




FLOWERLAND

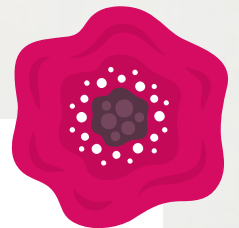
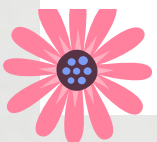
@attysloveforcrochet

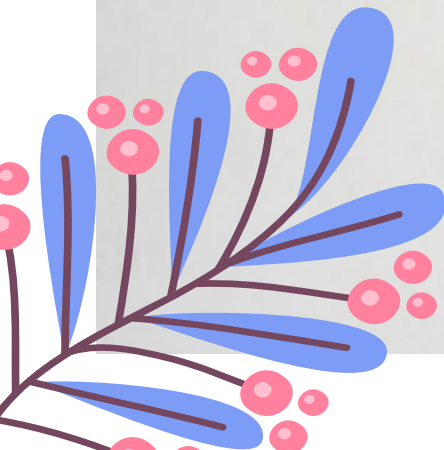
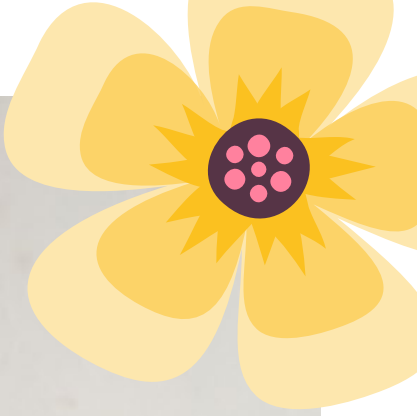




FLOWERLAND

@attysloveforcrochet







EN FLOWERLAND SHAWL

Designed by @attysloveforcrochet

MATERIALS

CAPRI: 4 balls ivory col. 82145
 1 ball each of: blue grey col. 82178, dark green col. 82179,
 yellow col. 82180, light orange col. 82181, raspberry col. 82182,
 dark orange col. 82183

Crochet hook: E4 (U.S.)/(3.5 mm)

Stitches

*Chain st, slip st, double crochet, triple crochet, double triple
 crochet, fringes, magic ring
 Flower (see graphs A & C)
 Making up (see graph B)
 Full shawl (see graph D)*

See basic stitches at: www.katia.com/en/academy

GAUGE

Using the size E4 hook:
 1 flower = 5 7/8" x 5 7/8" (15x15cm) approx.

INSTRUCTIONS

Note: All the flowers are made the same using the desired colour combinations, **except** the last row which is **only** worked in ivory.

1st flower: work the *flower*, following graph A, in the following manner:

With the chosen colour (= raspberry following graph A), make a *magic ring* and work the **1st** and **2nd** row with the same colour, **cut** yarn and **fasten off**.

3rd row: **change** to another colour (= dark green following graph A) and start in the row indicated, folding the 19 *chain st* space on 2nd row of raspberry towards the front (**note:** this row



is worked at back of 2nd row). **Cut** yarn and **fasten off**.

4th row: change to another colour (= yellow following graph A) and start in the row indicated folding the 19 *chain st* space on 2nd row of raspberry towards the back (**note:** this row is worked in the middle of the 4 *double crochet* on the 3rd row, and in front of 2nd row). **Cut** yarn and **fasten off**.

5th row: This row is **always** worked in ivory, and in the 19 *chain sts* on the 2nd row and in the *chain st* space on the 4th row. **Cut** yarn and **fasten off**.

Work a total of 45 *flowers* (see graph D for the colour combination of the photographed shawl), **changing** the colours on the same rows.

From the 2nd *flower*, start **joining** the *flowers* on the last row by working the *chain st join* in the 3 *chain st* space and the 5 *chain st* space on the last row in the following manner: after arriving at the middle of the group of *ch sts* for **joining**, remove hook from *st* and insert the hook in one of the *chain sts* on the finished *flower*, pass the previous *chain st* through the *chain st* on the finished *flower*. Continue with the row until the other *chain st* group for **joining**, following graph B.

Join all the *flowers* following graph D.

Half flower: work the *half flower* in the same manner, following graph C, and **changing** the colours on the same rows.

Work a total of 10 *half flowers*.

Join the *half flowers* in the same manner as the full ones, following graph D.

FINISHING (MAKING UP)

Fringes: with ivory, **cut** 220 strands, each one measuring 11 3/4" (30cm) long. Make 22 *fringes*, each one made up of 10 strands, and attach around the shawl following graph D.

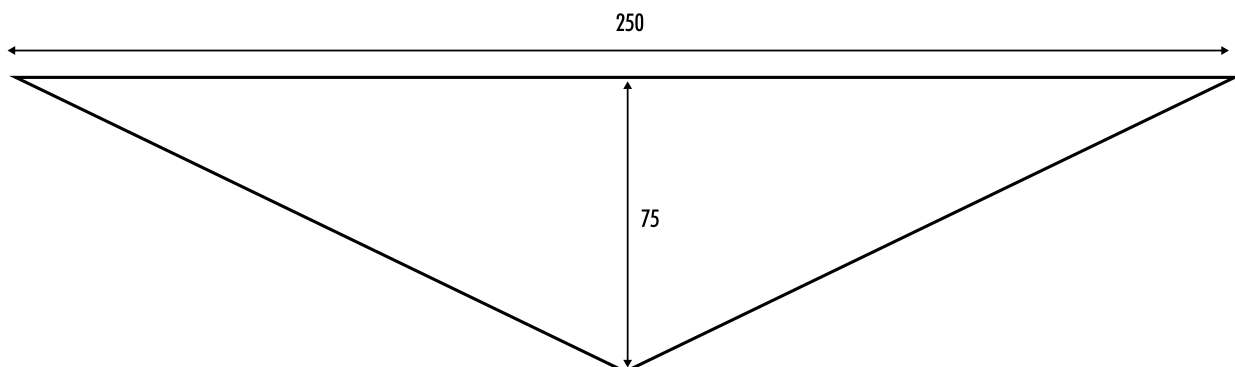
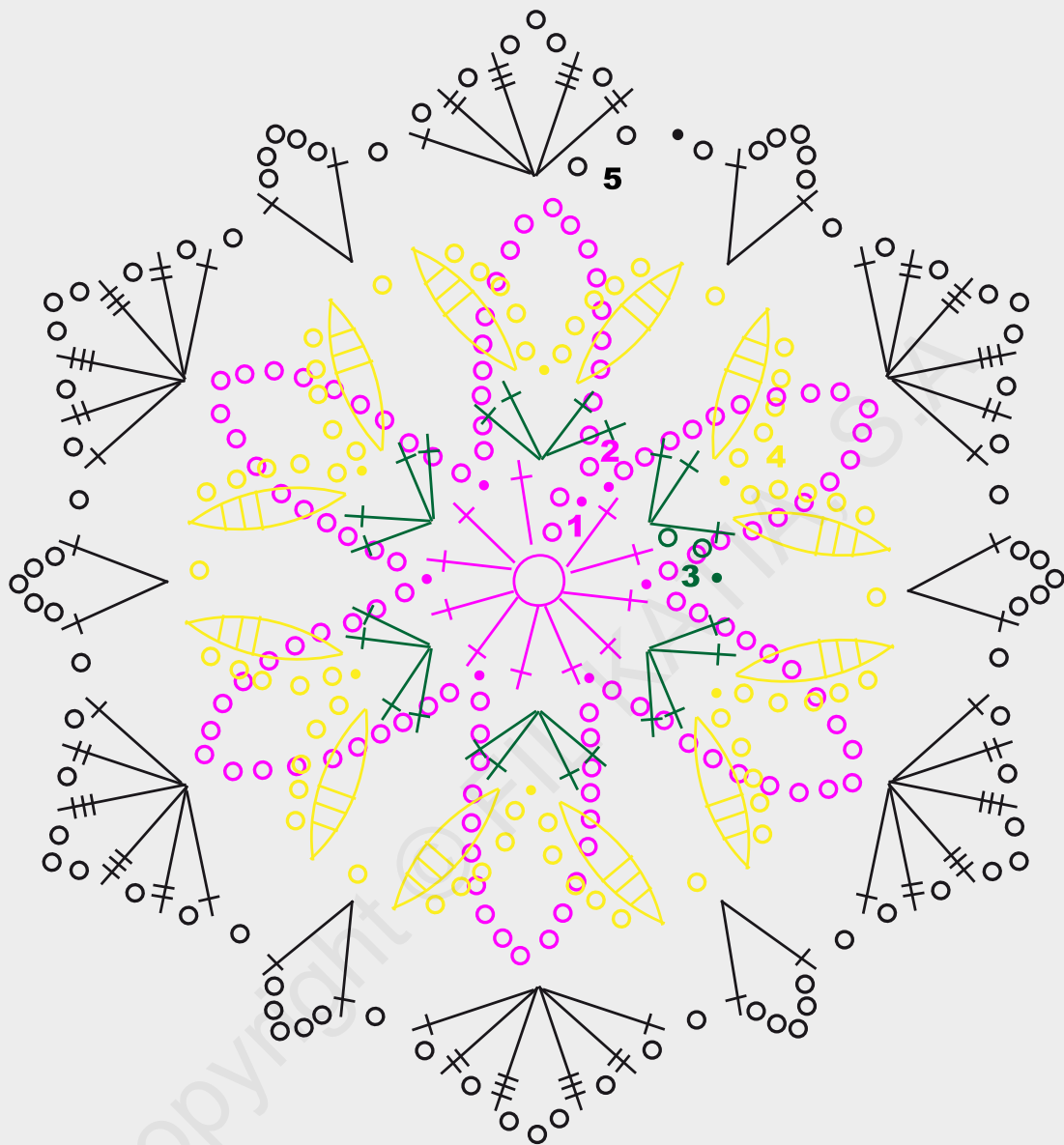


GRÁFICO A / GRAPHIQUE A / GRAPH A / GRAFIEK A / HÄKELSCHRIFT A / GRAFICO A



- 1 p. enano / 1 m. coulée / 1 slip st / 1 halve vaste / 1 Kettm. / 1 m. bassissima
- 1 p. de cadeneta / 1 m. chaînette / Chain 1 st / 1 losse / 1 Luftm. / 1 catenella
- † 1 p. alto / 1 bride / 1 Double crochet / 1 stokje / 1 Stäbchen / 1 m. alta
- ‡ 1 p. alto doble / 1 double bride / 1 triple crochet / 1 dubbel stokje / 1 Doppelstäbchen (DStb.) / 1 m. alta doppia
- ≡ 1 p. alto triple / 1 quintuple bride / 1 double triple crochet / 1 driedubbel stokje / 1 Dreifachstb. / 1 tripla m. alta
- ⌋ 2 p. altos triples cerrados juntos / 2 triples-brides terminées ensemble / 2 double triple crochet closed together / 2 driedubbele stokjes samen afhaken / 2 Dreifachstäbchen zusammen abmaschen / 2 m. alte triple chiuse assieme

GRÁFICO B / GRAPHIQUE B / GRAPH B / GRAFIEK B / HÄKELSCHRIFT B / GRAFICO B

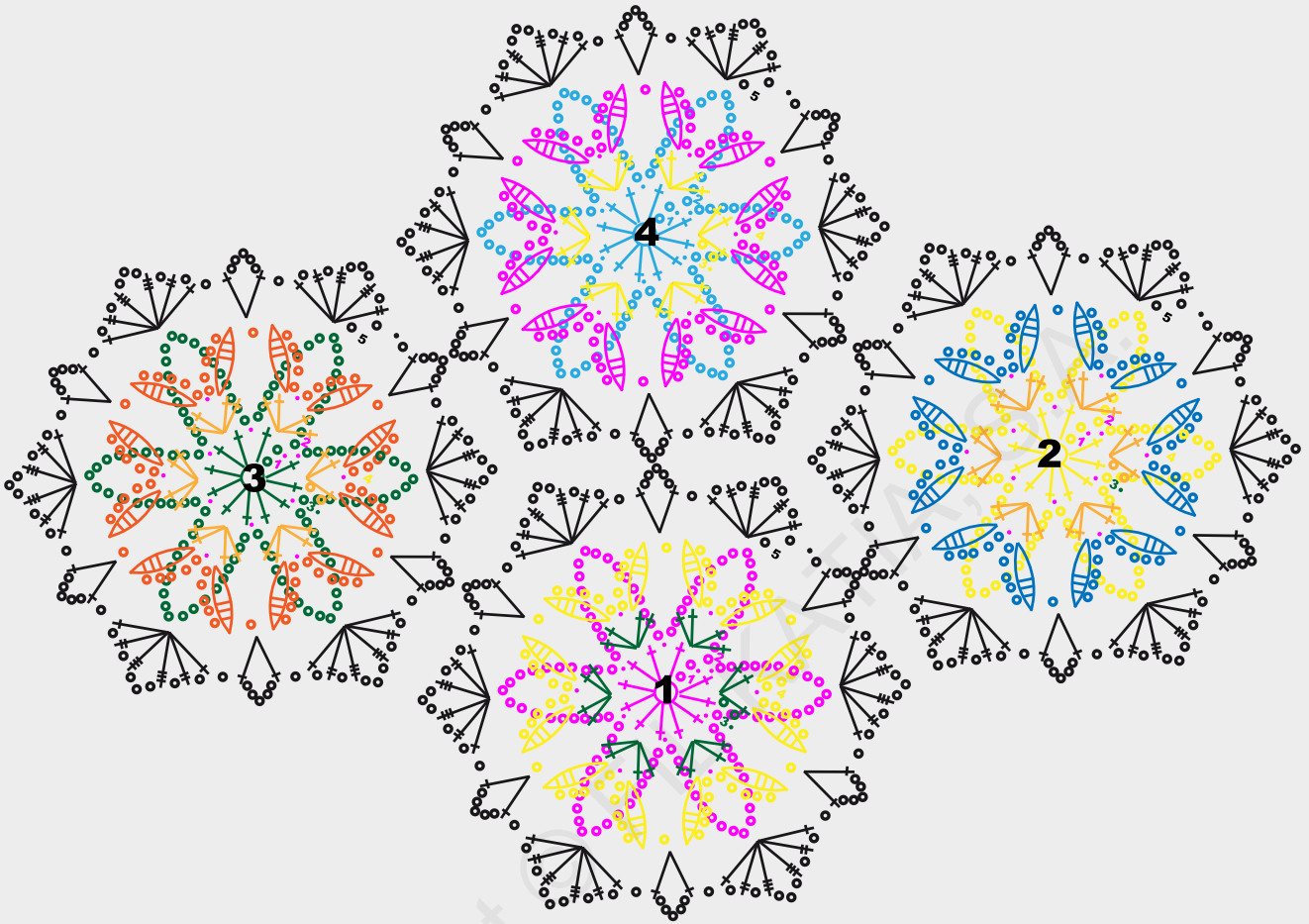


GRÁFICO C / GRAPHIQUE C / GRAPH C / GRAFIEK C / HÄKELSCHRIFT C / GRAFICO C

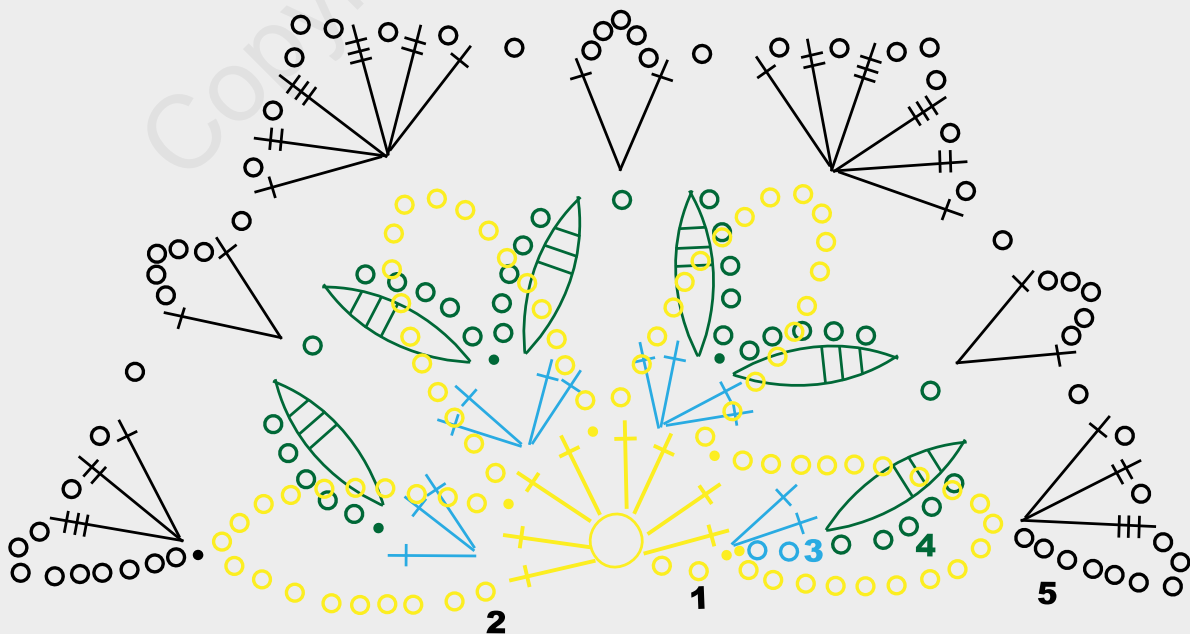


GRÁFICO D / GRAPHIQUE D / GRAPH D / GRAFIEK D / HÄKELSCHRIFT D / GRAFICO D

