



CROCHET PATTERN

# Scary

Purse

Design: Giulia Introzzi @zullacrocheted | Hobbii Design

## MATERIALS

### Friends Cotton 8/4

A: 1 skein of White (01)

B: 1 skein of Cranberry (42)

Crochet hook 3.0 mm

Scissors

Darning needle

Tape measure

## YARN QUALITY

 Friends Cotton 8/4, Hobbii

100% cotton

50 g = 160 m

## GAUGE

Gauge 10 x 10 cm / 4" x 4" = 22 sts x 22 rows.

*Check Info & Tip section for more gauge info*

## ABBREVIATIONS

st(s) = stitch(es)

ch = chain

slst = slip stitch

sc = single crochet

scblo = single crochet in back loop only

## SIZE

One size

## MEASUREMENTS

Height: 19 cm / 7.5" (base to top edge of the bucket purse)

Base diameter: 15 cm / 6"

Strap: 37 cm / 14.5"

## PATTERN INFORMATION

The must-have purse for trick or treat or just as a cool accessory! Small bucket purse worked with tapestry crochet technique to achieve a fake blood dripping effect from the top edge.

## HASHTAGS FOR SOCIAL MEDIA

#hobbiscary #hobbiidesign

## BUY THE YARN HERE

<https://shop.hobbii.com/scary-purse>

## QUESTIONS

If you have any questions regarding this pattern, please feel free to email us at [support@hobbii.com](mailto:support@hobbii.com).

Please make sure to include the pattern's name and number.

Happy Crafting!

# Pattern



## INFO AND TIPS

### Gauge swatch

With a 3mm hook

Ch 50 and join last ch to the first one, creating a circle

Ch 1, place 1 sc in every ch until the very last one, slst to first sc. (50)

Ch 1, sc in every st till end of row, slst to first sc. (50)

Repeat the last row for another 23 times and fasten off.

Measure the centre of your sample: you should have 22 sts x 22 rows = 10cm x 10cm square.

If you don't match gauge, change your hook size to the one that enables you to correctly meet gauge.

## BASE

With Color A, let's create the base for the purse:

- B1            Make a magic circle and place 6 sc in the centre of the circle, slst to first sc. Tight up the circle. (6)
- B2            Ch 1, 2 sc in each sc from previous row. (12)
- B3            Ch 1, \*sc 1, 2sc in next st\*, repeat \*to\* till end of row, slst to first sc. (18)
- B4            Ch 1, \*sc 2, 2sc in next st\*, repeat \*to\* till end of row, slst to first sc. (24)
- B5            Ch 1, \*sc 3, 2sc in next st\*, repeat \*to\* till end of row, slst to first sc. (30)
- B6            Ch 1, \*sc 4, 2sc in next st\*, repeat \*to\* till end of row, slst to first sc. (36)
- B7            Ch 1, \*sc 5, 2sc in next st\*, repeat \*to\* till end of row, slst to first sc. (42)

- B8 Ch 1, \*sc 6, 2sc in next st\*, repeat \*to\* till end of row, slst to first sc. (48)
- B9 Ch 1, \*sc 7, 2sc in next st\*, repeat \*to\* till end of row, slst to first sc. (54)
- B10 Ch 1, \*sc 8, 2sc in next st\*, repeat \*to\* till end of row, slst to first sc. (60)
- B11 Ch 1, \*sc 9, 2sc in next st\*, repeat \*to\* till end of row, slst to first sc. (66)
- B12 Ch 1, \*sc 10, 2sc in next st\*, repeat \*to\* till end of row, slst to first sc. (72)
- B13 Ch 1, \*sc 11, 2sc in next st\*, repeat \*to\* till end of row, slst to first sc. (78)
- B14 Ch 1, \*sc 12, 2sc in next st\*, repeat \*to\* till end of row, slst to first sc. (84)
- B15 Ch 1, \*sc 13, 2sc in next st\*, repeat \*to\* till end of row, slst to first sc. (90)
- B16 Ch 1, \*sc 14, 2sc in next st\*, repeat \*to\* till end of row, slst to first sc. (96)
- B17 Ch 1, \*sc 15, 2sc in next st\*, repeat \*to\* till end of row, slst to first sc. (102)

## BODY

- BD1 Ch1, scblo in every st from B17, slst to first sc. (102)
- BD2 Ch1, sc in every st till end of row, slst to first sc. (102)

Repeat BD2 for another 12 times until BD14.

From BD15 we will continue working as we did from BD2 to BD14 (ch 1, sc in every st till end of row, slst to first sc) but adding color B,, as in the chart on the last page of this document.

Every square represents one sc stitch and it's colored in white if the stitch has to be made with color A or in red if the stitch has to be made with color B.

The scheme includes 51 stitches, once you reach the 51<sup>st</sup>, go back to the first st of that same row and repeat it until the 51<sup>st</sup> stitch once again, then slst to the first sc of the row.

Continue for another 27 rows, until BD42. Do not fasten off.

## STRAP

From where you left off BD42, we will now continue working the strap as follows:

S1 Ch1, slst 5. (5)

S2 Ch1 & turn, sc in next 5 slst from previous row and continue placing 5 sc in next 5 sts from BD42. (10)

S3 Ch1 & turn, sc in every st till end of row. (10)



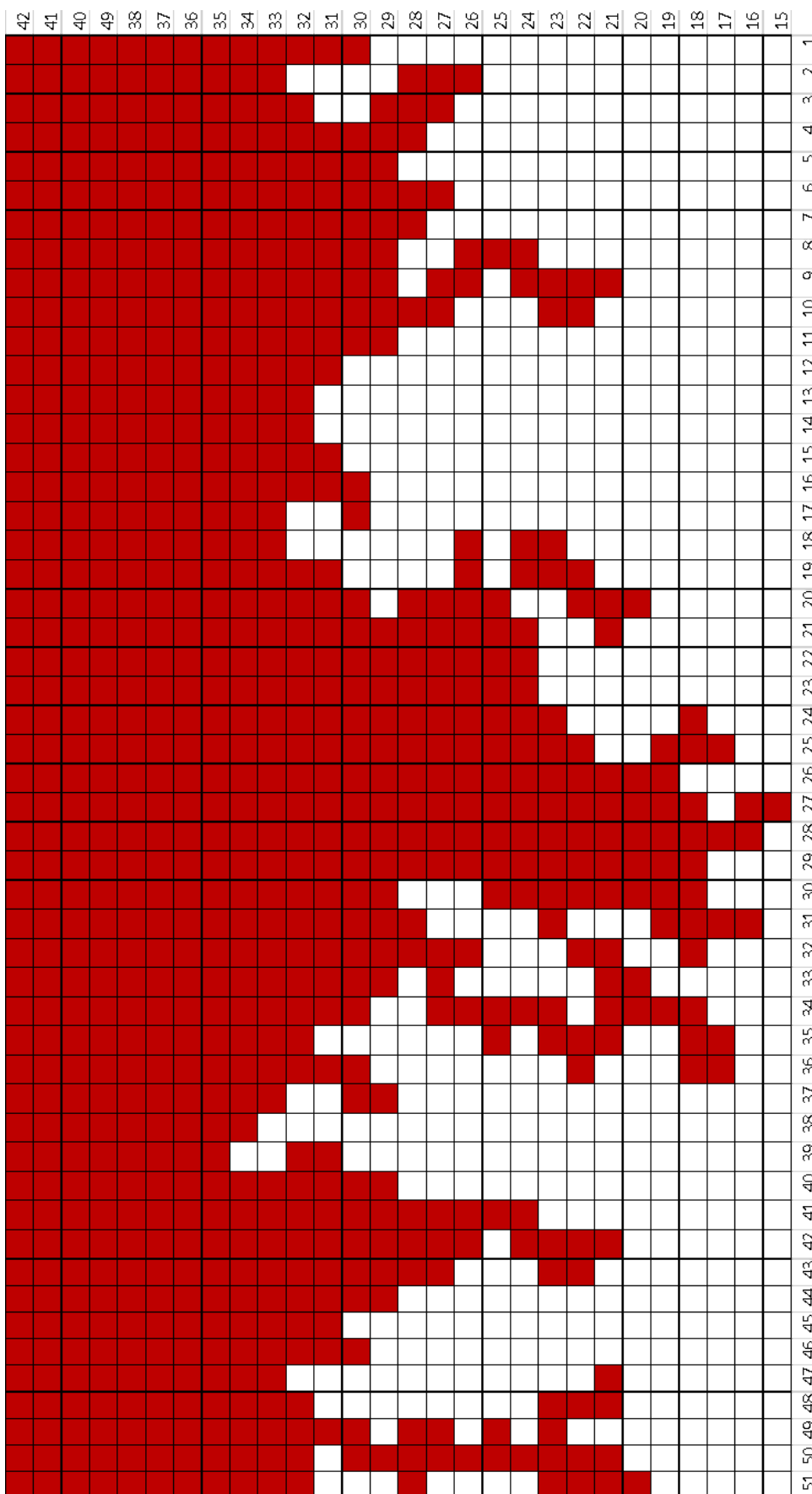
Continue repeating S3 until desired length (66 rows in total made for the sample in pictures).

Attach the last row of the strap to the purse body:

- Find sts from 47 to 56 of BD42 and marked them with a stitch marker.
- Make sure you work on the wrong side of your work and join each st of your strap to the stitches in between your stitch markers on BD42 (st 47 and 56 included). (10).  
Fasten off.

**Enjoy your new purse!**

Giulia



Working direction

