



CROCHET PATTERN

Blossom Robe

Dress

Design: Caroline Edal - Tarda Studio | Hobbii Design



MATERIALS

10 (12) 14 (16) 18 skeins of Friends Cotton
Silk col Oatmilk (03)

Crochet hook 2.5 mm
Darning Needle

YARN QUALITY

 **Friends Cotton Silk**, Hobbii
78% Cotton, 22% Silk
50 g = 120 m

GAUGE

10 x 10 cm / 4" x 4" = 22 dc x 13 r

ABBREVIATIONS

Ch = chain
Dc = double crochet
Sl st = slip stitch
... = repeat until end of round
*...*x = repeat x times

SIZE

XS (S) M (L) XL

MEASUREMENTS

Length: 86,5 (88) 89,5 (91) 92,5 cm (without
straps) / 34 (34.6) 35.2 (35.8) 36.4 inches
Width: 35 (40) 45 (50) 55 cm / 13.8 (15.7) 17.7
(19.7) 21.7 inches

PATTERN INFORMATION

The Blossom Robe Dress is worked
bottom-up using a hook size 2.5 mm. The
flower pattern is worked in double crochet
stitches according to a chart with symbols.

The dress has a negative ease of approx. 5
cm / 2 inches.

The model is wearing a size S.

HASHTAGS FOR SOCIAL MEDIA

#hobbiidesign #hobbiimagicalgarden
#hobbiiblossomrobe

BUY THE YARN HERE

<https://shop.hobbii.com/blossom-robe-dress>



QUESTIONS

If you have any questions regarding this pattern, please feel free to email us at
support@hobbii.com. Please make sure to include the pattern's name and number.

Happy Crafting!

Pattern

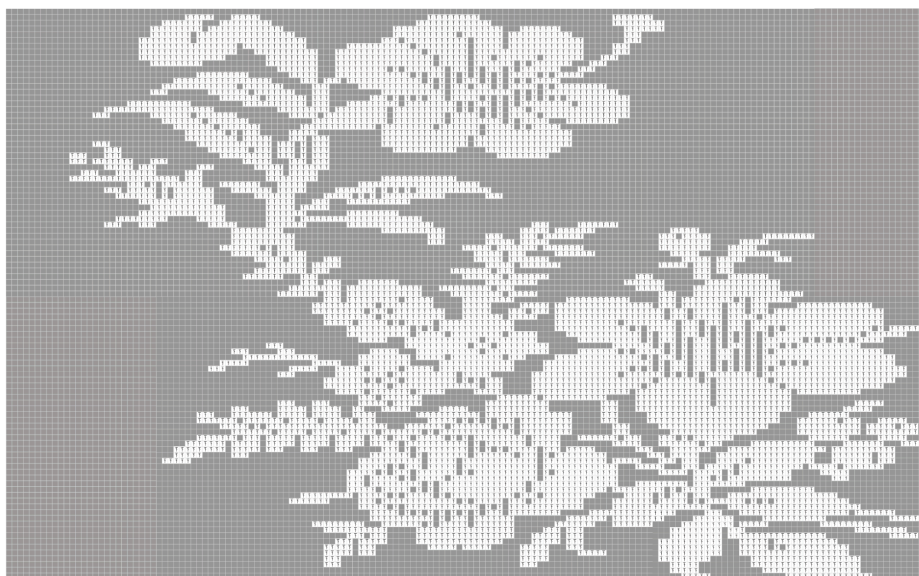


TIPS OG INFO

Blossom Robe is worked from the bottom-up. Below you can see the flower pattern worked in double crochet in a chart, which in the pattern is divided into smaller parts making it easier to keep an overview.

There are 6 parts in total. Throughout (including in the dc-chart) you will work alternately 1 dc and 1 ch, unless otherwise stated in the chart.

Double crochet chart:



BODY

Ch 170 (190) 210 (230) 250 sl st in first st to join.

Work 0 (2) 4 (6) 8 rounds of *1 dc, ch1*

NOTE! The first dc on each round is substituted with a ch3.

Start working the pattern in the dc chart.

Unless otherwise stated in the chart, you will work alternately 1 dc and ch1.

Start in the bottom right-hand corner of chart part 1.

Work *1 dc, ch1* after finishing the dc-chart until you reach the beginning of round. join with a sl st.

After working the entire chart, fasten off and cut yarn.

STRAPS

Start the straps of the dress, where you would like the straps to be placed.

Rounds 1-30 (32) 34 (36) 38: ch3 *ch1, 1 dc*x 5 (6) 7 (8) 9, turn.

Attach the strap to the back of the dress and make the second strap the same way.

Enjoy!

Caroline Edal, Tarda Studio



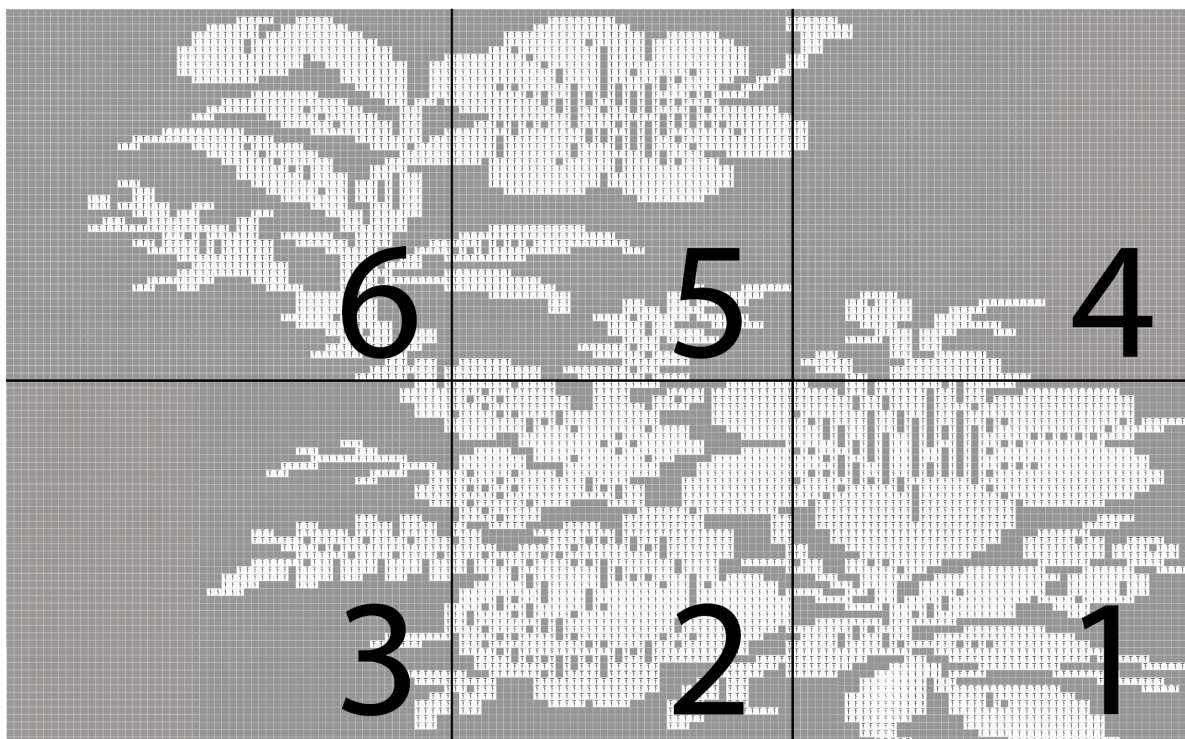


Chart - part 1:

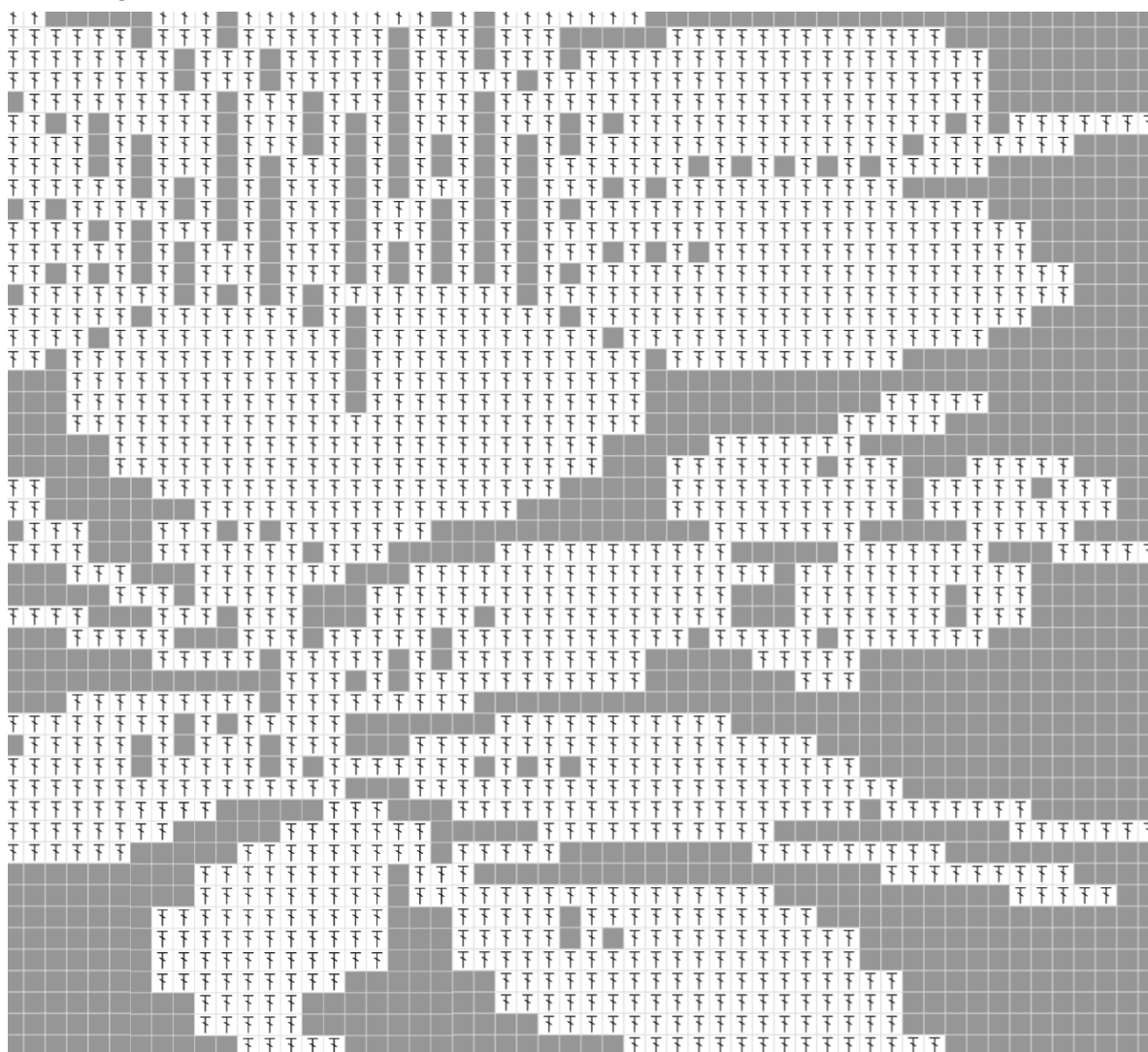


Chart - part 2:

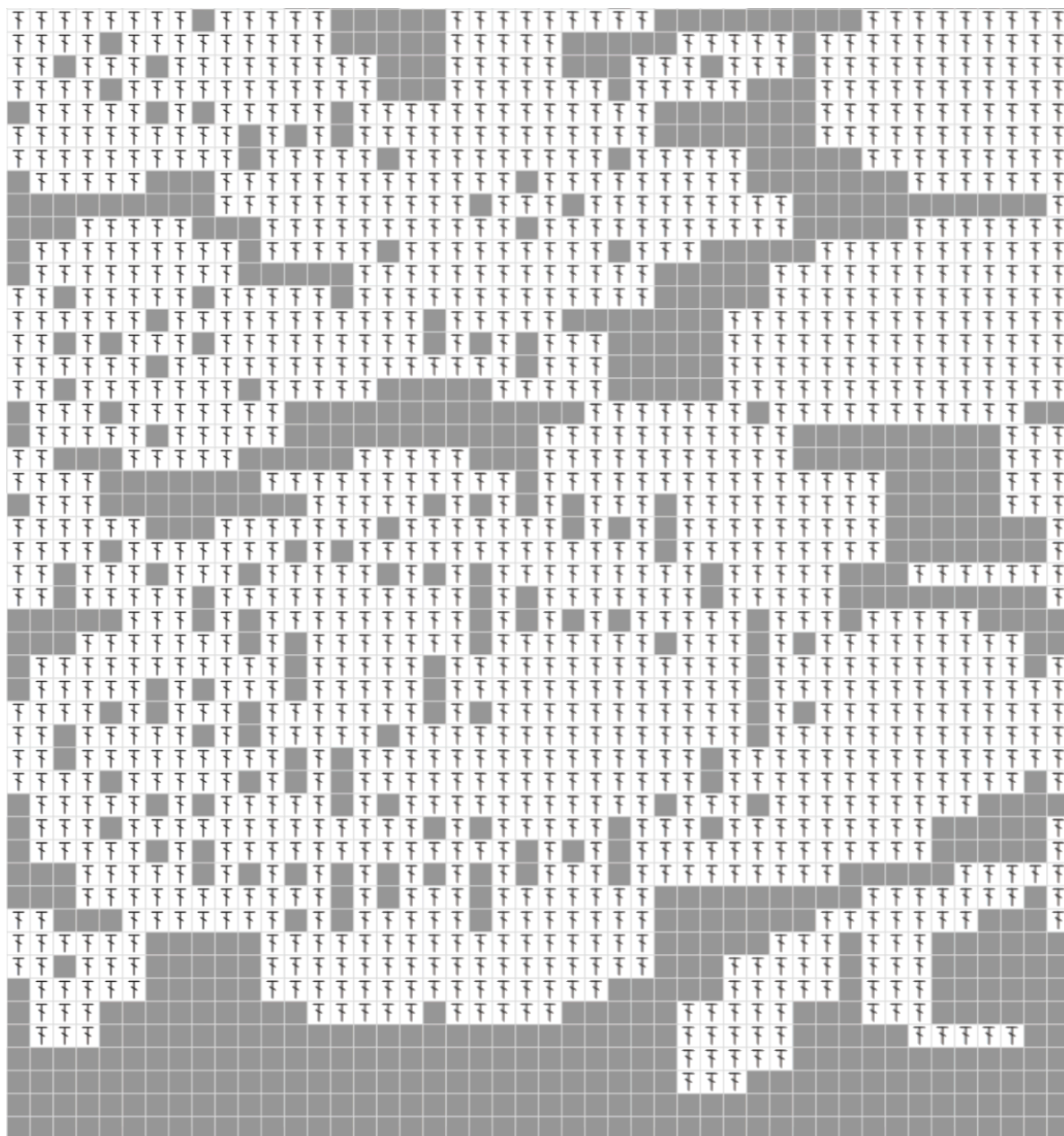


Chart - part 3:

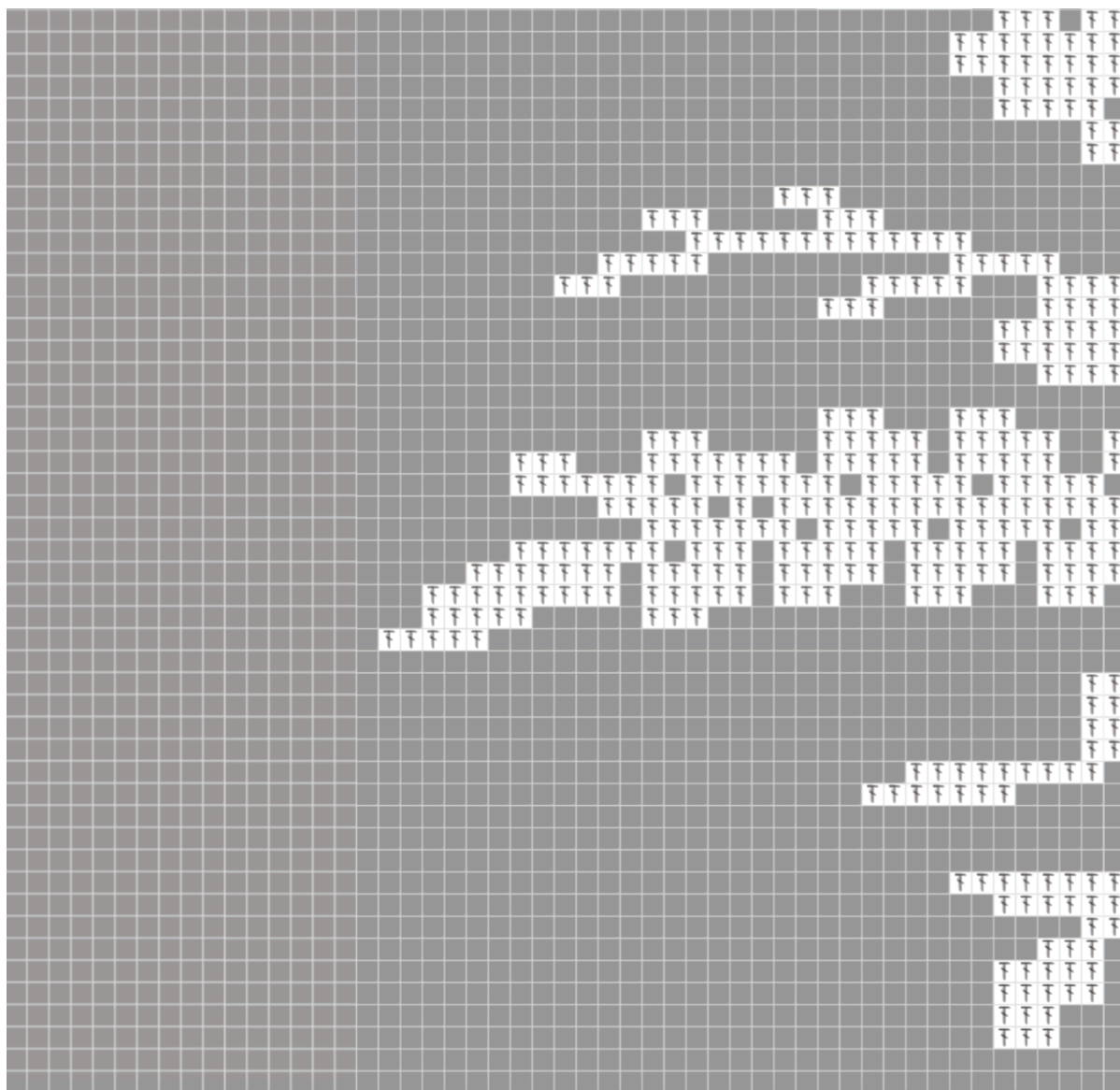


Chart - part 4:

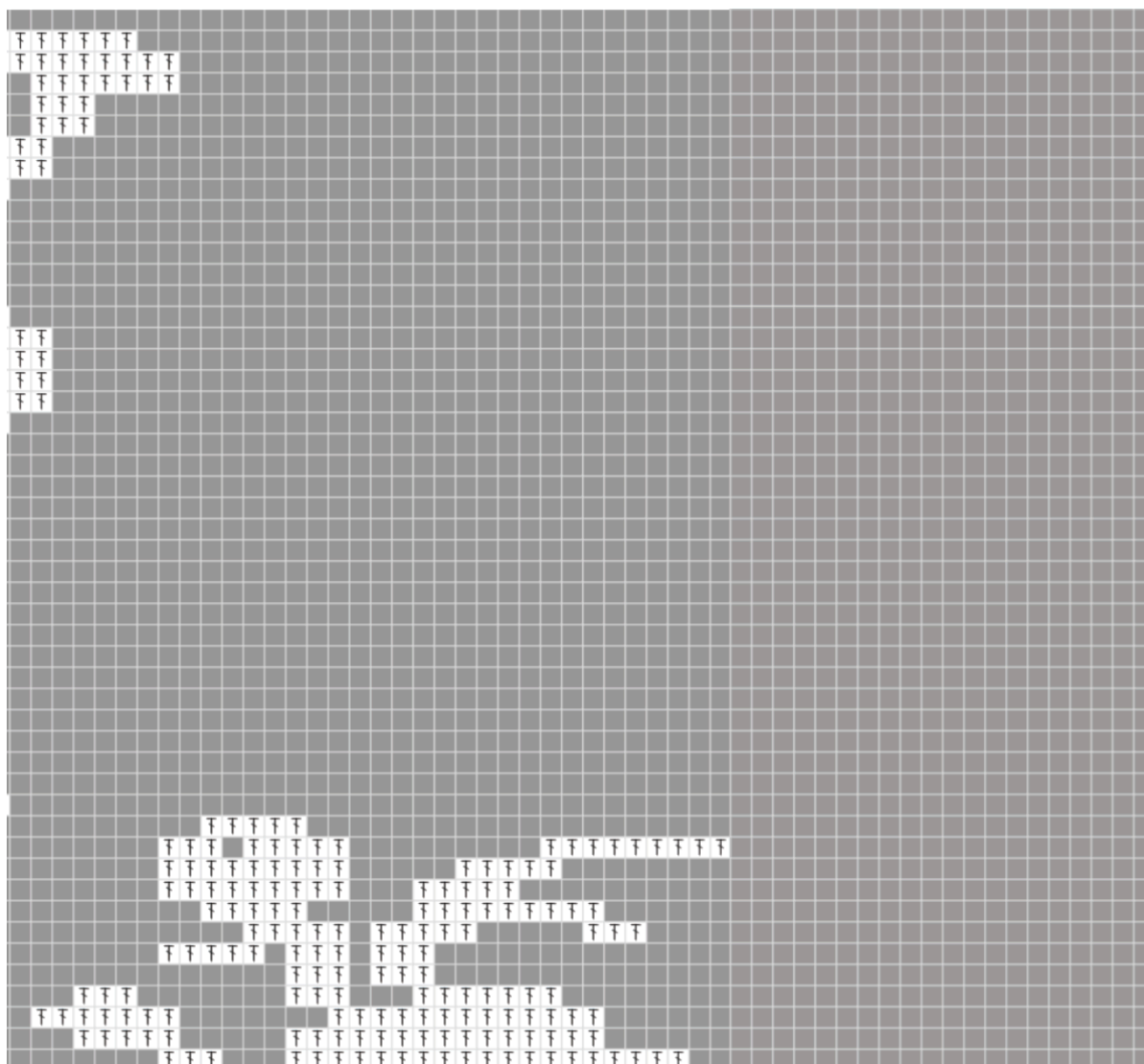


Chart - part 5:

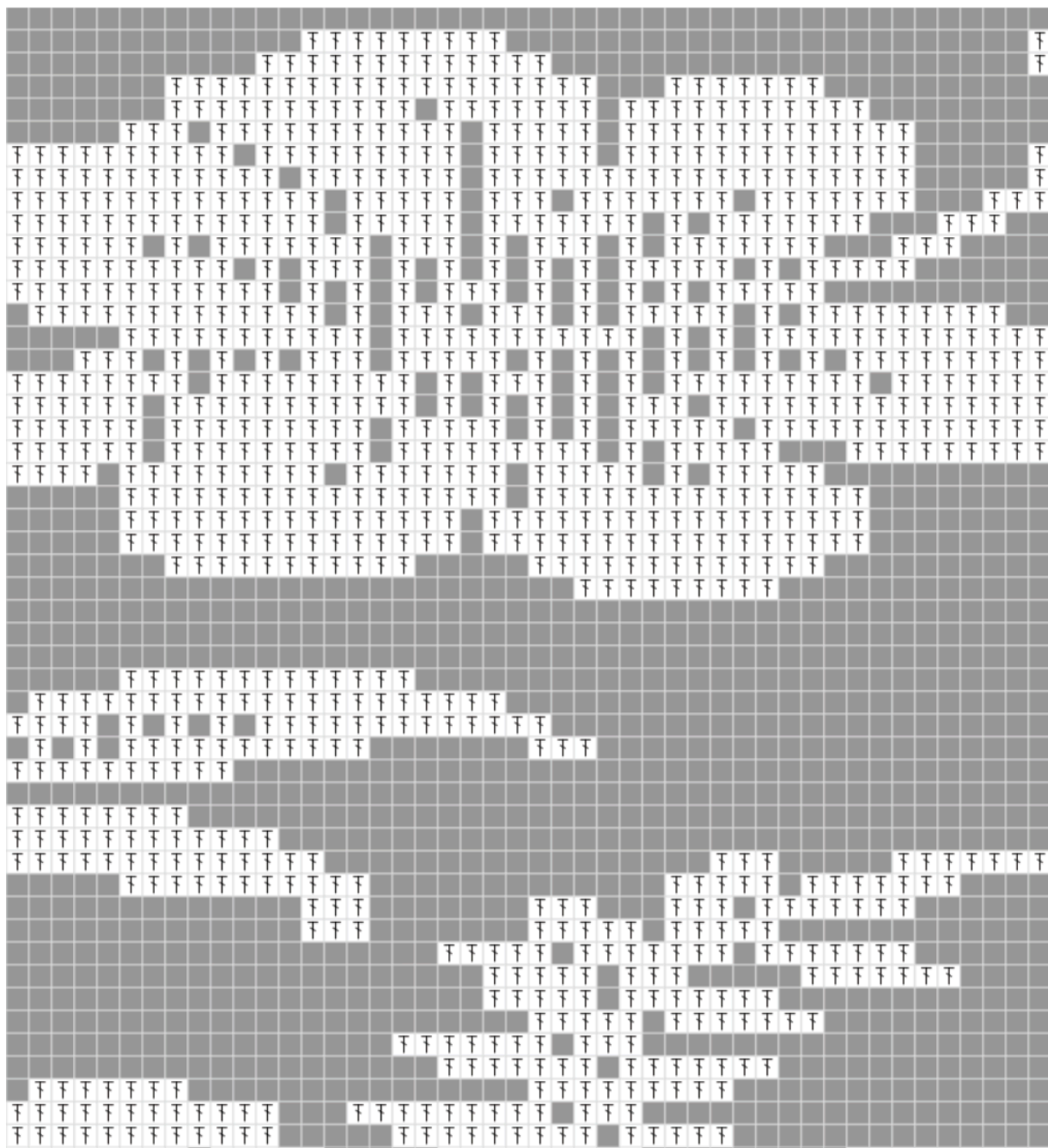


Chart - part 6:

