



KNITTING PATTERN

Cheynes

Beanie

Design: Knitwits and Yarns | Hobbii Design



MATERIALS

2 (2) 2 skeins of Friends Wool color 122
2 (2) 2 skeins of Friends Wool color 117

Circular needle 4.5 mm, 50 cm /US 7, 20"
Circular needle 5 mm, 50 cm /US 8, 20"
Stitch markers
Darning needle

YARN QUALITY

 **Friends Wool**, Hobbii

100% Wool

50 g / 1.75 oz = 100 m / 109 yds

GAUGE

22 sts x 26 rows = 10 cm x 10 cm / 4" x 4"
in pattern with 5mm (US 8) needles.

To knit a gauge swatch, refer to the color chart on page 5. Cast on 30 sts. Repeat the color chart from sts 1-6 a total of 5 times and a total of 20 rows.

To get st count, measure and count stitches over 10 cm (4").

To get row count, measure and count rows over 5cm (2.5") and multiply by 2.

HASHTAGS FOR SOCIAL MEDIA

#hobbii design #cheynesbeanie

#hobbii cheynes #knitwitsandyarnsxhobbii

BUY THE YARN HERE

<https://shop.hobbii.com/cheynes-beanie>

QUESTIONS

If you have any questions regarding this pattern, please feel free to email us at support@hobbii.com. Please make sure to include the pattern's name and number.

Happy Crafting!

SIZE

S (M) L

MEASUREMENTS

To Fit Head (circumference):

S – 49-54cm (19-21")

M – 54-59cm (21-23")

L – 59-64cm (23-25")

Finished Length (unfolded brim):

S/M/L – 25cm (10")

The yarn used and long tail cast on method provide a stretchy beanie with a large amount of negative ease.

PATTERN INFORMATION

Welcome to the Cheynes Beanie (pronounced chains). This beanie is a colorwork beanie that is suited towards beginner colorwork knitters. The pattern is knit in the round and provides an easy introduction to the world of colorwork. Cheynes is a small coastal town close to where I live in the Great Southern region of Western Australia. I felt like the chain-link feature in the middle of this pattern was the perfect inspiration when naming this beanie.

When knitting colorwork, it is important to relax when carrying the floats (the yarn at the back of the work). If the floats are too tight, they will not have enough room to stretch and although your beanie may look nice, it will not fit correctly.

Pattern



ABBREVIATIONS

MC = Main Color

CC = Contrast Color

CO = Cast On

Dec = Decrease

K = Knit

K2TOG = Knit next 2 stitches together

Rem = Remaining

St(s) = Stitch(es)

INFO AND TIPS

- Before starting your beanie, it is crucial to do a tension square. The gauge should measure 22 sts x 26 rows for a 10x10cm (4x4") square. If you have MORE stitches in your 10x10cm gauge, increase the size of your needle to loosen your tension. If you have LESS stitches in your 10x10cm gauge, reduce the size of your needle to tighten your tension.
- To add more/less height, complete the instructions in the "rib" of the pattern and then knit more/less rows depending on your preferred height (before the colorwork begins). The colorwork of the beanie will measure roughly 8cm (3") and the crown of the beanie is roughly 5cm (2"), so this needs to be accounted for in the final length.
- MC represents the dominant colour and CC represents the non-dominant colour. When knitting colorwork, the MC will show up more dominant in the pattern.
- In the chart pattern, the MC (dominant colour) is white, and the CC (non-dominant colour) is dark grey.
- Two beanies can be made with the 4 balls of yarn required. The MC and CC of each beanie will be different.

BEANIE PATTERN

RIB

Using 4.5mm (US 7) circular needles and MC cast on 84, **96**, 108 sts in the round, using the long tail cast on method.

Join, place marker at beginning of the round, and begin to work circularly.

Round 1: *K1, P1* repeat between * to stitch marker.

Repeat a total of 18 rounds to form the brim of the beanie. The suggested height of the brim is 5cm (2"). Knit more or less rounds if you desire a different height brim.

BODY

Note: Repeat each round between the * to the stitch marker at the beginning of the round.

Using 4.5mm (US 7) circular needles and MC, knit in the round until beanie measures 10.5cm (4") from the cast on row.

Refer to the "INFO and TIPS" section on how to adapt your beanie to suit your desired finished height.

Change to 5mm (US 8) circular needles.

Round 1: *MC K3, CC K1, MC K2*

Round 2: *MC K2, CC K3, MC K1*

Round 3: *MC K1, CC K5*

Round 4: *CC K all*

Round 5: *CC K all*

Round 6: *CC K3, MC K1, CC K2*

Round 7: *CC K2, MC K1, CC K1, MC K1, CC K1*

Round 8: *CC K1, MC K1, CC K3, MC K1*

Round 9: *MC K2, CC K3, MC K1*

Round 10: *CC K1, MC K1, CC K3, MC K1*

Round 11: *CC K1, MC K1, CC K3, MC K1*

Round 12: *MC K2, CC K3, MC K1*

Round 13: *CC K1, MC K1, CC K3, MC K1*

Round 14: *CC K2, MC K1, CC K1, MC K1, CC K1*

Round 15: *CC K3, MC K1, CC K2*

Round 16: *CC K all*

Round 17: *CC K all*

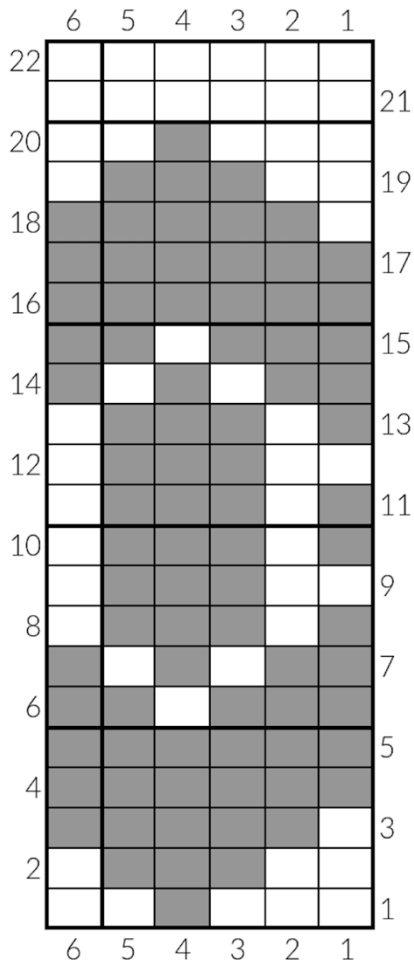
Round 18: *MC K1, CC K5*

Round 19: *MC K2, CC K3, MC K1*

Round 20: *MC K3, CC K1, MC K2*

Round 21: *MC K all*

Round 22: *MC K all*



Legend



CROWN

Note: This section requires decreasing, and you may need to change to double pointed needles if your work is too small for circular needles. Repeat each round between the * to the stitch marker at the beginning of the round.

Change to 4.5mm (US 7) circular needles.

Use MC for the remainder of the beanie.

Work 2 rounds with no decreases.

Round 1 (dec): *K10, K2TOG* (77, **88**, 99 sts remaining)

Round 2: *K all*

Round 3 (dec): *K9, K2TOG* (70, **80**, 90 sts rem)

Round 4: *K all*

Round 5 (dec): *K8, K2TOG * (63, **72**, 81 sts rem)

Round 6: *K all*

Round 7 (dec): *K7, K2TOG* (56, **64**, 72 sts rem)

Round 8: *K all*

Round 9 (dec): *K6, K2TOG* (49, **56**, 63 sts remaining)

Round 10: *K all*

Round 11 (dec): *K5, K2TOG* (42, **48**, 54 sts rem)

Round 12: *K all*

Round 13 (dec): *K4, K2TOG * (35, **40**, 45 sts rem)

Round 14: *K all*

Round 15 (dec): *K3, K2TOG* (28, **32**, 36 sts rem)

Round 16: *K all*

Round 17 (dec): *K2, K2TOG* (21, **24**, 27 sts rem)

Round 18: *K all*

Round 19 (dec): *K1, K2TOG* (14, **16**, 18 sts rem)

FINISH

Cut yarn, leaving 10cm / 4" tail.

Draw through remaining stitches, fasten, and weave in ends.

Enjoy!

Brendan

Knitwits & Yarns