



KNITTING PATTERN

Tinseltown

Sweater

Design: **The Strikkechick** | Hobbii Design

MATERIALS

8 (9) 10 (10) 11 (12) 13 (14) skeins of Friends Extra Fine Merino color 02 (color A)

6 (7) 8 (8) 9 (10) 11 (11) skeins of Friends Kid Silk color 02 (color A)

1 60 g cone of Glitter Deluxe (gold)

1 skein of Friends Extra Fine Merino color 49

1 skein of Friends Kid Silk color 49

Circular needles 4 mm /US 6 and 4.5 mm /US 7, 80 cm / 31.5"

Circular needles 4.0 mm / US 6, and 4.5 mm / US 7 40 cm / 15.7"

Stitch markers

Darning needle

Cable needle

YARN QUALITY

 **Friends Extra Fine Merino**, Hobbii

100% Wool

50 g / 1.8 oz = 165 m / 180 yds

 **Friends Kid Silk**, Hobbii

72% Mohair, 25% Silk, 3% Wool

25 g / 0.9 oz = 200 m / 218 yds

Glitter Deluxe, Go Handmade

100% Polyester

60 g / 2.1 oz = 3600 - 4200 m (4000-4500 yds)

GAUGE

20 sts x 30 rows = 7 cm x 10 cm / 3" x 4" in cables pattern

SIZE

XS (S) M (L) XL (2XL) 3XL (4XL)

MEASUREMENTS

Width: 46 (53) 56 (60) 67 (70) 74 (81) cm / 17.9" (20.7") 22" (23.4") 26.2" (27.6") 28.9" (31.7")

Length: 45 (49) 50 (52) 55 (54) 56 (56) cm / 17.6" (19.2") 19.8" (20.6") 21.5" (21.3") 21.9" (21.9")

PATTERN INFORMATION

The Tinseltown sweater is knit from the bottom up on 4.5mm needles. To knit this sweater, you should be familiar with techniques such as long-tail or Italian cast-on / bind-off, knitting charted cables, German short rows, decreases (k2tog, ssk), and picking up stitches from a knit edge.

HASHTAGS FOR SOCIAL MEDIA

#hobbiidesign #hobbiitinseltown

#hobbijapandi

BUY THE YARN HERE

<https://shop.hobbii.com/tinseltown-sweater>



QUESTIONS

If you have any questions regarding this pattern, please feel free to email us at support@hobbii.com. Please make sure to include the pattern's name and number.

Happy Crafting!

Pattern



ABBREVIATIONS

K = knit
 P = Purl
 K2tog = knit 2 together
 SSK = slip, slip, knit
 St(s) = stitch(es)
 cn = cable needle
 PM = place marker
 BOR = beginning of round
 Tw = turn work
 RS = right side
 WS = wrong side
 GSR = German Short Row
 CDD = centered double decrease
 Sl = slip

BODY

Ribbing

Using a 4.0mm circular needle, cast on 260 (300) 320 (340) 380 (400) 420 (460) sts with Friends Extra Fine Merino and kid silk in color A + glitter deluxe all held together. If you're up for a challenge (and a neat edge) you can use the Italian cast-on method. PM and join in the round. Knit 1x1 ribbing (k1, p1) until ribbing measures 2 cm.

Without cutting the yarn, switch to Friends extra fine merino and kid silk in color B. Knit all stitches in the next round, then knit another round in color B in 1x1 ribbing.

Cut yarn B and switch to color A + glitter deluxe. Knit all stitches in the next round, then continue knitting in 1x1 ribbing until ribbing measures 5 cm from cast-on stitches

Body

Switch to 4.5mm circular needles and start knitting Chart A starting from row 1. Place a second stitch marker 130 (150) 160 (170) 190 (200) 210 (230) sts from your BOR marker. Continue knitting Chart A until the body measures 32 (32) 33 (33) 34 (34) 35 (35) cm.

FRONT LEFT SHOULDER

Knit 65 (75) 80 (85) 95 (100) 105 (115) sts in Chart A. Tw

Row 1 (WS): P2tog, knit all sts in Chart A. Tw

Row 2 (RS): Knit all sts in Chart A.

Repeat rows 1 and 2 until you have 46 (50) 54 (56) 64 (70) 74 (84) sts left on your needles.

German short rows:

GSR 1 (WS): Knit all sts in Chart A until you have 6 sts left on your needles. Tw

GSR 2 (RS): Knit all sts in Chart A. Tw

Repeat GSR 1 and 2 a total of 4 times.

Cast off all sts.

FRONT RIGHT SHOULDER

Knit 65 (75) 80 (85) 95 (100) 105 (115) sts in Chart A. Tw

Row 1 (WS): Knit all sts in Chart A. Tw

Row 2 (RS): K2tog, knit all sts in Chart A. Tw

Repeat rows 1 and 2 until you have 46 (50) 54 (56) 64 (70) 74 (84) sts left on your needles.

German short rows:

GSR 1 (WS): Knit all sts in Chart A. Tw

GSR 2 (RS): Knit all sts in Chart A until you have 6 sts left on your needles. Tw

Repeat GSR 1 and 2 a total of 4 times.

Cast off all sts.

BACK PIECE

Knit 130 (150) 160 (170) 190 (200) 210 (230) for the back piece flat in Chart A until back piece measures 13 (16) 17 (19) 21 (20) 21 (21) cm. Be sure to end after a WS row.

Back right shoulder

Knit 46 (50) 54 (56) 64 (70) 74 (84) sts in Chart A

GSR 1 (WS): Knit all sts in Chart A until you have 6 sts left on your needles. Tw

GSR 2 (RS): Knit all sts in Chart A. Tw

Repeat GSR 1 and 2 a total of 4 times.

Cast off all sts.

Back left shoulder

On RS, cast off 38 (50) 52 (58) 62 (60) 62 (62) sts for the neck. Knit the remaining 46 (50) 54 (56) 64 (70) 74 (84) sts in Chart A

GSR 1 (WS): Knit all sts in Chart A. Tw

GSR 2 (RS): Knit all sts in Chart A until you have 6 sts left on your needles. Tw

Repeat GSR 1 and 2 a total of 4 times.

Cast off all sts.

SHOULDER SEAMS

With the WS of the work facing you, seam the right front & back shoulder together and left front & back shoulder together using mattress stitch.

COLLAR

Use Friends extra fine merino and kid silk in color A + glitter deluxe. With the RS of the work facing you and starting at the right-hand edge of the sts that were cast off for the neck on the back piece, pick up and knit 1 stitch in each stitch along the cast-off edge. Continue picking up and knitting stitches until you reach the center of the front piece (at the bottom of the V). Pick up a stitch from the V and place a stitch marker in it. Continue picking up stitches until you reach the cast-off edge for the back piece again. PM and join in the round. You should have picked up approximately 120 - 200 sts based on your size.

Round 1: Knit 1x1 ribbing until 1 stitch before the center stitch, CDD, continue working 1x1 ribbing symmetrically (if your last stitch before the CDD was a knit stitch, your first stitch after the CDD should be a knit stitch too).

Round 2: Work all sts as they appear (knit the knits and purl the purls). Your center stitch should always be a knit stitch.

Work rounds 1 and 2 twice (4 rounds total). And work Round 1 again. Without cutting the yarn, switch to Friends extra fine merino and kid silk in color B.

Knit all sts. Then knit Round 1 in color B.

Cut color B and knit all sts in Friends extra fine merino and kid silk in color A + glitter deluxe.

Knit rounds 1 and 2 until you have knit 14 rounds total.

Then knit one round where you purl all sts.

Knit the following 2 rounds a total of 7 times:

Round 1: Knit 1x1 ribbing until you reach the center stitch, M1R, knit the center stitch, M1L, continue working 1x1 ribbing symmetrically

Round 2: Work all sts as they appear

Bind off all sts using a stretchy bind-off method like Jeny's super stretchy bind off.

SLEEVES

Starting at the underarm, pick up and knit 110 (110) 120 (120) 120 (130) 140 (150) sts. PM and join in the round

Knit Chart A until sleeve measures 15 (15) 15 (12) 12 (12) 10 (10) 7 cm. On the next row 5 of Chart A, decrease 1 stitch to either side of the BOR marker within the closest cable (your cable will go from being 6-stitches wide to 5-stitches wide). For the neatest effect, k2tog to the left of the BOR marker and SSK to the right of the BOR marker.

On the next row 3, decrease 1 stitch to either side of the BOR marker within the closest cable. You will now have 4 cable stitches and will knit the first and last cables on the next row 4 as 2-stitch cables.

Continue decreasing evenly on rows 5 and 3 until you have 90 (90) 90 (90) 90 (100) 100 (100) sts left on your needles. Keep knitting chart A in the round until sleeve measures 38 cm or desired length from cast-on edge.

Sleeve ribbing

Knit one row as follows *knit 3, k2tog* You should now have 72 (72) 72 (72) 72 (80) 80 (80) sts left on your needles.

Knit in 1x1 ribbing for 5 rounds. Without cutting the yarn, switch to Friends extra fine merino and kid silk in color B. Knit all sts in the round, then knit 1x1 ribbing for 1 round. Cut the yarn and switch to Friends extra fine merino and kid silk in color A + glitter deluxe. Knit all sts in the round, then knit 1x1 ribbing for 9 rounds. Cast off knit over knit and purl over purl or using Italian bind-off

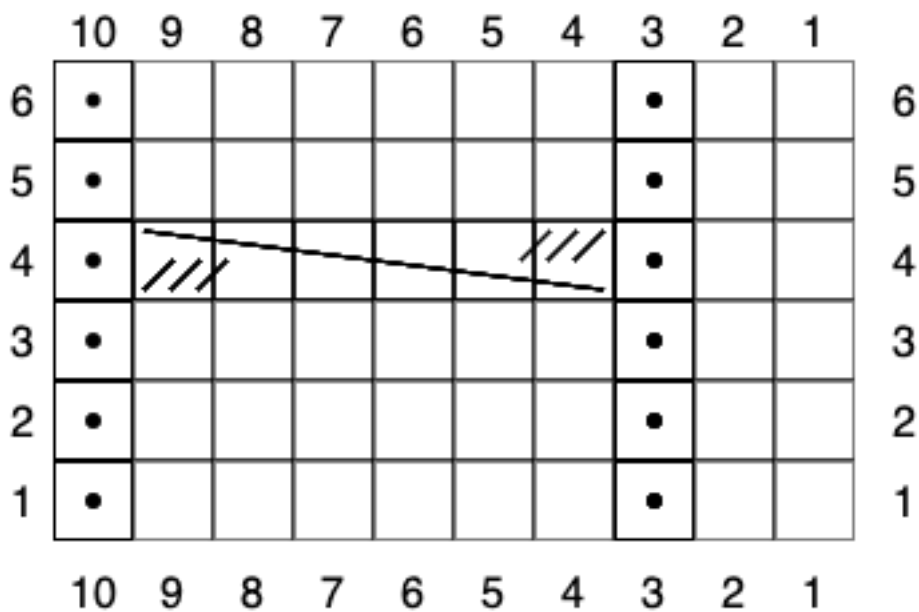
FINISHING

Wet-block and dry your finished sweater. Weave in and cut ends. Enjoy wearing your new Tinseltown sweater!

Enjoy!

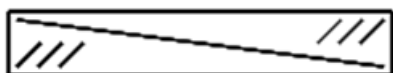
Samantha Swamy

CHART A: BODY AND SLEEVES



 k on RS, p on WS

 p on RS, k on WS

 Sl 3 sts to cn an hold to front, k3, k3 from cn