

CROCHET PATTERN

Carnicardi

Cardigan

Design: [jlynn_crochet](#) | Hobbii Design




MATERIALS

4 (5) 6 (6) 7 skeins of Carnival col. 19

Crochet hook 4.5 mm / US 7
or hook matching the gauge

Darning needle

YARN QUALITY

 **Carnival**, Hobbii
100 % Premium Acrylic
100 g / 3.5 oz = 240 m / 262 yds

GAUGE

Granny square 4 rows = 10 cm x 10 cm / 4" x 4"

ABBREVIATIONS

ch = chain
sc = single crochet
dc = double crochet
spdc = double crochet spike stitch: double
crochet made in the row below
slst = slip stitch
slst fl = slip stitch front loop
slst bl = slip stitch back loop
cl = cluster / group of 3 double crochet (also
used in context of dc, spdc, dc)
wc = waistcoat stitch: instead of working the
sc on top of the row below, make it inside
the sc of the row below, right through the
"v" shaped form on the front of the stitch.
sc2tog = single crochet 2 together
spcl = spike cluster

SIZE

XS (S) M (L) XL

MEASUREMENTS

Back width: 49 (53) 55 (57) 59 cm / 19.3"
(20.9") 21.7" (22.4") 23.2"
Length: 35 (39) 41 (43) 45 cm / 13.8" (15.4")
16.1" (16.9") 17.7"
Feel free to add rows if you want your
Cardigan wider or longer.

PATTERN INFORMATION

The Carnicardi is the perfect Cardigan for
cool late summer nights or autumn days.
It is cropped but you can add rows to the
bottom if that's not your thing.
The pattern is worked with a medium sized
hook in two hexagons, sewn together at the
back, which is a fast and fun way to work a
Cardigan.
Advanced beginners are able to make this. It
is easier if you know how to crochet Granny
squares because it uses a similar technique.
I've added some useful pictures to the
pattern for an easier understanding.
The Cardigan is worn open in the front, it is
not meant to be closed or buttoned up.
The colour gradient of Carnival makes every
Cardigan unique in its own way. I can't wait to
see all of your different Carnicardis.

HASHTAGS FOR SOCIAL MEDIA

#hobbiidesign #hobbiicarnival #hobbiicarnicardi
#hobbiicreators

BUY THE YARN HERE

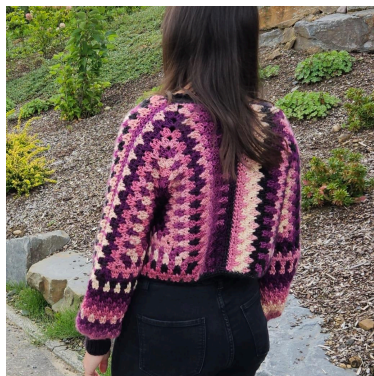
<https://shop.hobbii.com/carnicardi-cardigan>

QUESTIONS

If you have any questions regarding this pattern, please feel free to email us at
support@hobbii.com
Please make sure to include the pattern's name and number.

Happy Crafting!

Pattern



INFO AND TIPS

The hexagons are worked like a granny square but with six corners. In each corner you work 2 Granny clusters (3 dc) with ch 2 between them. The clusters in the non-corners are worked with a spike double crochet as the middle dc.

Don't turn your work while working the hexagon.

I used a different color for the sleeve ribbings for the contrast to the rest of the sleeve. With color control I cut the color I wanted for my sleeve ribbing from one skein and used it beginning with the row before the sleeve ribbing. If you like the look you can do this too but you don't have to.

The yarn tends to vary in thickness, so it may be that your gauge was correct, but your Cardigan seems to be smaller than the measurements you aimed for. Just block your finished piece to the wanted size.

Gauge:

Make a magic circle, ch 3, 2 dc, ch 2, 3 dc, ch 2, 3 dc, ch 2, 3 dc, ch 2, slst

Row 2: ch 3, turn, 2 dc, ch 2, 3 dc in same corner, *3 dc, ch 2, 3 dc* in every corner

Row 3: ch 3, turn, make spcl (dc, spdc, dc) in every non-corner and work your corners like in row 2

Row 4: work like row 3



BODY HEXAGON (make two of these)

Make a magic circle and ch 3 , 2 dc, *ch 2, 3 dc* (repeat *-* 5 times) ch 2, slst in the top of your first dc

You should have 6 corners now



Row 2: slst fl on top of third dc of the first cl of previous row, ch 3, 2 dc in corner hole, ch 2, 3 dc in same corner, *3 dc in next corner, ch 2 and 3 dc in same corner*, repeat *-* in every corner of this row, at the end of the row ch 1 and slst on top of the first dc of previous row as seen in the picture below.



Row 3: slst fl on top of next dc of previous row, ch 3, 2 dc, ch 2, 3 dc in same corner space, dc in next space, spdc, dc work all the corners like in row 2 and every non-corners with dc, spdc, dc at the end of the row ch 1 and slst on top of the first dc of the last row



In this picture you see how to work the spdc. For the spcl first make a normal dc in the space between the cl of row 2 then work a spdc by inserting where the blue needle pops out (right on top of that middle dc of the cl of row 2) and just work as a normal dc. Then to fulfill the spcl make another dc.

Repeat row 3 until row 14 (16) 17 (18) 19

Fold your hexagons like in the picture below.



SLEEVES

Now you have to close the sleeves with a filling row on each top row so you don't have any holes.

Do this on all of the 4 top rows: start with 1 sc in the corner, 3 sc on top of cl, 1 spdc, *2 sc on top of cl, 1 spdc* (repeat *until end of the row), 3 sc on top of the last cl (corner cl)

Fold your hexagons with the wrong side facing out.



Close the sleeves with sewing top front and top back row together.

Now we have to add length to the sleeves.

Row 1: Ch 3 on bottom end of your sleeve, spdc, dc in same space, continue the spike cl for the row until you have 15 (17) 18 (19) 20 cl and slst into the first dc of the row.

Repeat until row 12 (10) 10 (9) 8 (start every row with slst fl to the end of the cl below, then ch 3)

Row 13 (11) 11 (10) 9 /Decrease/filling row: ch 1, *1sc, 1 spdc* , repeat *-* and always place the sc in middle of cl below and leave two stitches unworked
You should have 30 (34) 36 (38) 40 stitches at the end of the row
slst into the first sc of the row

Row 14 (12) 12 (11) 10: ch 1, skip the first stitch *sc, sc2tog* repeat *-* until only 2 stitches are left, sc2tog
You should have 20 (22) 24 (25) 26 stitches
slst into the first sc of the row
(Change color in next row)

Row 15 (13) 13 (12) 11: ch 1, wc 20 (22) 24 (25) 26 times, slst into first stitch of the row
(I've used the same color in this row like I used for the sleeve ribbing)

SLEEVE RIBBING



Work on the right side out:

Ch 10, slst in 2nd ch from the hook, slst 8 times, *slst to next stitch on the sleeve, turn, 8 slst bl, slst, ch 1, 9 slst bl* repeat around the sleeve 20 (22) 24 (25) 26 times up and down.

Slst seam first and last row up.



BACK

Add 7 rows to each side

Start like in the picture on the back bottom for the right side (wearing right side) of your Cardigan, for the left side you have to start at the top.

Row 1: ch 3 in the corner, 2 dc in same space, in next space *dc, spdc, dc* repeat *-* till the end of the row

Row 2: ch 3, turn your work, *dc, spdc, dc* in next space, repeat *-* till the last "granny hole" and work 1 dc into the last stitch

Row 3: ch 3, turn, spdc, dc, *dc, spdc, dc in next space* , repeat *-* till the end of the row

Repeat rows 2 and 3 until you have 6 rows.

Row 7/filling row: ch 1, turn, 1 spdc, *2 sc on top of cl, 1 spdc* , repeat *-* until end of the row, 1 sc

Sew the back parts together

If you think the Cardigan is too short for your liking feel free to add extra rows to the bottom before starting the edges.



EDGES

Insert your hook in the middle of the top of the back like in the the picture below.



Row 1: Work your way around the edges evenly in sc. On the front and the bottom edges fill your spaces with spdc like in the filling row of the back part (*2 sc, spdc*) work 4 sc in the two front bottom corners.

Row 2: sc in every stitch. Work 2 sc each in three of the corner sc on the bottom.



Enjoy!

Jenny Lynn - jlynn_crochet

