



KNITTING PATTERN

Dancing Joy

Christmas Sweater

Design: Garnstyrelsen | Hobbii Design

MATERIALS

8 (9) 10 (11) 12 (13) skeins of Friends Wool, color Off White (02)

1 (1) 1 (1) 2 (2) skein(s) of Friends Wool, color Dune (07) for the people

1 (1) 1 (1) 2 (2) skein(s) of Friends Wool, color Bottle Green (112) for the christmas trees

1 (1) 1 (1) 1 (1) skein of Flash It!, color Gold (01) for the stars

Circular needles 4.0 mm (US 6) and 4.5 mm (US 7), 40 cm (15.75 in) as well as 60 or 80 cm (23.6 or 31.5 in)

For the sleeve, use either 4.00 mm double pointed needles or Magic Loop with circular needles

12 stitch markers

Darning needle

Stitch wire

YARN QUALITY

 **Friends Wool**, Hobbii

100% Wool

50 g (1.76 oz) = 100 m (109.4 yds)

 **Flash It!**, Hobbii

80% Viskose, 20% Metallic fibre

50 g (1.76 oz) = 90 m (98.4 yds)

GAUGE

10 x 10 cm (4 x 4 in) = 18 sts x 24 rows

SIZES

XS (S) M (L) XL (2XL)

MEASUREMENTS

Chest circumference: 80 (90) 105 (120) 130 (145) cm / 31.5 (34.5) 41.3 (47.2) 51.2 (57) in

Length (Measured from shoulder and down): approx. 56 (58) 60 (62) 64 (66) cm / 22 (22.8) 23.6 (24.4) 25.2 (26) in

PATTERN INFORMATION

The Dancing Joy Sweater is Garnstyrelsen's take on a warm Christmas Sweater.

The sweater is worked bottom up in the lovely, soft Friends Wool. The sweater is worked on 4.0 mm (US 6) and 4.5 mm (US 7) needles. For the sleeves, you can use Magic Loop.

The sweater has a raised neck made with short rows, waist shaping on the sides and a longer back; also made with short rows. All details are intended for the optimal fit. The yoke with a Fair Isle pattern and decreases is worked according to a chart which is found on page 6 in the pattern. The pattern is not suitable for beginners, as most of the colorwork in the yoke is done with 3 colors at a time.

HASHTAGS FOR SOCIAL MEDIA

#hobbiidesign #hobbiidancingjoy

#hobbiigingerandholly #garnstyrelsen

#theyarnagency

BUY THE YARN HERE

<https://shop.hobbii.com/dancing-joy-christmas-sweater>

QUESTIONS

If you have any questions regarding this pattern, please feel free to email us at

support@hobbii.com

Please make sure to include the pattern's name and number.

Happy Crafting!

Pattern



ABBREVIATIONS

k = knit
 p = purl
 ktbl = knit through the back loop (twisted)
 st(s) = stitch(s)
 rnd = round
 inc = increase(s)
 M1L = left leaning increase
 M1R = right leaning increase
 dec = decrease
 mm = millimeter
 sm = stitch marker
 GSR = German Short Rows
 tog = together
 k2togtbl = knit 2 sts together through the back loop
 raglan dec = raglan decreases

I recommend reading the entire pattern in addition to making a gauge swatch before you start knitting to get an overview over both the pattern and your gauge.

The Christmas Sweater has a positive ease of approx. 5 cm (2 in). This means you should pick the size, which is about 5 cm bigger than your own chest circumference.

The Friends Wool is a relatively firm yarn. Because of this it is important not to tighten the yarn/floats (loose threads on the wrong side of your work) when knitting the Fair Isle pattern on the yoke.

If you knit tightly it can be a good idea to go up half a needle size when working the yoke, and if you knit loosely it can be a good idea to go down a needle size.

German Short Rows

You work up until the place where you have to turn. Turn work and slip 1 st purlwise, holding the yarn in front of your work (towards yourself). Bring the yarn over the right needle and down behind your work (away from yourself) and pull the yarn tight to create a "double stitch" - a st

consisting of “two legs”. Continue working. On the following row the double st is knitted or purled as one st according to pattern.

The twisted knit stitches are worked by inserting the tip of your right needle through the back loop of the stitch instead of the front loop as usual.

Increases are worked so they either lean to the right (M1R) or lean to the left (M1L) like so:

M1R: Insert the tip of your left hand needle from back to front under the strand between two stitches and knit into the front loop.

M1L: Insert the tip of your left hand needle from front to back under the strand between two stitches and knit into the back loop.

Bubble-star from chart

The bubble can either be embroidered with the gold thread on the finished sweater with a French knot. **Or** knit as follows: Increase to 3 sts in the same st by knitting 1 st, yarn over, knit 1 st. Turn and purl 3 sts purl. Turn and knit the 3 sts together to 1 st again by lifting the 2nd st on the right needle over the 1st st and finally the 3rd st over the 1st st = 1 st left on needle.

BODY

Ribbing

Cast on 140 (164) 188 (212) 236 (260) sts on 4.0 mm circular needles, 60 or 80 cm using color Off White (02).

Join to work in the round but be careful not to twist the sts, and work 6 cm (2.4 in) in 1x1 rib (k1, p1). Place a sm in the first st of the rnd and at the other side of your work, i.e. in st No. 71 (83.) 95. (107) 119. (131.).

When the ribbing measures 6 cm (2.4 in) change to 4.5 mm, 60 or 80 cm circular needles and work 2 rounds of stockinette stitch.

Longer back piece with GSR:

If you wish for your sweater to be a bit longer in the back, you need to work GSR at this point like so: Mark the 16 back sts of the back piece with 2 sm and work GSR. Knit until you reach the left sm, turn, GSR and purl 16 sts back. Turn, GSR and knit you way back. Continue and add 6 sts on both sides of sm each time you turn, in total 4 (4) 4 (4) 4 (4) times.

From here you will continue in stockinette stitch.

When you’ve worked 5 cm (2 in) from the ribbing (measured on the front piece), you will work waist shaping like so: k1, k2tog, k until 3 sts before the next sm, k2togtbl, k1, k2tog, k until 2 sts before sm and k2togtbl. 4 sts have now been decreased.

You will work a total of 3 rnds of dec every 3 (3) 3 (4) 4 (4) cm / 1.2 (1.2) 1.2 (1.6) 1.6 (1.6) in.

Work 3 (3) 3 (4) 4 (4) cm / 1.2 (1.2) 1.2 (1.6) 1.6 (1.6) in of stockinette stitch and proceed to work 3 rnds of inc with the same intervals as the dec, like so: k1, M1R, k until 1 st before the next sm, M1L, k1, M1R, k until 1 st before the next sm and M1L.

Now, a total of 140 (164) 188 (212) 236 (260) sts will remain on your needles.

If you do NOT wish for waist shaping on your sweater, simply continue without adjusting the number of sts.

When your work measures 32 (34) 36 (38) 40 (42) cm / 12.6 (13.4) 14.2 (15) 15.75 (16.5) in or reaches desired length, you will bind off 10 sts in each side (all sizes), like so: bind off 5 sts, k 60

(72) 84 (96) 108 (120) sts, bind off 10 sts, k 60 (72) 84 (96) 108 (120) sts, bind off 5 sts. Leave the body to rest and work the sleeves.

SLEEVES

Cast on 40 (40) 48 (48) 56 (56) sts on 4.0 mm, 40 cm circular needles, Addi Crasy needles or use Magic Loop using color Off White (02), and work 6 cm (2.4 in) in 1x1 rib (k1, p1)

Place a sm in the first st of the rnd.

When the ribbing measures 6 cm (2.4 in) change to 4.5 mm, 40 cm circular needles or continue using Magic Loop. You will inc 1 st on either side of sm on every 4th rnd. The first st is a M1R and the last st before sm is a M1L. The inc will continue on every 4th rnd until you reach a total of 70 (70) 82 (82) 94 (94) st on your needles.

Continue working in stockinette stitch until the sleeve measures 40 (42) 44 (46) 48 (50) cm / 15.75 (16.5) 17.3 (18.1) 18.9 (19.7) in or reaches desired length. Try on the sleeve while knitting it and adjust the length by measuring from 3 fingertips under the armpit to the ribbing at the wrist.

Bind off 10 sts like so: Bind off 5 sts, k 60 (60) 72 (72) 84 (84) sts and bind off the final 5 sts.

Knit the other sleeve in the same way.

YOKE

Join all the pieces on the same 4.5 mm circular needles by knitting the sleeves on to the body. At the same time, place sm in the st where the sleeves and body joined = 4 sm in total.

You now have a total of 240 (264) 312 (336) 384 (408) sts on your needles.

NOTE: The rnd always begins and ends at the transition between the left sleeve and the back piece. Before working the chart on page 6, knit 6 rnds working raglan dec on every other of these rnds.

The raglan decreases are worked like so: *knit 2 together, knit until the st before next sm, knit 2 together through the back loop.* Repeat *-* throughout rnds (= 8 sts decreased)

Make sure to tighten the dec to prevent "holes" and instead create a nice, almost invisible dec.

After 6 rnds you've decreased 24 sts and you will continue to follow the chart on page 6.

When the chart is completed it is possible to create a raised neckline with GSR, before moving on to the turtleneck.

Raised neckline with GSR:

Mark the 16 back sts of the neck with 2 new sm and work GSR. Knit until you reach the left sm, turn, GSR and purl 16 sts back. Turn, GSR and knit you way back. Continue and add 4 sts on both sides of sm each time you turn, in total 3 (3) 3 (3) 3 (3) times. Finish off by knitting a rnd, ending at the beginning of the round.

Now, the turtleneck is worked in 1x1 ribbing (k1, p1) - a total of 18 cm / 7 in (all sizes)

If you wish for a higher turtleneck, simply work until you reach your desired length.

Bind off evenly and not too tightly in k1, p1.

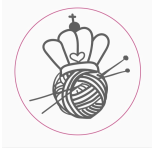
FINISHING AND WASHING

Weave in all ends discreetly.

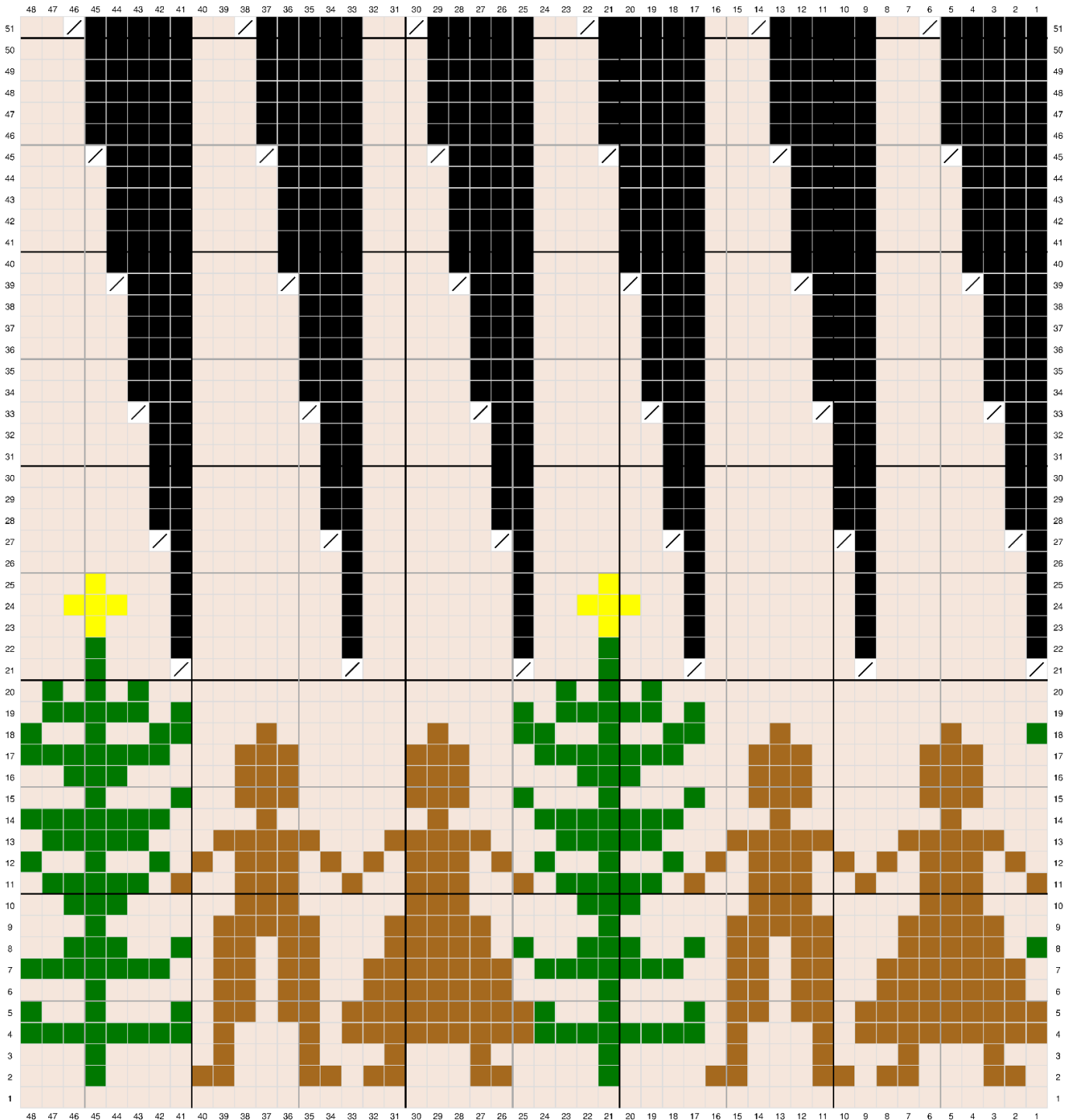
Wash your sweater using a good quality wool soap, either by hand or in your washing machine on a wool program (max. 30 degrees celsius (86°F) and max. 400 revolutions).

Stretch the sweater into shape on a towel. You can also steam your work when dry so the sweater becomes nice and even.

Enjoy!
Love,
Garnstyrelsen



CHART



- Dune - color 1
- Bottle Green - color 2
- Off White - main color
- Gold "bubble" star
- ✓ Knit 2 sts together
- The stitch no longer exists