



KNITTING PATTERN

Elsa

Shawl


Design: Libère tes mailles | Hobbii Design


MATERIALS

3 skeins of Diablo color Teal Blue (27)
3 skeins of Kind Feather color Petrol Blue (18)

Circular needle 5 mm
An extra straight needle 5 mm
Stitch marker
Wool needle
Blocking mat
T-needles for blocking

YARN QUALITY

 **Diablo**, Hobbii
40 % Acrylic, 30 % Mohair, 30 % Polyamide
25 g (0.9 oz) = 225 m (246 yds)

 **Kind Feather**, Hobbii
100% Premium Acrylic
100 g (3.5 oz) = 235 m (257 yds)

GAUGE

In stockinette, worked with one thread of each quality and after blocking
15 sts x 23 rows = 4" x 4" (10 cm x 10 cm)

ABBREVIATIONS

st = stitch
k = knit
p = purl
yo = yarn over
skp = slip, knit, pass
k2tog = knit 2 together
p2tog = purl 2 together
tbl = through the back loop
slm = slip marker
kyok = knit, yarn over, knit
RS: right side
WS: wrong side

QUESTIONS

If you have any questions regarding this pattern, please feel free to email us at support@hobbii.com
Please make sure to include the pattern's name and number.

Happy Crafting!

SIZE

One size

MEASUREMENTS

Width at the largest point: 23,5" / 60 cm
Length: 64" / 163 cm

PATTERN INFORMATION

Elsa is a shawl work with one strand of Diablo and one of Kind Feather. This blend of qualities brings softness and warmth to this shawl worked in stockinette and finished with a border with leaf stitches.

The main part is worked first, from up to bottom. Then the border is knitted perpendicular to the main part in a leaves pattern.

Some charts are available for the leaves pattern, but written explanations are also available.

HASHTAGS FOR SOCIAL MEDIA

#hobbiidesign #hobbiielsa #hobbiielements

BUY THE YARN HERE

<https://shop.hobbii.com/elsa-shawl>



Pattern



INFO AND TIPS

The shawl is knit with 1 strand of Kind Feather and 1 strand of Diablo held together. First we will knit the main part in stockinette, from up to bottom, adding stitches on both right and wrong sides. Then the border is knitted perpendicular to the main part.

The instructions for the border are available in written explanations and in charts. Please read the notes carefully before the border's last part.

Blocking your project is essential, to open the leaves pattern and to make it shine.

“Work the sts as they appear” means that you must knit a knit st and purl a purl st.

SPECIAL STITCHES

skp: decrease one st: slip one stitch as if to knit, knit the next stitch, pass slipped stitch over knit stitch.

kyok: increase 2 sts: knit the st but keep the st on the left needle, yarn over, knit again in the same st.

P2TOG: slip the st from the right needle (from the main part) on the left needle and purl this st together with the next st.

MAIN PART

With 1 strand of Kind Feather and 1 strand of Diablo held together and circular needle 5 mm

Cast on 5 sts

Row 1: k2, yo, p1, yo, k2 (7 sts)

Row 2: k2, kyok, k until 3 sts left, kyok, k2. (11 sts)

Row 3: k2, yo, p until 2 sts left, yo, k2. (13 sts)

After these 2 last rows the number of stitches will be increased by 6.

Rows 4 to 89: Repeat Rows 2 and 3 for another 43 times.

So you have 271 sts. To make the border it's important to have the right numbers of stitches.

DO NOT cut the threads, continue with BORDER

BORDER

The border is knit perpendicular to the main part, so continue to knit the border with your circular needle (with the sts from your main part) and your extra straight needle 5mm.

Note: the st marker will help you to know where the end of the border's row is. On the right side rows, after slipping the marker you will **always** knit the next two stitches together (one from the border and one from the main part) and then turn. And sometimes, on wrong side rows, you will purl one stitch from the main part and one from the border together.

You can follow the written explanations below or the charts at the end of the pattern.

The **P2TOG** and **K2TOG** that are highlighted are made with one st from the border and one st from the main part of the shawl.

P2TOG: see **SPECIAL STITCHES**.

FIRST PART

Cast on 7 sts on your circular needle after the main part. Put a marker after the first new st. So you have from right to left, 6 new sts, marker, 1 new st, 271 sts from the main part.

Row 1 (RS): k1, yo twice, k5, yo, slm, **K2TOG**, turn.

Row 2 (WS): k until the double yo and 1 st left. P the first yo, k the second yo and k the last st. Turn.

Row 3: bind off 2 sts, (after that you have 2 stitches less, and 1 st on right needle), k1, yo, k5, yo, slm, **K2TOG**, turn.

Row 4: p until 1 st left, k1, turn.

Row 5: k1, yo twice, k1, yo, k7, yo, slm, **K2TOG**, turn.

Row 6: p until the double yo and 1 st left. P the first yo, k the second yo and k the last st. Turn.

Row 7: bind off 2 sts, k1, yo, k9, yo, slm, **K2TOG**, turn.

Row 8: p until 1 st left, k1, turn.

Row 9: k1, yo twice, k1, yo, k11, yo, slm, **K2TOG**, turn.

Row 10: p until the double yo and 1 st left. P the first yo, k the second yo and k the last st. Turn.

Row 11: bind off 2 sts, k1, yo, k13, yo, slm, **K2TOG**, turn.

Row 12: p until 1 st left, k1, turn.

Row 13: k1, yo twice, k1, yo, k2, yo, k13, yo, slm, **K2TOG**, turn.

Row 14: p until the double yo and 1 st left. P the first yo, k the second yo and k the last st. Turn.

Row 15: bind off 2 sts, k1, yo, k5, yo, k6, p1, k6, yo, slm, **K2TOG**, turn.

Row 16: work the sts as they appear until 1 st left, k1 and turn.

Row 17: k1, yo twice, k1, yo, k7, yo, k6, p1, k2tog, k5, yo, slm, **K2TOG**, turn.

Row 18: work the sts as they appear until the double yo and 1 st left. P the first yo, k the second yo and k the last st. Turn.

Row 19: bind off 2 sts, k1, yo, make one, k9, yo, k6, p1, k2tog, k5, yo, slm, **K2TOG**, turn.

Row 20: work the sts as they appear until 1 st left, make one, k1 and turn. Cast on 1 st. (30 sts before marker)

SECOND PART

Row 1: k1, yo twice, k1, yo, k4, skp, p1, k2tog, k5, yo, k4, skp, p1, k2tog, k4, yo, k1, yo, slm, **K2TOG**, turn.

Row 2: slip the first st of right needle to the left needle (this st is a st from the main part), **P2TOG**, slm, work the sts as they appear until the double yo and 1 st left. P the first yo, k the second yo and k the last st. Turn.

Row 3: bind off 2 sts, (after that you have 2 stitches less, and 1 st on right needle), k1, yo, k4, skp, p1, k2tog, k5, yo, k3, skp, p1, k2tog, k3, yo, k3, yo, slm, **K2TOG**, turn.

Row 4: work the sts as they appear until 1 st left, k1 and turn.

Row 5: k1, yo twice, k1, yo, k4, skp, p1, k2tog, k5, yo, k2, skp, p1, k2tog, k2, yo, k5, yo, slm, **K2TOG**, turn.

Row 6: work the sts as they appear until the double yo and 1 st left. P the first yo, k the second yo and k the last st. Turn.

Row 7: bind off 2 sts, k1, yo, k1, yo, k3, skp, p1, k2tog, k3, k2tog, yo, k1, skp, p1, k2tog, k1, yo, k7, yo, slm, **K2TOG**, turn

Row 8: slip the first st of right needle to the left needle (this st is a st from the main part), **P2TOG**, slm, work the sts as they appear until 1 st left, k1 and turn.

Row 9: k1, yo twice, k1, yo, k3, yo, k2, skp, p1, k2tog, k2, k2tog, yo, skp, p1, k2tog, yo, k9, yo, slm, **K2TOG**, turn

Row 10: work the sts as they appear until the double yo and 1 st left. P the first yo, k the second yo and k the last st. Turn.

Row 11: bind off 2 sts, k1, yo, k5, yo, k1, skp, p1, k2tog, k3, k3tog, yo, k11, yo, slm, **K2TOG**, turn.

Row 12: slip the first st of right needle to the left needle (this st is a st from the main part), **P2TOG**, slm, work the sts as they appear until 1 st left, k1 and turn.

Row 13: k1, yo twice, k1, yo, k7, yo, skp, p1, k2tog, k3tog, yo, k13, yo, slm, **K2TOG**, turn.

Row 14: work the sts as they appear until the double yo and 1 st left. P the first yo, k the second yo and k the last st. Turn.

Row 15: bind off 2 sts, k1, yo, k9, yo, k3tog tbl, k1, yo, k5, skp, p1, k2tog, k5, yo, slm, **K2TOG**, turn.

Row 16: work the sts as they appear until 1 st left, k1 and turn.

Row 17: k1, yo twice, k1, yo, k11, yo, skp, k5, skp, p1, k2tog, k5, yo, slm, **K2TOG**, turn.

Row 18: slip the first st of right needle to the left needle (this st is a st from the main part), **P2TOG**, slm, work the sts as they appear until the double yo and 1 st left. P the first yo, k the second yo and k the last st. Turn.

Row 19: bind off 2 sts, k1, yo, k12, yo, skp, k4, skp, p1, k2tog, k5, yo, slm, **K2TOG**, turn.

Row 20: work the sts as they appear until 1 st left, k1 and turn.

Repeat Rows 1 to 20 for a total of 18 times.

Important note: after the 18th repeat you must have 10 sts remaining after the st marker. If you have 11 that's ok but if you have less or more sts, DO NOT work the third part, instead repeat Rows 1 to 20 from Second Part until all the stitches from the main part are knitted and then bind off all the sts.

THIRD PART

Row 1: k1, yo twice, k1, yo, skp, k2, skp, p1, k2tog, k3, k2tog, yo, k4, skp, p1, k2tog, k4, yo, k1, yo, slm, **K2TOG**, turn.

Row 2: work the sts as they appear until the double yo and 1 st left. P the first yo, k the second yo and k the last st. Turn.

Row 3: bind off 2 sts, k1, yo, skp, k1, skp, p1, k2tog, k2, k2tog, yo, k3, skp, p1, k2tog, k3, yo, k3, yo, slm, **K2TOG**, turn.

Row 4: work the sts as they appear until 1 st left, k1 and turn.

Row 5: k1, yo twice, k1, yo, skp, skp, p1, k2tog, k1, k2tog, yo, k2, skp, p1, k2tog, k2, yo, k5, yo, slm, **K2TOG**, turn

Row 6: work the sts as they appear until the double yo and 1 st left. P the first yo, k the second yo and k the last st. Turn.

Row 7: bind off 2 sts, k1, yo, k3tog tbl, p1, k2tog, k2tog, yo, k1, skp, p1, k2tog, k1, yo, k7, yo, slm, **K2TOG**, turn

Row 8: work the sts as they appear until 1 st left, k1 and turn.

Row 9: k1, yo twice, k1, skp, p1, k3tog, yo, skp, p1, k2tog, yo, k9, yo, slm, **K2TOG**, turn

Row 10: work the sts as they appear until the double yo and 1 st left. P the first yo, k the second yo and k the last st. Turn.

Row 11: bind off 2 sts, k1, k3tog tbl, k1, k3tog, yo, k11, yo, slm, **K2TOG**, turn.

Row 12: work the sts as they appear until 1 st left, k1 and turn.

Row 13: k1, yo twice, skp, k2tog, yo, k4, skp, p1, k2tog, k4, yo, slm, **K2TOG**, turn.

Row 14: work the sts as they appear until the double yo and 1 st left. P the first yo, k the second yo and k the last st. Turn.

Row 15: bind off 2 sts, k3tog tbl, yo, k3, skp, p1, k2tog, k2, k2tog, yo, slm, **K2TOG**, turn.

Row 16: work the sts as they appear until 1 st left, k1 and turn.

Row 17: k1, yo twice, k1, yo, skp, k1, skp, p1, k3tog, k2, yo, slm, **K2TOG**, turn.

Row 18: work the sts as they appear until the double yo and 1 st left. P the first yo, k the second yo and k the last st. Turn.

Row 19: bind off 2 sts, k1, skp, skp, p1, k2tog, k2, remove marker.

If you had 10 sts remaining before the Third Part follow this: k1, turn.
 If you had 11 sts remaining before the Third Part follow this: **K2TOG**, turn.

Bind off all the sts and weave in ends.

Wet block your shawl and tadaaaaaam! It's ready to wear.

Dare and unleash your stitches!

I'll be over the moon to see your work. If you use Instagram don't hesitate to tag me @libere.tes.mailles or use hashtags #liberetesmailles #hobbiielsa Thank you!!

Enjoy!

Alexandra, Libère tes mailles



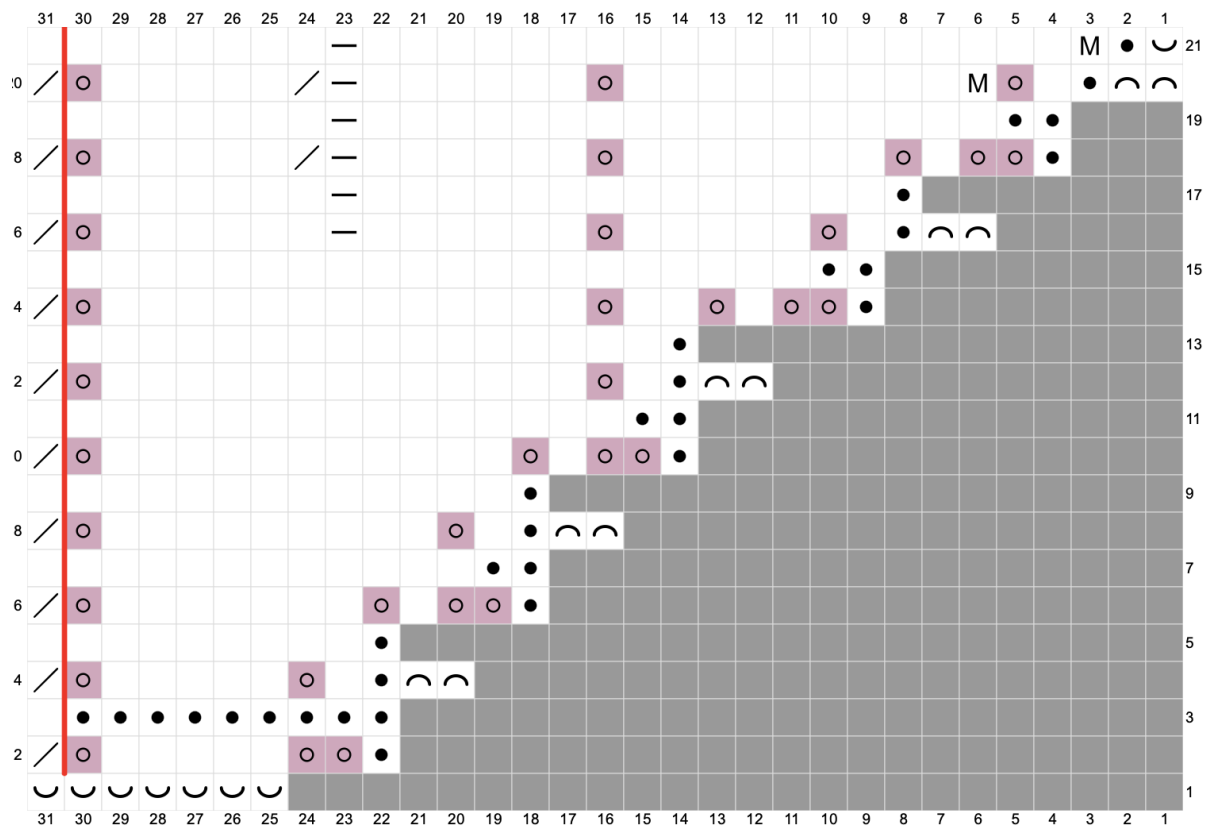
LEGEND

- | no stitch
- | RS: knit WS: purl
- | RS: knit WS: knit
- | RS: purl WS: knit
- / | RS: k2tog WS: P2TOG (see special stitches)
- \ | slip, knit, pass
- / | knit 3 stitches together
- \ | knit 3 stitches together through the back loops
- | yarn over
- ⤵ | bind off
- ⤴ | cast on
- M | make one

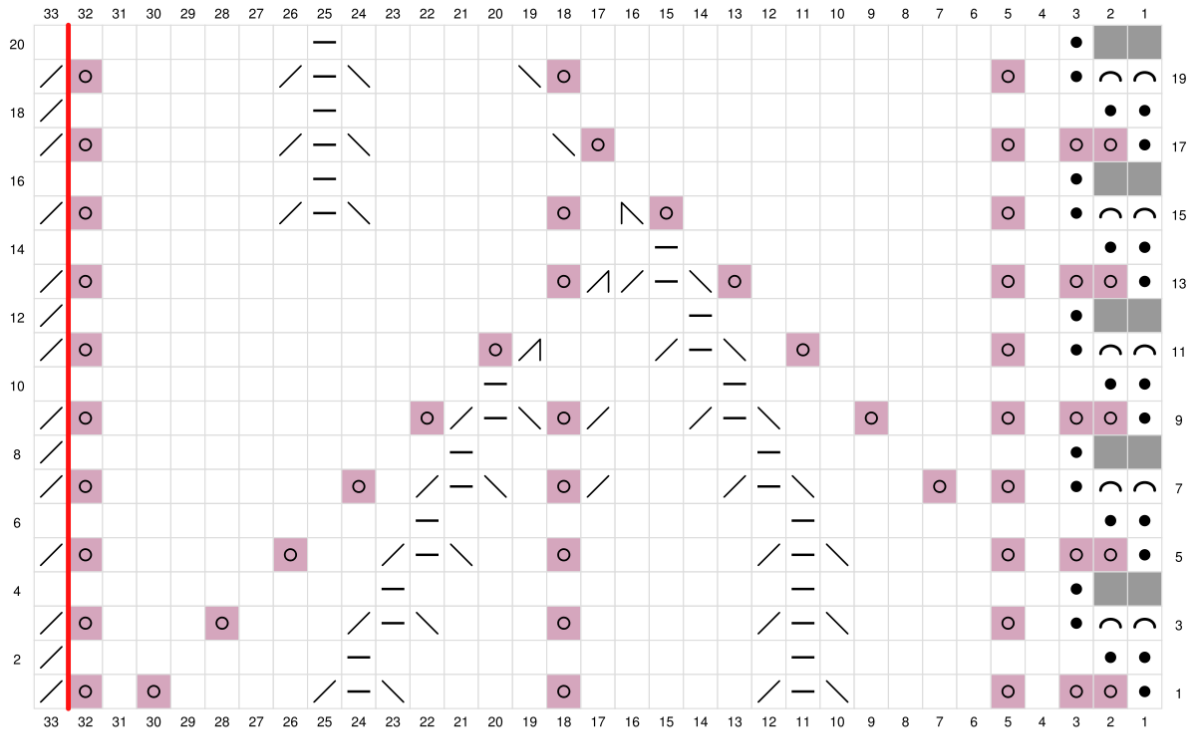


the red line is the place of the stitch marker, the stitches worked together, after OR before the red line is one stitch from the border and one stitch from the main part.

CHARTS FIRST PART



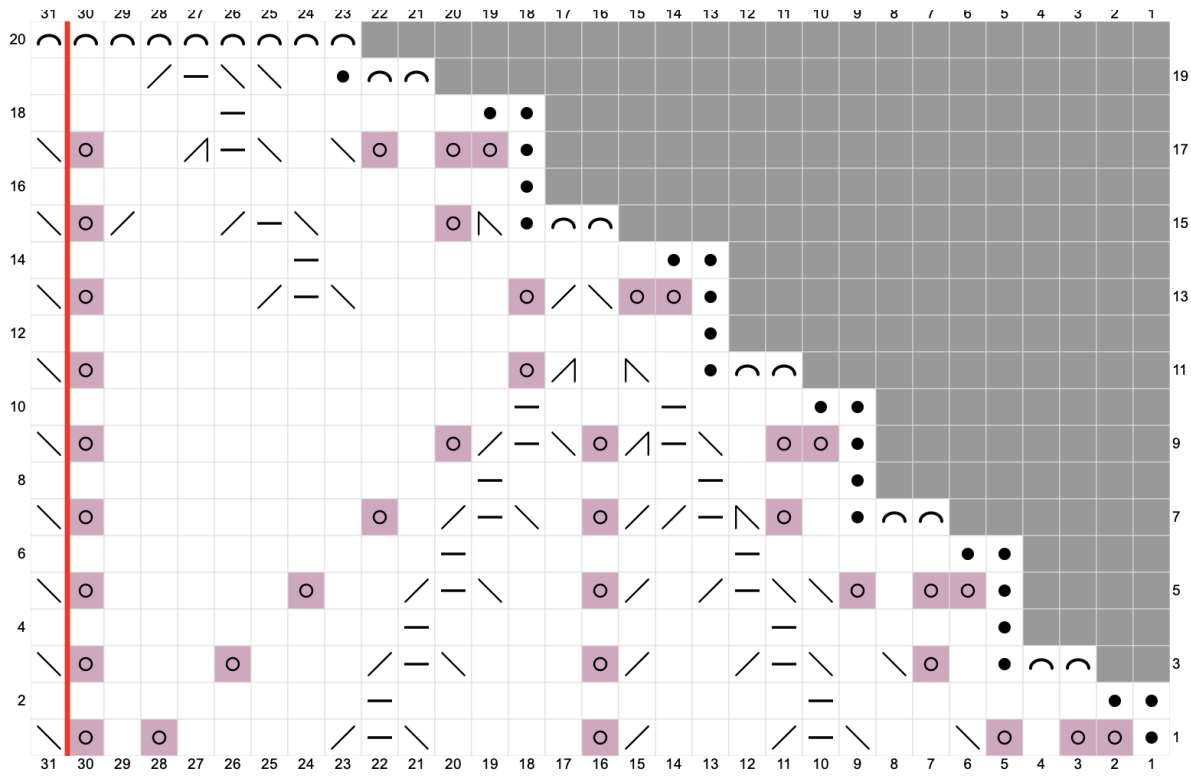
SECOND PART



Work Rows 1 to 20 for a total of 18 times.

Importante note: after the 18th repeat you must have 10 sts remaining after the st marker. If you have 11 that's ok but if you have less or more sts, DO NOT work the Third Part, instead repeat Rows 1 to 20 from Second Part until all the stitches from the main part are knitted and then bind off all the sts.

THIRD PART



Note: Row 19: If you had 11 sts remaining before the Third Part: after the marker, **K2TOG**, turn