



**KNITTING PATTERN**

# Meadow

## Sweater

**Design: Faunaknit | Hobbii Design**

## MATERIALS

### Friends Wool:

- 2 (2) 2 (2) skeins of Sapphire (85)
- 2 (2) 2 (2) skeins of French blue (84)
- 2 (2) 2 (2) skeins of Cornflower (83)
- 8 (9) 9 (10) skeins of Buckthorn (29)
- 2 (3) 3 (3) skeins of Aqua (91)
- 2 (2) 2 (2) skeins of Turquoise (94)

Circular needles 3.5 mm (US 4), 80 cm (31.5")

Circular needles 3.5 mm (US 4), 40 cm (16")

Stitch markers

## YARN QUALITY

 **Friends Wool**, Hobbii

100 % Wool

50 g (1.75 oz) = 100 m (109 yds)

## GAUGE

10 cm x 10 cm (4" x 4") = 22 sts x 22 rows

## ABBREVIATIONS

k – knit

p – purl

st – stitch

rnd – round

tot – total

dec – decrease

k2tog – knit 2 stitches together

X – round with raglan decreasing

\* – in the repeat means: pay attention to further explanation in the text

## SIZE

S (M) L (XL)

## MEASUREMENTS

Circumference: 87 (98) 109 (120) cm /  
34.2" (98") 42.9" (47.2")

Length: approx. 66 (67.5) 72 (77) cm  
25.9" (26.5") 28.3" (30.3")

## PATTERN INFORMATION

Meadow sweater is a soft and cozy sweater, knitted from the bottom up.

The sweater is knitted in stockinette stitch with some parts with texture/pattern, and with fringes/tassels at the bottom of the body and cuffs.

Level: Experienced

## HASHTAGS FOR SOCIAL MEDIA

#hobbiimeadow

#hobbiidesign

## BUY THE YARN HERE

<https://shop.hobbii.com/meadow-sweater>



## QUESTIONS

If you have any questions regarding this pattern, please feel free to email us at [support@hobbii.com](mailto:support@hobbii.com)

Please make sure to include the pattern's name and number.

Happy Crafting!



# Pattern



## INFO AND TIPS

The sweater can be made shorter/longer by choosing the length of a larger/smaller size. If you knit, for example, a short size L, you can easily follow the length of size S by not knitting the round in repeat A marked S. This can also be done for shorter/longer sleeves. Note that you must still follow the number of stitches on the needle and that repeat C must be knitted to the size you have chosen regardless of the length of your garment.

The various pattern elements in the repeat are not directly opposite each other so that it should be easier to do the raglan decreases. Follow the raglan dec as described and adjust the pattern further on the round after the dec to the best of your ability. As the various pattern parts do not depend on each other's position, it is more important that the round being knitted matches the round immediately below (see photo)



## Measurements

### Repeat A x 2 in height:

Size S: 45.5 cm (17.9")

Size M: 46 cm (18.1")

Size L: 49 cm (19.2")

Size XL: 52 cm (20.4")

### Repeat B sleeves:

Size S: 40 cm (15.7")

Size M: 40 cm (15.7")

Size L: 43 cm (16.9")

Size XL: 43 cm (16.9")

### Repeat C yoke:

Size S: approx. 17.5 cm (6.8")

Size M: approx. 18.5 cm (7.2")

Size L: approx. 20 cm (7.8")

Size XL: approx. 22 cm (8.6")

**Length to armhole:** 48.5 (49) 52 (55) cm

19" (19.2") 20.4" (21.6")

**Full length:** approx. 66 (67.5) 72 (77) cm

25.9" (26.5") 28.3" (30.3")

## BODY

Cast on 192 (216) 240 (264) sts on circular needles 3.5 - 80 cm (US 4 - 31.5").

Knit in moss stitch: k1/p1 until the end of the rnd, and opposite on the next round.

Repeat for approx. 3 cm (1.1").

Knit the entire repeat A. Then knit 1 rnd in base color (29) before working repeat A once.

Place a marker at the beginning of the rnd and at stitch number: 108 (114) 120 (126).

On rnd 55 (57 in size XL) in repeat A cast off/put on a stitch holder 9 sts on each side of the marker.

The work now measures approx. 48.5 (49) 52 (55) cm / 19" (19.2") 20.4" (21.6").

Put the work aside and knit the sleeves.

## SLEEVES

Cast on 72 (72) 96 (96) sts in base color (29) on circular needles 3.5 - 40 cm (US 4 - 15.7").

Knit in moss stitch: k1/p1 until the end of the rnd, and opposite on the next rnd, repeat for

approx. 3 cm (1.1").

Knit the entire repeat A to the first rnd marked 48. This rnd should not be worked in the next repeat.

Then work 1 rnd in base color (29) before working repeat A once more, but finish on the second rnd marked 48 \*\* *Finish*.

Note that different rounds are knitted on the different sizes.

At rnd 48 in repeat A for the second time (after 2 knitted repeat-heights), cast off 9 sts on each side of the marker centered under the arm.

The work now measures 43 (43) 46 (46) cm / 15.7" (15.7") 16.9" (16.9"). Knit 1 more sleeve in the same way.

## YOKE

Read the entire section before knitting further:

Insert the sleeves onto the body and count the stitches.

Stitch count is now 264 (288) 360 (384).

Knit 1 rnd in the base color (29) and cast off evenly: 32 (15) 32 (32) sts.

Total number of stitches is now 232 (273) 328 (352) sts.

**Raglan decrease:** Place a marker in each join between body and sleeves (front and back: 4 markers in total).

The beginning of the rnd is now in the join at the back of the right shoulder, after the first raglan decrease on the right shoulder.

Knit repeat C - Note that the different sizes have different lengths. All sizes start on column 1 in the repeat.

*Rounds marked with \* are not worked in the size marked:*

For example, rnd 3 in size S is not knitted.

Knit repeat C for approx.:

Size S: 17.5 cm (6.8")

Size M: 18.5 cm (7.2")

Size L: 20 cm (7.8")

Size XL: 22 cm (8.6")

At the same time, 1 st is cast off on each side of the markers. This is the raglan increase marked with an X in the repeat.

Raglan is worked by knitting 2 sts together, then k1 before the marker. On the other side of the marker k1 and k2tog.

Note that you should knit 1 rnd between every decreasing rnd/rnd marked with an X.

Start decreasing in rnd 1 in repeat C. Continue with the pattern on the rnd through the raglan decreases and continue with the pattern as far as possible. It may be necessary to change to a shorter circular needle/40 cm (15.7") on the way, when the work approaches the neck.

## NECK

After finishing repeat C, the number of stitches is now 72 (89) 136 (152) sts. Count the sts and knit 1 rnd in the base color (29). Then knit 1 rnd while dec 0 (0) 40 (52) for a total of 72 (89) 96 (100) sts.

Knit 1 rnd in the base color (29), then work the neck in moss stitch k1/p1 in rnd 1, and opposite on the next rnd.

Repeat for approx. 1.5-2 cm or desired length (0.5"-0.7") before casting off the neck. For a long neck work the neck for approx. 20 cm (7.8") or desired length, before casting off.

## FRINGES

Fringes on the sleeves and at the bottom edge of the body: Wrap thread around your hand or an object and cut so that the finished threads measure approx. 15-20 cm (5.9-7.8"). Use the yarn that is left over after the sweater has been finished. Place one of the threads twice in your hand, and thread the loop twice through a darning needle.

Then insert the darning needle through the bottom round/cast-on edge of the sleeves/body, remove the needle and insert the ends of the thread through the loop and tighten carefully. Do this all the way around the work.

Finally, each fringe is divided and tied together with a half fringe next to it. Repeat the entire work around.

Fasten ends, sew to close under the arms, wet/steam the work and block according to the measurements in the introduction.

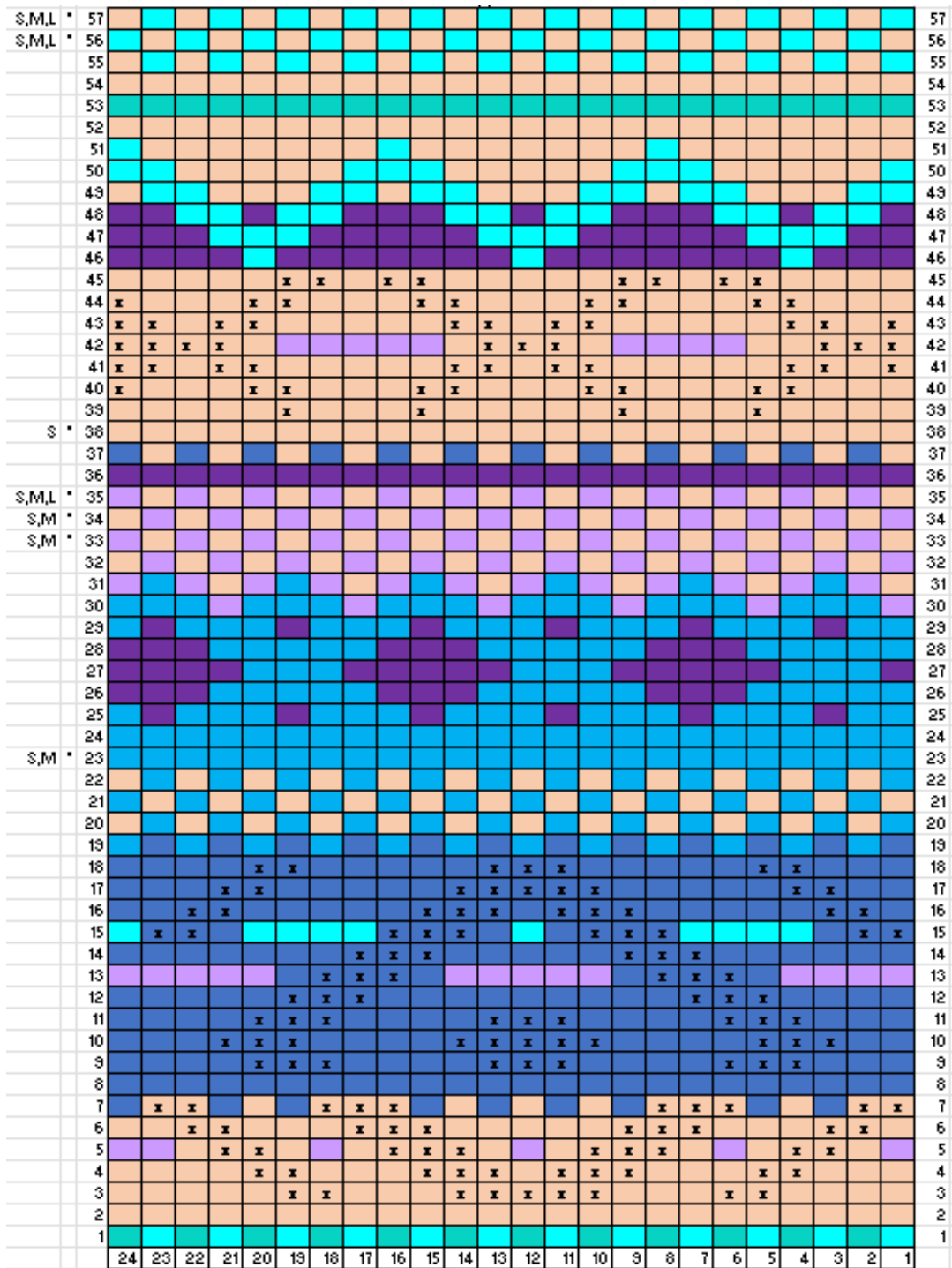
## Have a nice trip in your new Meadow sweater!

Faunaknit





Repeat A



Repeat B - Sleeves

Avslutning **	48																										49		
	48																											48	
S,M *	47																											47	
	46																											46	
	45																											45	
	44																											44	
	43																											43	
	42																											42	
	41																											41	
S,M *	40						*	*		*	*						*	*			*	*						40	
	39	*				*	*			*	*					*	*			*	*							39	
	38	*	*		*	*				*	*				*	*				*	*				*	*		38	
	37	*	*	*	*					*	*	*			*	*				*	*	*			*	*	*	37	
	36	*	*		*	*				*	*	*	*			*	*			*	*	*			*	*	*	36	
	35	*			*	*				*	*				*	*				*	*			*	*	*		35	
	34				*				*	*					*			*		*								34	
S,M **	33																											33	
	32																											32	
	31																											31	
S,M *	30																											30	
S,M *	29																											29	
	28																											28	
	27																											27	
	26																											26	
	25																											25	
	24																											24	
	23																											23	
	22																											22	
	21																											21	
	20																											20	
S,M *	19																											19	
	18																											18	
	17																											17	
	16																											16	
	15					*	*				*	*	*			*	*	*			*	*			*	*		15	
	14			*	*					*	*	*	*	*			*	*	*			*	*		*	*		14	
	13	*	*	*						*	*	*	*	*		*	*	*	*	*	*	*	*	*	*	*	*	*	13
	12								*	*	*					*	*	*										12	
	11	*	*	*	*					*	*	*	*	*		*	*	*	*	*	*	*	*	*	*	*	*	*	11
S,M *	10								*	*	*				*	*	*	*	*	*	*	*	*	*	*	*	*	10	
	9							*	*	*			*	*	*		*	*	*	*	*	*	*	*	*	*	*	9	
	8					*	*	*	*	*	*	*	*	*		*	*	*	*	*	*	*	*	*	*	*	*	8	
	7					*	*	*	*	*	*	*	*	*		*	*	*	*	*	*	*	*	*	*	*	*	7	
	6			*	*			*	*	*	*	*	*		*	*	*	*	*	*	*	*	*	*	*	*	*	6	
	5	*	*		*	*		*	*	*	*	*	*		*	*	*	*	*	*	*	*	*	*	*	*	*	5	
	4				*	*			*	*	*	*	*	*	*	*	*	*	*	*	*	*	*	*	*	*	*	4	
S,M *	3				*	*			*	*	*	*	*	*	*	*	*	*	*	*	*	*	*	*	*	*	*	3	
	2																											2	
	1	*	*	*	*	*	*	*	*	*	*	*	*	*	*	*	*	*	*	*	*	*	*	*	*	*	*	1	
		24	23	22	21	20	19	18	17	16	15	14	13	12	11	10	9	8	7	6	5	4	3	2	1				



### Repeat C - The yoke

	X	48																																					48	
	S,M,L	X	47																																					47
			46																																					46
	S,M	X	45																																					45
			44																																					44
	X	43																																						43
			42																																					42
	X	41																																						41
			40																																					40
	X	39																																						39
			38																																					38
	X	37																																						37
			36																																					36
	X	35																																						35
			34																																					34
	X	33																																						33
			32																																					32
	X	31																																						31
			30																																					30
	X	29																																						29
			28																																					28
	X	27																																						27
	S,M,L	26	*				*	*				*	*				*	*			*	*			*	*			*	*			*	*			*	*	26	
	X	25	*	*		*	*				*	*		*	*			*	*				*	*			*	*			*	*		*	*		*	*		25
		24	*	*	*	*	*				*	*	*	*			*	*	*	*			*	*	*	*			*	*	*	*		*	*	*	*	*		24
	X	23	*	*		*	*				*	*		*	*			*	*				*	*			*	*			*	*		*	*		*	*		23
	S,M	22	*			*	*				*	*		*	*			*	*				*	*			*	*			*	*		*	*		*	*		22
	X	21				*	*		*	*				*	*			*	*		*	*			*	*		*	*			*	*		*	*		*	*	21
		20																																						20
	X	19																																						19
		18																																						18
	S,M	X	17																																					17
	S,M	16																																						16
	S	X	15																																					15
			14																																					14
	X	13																																						13
			12																																					12
	X	11																																						11
			10																																					10
	X	9																																						9
			8																																					8
	X	7																																						7
			6																																					6
	X	5																																						5
	S,M,L	4																																						4
	S	X	3																																					3
			2																																					2
	X	1																																						1
			24	23	22	21	20	19	18	17	16	15	14	13	12	11	10	9	8	7	6	5	4	3	2	1														