



KNITTING PATTERN

Daisy

Top

Design: AnxiousGirlKnits | Hobbii Design

MATERIALS

Friends Cotton 8/6

C1: 2 (2) 3 (3) skeins of col Pistachio, 108

C2: 2 (2) 3 (3) skeins of col Baby Pink, 51

C3: 1 (1) 1 (1) skein of col White, 01

C4: 1 (1) 1 (1) skein of col Lemon, 23

Circular needles 3.5mm (US4) 40cm

Stitch markers

Darning needle

YARN QUALITY

 **Friends Cotton 8/6**, Hobbii

100% cotton

50 g / 1.75 oz = 105 m / 115 yds

GAUGE

21 sts x 30 rows = 10 cm x 10 cm / 4" x 4"

ABBREVIATIONS

K = knit

P = Purl

St(s) = stitch(es)

C1/C2/C3/C4 = colour 1/2/3/4

RS = right side

WS = wrong side

CO = cast off

SL1 = slip 1st purl wise

SSK = slip, slip, knit

PM = place marker

GSR = German short row

K2tog = knit 2 stitches together

Kfb = knit front and back of the stitch

SIZE

S (M) L (XL)

MEASUREMENTS

Width: 42 (46) 51 (55) cm / 16.5" (18.1") 20.1" (21.6")

Length at side: 24.5 (28) 31.5 (35) cm / 9.6" (11") 12.4" (13.8")

PATTERN INFORMATION

This top is knitted bottom up in the flat using stockinette stitch. Intarsia technique is used to change colour. The flower design is also worked using intarsia, following a chart. Decreases are made to shape the armholes whilst using German short rows to shape the neckline. The straps are made using i-cords, and the hem hand stitched up to make a folded hem.

This pattern is recommended for advanced knitters due to the intarsia colour work, German short rows and folded hem.

HASHTAGS FOR SOCIAL MEDIA

#hobbiidesign

#anxiousgirlknits

#hobbiidaisy

BUY THE YARN HERE

<https://shop.hobbii.com/daisy-top>

QUESTIONS

If you have any questions regarding this pattern, please feel free to email us at support@hobbii.com

Please make sure to include the pattern's name and number.

Happy Crafting!

Pattern



INFO AND TIPS

When working the flower, you can either split the C1, C2 and C3 balls into 2 balls or, just use the two ends on the ball, you will also need to make one more small ball of C3 of a couple metres for the top edge of the flower as you will have 3 balls on the go of C3.

FRONT

Using 3.5mm (US 4) cable cast on 44 (49) 54 (58)st in C1. To make a clean change of colour, cast on 1 more st in C1. Lay C2 over the left needle next to your C1 sts, and hold together with your fingers rather a slip knot. Pass the extra C1 stitch you made over this C2 like you were casting off, and pull the C1 tight, this should now have secured that C2 yarn in place. Continue to cast 43 (48) 53 (57)st in C2. You will have 88 (98) 108 (116)st on the needle.

Your next row will be a RS row, you will be working this top in stockinette with an intarsia colour change in the middle. To do the colour change, once you have worked all the sts in a colour and come to start the next, twist the colours on the WS around each other so they interlock. This will stop any holes, then you continue to work in the next colour.

Work 3 rows, your 4th row will be a WS row, p the first and last st on this row, but k all the rest. This row will be your new hem, this marks the fold line you will need at the end of the project.

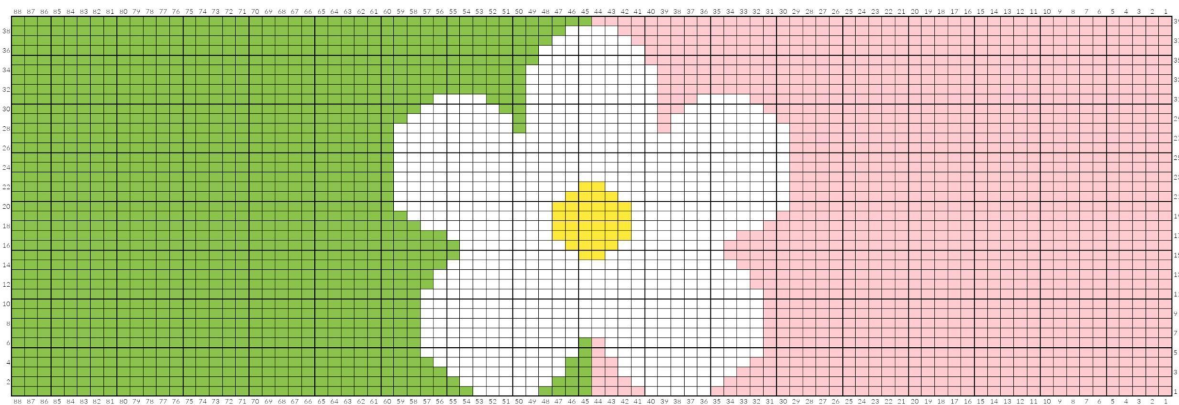
Work until the piece measures 8 (11) 13 (15)cm/3.1" (4.3") 5.1" (5.9") from the purl edge, make note of how many rows you have done so the back is the same. Make sure your last row was a WS row. If you want to lengthen or shorten do it here, but remember this may mean you need more/less yarn.

Time to start the flower design. You will start at the bottom right of the chart, row 1, st 1, and work right to left on the RS rows, and left to right on the WS rows. The colour changes will be done with intarsia so that you don't have to carry the yarns across the back. This should make the daisy lay nice and flat.

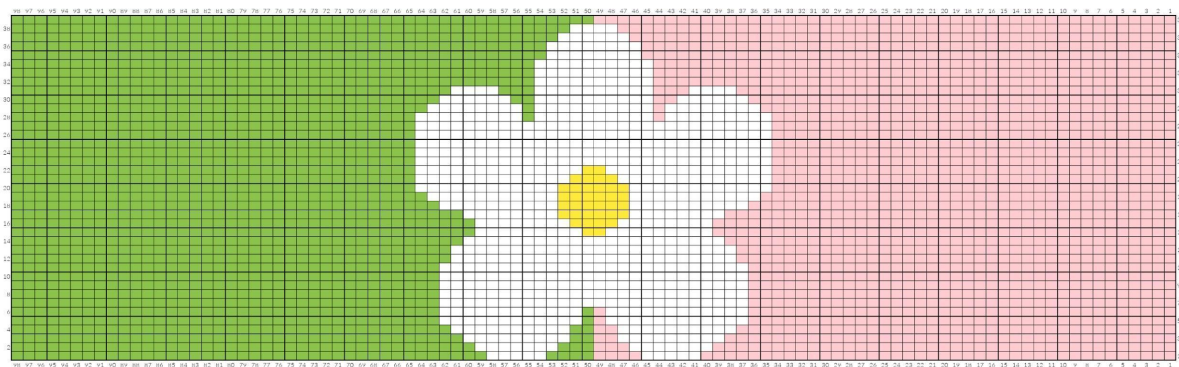


When you are attaching the new colours for the flower initially you can't twist to stop holes. To help I found it works best to catch the new colour on the WS, a stitch before you need to change colour. You do this by wrapping the new colour around the existing, then when you stitch the last stitch in the existing colour it should catch it in the purl bump on the WS.

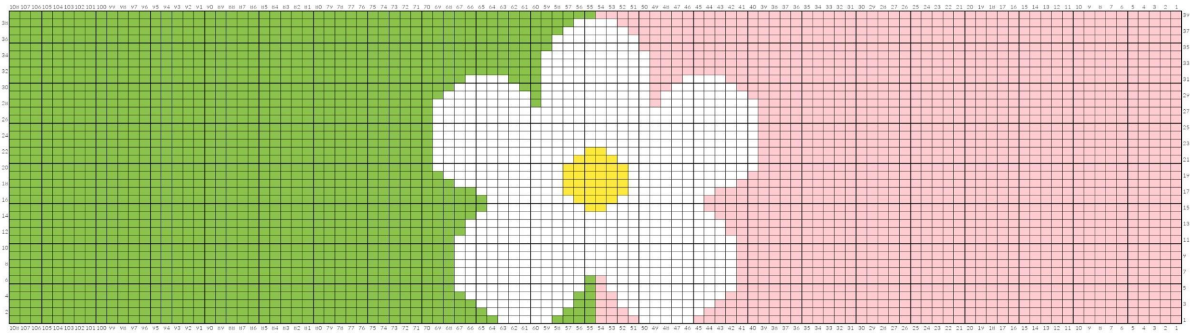
Size S



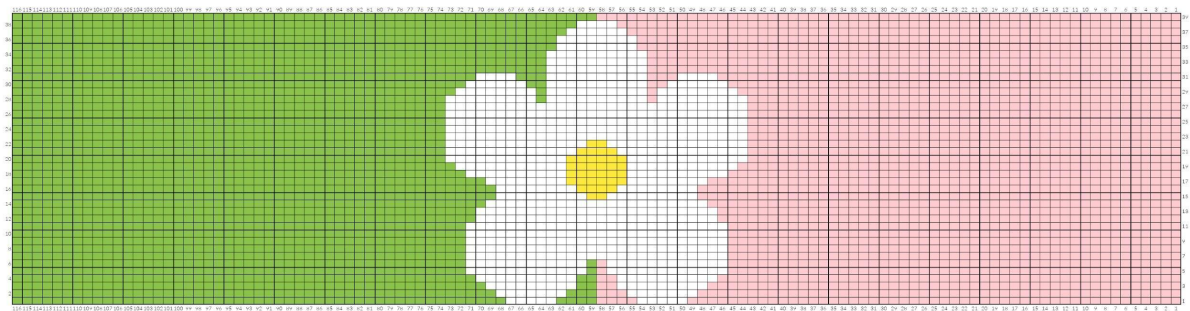
Size M



Size L



Size XL



Once you have finished the flower, work as earlier with an intarsia colour change in the middle for 12 (14) 18 (22) rows, (row 39 on the graph is the 1st row of the 12 (14) 18 (22) rows) The piece should measure 24.5 (28) 31.5 (35) cm/9.6" (11") 12.4" (13.8") from the purl hem if you haven't changed the length.

Your next row should be a RS row, you will now start to shape the armhole and neckline.

Row 1 RS: BO 5 (5) 7 (7)st, k across the rest of st.

Row 2 WS: BO 5 (5) 7 (7)st, p across the rest of st

You will have 78 (88) 94 (102)st remaining, count in 27 (30) 32 (36)st from each side and place a marker. You will do gsr to shape the neckline whilst also decreasing to shape the armhole.

Row 3 RS: SL1, SSK, k to the first pm, turn gsr (you can remove this marker)

Row 4 WS: P all

Row 5 RS: SL1, SSK, k to 1st before the double leg gsr stitch, turn gsr (you will have 1st between each gsr)

Row 6 WS: P all

Repeat row 5+6, 6 (7) 8 (9) more times (you will have done a total of 8 (9) 10 (11) gsr) you should have 4st left to the next double leg gsr.

Row 19 (21) 23 (25) RS: SL1, SSK, k across all sts working the double leg st as one sts, till you have 3st remaining, k2tog, k1

Row 20 (22) 24 (26) WS: SL1, p to the pm, turn gsr (you can remove this marker)

Row 21 (23) 25 (27) RS: k till 3st remain, k2tog, k1

Row 22 (24) 26 (28) WS: SL1, p to 1st before the double leg gsr stitch, turn gsr (you will have 1st between each gsr)

Row 23 (25) 27 (29) RS: k till 3st remain, k2tog, k1

Repeat row 22+23 (24+25) 26+27 (28+29), 6 (7) 8 (9) more times (you will have done a total of 8 (9) 10 (11) gsr) you should have 3st left to the next double leg gsr.

Row 36 (40) 44 (48) WS: SL1, p across all sts working the double leg st as one sts

Row 37 (41) 45 (49) RS: K2, kfb, k1, pass the newly-made st from the kfb over the k1 st, cast off the remaining sts till 2st remain on the left needle (3 including the st in your right needle), k2.

You will now have 3 st remaining on each side of the top, this will be where you make your icord straps.

Put the 3st not attached to yarn on hold. Working the 3st that are attached to the yarn, make an icord for roughly about 45 (48) 52 (55)cm/17.7" (18.9") 20.5" (21.7"). You can make this longer or shorter depending on your preference. Cast off and cut the yarn.

Attach the correct colour to the 3st you put on hold, and make another i cord the same length and cast off.

BACK

Using 3.5mm (us 4) cable cast on 44 (49) 54 (58)st in C2. To make a clean change of colour, cast on 1 more st in C2. Lay C1 over the left needle next to your C2 sts, and hold together with your fingers rather a slip knot. Pass the extra C2 stitch you made over this C1 like you were casting off, and pull the C2 tight, this should now have secured that C1 yarn in place. Continue to cast 43 (48) 53 (57)st in C1. You will have 88 (98) 108 (116)st on the needle.

Your next row will be a RS row, as you did with the front work in stockinette with an instasia colour change in the middle. Work 3 rows, your 4th row will be a WS row, p the first and last st on this row, but k all the rest. This row will be your new hem, this marks the fold line you will need at the end of the project.

Work in stockinette until your back piece has the same amount of rows as the front before you start decreasing for the armholes and neckline shaping. This should be 24.5 (28) 31.5 (35)cm/9.6" (11") 12.4" (13.8") from the purl hem if you haven't changed the length.

Your next row should be a RS row, you will now start to shape the armhole and neckline.

Row 1 RS: BO 5 (5) 7 (7)st, k across the rest of st.

Row 2 WS: BO 5 (5) 7 (7)st, p across the rest of st

You will have 78 (88) 94 (102)st remaining, count in 27 (30) 32 (36)st from each side and place a marker. You will start to do gsr to shape the neckline whilst also decreasing to shape the armhole.

Row 3 RS: SL1, SSK, k to the first pm, turn gsr (you can remove this marker)

Row 4 WS: P all

Row 5 RS: SL1, SSK, k to 1st before the double leg gsr stitch, turn gsr (you will have 1st between each gsr)

Row 6 WS: P all

Repeat row 5+6, 6 (7) 8 (9) more times (you will have done a total of 8 (9) 10 (11) gsrs) you should have 4st left to the next double leg gsr.

Row 19 (21) 23 (25) RS: SL1, SSK, k across all sts working the double leg st as one sts, till you have 3st remaining, k2tog, k1

Row 20 (22) 24 (26) WS: SL1, p to the pm, turn gsr (you can remove this marker)

Row 21 (23) 25 (27) RS: k till 3st remain, k2tog, k1

Row 22 (24) 26 (28) WS: SL1, p to 1st before the double leg gsr stitch, turn gsr (you will have 1st between each gsr)

Row 23 (25) 27 (29) RS: k till 3st remain, k2tog, k1

Repeat row 22+23 (24+25) 26+27 (28+29), 6 (7) 8 (9) more times (you will have done a total of 8 (9) 10 (11) gsrs) you should have 3st left to the next double leg gsr.

Row 36 (40) 44 (48) WS: SL1, p across all sts working the double leg st as one sts

Row 37 (41) 45 (49) RS: K2, kfb, k1, pass the newly-made st from the kfb over the k1 st, cast off the remaining sts till 2st remain on the left needle (3 including the st in your right needle), k2.

You will now have 3 st remaining on each side of the top, this will be where you make your icord straps.

Put the 3st not attached to yarn on hold. Working the 3st that are attached to the yarn, make an icord for roughly about 45 (48) 52 (55)cm/17.7" (18.9") 20.5" (21.7"). You can make this longer or shorter depending on your preference. Cast off and cut the yarn.

Attach the correct colour to the 3st you put on hold, and make another i cord the same length and cast off.

FINISHING TOUCHES

Using a needle and yarn on the RS up, you will invisible vertical seam the front and the back panels together at the side seams. Your C1 front should match up with the C1 back, and vice versa.



Once your top is sewn together, you will now hem it. Using the purl line as your natural fold, fold the cast on edge up to lay flat on the WS of the work. Start at a colour change point so you can do all of C1 then C2 or vice versa. Looking at it from the WS of the work with the top the right way up, start at the fold line (this will look like a row of k on the WS) count up 4 "n" shaped purl bumps (not the "u" shaped) and put your sewing needle through top to bottom. Then fold the cast on edge up so that the cast on edge is near the needle, and find the corresponding stitch on the cast on edge. Put the needle top to bottom through this stitch and pull the needle all the way through. (Pictured). Then repeat this the whole way around the hem changing colour when you come to the next colour.

Once the whole hem is sewn just weave in all the ends and block! The hem might be folding up a bit but blocking will stop this.

Enjoy!

Mia - Anxiousgirlknits

