



CROCHET PATTERN

# Alice

Top

Design: Jane Green - Beautiful Crochet Stuff | Hobbii Design


## MATERIALS

1 (1, 1, 2, 3, 3, 3) skeins of Friends Wheel, color White (02)

1 (2, 2, 2, 2, 3, 4) skeins of Friends Wheel, color Black (124)

Crochet hook 3 mm (D)

## YARN QUALITY

 **Friends Wheel**, Hobbii  
55% Cotton, 45% Acrylic  
100 g = 400 m (437 yds)

## GAUGE

10 cm x 10 cm (4" x 4") = 24 sts x 14 rows

## ABBREVIATIONS

sl st = slip stitch  
ch = chain  
sc = single crochet  
dc = double crochet

## SIZE

XS, (S, M, L, XL, XXL, XXXL)

## MEASUREMENTS

Width: 34 (38, 42, 46, 50, 54, 58) cm / 13.4" (15", 16.5", 18", 19.7", 21.3", 22.8")

Length (without straps): 34 (38, 42, 46, 50, 54, 58) cm / 13.4" (15", 16.5", 18", 19.7", 21.3", 22.8")

## PATTERN INFORMATION

A simple pattern will help you to create this cool black and white top. The pattern does not contain a photoguide but is beginner-friendly if you know how to crochet single crochet and double crochet stitches.

## HASHTAGS FOR SOCIAL MEDIA

#hobbiialice  
#hobbiidesign

## BUY THE YARN HERE

<https://shop.hobbii.com/alice-top>

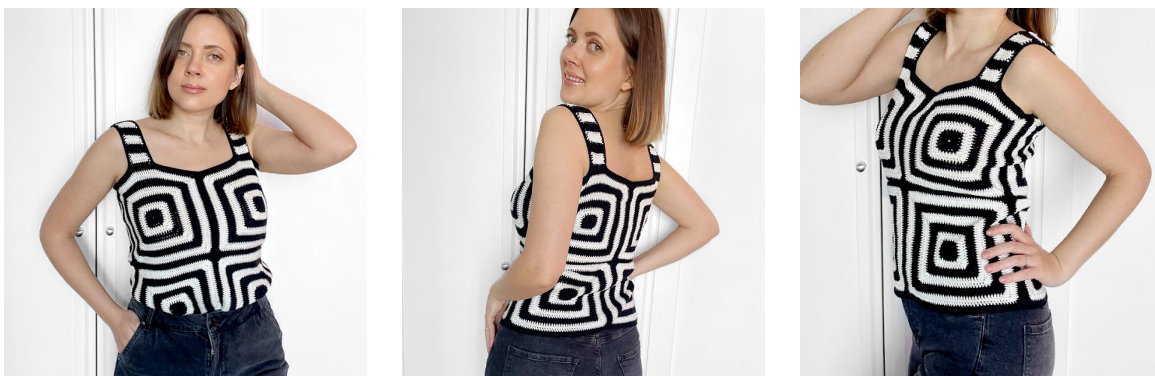
## QUESTIONS

If you have any questions regarding this pattern, please feel free to email us at [support@hobbii.com](mailto:support@hobbii.com)  
Please make sure to include the pattern's name and number.

Happy Crafting!



# Pattern



## INFO AND TIPS

### How to find your size

Measure the fullest part of your chest, subtract 10 and divide by 4. For example, the model measures 88 cm around the chest:  $88 \text{ cm} - 10 = 78 \text{ cm}$ .  $78 \text{ cm} / 4 = 19,5 \text{ cm}$ . The model is a size S.

If you are between sizes, size down for a more fitted look or up for a looser fit.

NOTE: the main color of the top depends on your size.

Size	Rounds	Square size	Width / length of top	Main color
XS	11	17 cm / 6.7"	34 / 13.4"	02
S	12	19 cm / 7.5"	38 / 15"	124
M	13	21 cm / 8.3"	42 / 16.5"	124
L	14	23 cm / 9"	46 / 18"	02
XL	15	25 cm / 9.8"	50 / 19.7"	02
XXL	16	27 cm / 10.6"	54 / 21.3"	124
XXXL	17	29 cm / 11.4"	58 / 22.8"	124

## SQUARE PATTERN

Make 8 squares.

With col 124 ch-4, join with sl st to the 1st ch

**Round 1** (col. 124): ch-3 (counts as a stitch), 15 dc into the circle, join with sl st to top of ch-3

**Round 2** (col. 124): ch-3 (counts as a stitch), dc in the same stitch, dc in next 3 dc, \* 3 dc in next dc, dc in next 3 dc \*\*, repeat from \* to \*\* twice, end with dc in the 1st st, join with sl st to top of ch-3

**Round 3** (col. 02): ch-3 (counts as a stitch), dc in the same stitch, dc in next 5 dc, \* 3 dc in next dc, dc in next 5 dc \*\*, repeat from \* to \*\* twice, end with dc in the 1st st, join with sl st to top of ch-3

**Round 4** (col. 02): ch-3 (counts as a stitch), 2 dc in the same stitch, dc in next 7 dc, \* 5 dc in next dc, dc in next 7 dc \*\*, repeat from \* to \*\* twice, end with 2 dc in the 1st st, join with sl st to top of ch-3

**Round 5** (col. 124): ch-3 (counts as a stitch), 2 dc in the same stitch, dc in next 11 dc, \* 5 dc in next dc, dc in next 11 dc \*\*, repeat from \* to \*\* twice, end with 2 dc in the 1st st, join with sl st to top of ch-3

**Round 6** (col. 124): ch-3 (counts as a stitch), 2 dc in the same stitch, dc in next 15 dc, \* 5 dc in next dc, dc in next 15 dc \*\*, repeat from \* to \*\* twice, end with 2 dc in the 1st st, join with sl st to top of ch-3

**Round 7** (col. 02): ch-3 (counts as a stitch), 2 dc in the same stitch, dc in next 19 dc, \* 5 dc in next dc, dc in next 19 dc \*\*, repeat from \* to \*\* twice, end with 2 dc in the 1st st, join with sl st to top of ch-3

**Round 8** (col. 02): ch-3 (counts as a stitch), 2 dc in the same stitch, dc in next 23 dc, \* 5 dc in next dc, dc in next 23 dc \*\*, repeat from \* to \*\* twice, end with 2 dc in the 1st st, join with sl st to top of ch-3

**Round 9** (col. 124): ch-3 (counts as a stitch), 2 dc in the same stitch, dc in next 27 dc, \* 5 dc in next dc, dc in next 27 dc \*\*, repeat from \* to \*\* twice, end with 2 dc in the 1st st, join with sl st to top of ch-3

**Round 10** (col. 124): ch-3 (counts as a stitch), 2 dc in the same stitch, dc in next 31 dc, \* 5 dc in next dc, dc in next 31 dc \*\*, repeat from \* to \*\* twice, end with 2 dc in the 1st st, join with sl st to top of ch-3

**Round 11** (col. 02): ch-3 (counts as a stitch), 2 dc in the same stitch, dc in next 35 dc, \* 5 dc in next dc, dc in next 35 dc \*\*, repeat from \* to \*\* twice, end with 2 dc in the 1st st, join with sl st to top of ch-3

*XS proceed to joining*

**Round 12** (col. 02): ch-3 (counts as a stitch), 2 dc in the same stitch, dc in next 39 dc, \* 5 dc in next dc, dc in next 39 dc \*\*, repeat from \* to \*\* twice, end with 2 dc in the 1st st, join with sl st to top of ch-3

*S proceed to joining*

**Round 13** (col. 124): ch-3 (counts as a stitch), 2 dc in the same stitch, dc in next 43 dc, \* 5 dc in next dc, dc in next 43 dc \*\*, repeat from \* to \*\* twice, end with 2 dc in the 1st st, join with sl st to top of ch-3

*M proceed to joining*

**Round 14** (col. 124): ch-3 (counts as a stitch), 2 dc in the same stitch, dc in next 47 dc, \* 5 dc in next dc, dc in next 47 dc \*\*, repeat from \* to \*\* twice, end with 2 dc in the 1st st, join with sl st to top of ch-3

*L proceed to joining*

**Round 15** (col. 02): ch-3 (counts as a stitch), 2 dc in the same stitch, dc in next 51 dc, \* 5 dc in next dc, dc in next 51 dc \*\*, repeat from \* to \*\* twice, end with 2 dc in the 1st st, join with sl st to top of ch-3

*XL proceed to joining*

**Round 16** (col. 02): ch-3 (counts as a stitch), 2 dc in the same stitch, dc in next 55 dc, \* 5 dc in next dc, dc in next 55 dc \*\*, repeat from \* to \*\* twice, end with 2 dc in the 1st st, join with sl st to top of ch-3

*XXL proceed to joining*

**Round 17** (col. 124): ch-3 (counts as a stitch), 2 dc in the same stitch, dc in next 59 dc, \* 5 dc in next dc, dc in next 59 dc \*\*, repeat from \* to \*\* twice, end with 2 dc in the 1st st, join with sl st to top of ch-3

## JOINING

1. Lay 2 squares together with right sides facing each other and wrong sides out and slip stitch through both corners

2. Insert your hook into the next stitch through both squares, and slip stitch through them. Repeat the 2nd step to the end of the row.

Stitch all 8 squares together in a tube.

Try on the top and mark where to place the shoulders straps.

## SHOULDERS STRAPS

Crochet 2 rows with each color and repeat throughout the work.

Connect the yarn to the marked place on the front and start crocheting. Choose the color matching the edge of the top. The first and the last rows of the strap should be the same color.

Row 1: ch-3 (counts as a stitch), dc in next 9 dc

*Change color*

Row 2: ch-3 (counts as a stitch), turn, dc in next 9 dc

Row 3: ch-3 (counts as a stitch), turn, dc in next 9 dc

*Change color*

Row 4: ch-3 (counts as a stitch), turn, dc in next 9 dc

Row 5 : ch-3 (counts as a stitch), turn, dc in next 9 dc

Repeat rows 2-5. Crochet until desired length. Finish with Row 2-4.

Make the second strap and fasten them to the backside.

## **TRIM**

Crochet 2 rows of sc around the neckline, bottom, armholes and straps.

## **Enjoy!**

Jane Green  
Beautiful Crochet Stuff