



**KNITTING PATTERN**

# Lovely

## Laptop sleeve

**Design: Knit Gang | Hobbii Design**




## MATERIALS

4 skeins of Friends Cotton 8/8 col. 48

Knitting needles 4 mm (US 6)  
Tapestry needle or crochet hook 4 mm (US H/6)

## YARN QUALITY

 **Friends Cotton 8/8**, Hobbii  
100% Cotton  
50 g (1.75 oz) = 75 m (82 yds)

## GAUGE

10 cm x 10 cm (4" x 4") = 22 sts x 30 rows

## ABBREVIATIONS

st/s = stitch/es  
k = knit  
p = purl  
CO = Cast On  
BO = Bind Off

## SIZE

One size

## MEASUREMENTS

Width: 40 cm / 15.7"  
Height: 25 cm / 9.8"

## PATTERN INFORMATION

Cute laptop sleeve knitted in stockinette and garter stitch to create a structured heart. The sleeve is made of two separate parts sewn together. The size can easily be adjusted. Beginner-friendly pattern.

## HASHTAGS FOR SOCIAL MEDIA

#hobbiilovely  
#hobbiidesign

## BUY THE YARN HERE

<https://shop.hobbii.com/lovely-laptop-sleeve>  
[e](#)



## QUESTIONS

If you have any questions regarding this pattern, please feel free to email us at [support@hobbii.com](mailto:support@hobbii.com)  
Please make sure to include the pattern's name and number.

Happy Crafting!

# Pattern



## INFO AND TIPS

The sleeve is made of two parts sewn together at the end.

There is one size given in the description, but you can easily adjust it to another size, just de- or increase the number of stitches according to the gauge. The number of stitches must be odd.

Stitches used in the pattern:

*Stockinette stitch:* purl on the wrong side, knit on the right side

*Garter stitch:* k in every row

## FRONT

CO 89 sts. Work 8 rows in garter stitch. Then, 14 rows in stockinette stitch. In the 15<sup>th</sup> row start work the heart motif in garter stitch as follows:

Work 44 sts in stockinette stitch, then 1 st in garter stitch and 44 sts in stockinette stitch.

Continue working the heart according to the chart.

When the heart motif is done, work 15 rows in stockinette stitch and then 8 rows in garter stitch. Fasten off.

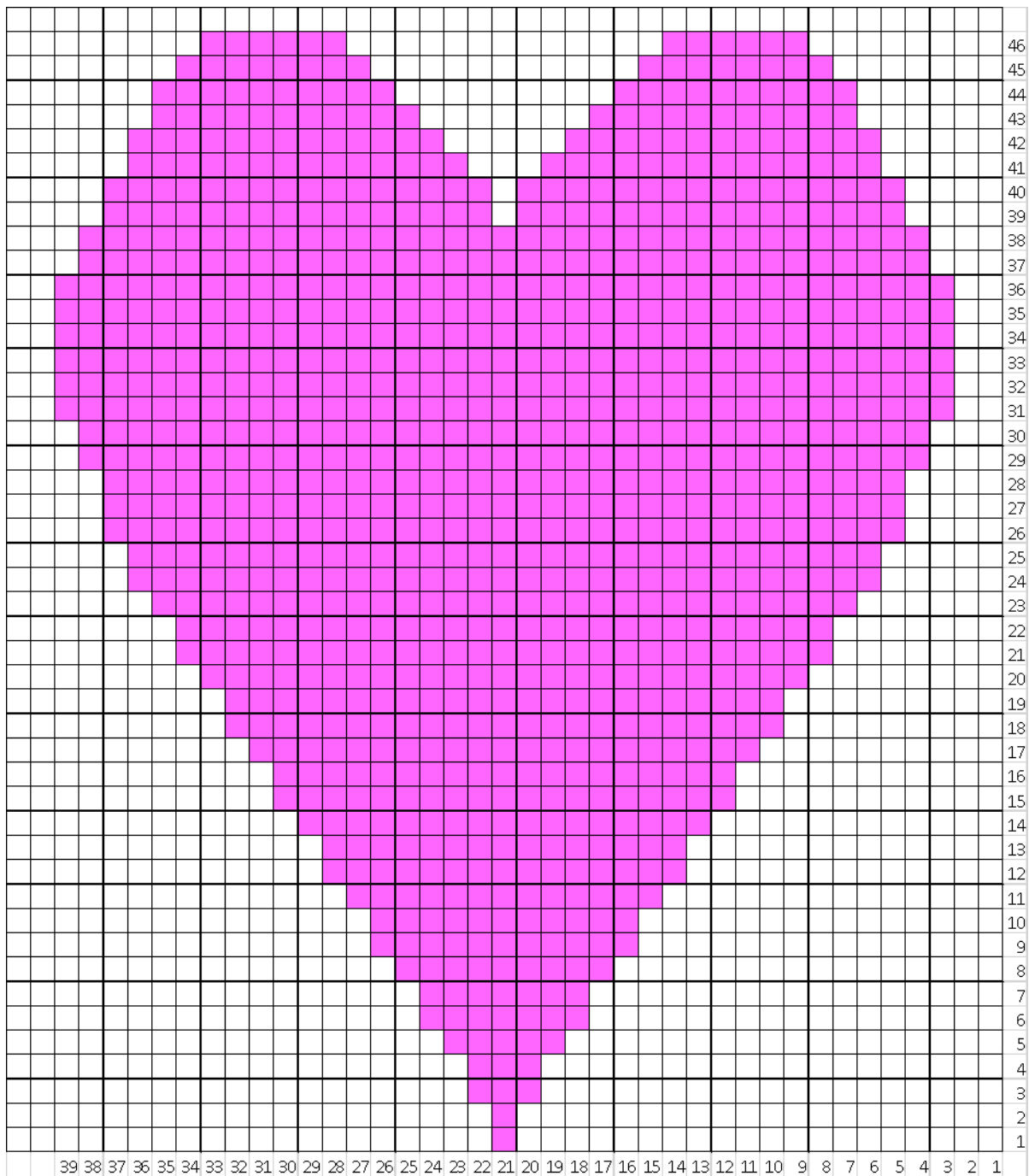
## BACK

Work like the front but without the heart motif.

## Finishing

Sew the sleeve on the wrong side using an invisible needle stitch, or using a crochet hook with a slip stitch. Cut off the ends.

CHART



**Enjoy!**  
Knit Gang