



KNITTING PATTERN

Snowfall

Vest

Design: Erica Gabriella Studio | Hobbii Design

MATERIALS

Color A: 4 (5) 5 (6) skeins of Wool Power, Off White (01)

Color B: 1 (1) 1 (1) skein of Wool Power, Burnt Caramel (21)

Circular needle 9 mm (US 15), 80-100 cm (31.5"-39.3")

Circular needle 9 mm (US 13), 40 cm (15.75")

Circular needle 10 mm (US 15), 80-100 cm (31.5"-39.3")

Stitch markers
Stitching needle
Cable needles

YARN QUALITY

 **Wool Power**, Hobbii

100 % Wool

100 g (3.52 oz) = 160 m (175 yds)

GAUGE

10 cm x 10 cm (4" x 4") = 10 sts x 15 rows
Worked with 2 yarns together in stockinette

ABBREVIATIONS

k = knit
p = purl
sts = Stitch(es)
cn = cable needle
Sl = slip stitch(es)
SM = stitch marker

SIZE

S (M) L (XL)

MEASUREMENTS

Circumference: 95 (100) 105 (110) cm / 37.4" (39.4") 41.3" (43.3")

Length: 56 (58) 60 (62) cm / 22" (22.8") 23.6" (24.4")

PATTERN INFORMATION

A beautiful cabled vest for the cold months. Designed in a soft wool yarn and a dash of color. This pattern is knitted both in the round and back and forth on circular needles. There is a chart for each size.

HASHTAGS FOR SOCIAL MEDIA

#hobbiisnowfall

#hobbiidesign

BUY THE YARN HERE

<https://shop.hobbii.com/snowfall-vest>



QUESTIONS

If you have any questions regarding this pattern, please feel free to email us at support@hobbii.com

Please make sure to include the pattern's name and number.

Happy Crafting!

Pattern



INFO AND TIPS

Mark your halfway point with a SM to indicate the side seams on 54 (56) 58 (60) stitches. Use the SM to also mark your rows to keep count. As you are switching between the colors, don't cut the yarn immediately to reduce the wastage and loose ends you have to weave in at the end.

Use the chart matching your size and follow carefully.

ABBREVIATIONS for back and front panel

 RS: Knit
WS: Purl

 RS: Purl
WS: Knit

 No sts

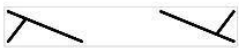
 Cast off

 Sl 1 sts, k 1, pass slipped sts over

 RS: Knit
WS: Purl

 Knit 2 sts together

 Sl 1 sts



Cable 6 front. Slip next 3 sts to cn and hold in front of work, k3, then k3 from cn



Cable 6 back. Slip next 3 sts to cn and hold in back of work, k3, then k3 from cn



Cable 4 front. Slip next 2 sts to cn and hold in front of work, k2, then k2 from cn



Cable 4 back. Slip next 2 sts to cn and hold in back of work, k2, then k2 from cn



Slip 3 sts to cn and hold in front of work, p1, k3 from cn



Slip 1 st to cn and hold in back of work, k3, p1 from cn

BODY

Rib edge

Work with two strands of yarn on 9 mm (US 15), 80-100 cm (31.5"-39.3")

Cast on 108 (112) 116 (120) stitches and work in the round

1. Row 1-4: color A
2. Row 5-6 : color B
3. Row 7-10 : color A

Switch to 10 mm (US 15), 80-100 cm (31.5"-39.3"). Knit according to the chart matching your size.

At row 33 (35) 37 (39) divide the front and back body. Let the stitches for the front piece rest, and continue knitting the back piece following the chart, back and forth on the needles.

Front piece

Put your stitches back on the 10 mm circular needles.

Knit according to the chart.

Shoulders

Sew the shoulders together. Make sure to line them so that the pattern matches.



Neck

With two strands of yarn on 9 mm (US 13), 40 cm (15.75") circular needles pick up 52 (54) 56 (58) stitches around the neckline and knit rib stitch (p1, k1) as follows:

Round 1- 2 (with color A): *p1, k1*

Round 3 (with color B): *p1, k1*

Round 4 (with color A): *p1, k1*

Round 5 (with color A): *p1, k1*

Cast off loosely or with an elastic cast off

Armholes

With two strands of yarn on 9 mm (US 13), 40 cm (15.75") circular needles

Pick up 56 (58) 60 (62) stitches around the armhole and knit rib stitch (p1, k1) as follows:

Round 1- 2 (with color A): *p1, k1*

Round 3 (with color B): *p1, k1*

Round 4 (with color A): *p1, k1*

Round 5 (with color A): *p1, k1*

Cast off

Repeat for the second armhole.



Finishing touches

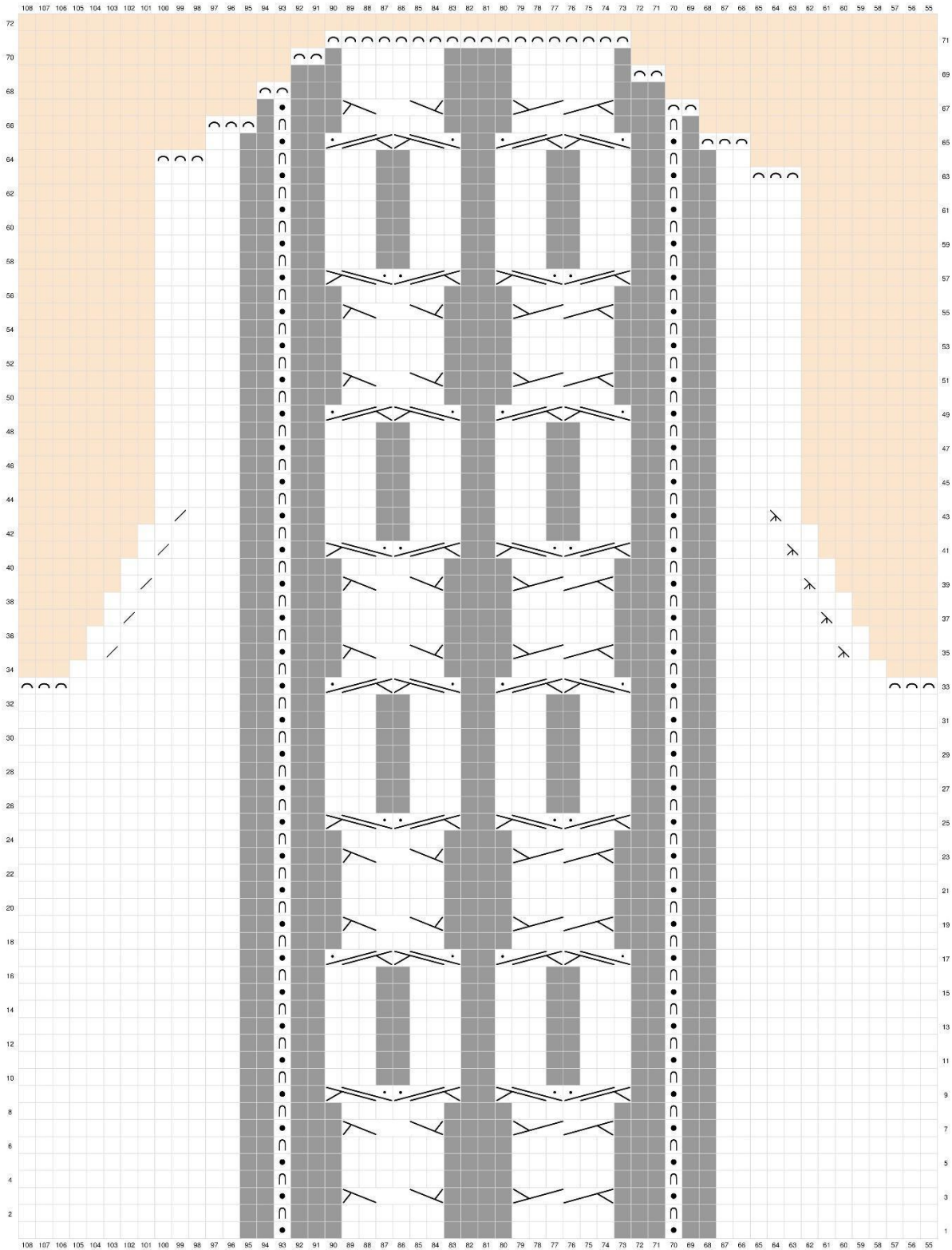
Weave in all loose ends. When you are finished knitting the vest, soak it in lukewarm water and gently press out the water. Stretch carefully into shape and leave to dry.

Enjoy!

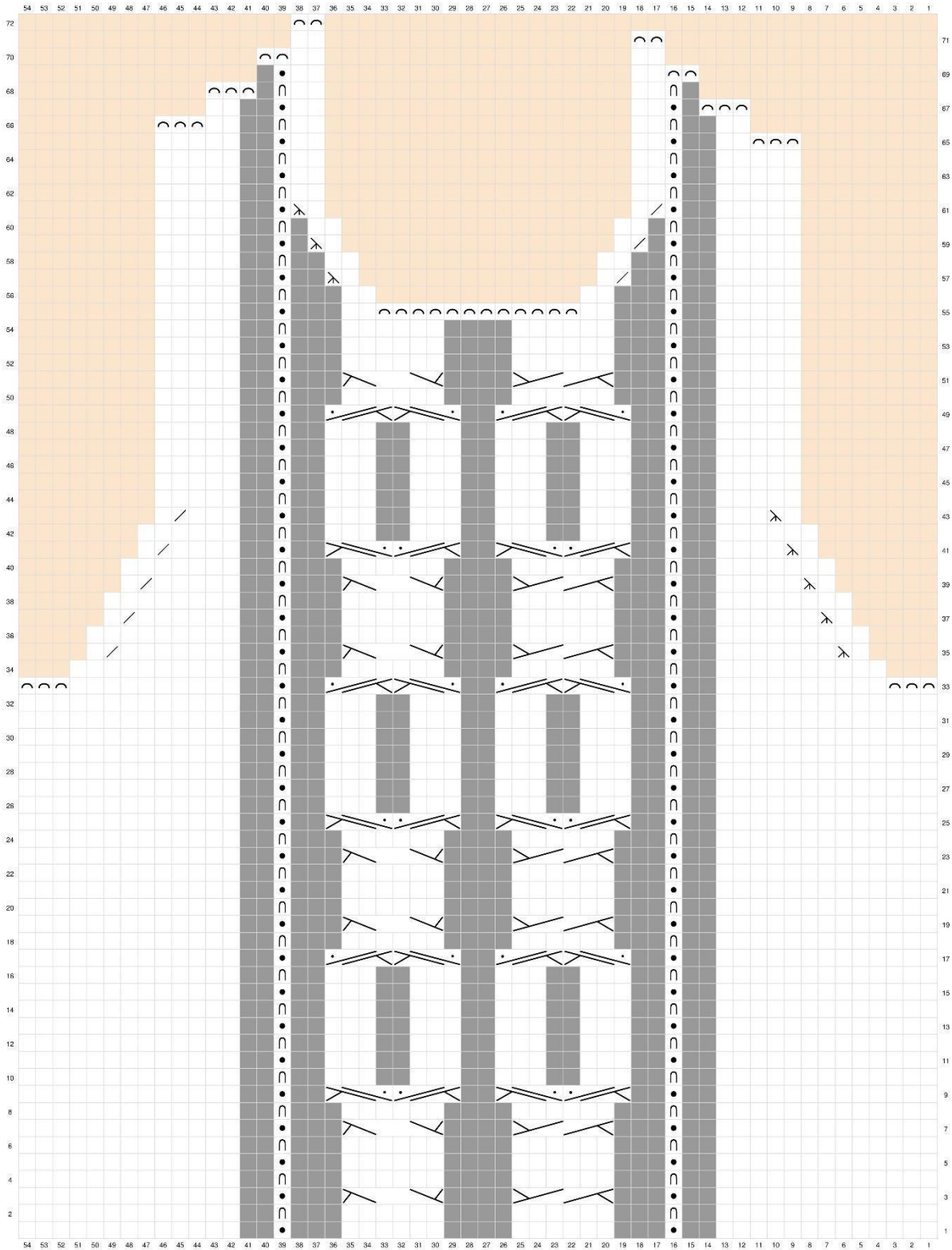
Erica Gabriella

ERICA GABRIELLA

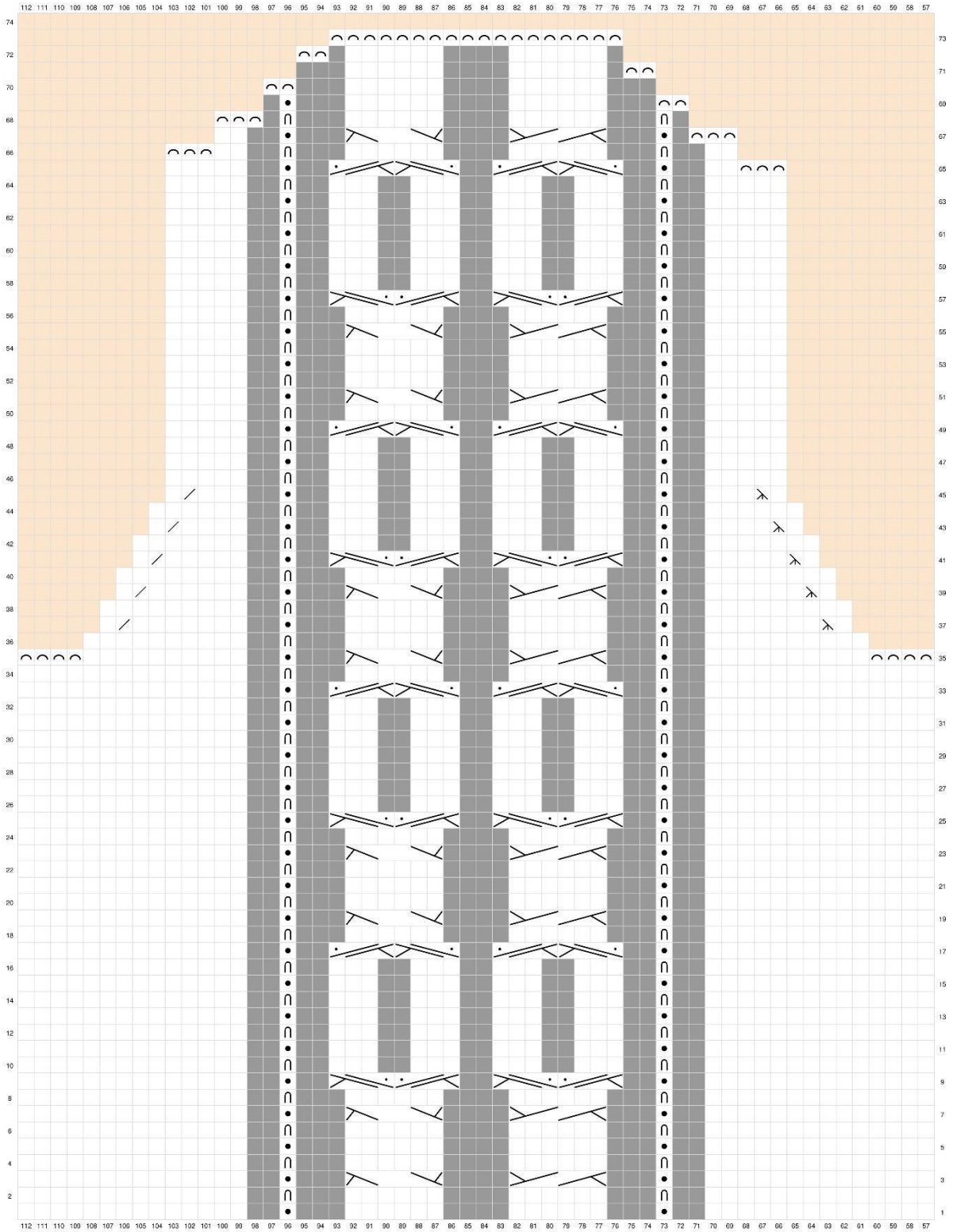
SIZE S - BACK PANEL



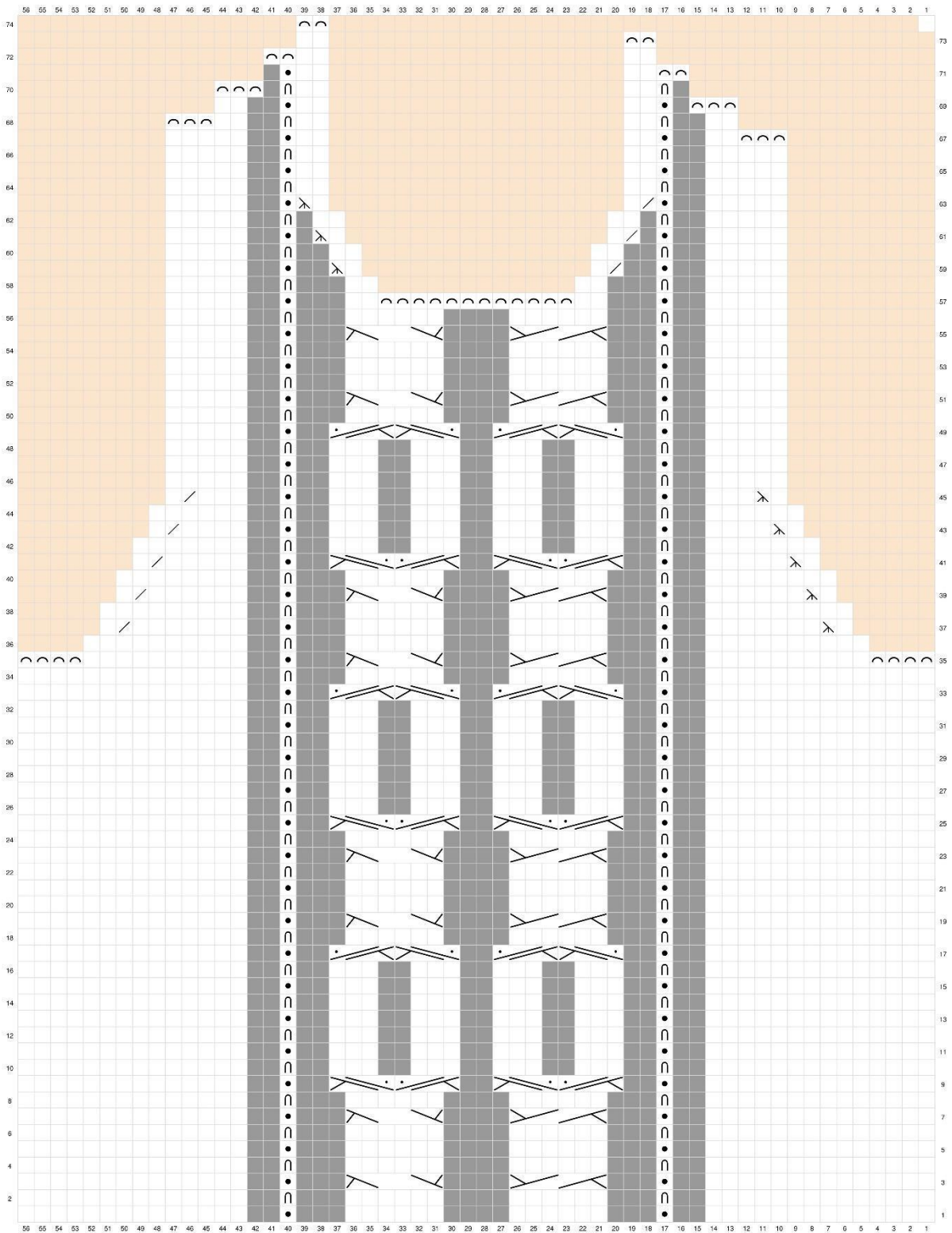
SIZE S - FRONT PANEL



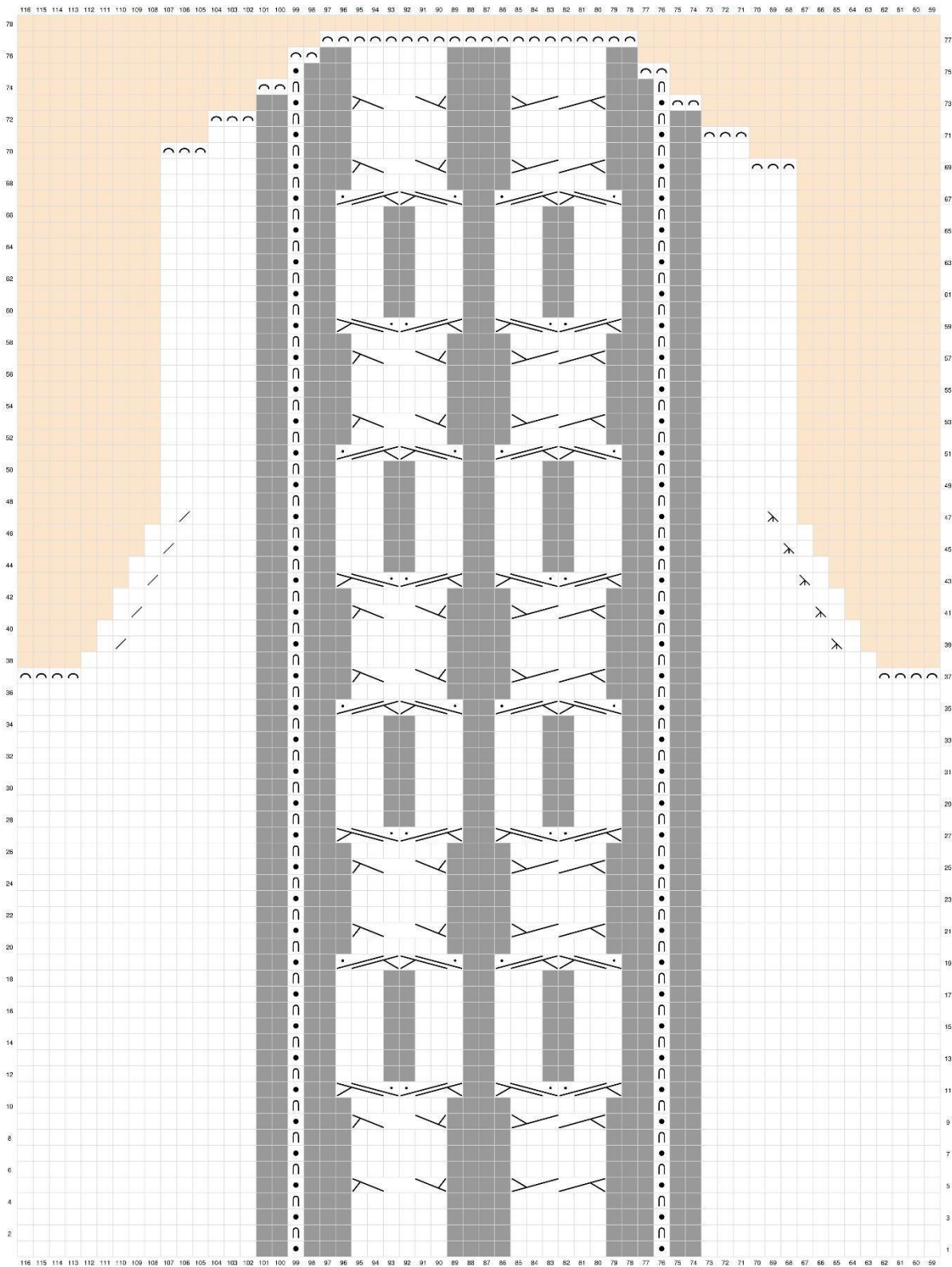
SIZE M - BACK PANEL



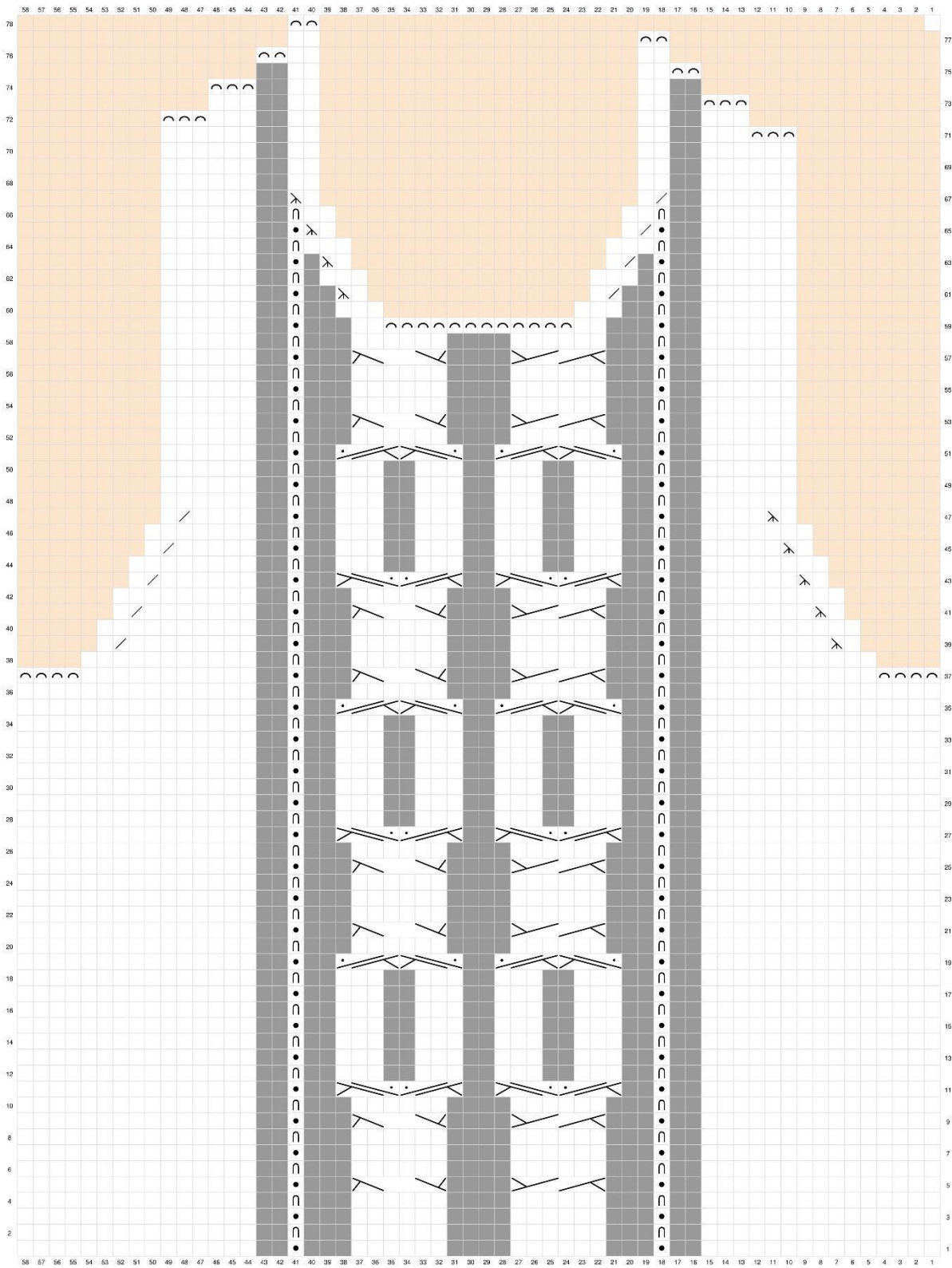
SIZE M – FRONT PANEL



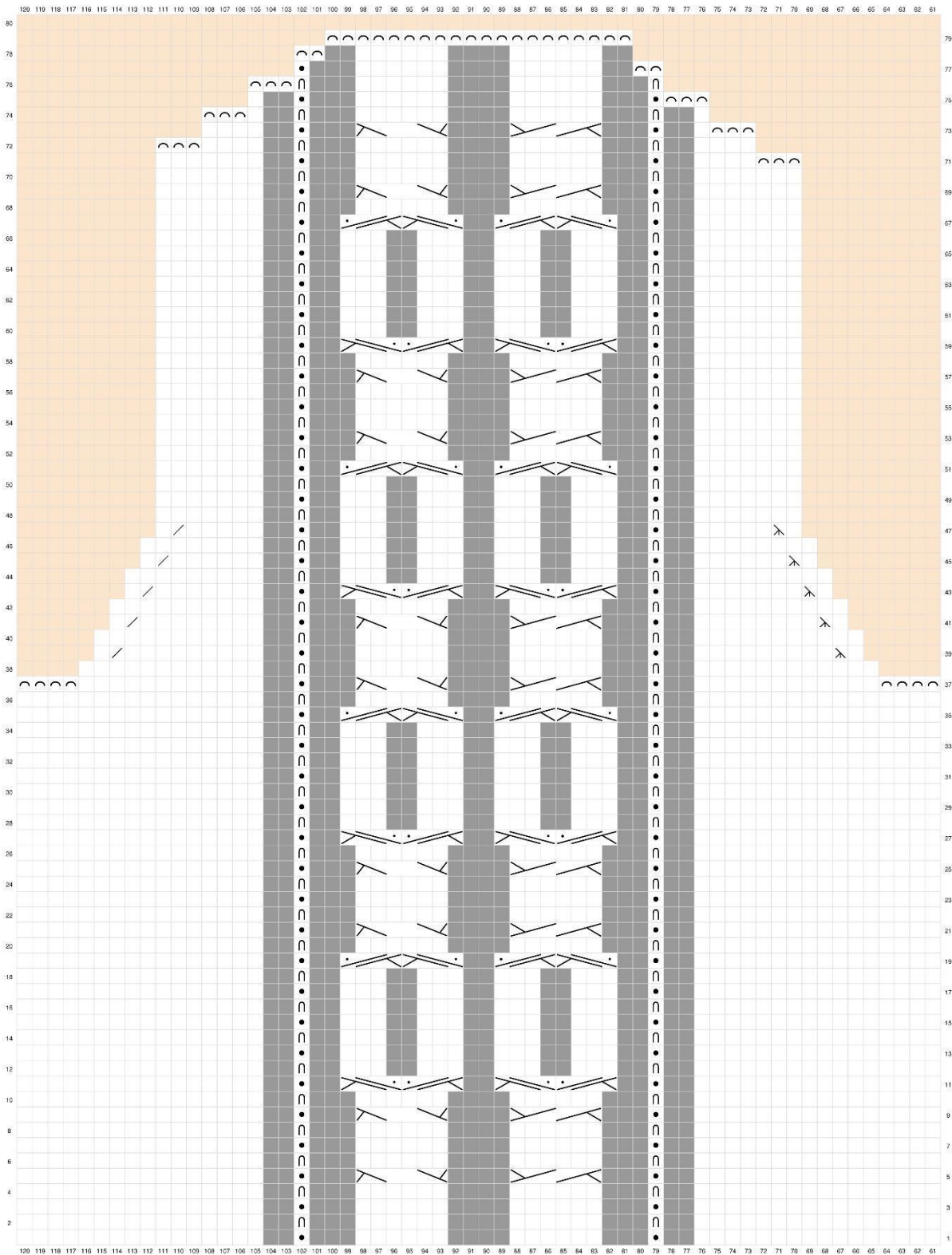
SIZE L - BACK PANEL



SIZE L - FRONT PANEL



SIZE XL – BACK PANEL



SIZE XL - FRONT PANEL

