



KNITTING PATTERN

Arctic Holly

Sweater

Design: Yuha Knitting | Hobbii Design



MATERIALS

Color A:

8 (8) 9 (10) 10 skeins of Friends Wool Color 75

Color B:

2 (2) 2 (2) 2 skein(s) of Friends Wool Color 17

Color C:

1 (2) 2 (2) 2 skein(s) of Friends Wool 81

Circular needles 3 mm, 40 cm (US 3 - 16")
or Double pointed needles

Circular needles 3 mm, 60-80cm (US 3 - 24-32")

Circular needles 4 mm, 40 cm (US 6 - 16")
or Double pointed needles

Circular needles 4 mm, 60-80cm (US 6 - 24-32")

Stitch markers

Tapestry needle

Waste yarn

YARN QUALITY

 **Friends Wool**, Hobbii

100 % Wool

50 g (0.1 oz) = 100 m (109 yds)

GAUGE

10 cm x 10 cm (4" x 4") = 18 sts x 24 rows

ABBREVIATIONS

K = knit

P = Purl

BOR – beginning of row

M1L – make 1 Left increase

M1R – make 1 Right increase

QUESTIONS

If you have any questions regarding this pattern, please feel free to email us at support@hobbii.com

Please make sure to include the pattern's name and number.

Happy Crafting!

SIZE

XS (S) M (L) XL

MEASUREMENTS

Width: 45 (46,5) 51 (53) 57,5

Length: 57 (58) 59 (61) 63

PATTERN INFORMATION

This beautiful sweater is worked in the round. The sleeves are worked separately, then all parts are joined together on the needle.

HASHTAGS FOR SOCIAL MEDIA

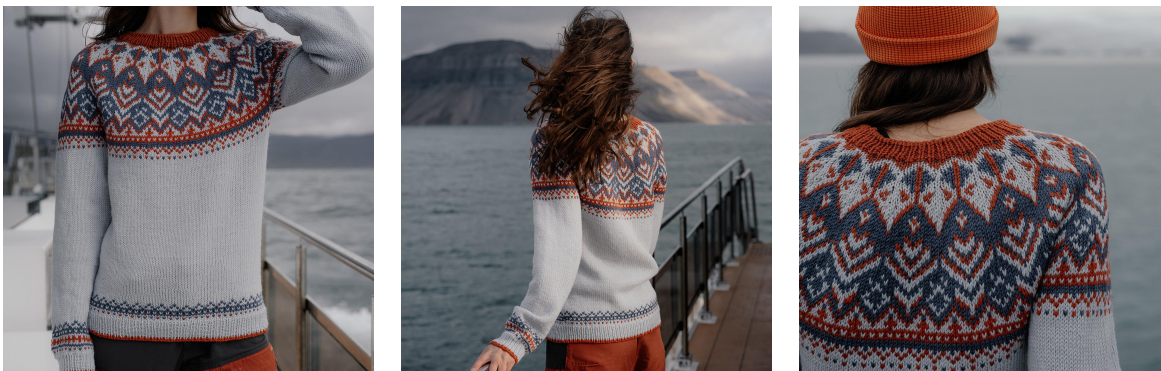
#hobbiiarcticholly

#hobbiiidesign

BUY THE YARN HERE

<https://shop.hobbii.com/arctic-holly-sweater>

Pattern



BODY

With Color B and needle 3 mm / US 3 cast on 160 (168) 184 (192) 208 sts. K 1 row, change to Color A. Work 5 (5) 5 (6) 6 cm in (k1, p1) rib.

Change to needle 4 mm / US 6 while working on the next round with Color A.
Work **CHART 1** (excluding rows 3-8).

When the pattern is complete, continue with Color A until the work measures: 38 (39) 40 (41) 42 cm

Work **CHART 2**.

When finished, place 8 sts after BOR on a stitch holder or waste, knit 72 (76) 84 (88) 96 sts, place 8 sts on a stitch holder or waste yarn, knit to end.

SLEEVES

With Color B and needle 3 mm / US 3 cast on 40 (42) 44 (46) 48 sts, place a BOR marker and join the work in the round.

After 1 k row, change to Color A. Work 5 (5) 5 (6) 6 cm in (k1, p1) rib.

Change to needle 4 mm / US 6, knit one round, increase 8 (6) 8 (10) 12 sts evenly spaced to reach 48 (48) 52 (56) 60 sts.

Work **CHART 1**.

Chart 1

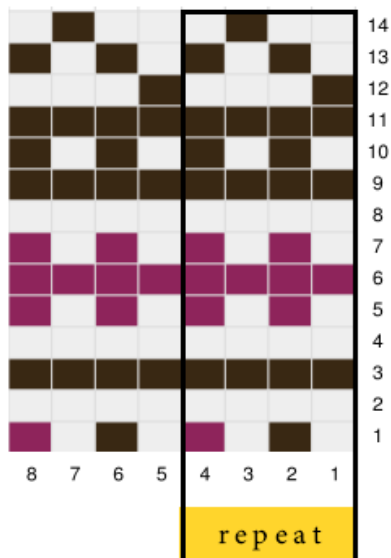
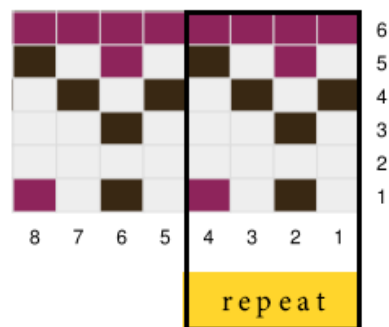


Chart 2



When the pattern is complete, continue with Color A. Work M1R and M1L increase round as follows:

k2, M1R, knit to the last 2 sts, M1L, k2.

Increase every 8th round for a total 8 (9) 8 (9) 9 times to get 64 (68) 68 (72) 80 sts.

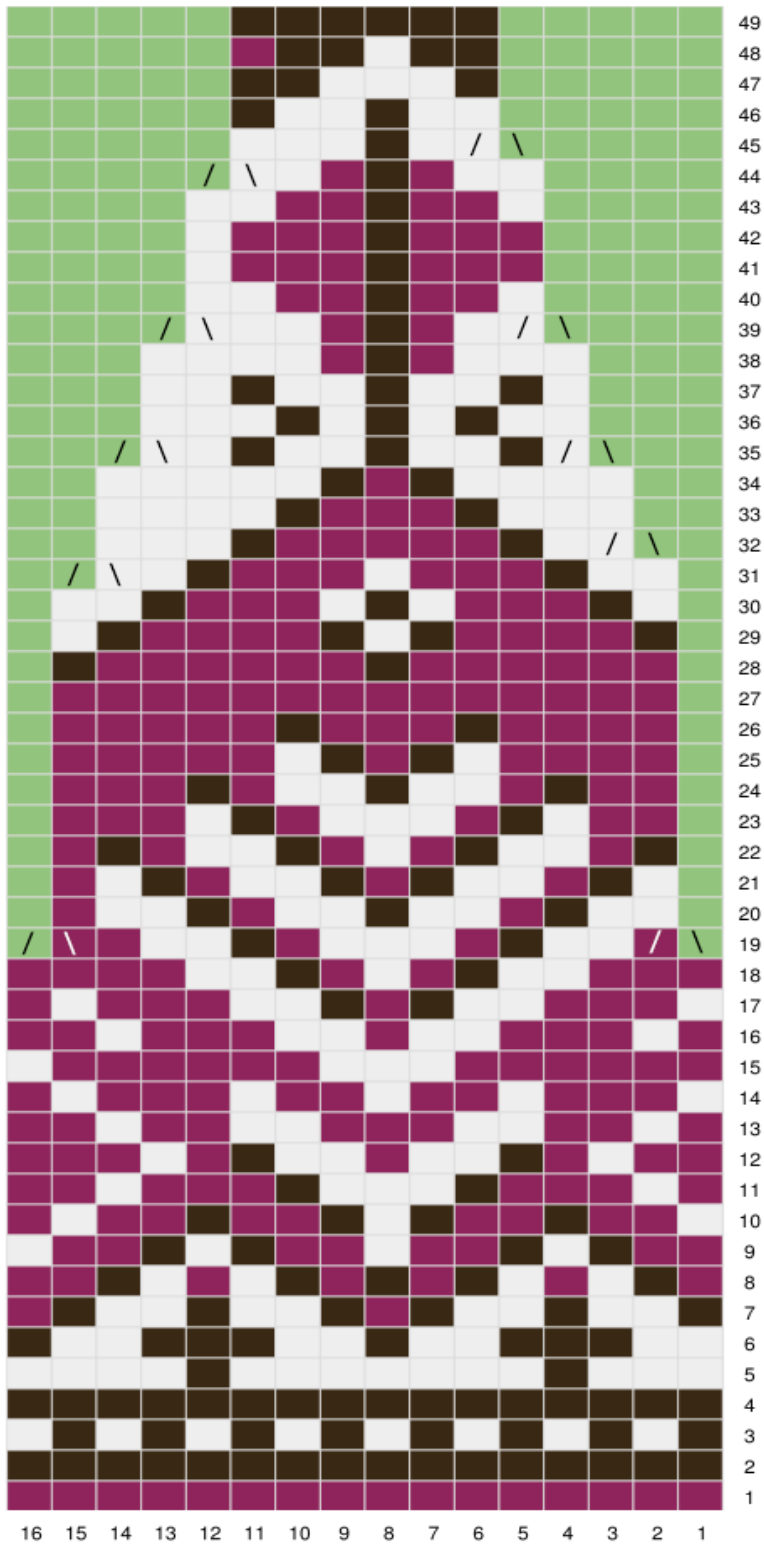
Keep working the sleeve until the sleeve measures: 43 (44) 45 (46) 47

Work **CHART 2**.

When finished, cut yarn, place 4sts before BOR and 4sts after BOR on a stitch holder or waste yarn. Put the remaining 56 (60) 60 (64) 72 on a spare needle or waste yarn.

Knit the second sleeve.

Chart 3




 Knit 2 sts together

YOKE

Join body and both sleeves: BOR marker at the same place. Place sts of one sleeve on the needle and knit onto the body needle, knit across sts of front, knit across the other sleeve, then knit across sts of the back = 256 (272) 288 (304) 336 sts on needles.

Work **CHART 3**

For sizes XS (S) skip rows 41, 49.

= 96 (102) 108 (114) 120 sts on needles.

Next round, decrease evenly 18 (22) 26 (28) 32 sts = 78 (80) 82 (86) 88 sts

NECK RIB

With Color B and needle 3 mm / US 3, work 3-4cm / 1-1.5 inches in rib (k1, p1). Bind off loosely in pattern.

ASSEMBLING

Graft underarm seams together using a tapestry needle, weave in all threads.

Rinse in lukewarm water and dry off on a flat surface.

Enjoy!

Yuha Knitting