



KNITTING PATTERN

Clara

Sweater


Design: Erica Gabriella Studio | Hobbii Design

MATERIALS

A: 12 (13) 14 (15) skeins of Snowstorm, col 21
B: 2 (2) 3 (4) skeins of Snowstorm, col 01

Circular needle 7 mm (US 10.75), 100 cm
Circular needle 7 mm (US 10.75), 40 cm
Circular needle 8 mm (US 11), 100 cm
Circular needle 8 mm (US 11), 40 cm
Stitch marker
Needle

YARN QUALITY

 **Snowstorm**, Hobbii
100% Wool
50 g (1.75 oz) = 50 m (54 yds)

GAUGE

10 cm x 10 cm (4" x 4") = 12 sts x 16 rows

ABBREVIATIONS

k = knit
p = purl
sts = Stitch(es)
cn = cable needle
Sl = slip stitch(es)
SM = Stitch marker

SIZE

S (M) L (XL)

MEASUREMENTS

Width: (66) 68 70 72 cm / (26") 26.7" 27.5" 28.34"
Length: (50) 52 54 56 cm / (19.7") 20.4" 21.2"
22.0"

PATTERN INFORMATION

An oversize cable sweater made with 100% wool knitted with a mix of cable stitches and embroidery. The sweater is made seamlessly with a circular needle and you will be introduced to chart reading. A basic knowledge of cable stitching, picking up stitches and chart reading is needed.

HASHTAGS FOR SOCIAL MEDIA

#hobbii clara
#hobbii design

BUY THE YARN HERE

<https://shop.hobbii.com/clara-sweater>



QUESTIONS

If you have any questions regarding this pattern, please feel free to email us at support@hobbii.com

Please make sure to include the pattern's name and number.

Happy Crafting!

Pattern



INFO AND TIPS

Before you knit this sweater, test your gauge.

With circular knitting, it is always useful that you mark your halfway point to indicate the side seams on 80 (82) 84 (86) stitches. Use a stitch marker to also mark your round - you can do every 10 rounds to keep count.

As you are switching between yarn colors, don't cut the yarn immediately to reduce the wastage and loose ends you have to weave in at the end. Simply twist in with the second color yarn as you change color.

Legend for back and front panel

 RS: Knit
WS: Purl

 RS: Purl
WS: Knit

 No sts


 Cast off


 Sl 1 st, k 1, pass slipped sts over


 Purl

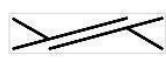
 Knit 2 sts together

 Sl 1 st

 RS: Cable 6 front: slip next 3 sts to cn and hold in front of work, k3, then k3 from cn
WS: p 6


 RS: Cable 6 back: Slip next 3 sts to cn and hold in back of work, k3, then k3 from cn
WS: p 6

 RS: Cable 4 front: slip next 2 sts to cn and hold in front of work, k2, then k2 from cn
WS: p 4

 RS: Cable 4 back: slip next 2 sts to cn and hold in back of work, k2, then k2 from cn
WS: p 4

 Slip 3 sts to cn and hold in front of work, p1, k3 from cn

 Slip 1 sts to cn and hold in back of work, k3, p1 from cn

 Slip 4 sts to cn and hold in front of work, k4, k4 from cn

 Slip 4 sts to cn and hold in back of work, k4, k4 from cn

BODY

Rib edge

Cast on 160 (164) 168 (172) sts on a 7 mm (US 10.75) circular needle and knit rib stitch (p1, k1)

Rows 1-2: color A

Rows 3-4: color B

Row 5: color A

Rows 6-7: color B

Rows 8-11: color A

BACK PIECE

Change to 8 mm (US 11) needles and continue following the chart with color A.

Work the chart matching your size.

When you reach row 37 (39) 39 (39) you will be shaping the armhole and dividing the piece into 2 panels (front and back).

You will be working on the back panel first and transfer the stitches of the front panel to another needle.

FRONT PIECE

Transfer your stitches to 8 mm (US 11) needles

Start knitting on the wrong side and follow the chart matching your size.

When shaping the neckline, you will be working on the right shoulder (when worn) first.

Left shoulder

Start knitting on the wrong side and continue with the chart.

Make sure the pattern on the front and back shoulder are aligned as you stitch them together with the stitching needle.



Turtleneck

Pick up a total of 50 (52) 54 (56) stitches around the neckline with circular needle 7 mm (US 10.75), 40 cm and knit rib stitch (p1, k1)

Rows 1-2 : color A

Rows 3-6 : color B

Rows 7-8 : color A

Rows 9-10 : color B

Rows 11-14 : color A

Cast off



SLEEVES

Worked top-down in the round.

Pick up 46 (48) 50 (52) stitches around the armhole with circular needle 8 mm (US 11), 40 cm

Left sleeve

Follow the chart.

Rib edge

7 mm (US 10.75) circular needle and knit rib stitch (p1, k1)

Rows 1-2: color A

Rows 3-4: color B

Row 5: color A

Rows 6-7: color B

Rows 8-11: color A

Cast off

Right sleeve

When making the right sleeve read the chart from left to right!

Notice that the symbol below now means:



RS: Cable 6 back: Slip next 3 sts to cn and hold in back of work, k3, then k3 from cn

WS: p 6

FINISHING

Slip in all the loose ends inside of the garment to finish it off.

EMBROIDERY

For embellishments you can embroider your sweater. Slip color B into your stitching needle and start embroidering. Feel free to be creative on how you would like to embroider this pattern.



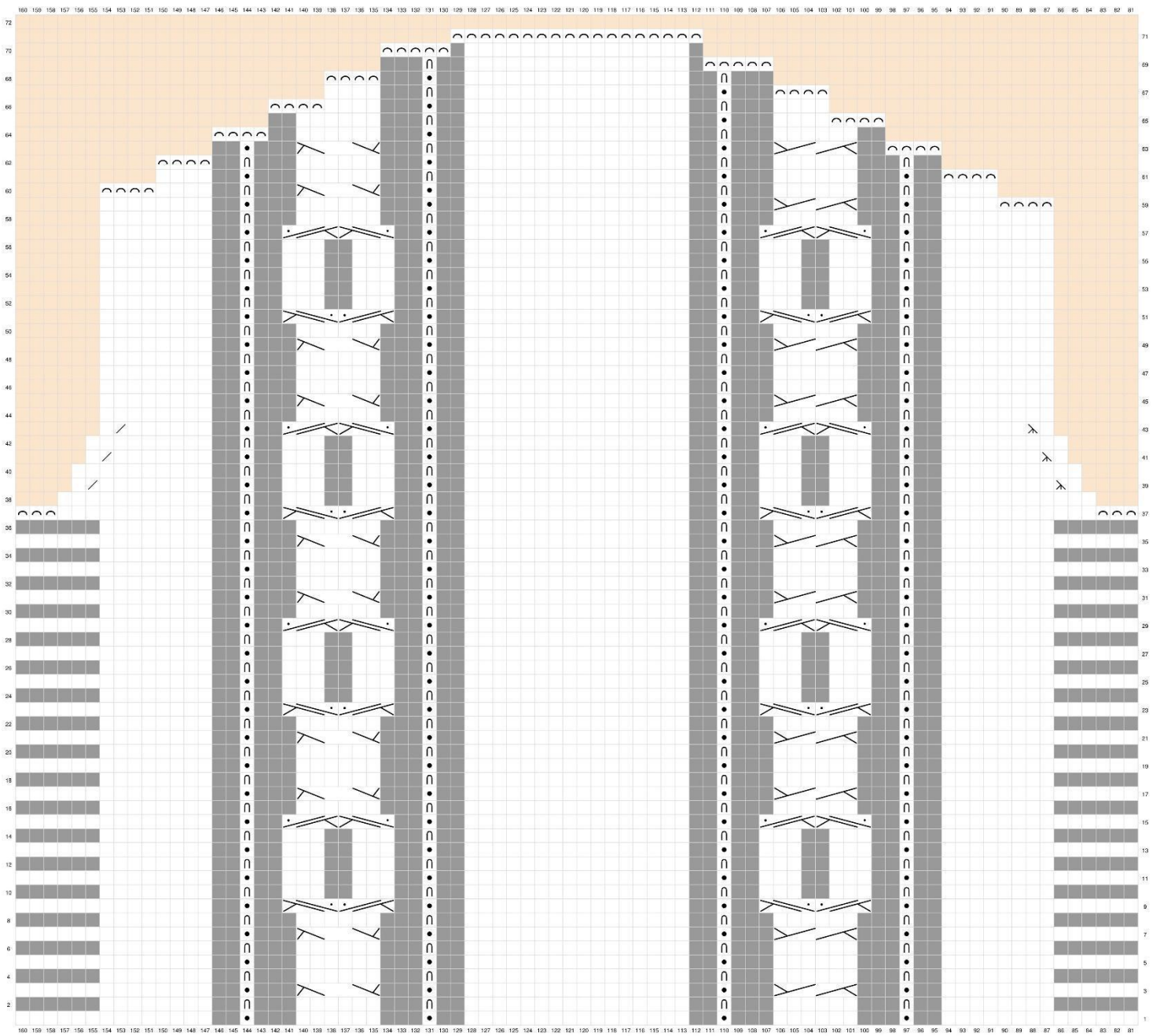
Finishing: Slip in the loose end to finish off the embroidery.

Enjoy!

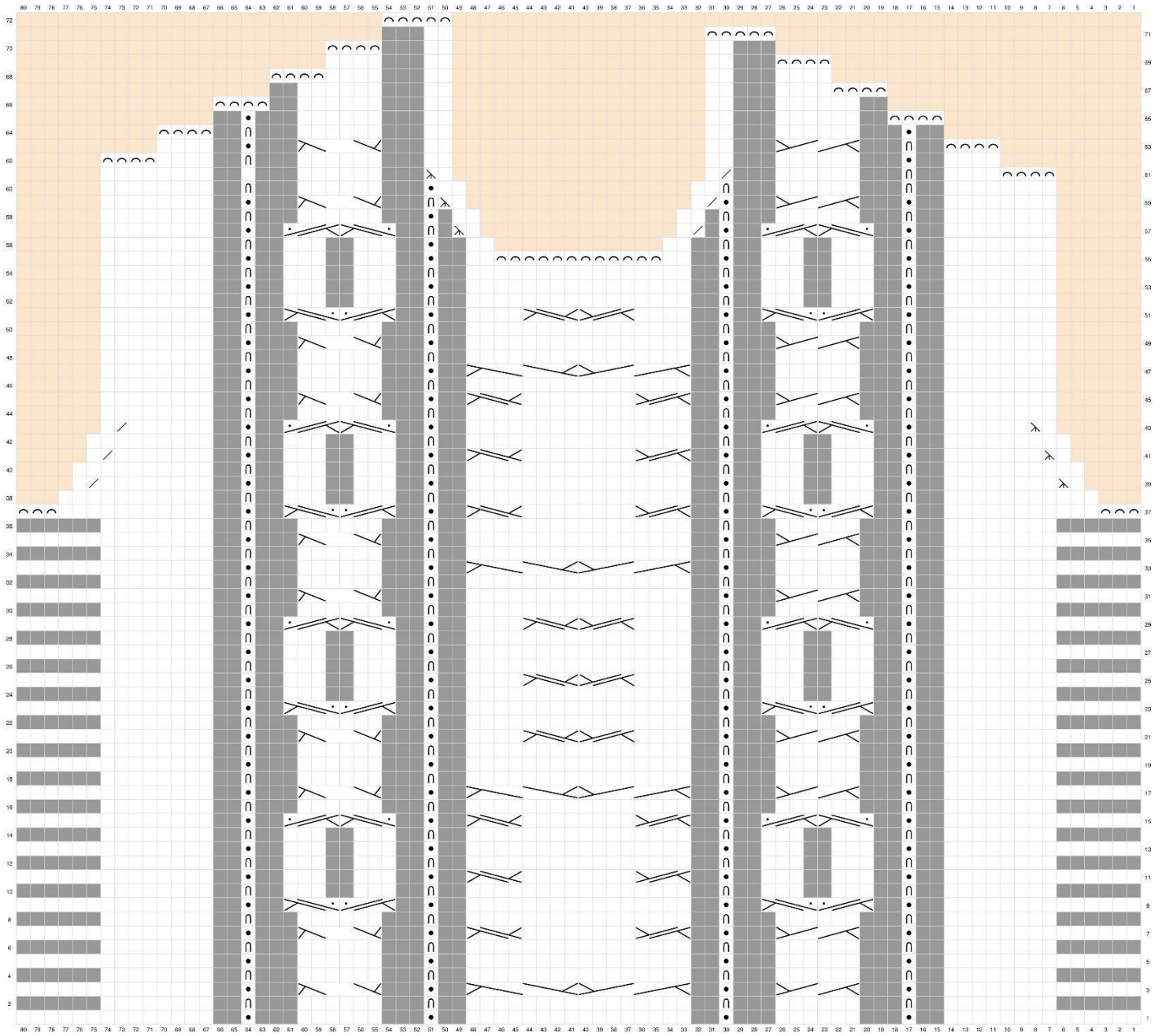
Erica Gabriella

ERICA GABRIELLA

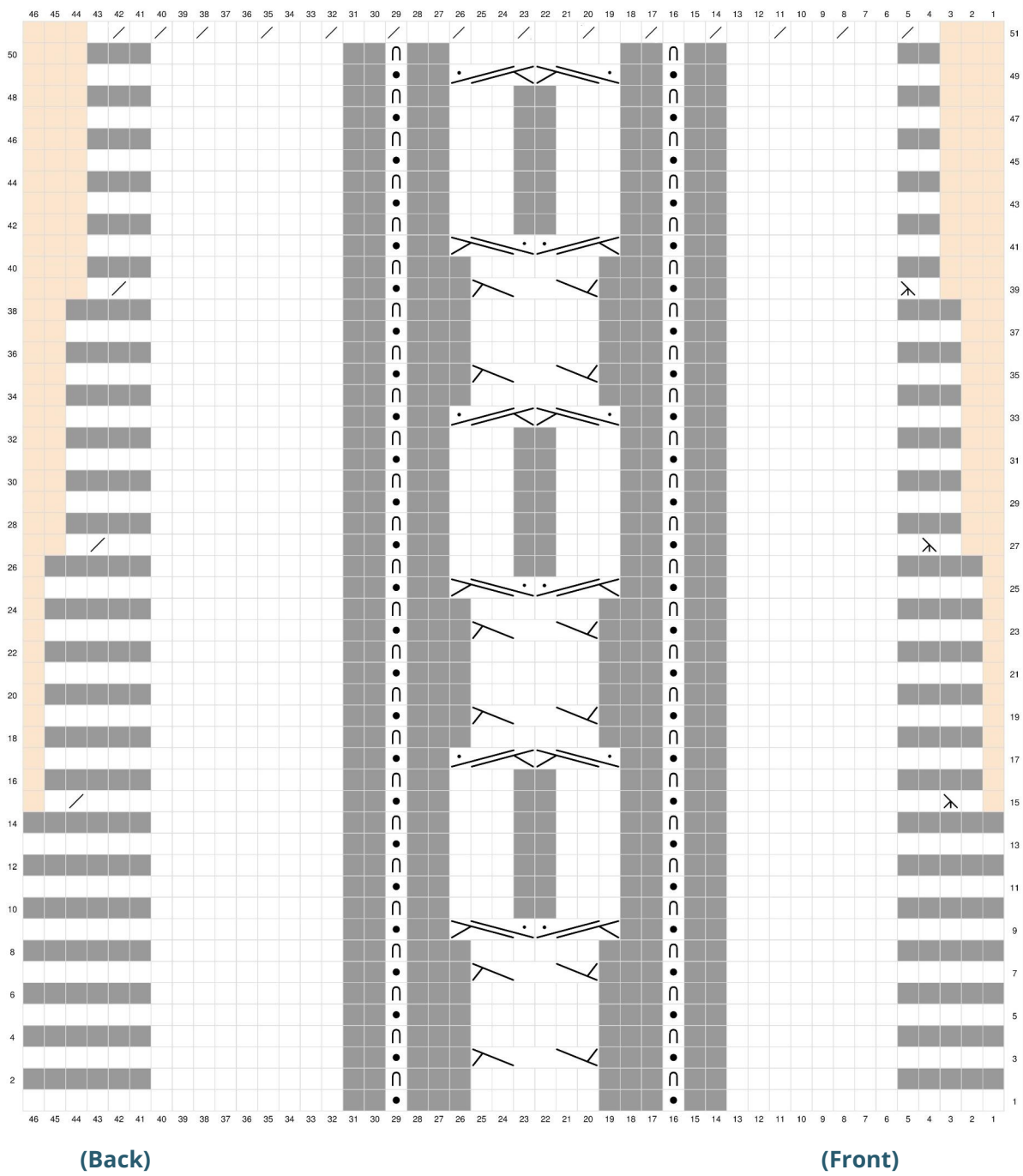
SIZE S: BACK PANEL



SIZE S: FRONT PANEL



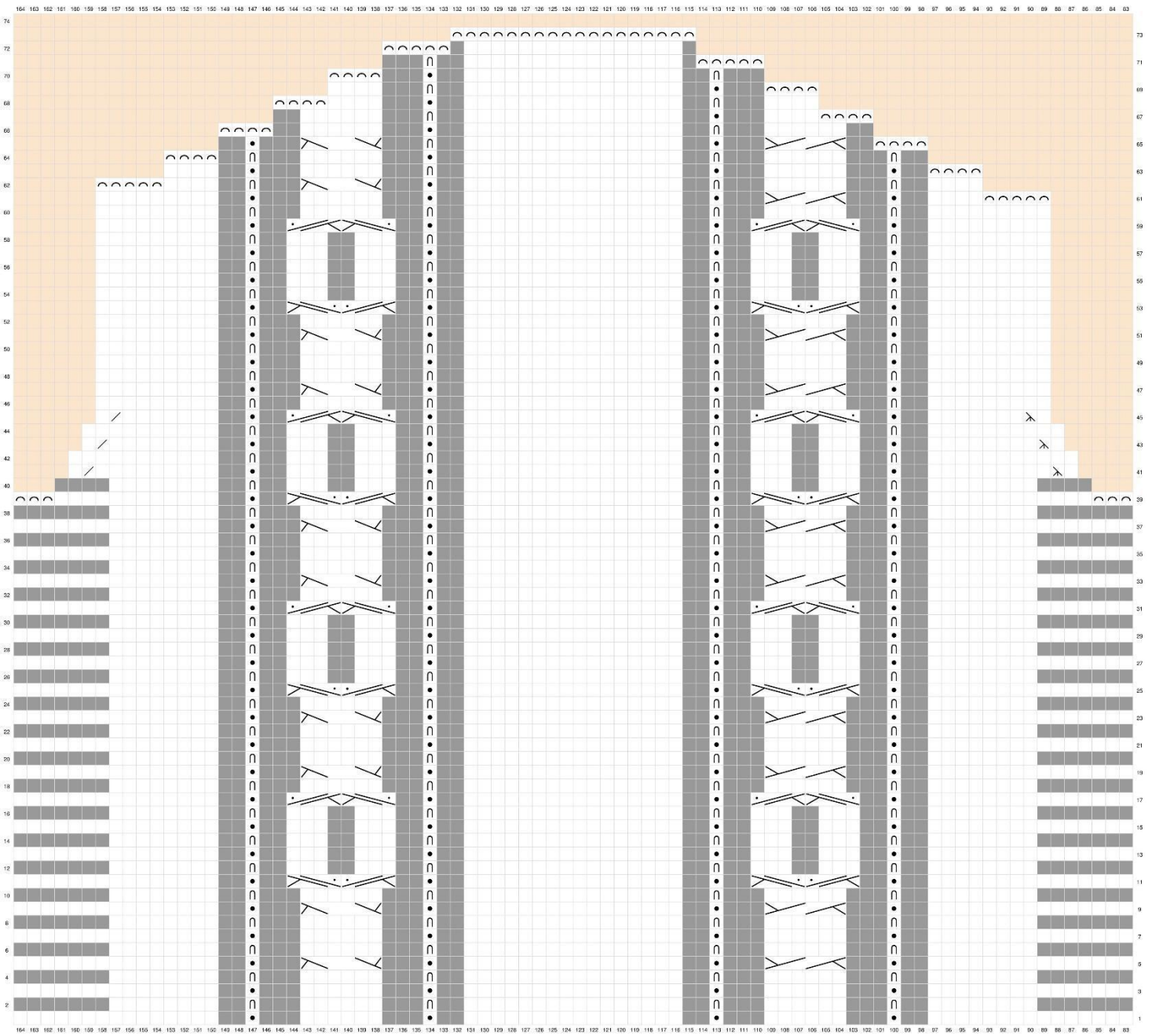
SIZE S : (left) SLEEVE PANEL



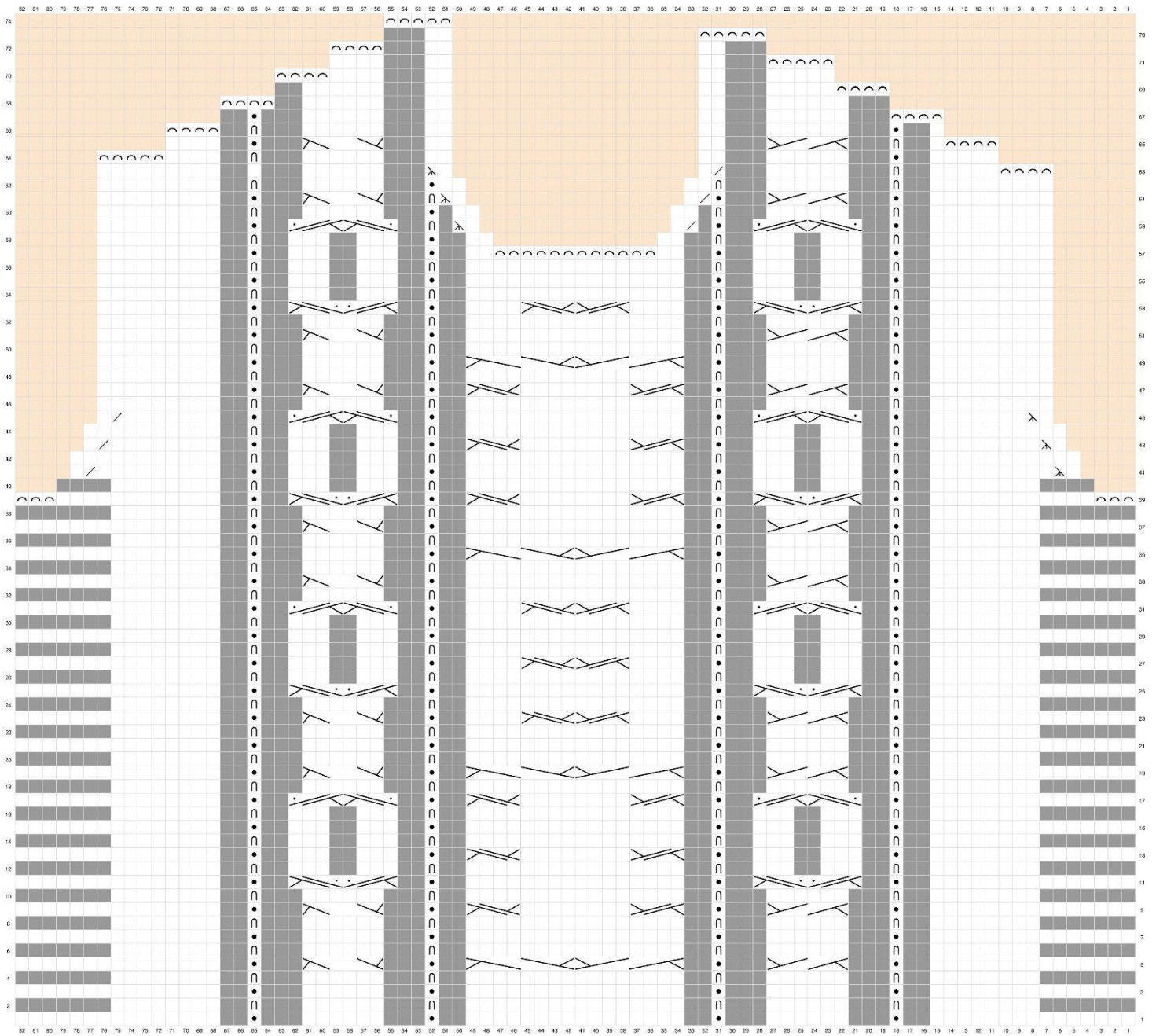
(Back)

(Front)

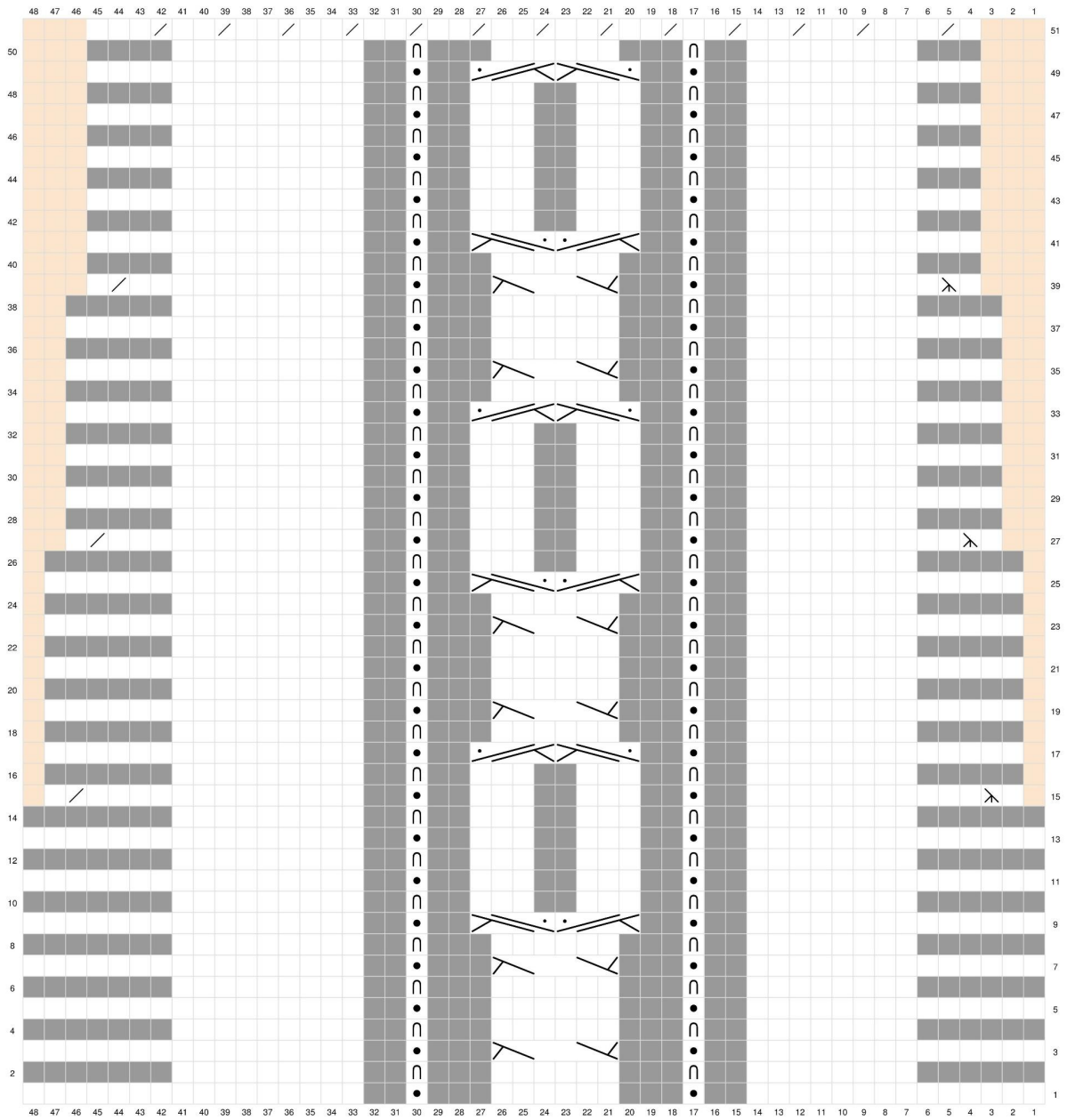
SIZE M: BACK PANEL



SIZE M: FRONT PANEL



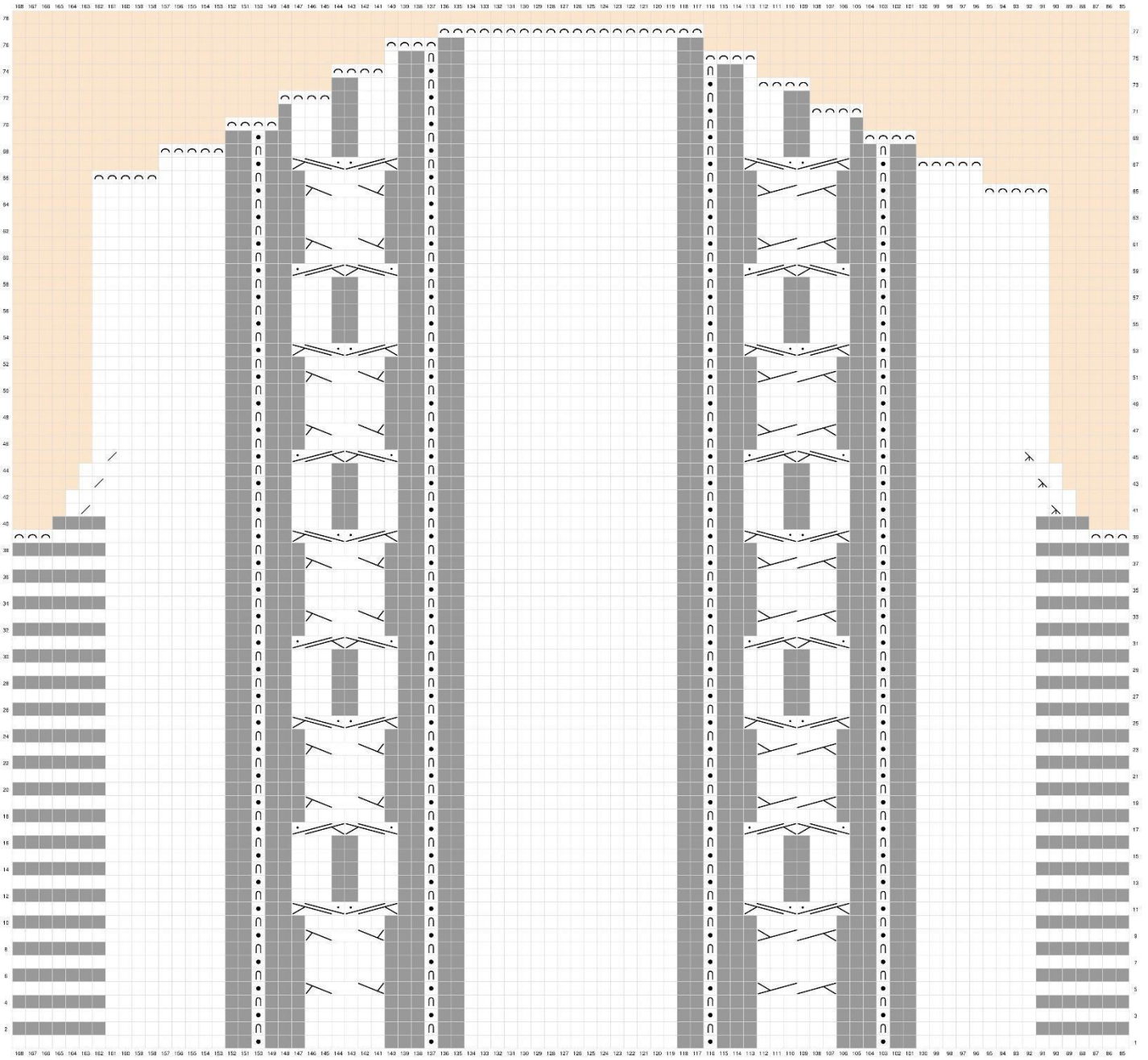
SIZE M: (eft) SLEEVE PANEL



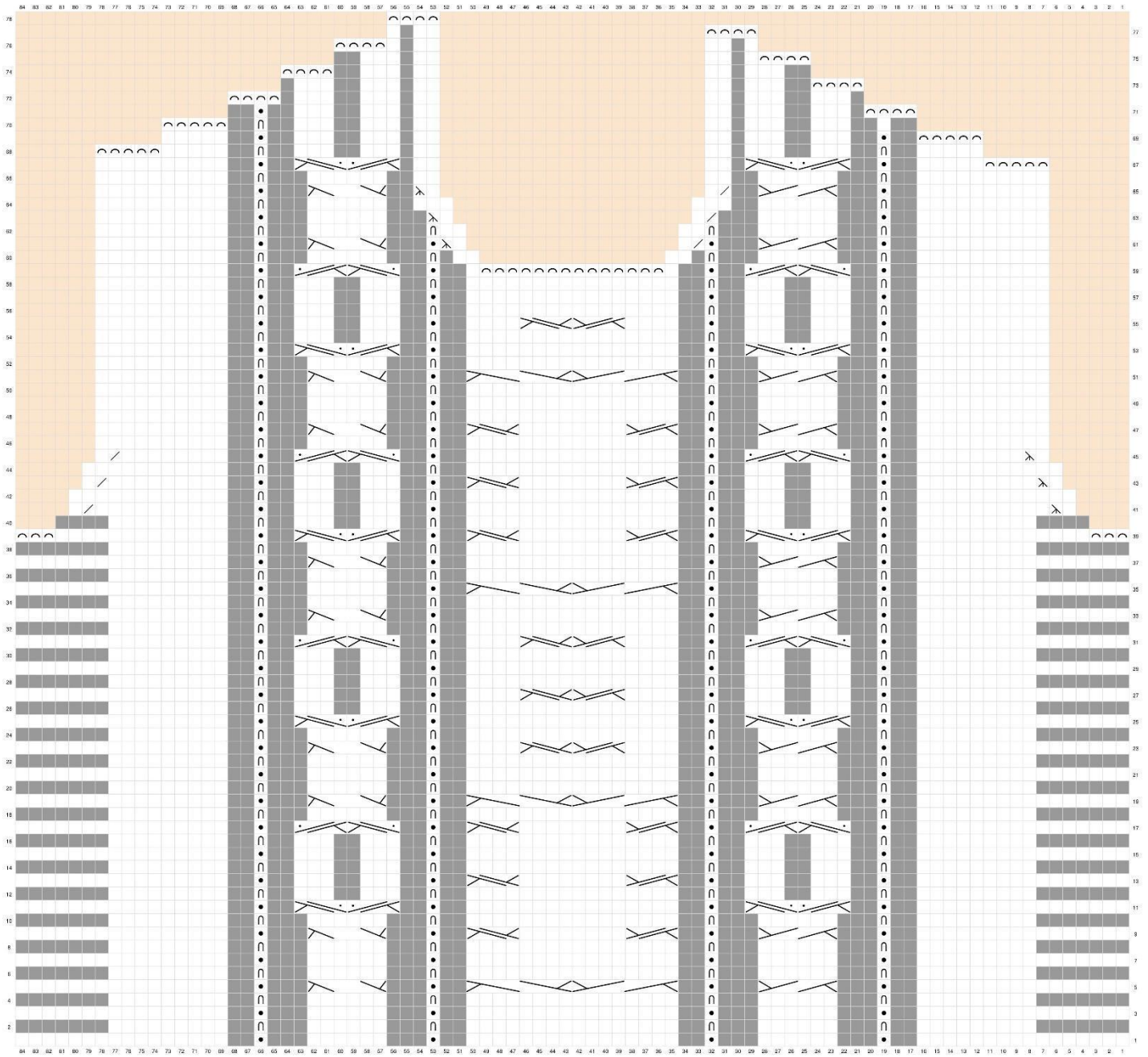
(Back)

(Front)

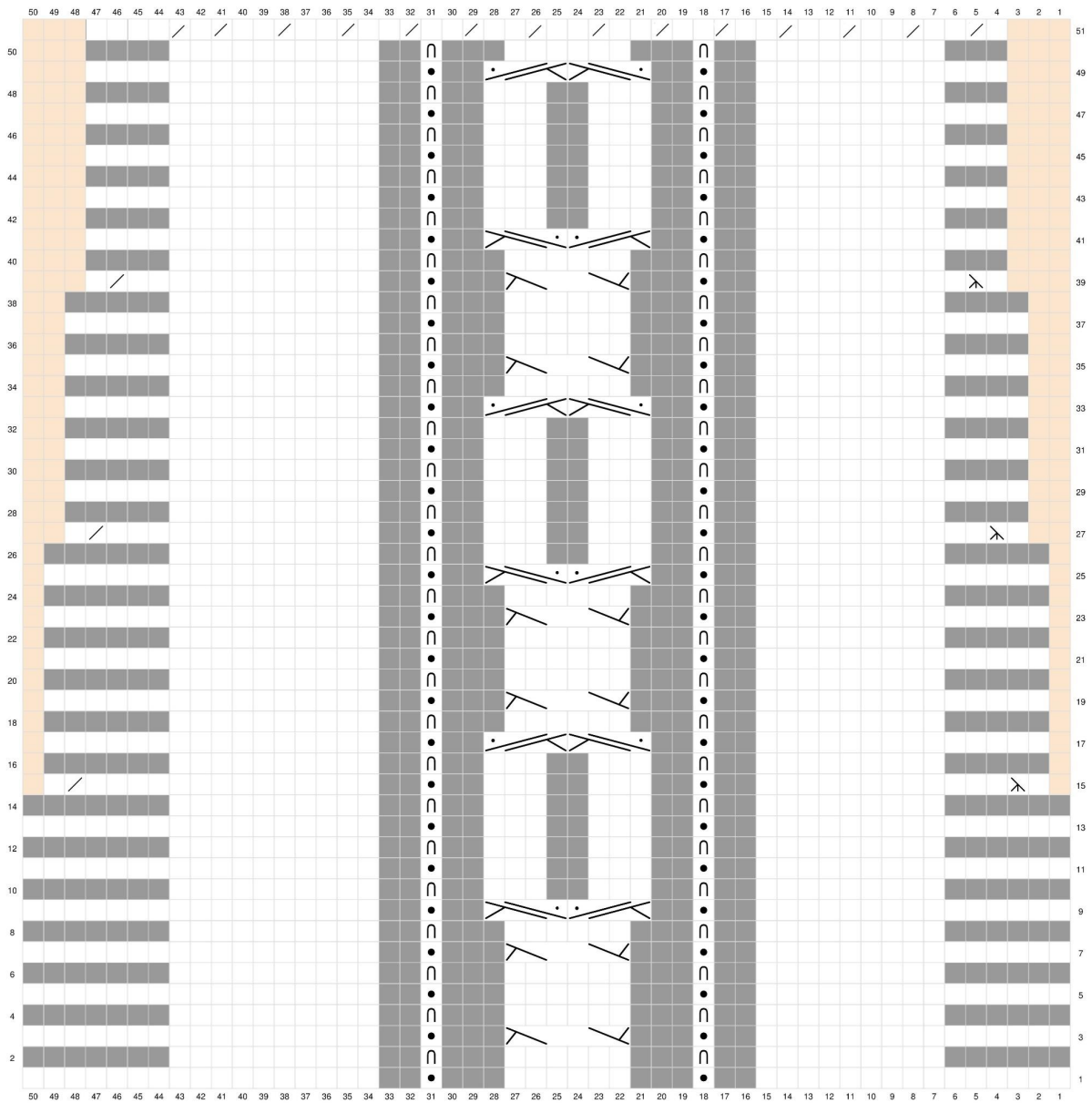
SIZE L: BACK PANEL



SIZE L: FRONT PANEL



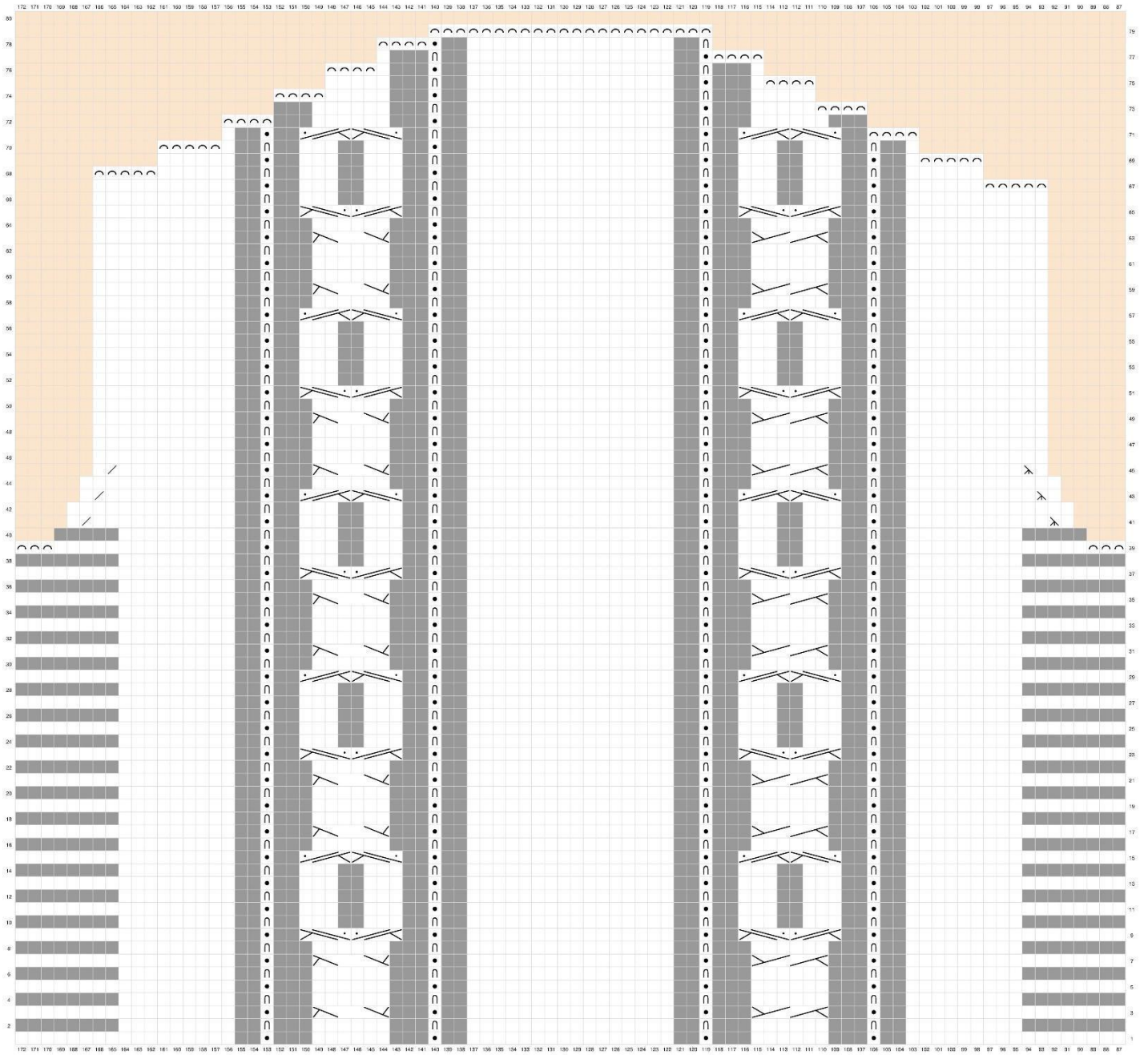
SIZE L: (left) SLEEVE PANEL



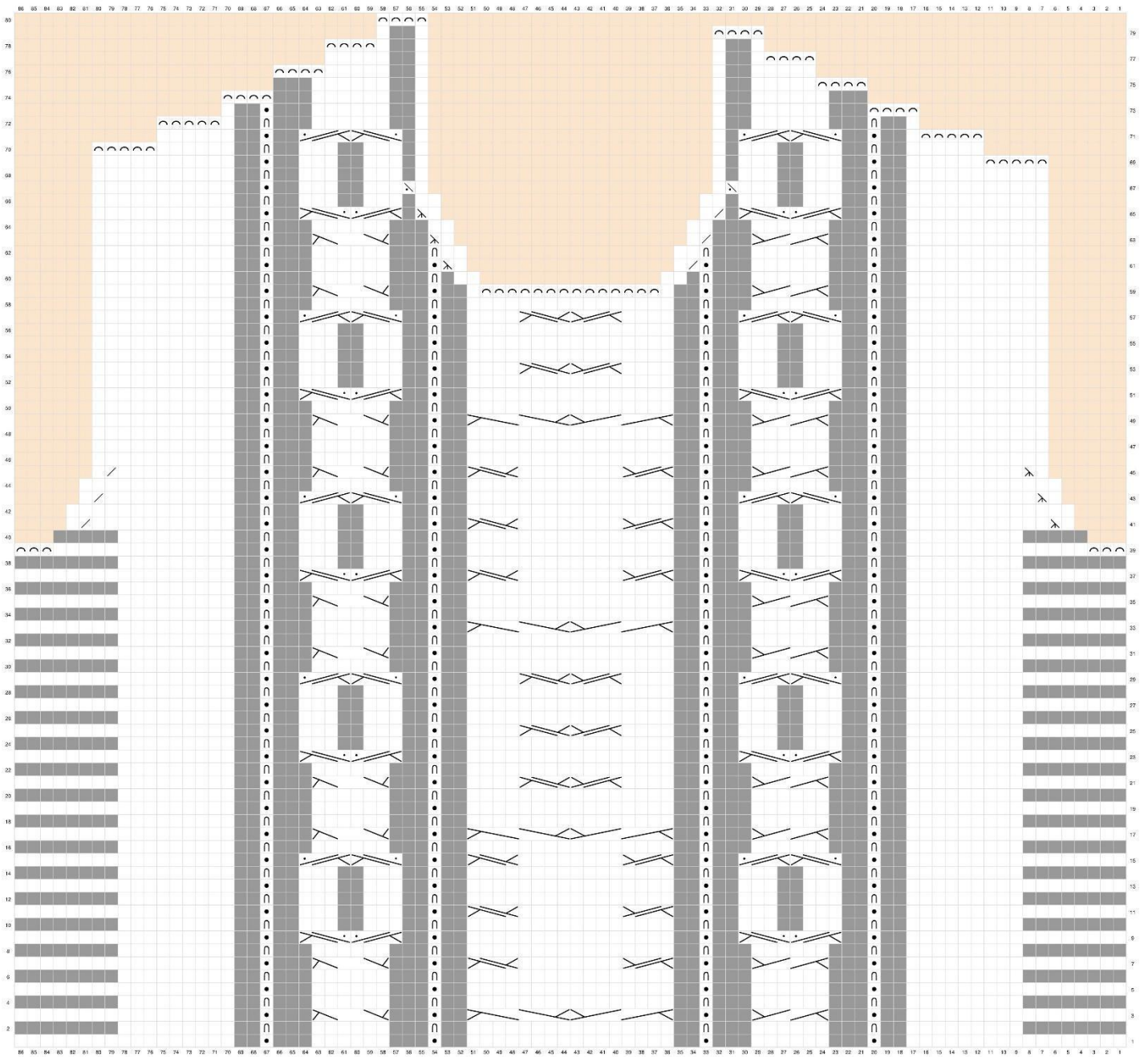
(Back)

(Front)

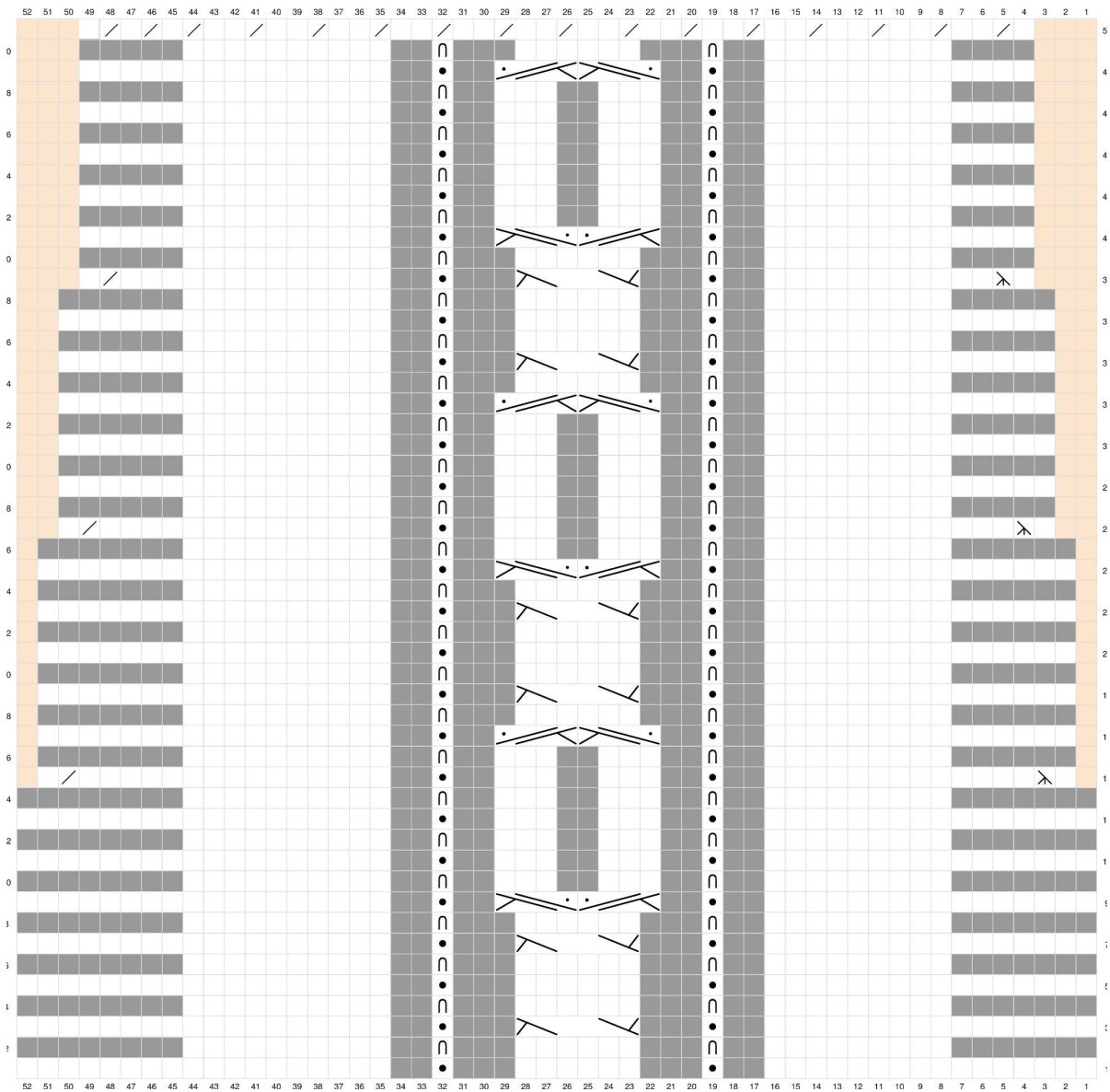
SIZE XL: BACK PANEL



SIZE XL: FRONT PANEL



SIZE XL: (left) SLEEVE PANEL



(Back)

(Front)