



KNITTING PATTERN

Emily

Vest

Design: Erica Gabriella Studio | Hobbii Design


MATERIALS


Color A: 6 (7) 8 (9) skeins of Tweed Delight,
White Marble (01)

Color B: 1 (1) 1 (1) skein of Woolpower,
Black (04)

Circular needle 7 mm, 80 cm (39.3")
Circular needle 7 mm, 40 cm (15.75")
Circular needle 8 mm (US 11), 80 cm (39.3").
Stitch marker
Stitching Needle
Cable needle

YARN QUALITY

 **Tweed Delight**, Hobbii
85 % Wool, 10% Acrylic, 5 % Viscose
50g (1.07 oz) = 100 m (109 yds)

 **Woolpower**, Hobbii
100 % Wool
100 g (3.52 oz) = 160 m (175 yds)

GAUGE

10 cm x 10 cm (4" x 4") = 11 sts x 15 rows
Work with 2 yarns together in stockinette

ABBREVIATIONS

k = knit
p = purl
sts = Stitch(es)
cn = cable needle
Sl = slip stitch(es)
SM = Stitch marker

SIZE

XS (S) M (L)

MEASUREMENTS

Width: 45 (47) 49 (51) cm / 17.7" (18.5") 19.3" (20.0")
Length: 50 (52) 54 (56) cm / 19.7" (20.4") 21.2" (22.0")

PATTERN INFORMATION

A simple crew neck vest for the cold months.
Designed with beautiful cables with textured
tweed yarn. This pattern is knitted both in the
round and back and forth on circular needles.
There is a chart for each size.

HASHTAGS FOR SOCIAL MEDIA

#hobbiiemily
#hobbiiemilydesign

BUY THE YARN HERE

<https://shop.hobbii.com/emily-vest>



QUESTIONS

If you have any questions regarding this pattern, please feel free to email us at
support@hobbii.com
Please make sure to include the pattern's name and number.

Happy Crafting!

Pattern



INFO AND TIPS

Mark your halfway point with a SM to indicate the side seams on 54 (56) 58 (60) stitches . Use the SM to also mark your rows to keep count. As you are switching between the colors, don't cut the yarn immediately to reduce the wastage and loose ends you have to weave in at the end. Use the chart matching your size and follow carefully.


Legend for back and front panel

 RS: Knit
WS: Purl

 RS: Purl
WS: Knit

 No sts


 Cast off


 Sl 1 sts, k 1, pass slipped sts over


 RS: Knit
WS: Purl

 Knit 2 sts together

 Sl 1 sts

 Cable 6 front: slip next 3 sts to cn and hold in front of work, k3, then k3 from cn

 Cable 6 back: Slip next 3 sts to cn and hold in back of work, k3, then k3 from cn

 Cable 4 front: slip next 2 sts to cn and hold in front of work, k2, then k2 from cn

 Cable 4 back: slip next 2 sts to cn and hold in back of work, k2, then k2 from cn

 Slip 3 sts to cn and hold in front of work, p1, k3 from cn

 Slip 1 st to cn and hold in back of work, k3, p1 from cn

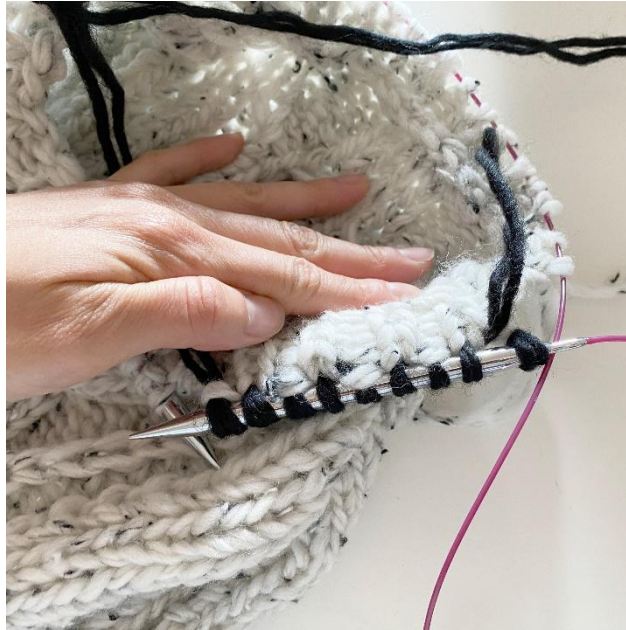
BODY

Rib edge

Work with two strands of yarn on 7 mm circular needles

Cast on 108 (112) 116 (120) stitches and knit rib stitch (p1, k1)

1. Row 1-4: color A (do not cut the yarn, twist it as you change to the next color)
2. Row 5-6 : color B (cut the yarn as you switch back to color A)
3. Row 7-10 : color A



Back

Switch to 8mm circular needles.

Knit according to chart.

At row 33 (35) 37 (39) divide the front and back body. Let the stitches for the front piece rest, and continue knitting the back piece following the chart, back and forth on the needles.

FRONT PIECE

Put your stitches back on the 8mm circular needles.

Knit according to chart.

Shoulders

Sew the shoulders together. Make sure to line them so that the pattern matches.



Neck

With two strands of yarn on 7mm, 40 cm (15.75") circular needles

Pick up 52 (54) 56 (58) stitches around the neckline and knit rib stitch (p1, k1) as follows:

Round 1- 2 (with color A): *p1, k1*

Round 3 (with color B): *p1, k1*

Round 4 (with color A): *p1, k1*

Round 5 (with color A): *p1, k1*

Cast off loosely or with an elastic cast off



Armholes

With two strands of yarn on 7 mm, 40 cm (15.75") circular needles

Pick up 56 (58) 60 (62) stitches around the armhole and knit rib stitch (p1, k1) as follows:

Round 1- 2 (with color A): *p1, k1*

Round 3 (with color B): *p1, k1*

Round 4 (with color A): *p1, k1*

Round 5 (with color A): *p1, k1*

Cast off

Repeat for the second armhole.

Finishing touches

Weave in all loose ends.

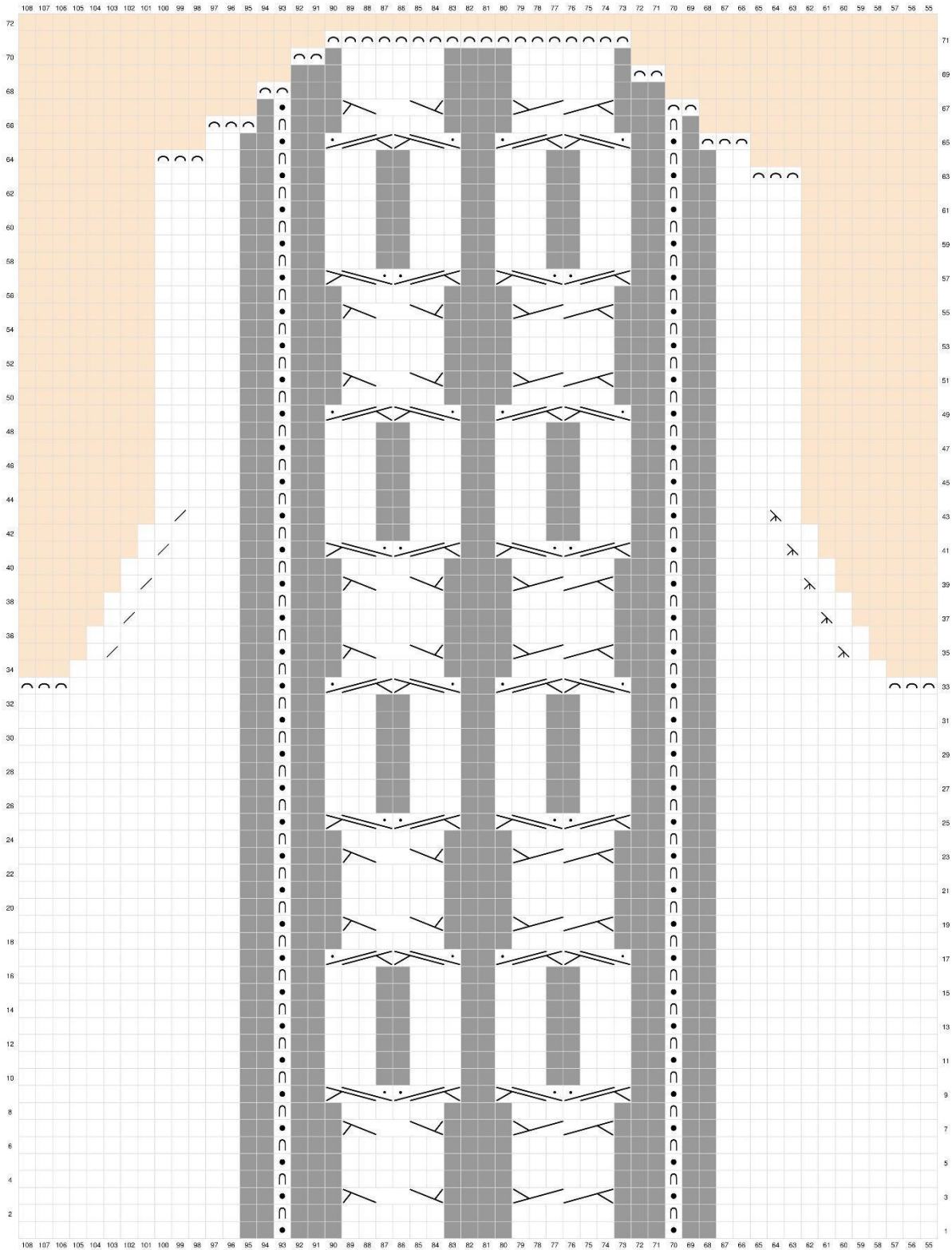
Soak in lukewarm water and gently press out the water. Stretch carefully into shape and leave to dry.

Enjoy!

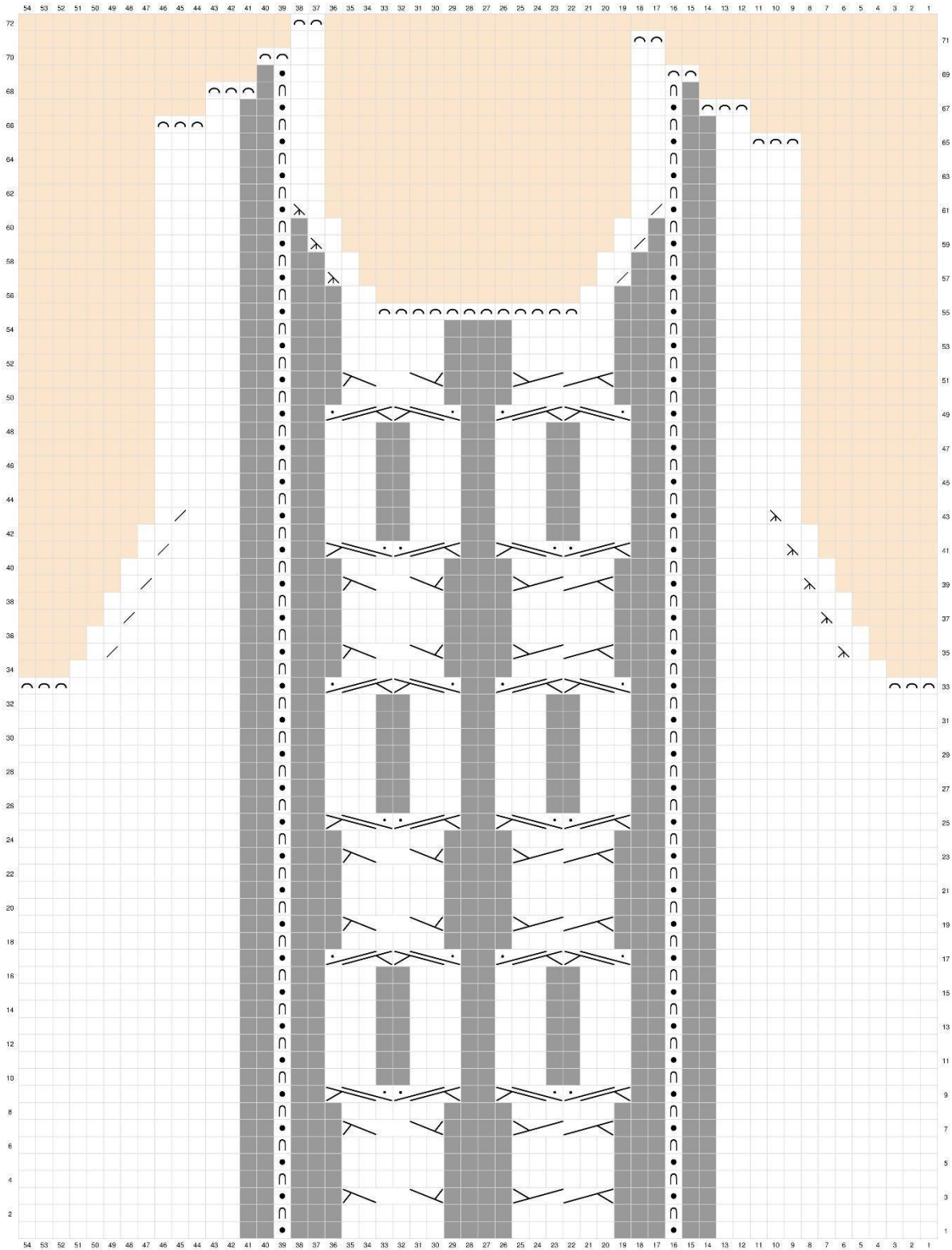
Erica Gabriella

ERICA GABRIELLA

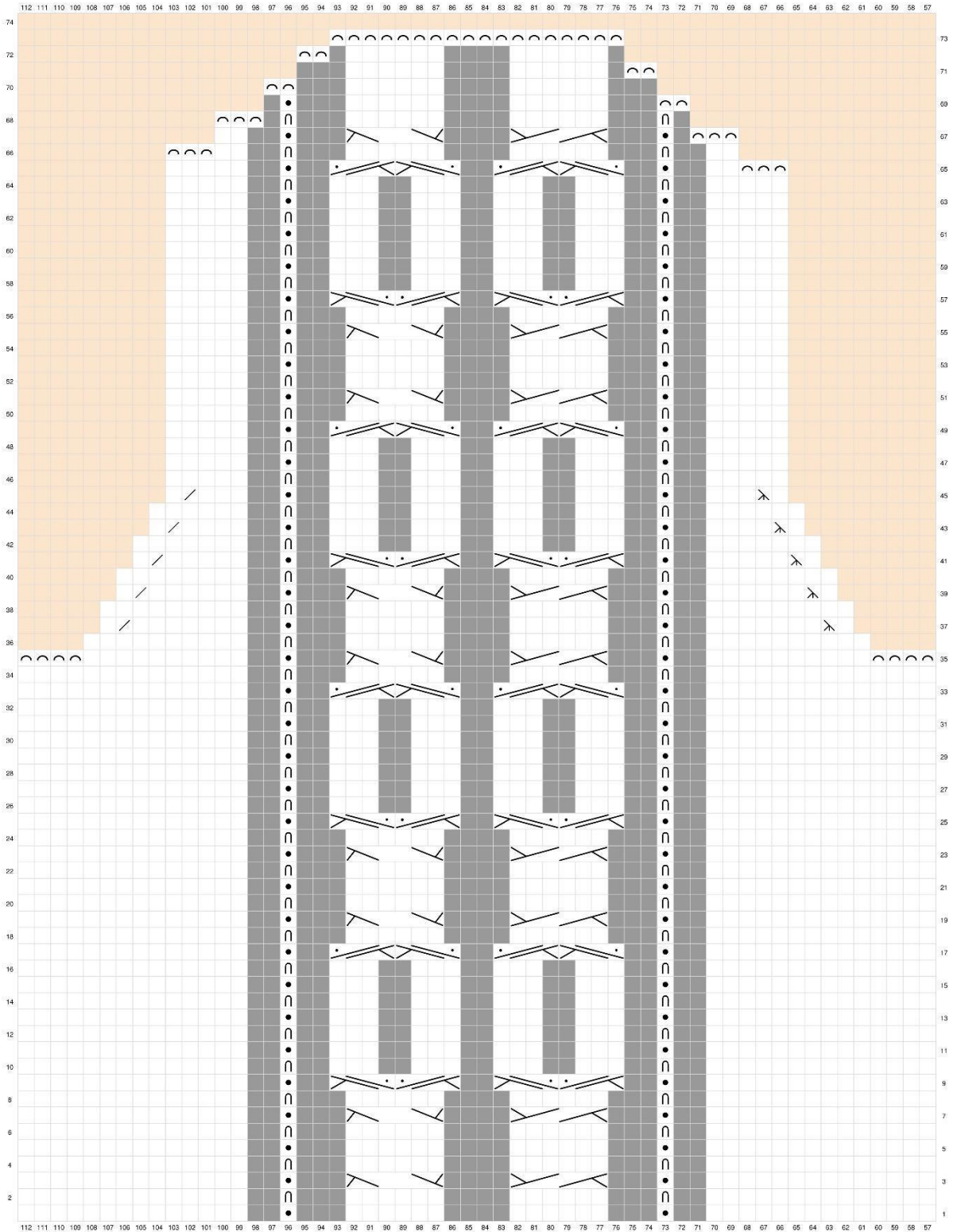
SIZE XS - BACK PANEL



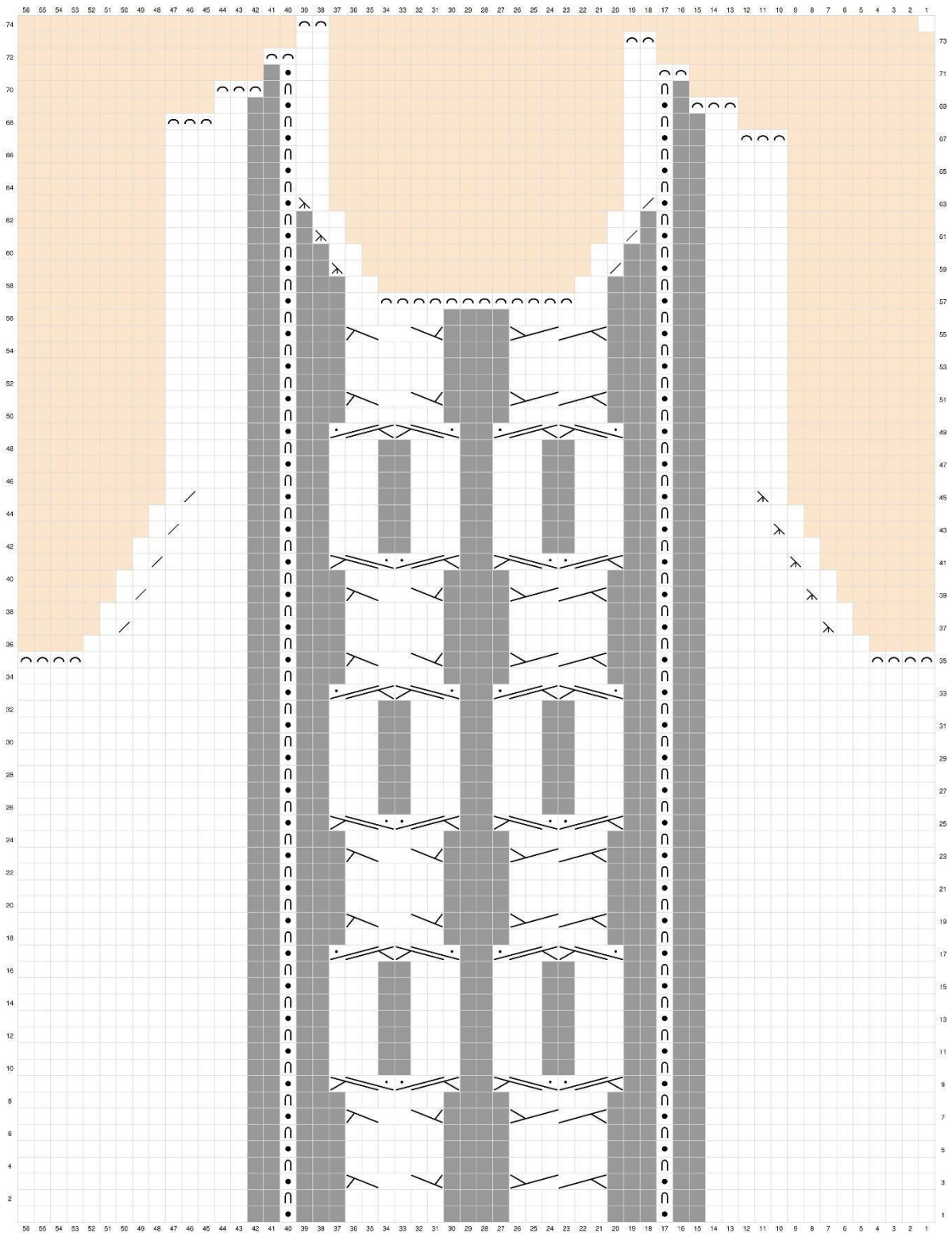
SIZE XS - FRONT PANEL



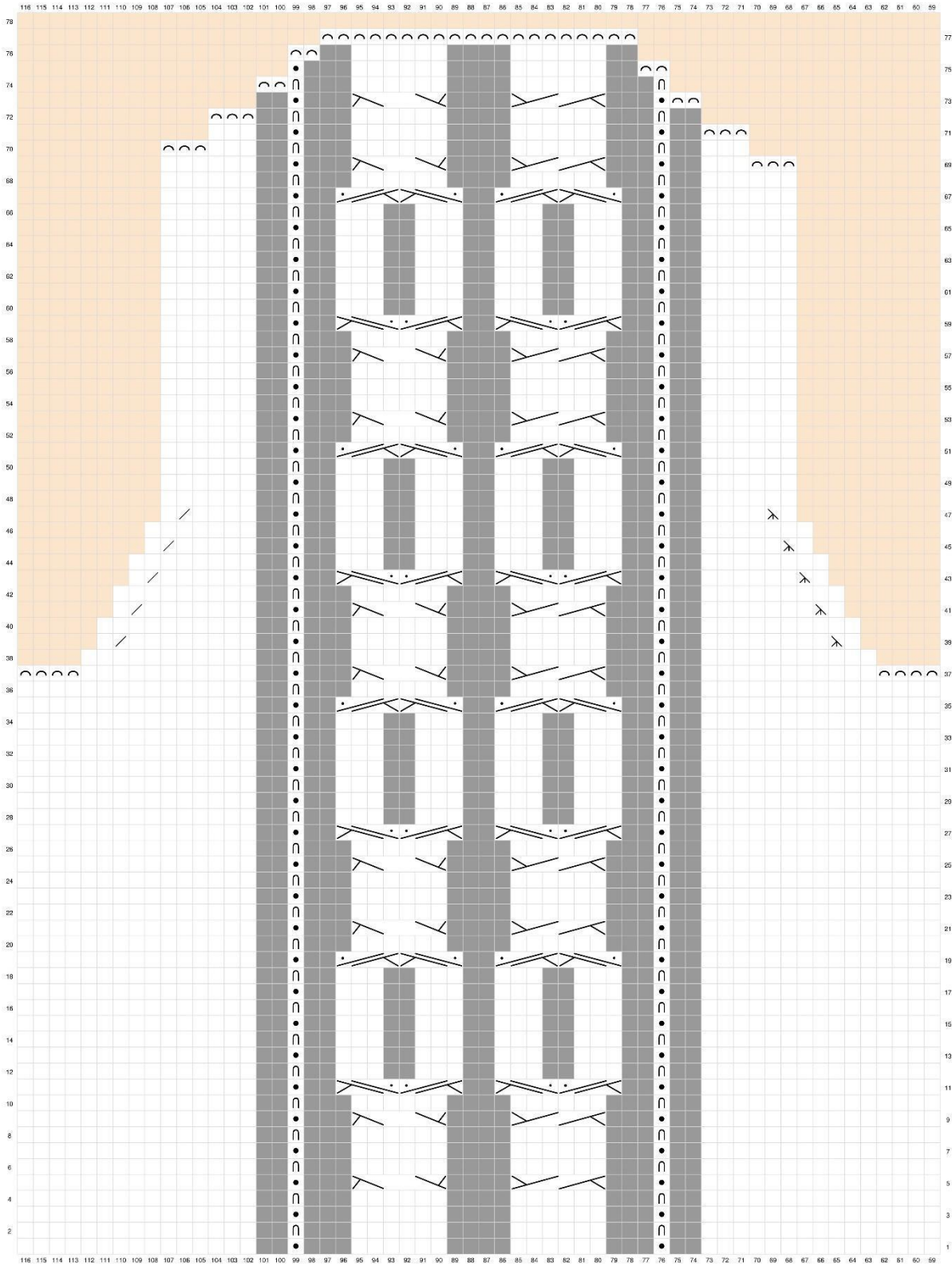
SIZE S - BACK PANEL



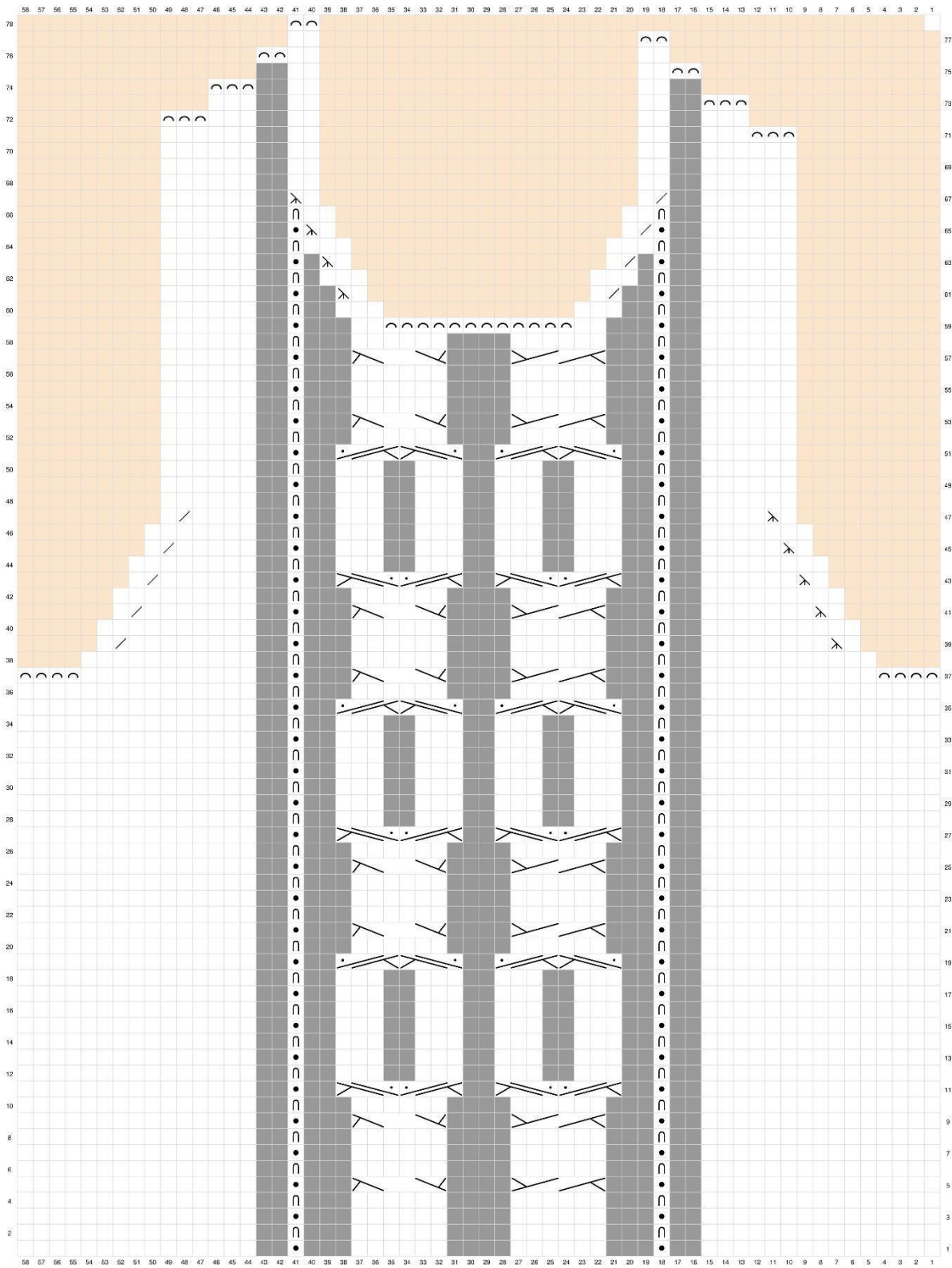
SIZE S - FRONT PANEL



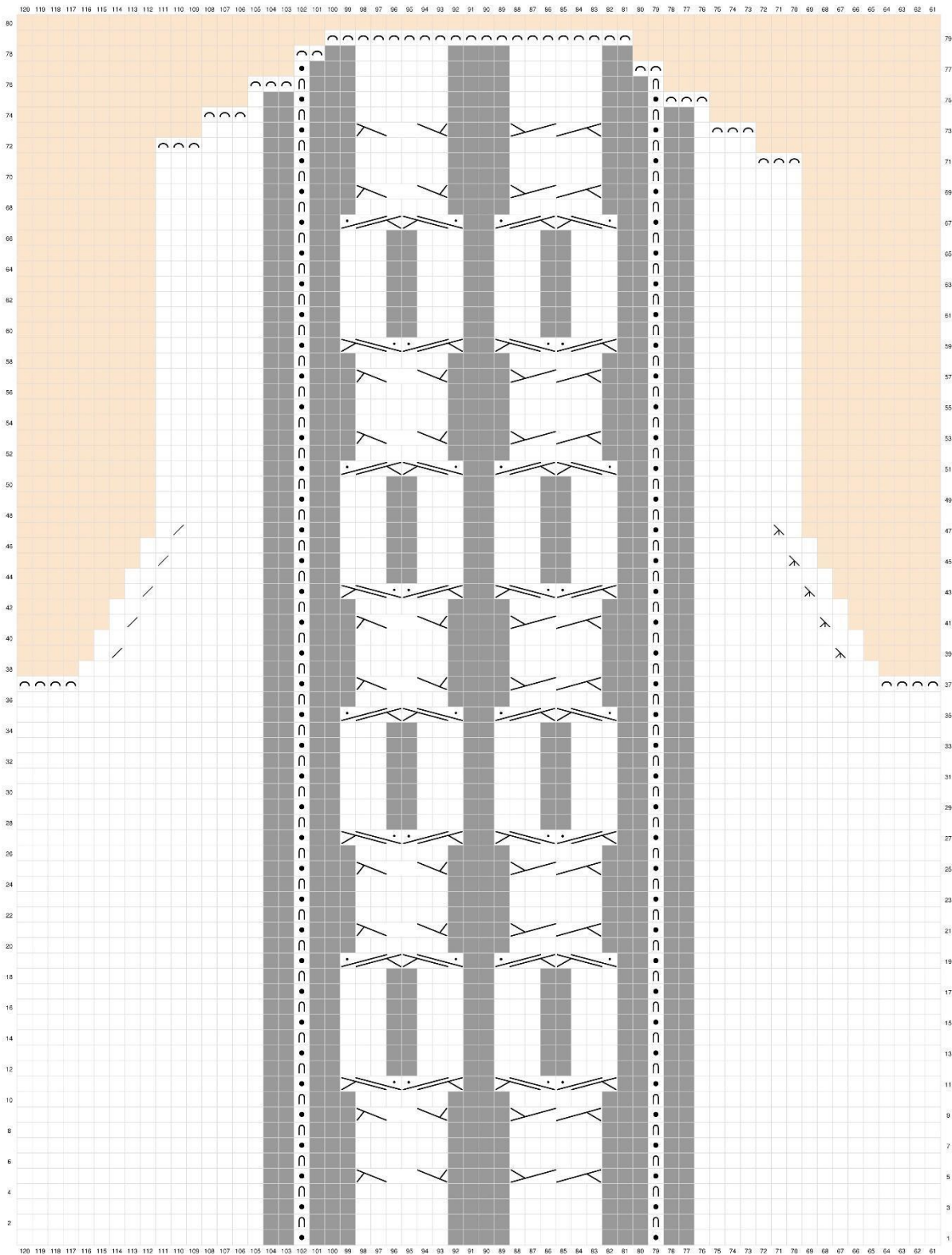
SIZE M - BACK PANEL



SIZE M - FRONT PANEL



SIZE L - BACK PANEL



SIZE L - FRONT PANEL

