

CROCHET PATTERN

# Geo Twister

Table Runner


Design: HOOKLOOPSARAH | Hobbii Design


## MATERIALS

2 skeins of Twister Solid, color 106  
1 skein of Twister Solid, color 126  
1 skein of Twister, color 39

Crochet hook 3 mm (11)

## YARN QUALITY

 **Twister Solid**, Hobbii  
55 % Cotton, 45 % Acrylic  
100 g = 400 m

 **Twister**, Hobbii  
55 % Cotton, 45 % Acrylic  
250 g = 1000 m

## GAUGE

10 cm x 10 cm (4" x 4") = 18 sts x 13 rows in  
mosaic crochet

## ABBREVIATIONS

ch = chain  
sc = single crochet  
scBLO = single crochet in the Back Loop  
Only  
ss = slip stitch  
dc = double crochet  
prev = previous  
st(s) = stitch(es)

col 1 = Twister solid col 106 + 126  
col 2 = Twister col 39

## SIZE

One size

## MEASUREMENTS

Width: 70 cm / 27.5"  
Length: 140 cm / 55.1"

## PATTERN INFORMATION

The runner is worked in overlay mosaic  
crochet, following a chart, using the dark  
shades of solid blue to mark the geometric  
design, while letting the beautiful colours of  
the self-stripping cake unwind, producing a  
wonderful optical effect. The runner can also  
be used as a wall-hanger.

## HASHTAGS FOR SOCIAL MEDIA

#hobbiigeotwister  
#hobbiidesign

## BUY THE YARN HERE

[https://shop.hobbii.com/geo-twister-table-ru  
ner](https://shop.hobbii.com/geo-twister-table-runner)



## QUESTIONS

If you have any questions regarding this pattern, please feel free to email us at  
[support@hobbii.com](mailto:support@hobbii.com)  
Please make sure to include the pattern's name and number.

Happy Crafting!

# Pattern



## INFO AND TIPS

This impressive runner is created using the overlay mosaic crochet technique, following Chart 1 (Chart A represents the module that is repeated 4 times). The optical effect is given not only by the geometric design, but also by the colours of the Twister cake, gradually turning from light into a darker shade.

### Rules of OVERLAY MOSAIC CROCHET used in this project

- You always work on the Right Side only of the project: this means you will attach yarn at the beginning and cut it off at the end of each row. This also means you will produce loads of yarn ends on both sides of your work: they will be hidden under a sc border at the end;
- You only use 2 stitches: Double Crochet and Single Crochet (standard and worked in the Back Loop Only);
- There is a chart to follow. The design in the chart is made of 2 colours, which correspond to the yarn colours you are using in the project. Each square in the chart corresponds to a stitch in the project.
- Each row of the chart is worked twice (2 passes): once in col 1 and another time in col 2. In this project, you will work a row taking into consideration the black squares only in the 1<sup>st</sup> pass, and the white squares only in the 2<sup>nd</sup> pass of the same row.
- You usually add 1 Single Crochet at the beginning and 1 sc at the end of each row in mosaic crochet. These shall be added to the stitch count of the project and will not be present in the chart. They create a sort of border to the project and will be used to attach and cut off yarn at the beginning and at the end of each row.
- You usually start a project with a row in sc in col 1, followed by a row in scBLO in col 2. These beginning rows will also NOT be present in the chart.

I will lead you through the first rows of this project (see Chart B), showing you how to read the chart. I advise you to print out Chart A and mark each completed row (i.e. after 2 passes). If you follow Chart A only, please consider this module is repeated four times (see Chart 1), so each row and column count shall be doubled horizontally and vertically.

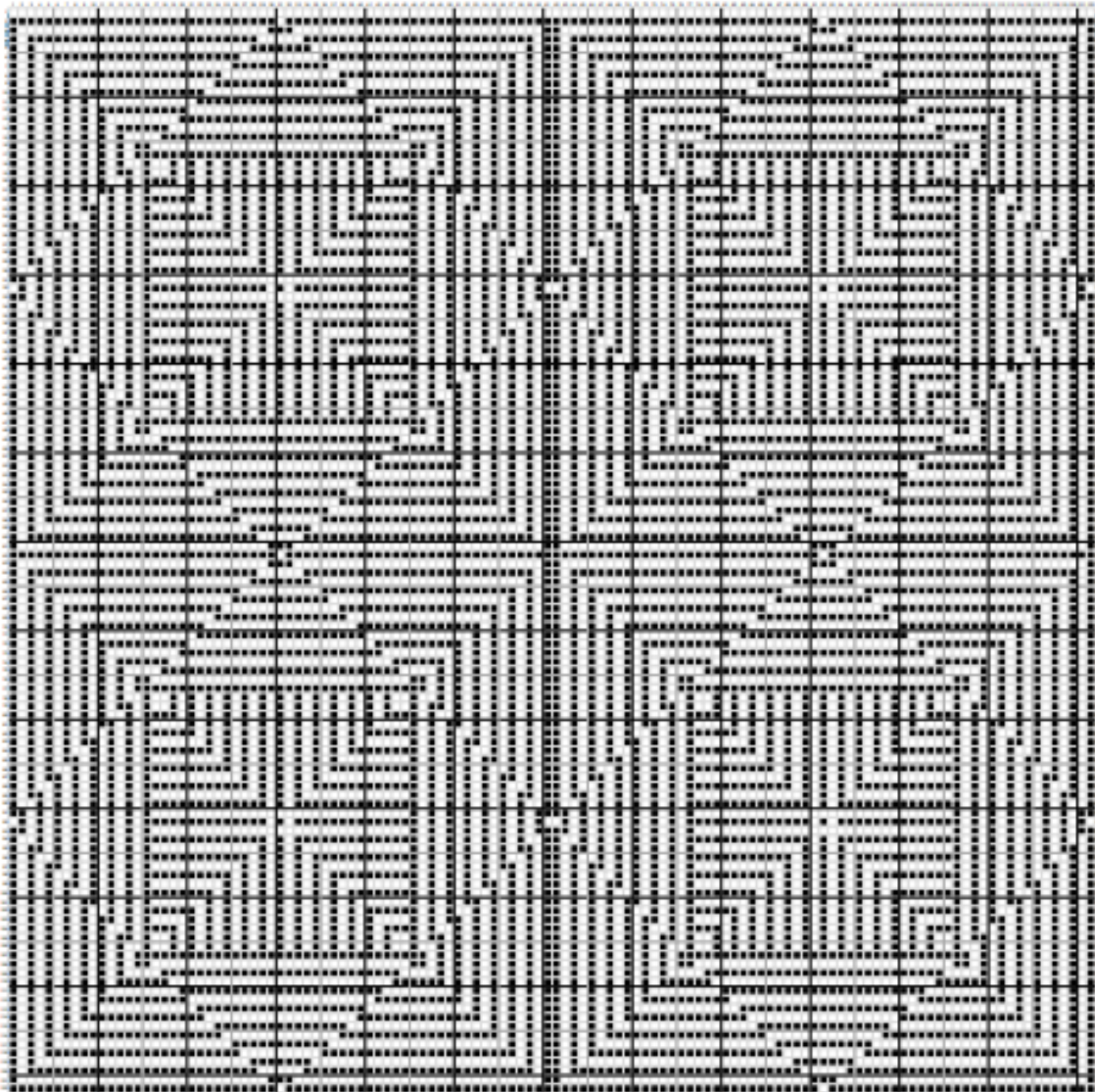


Chart 1

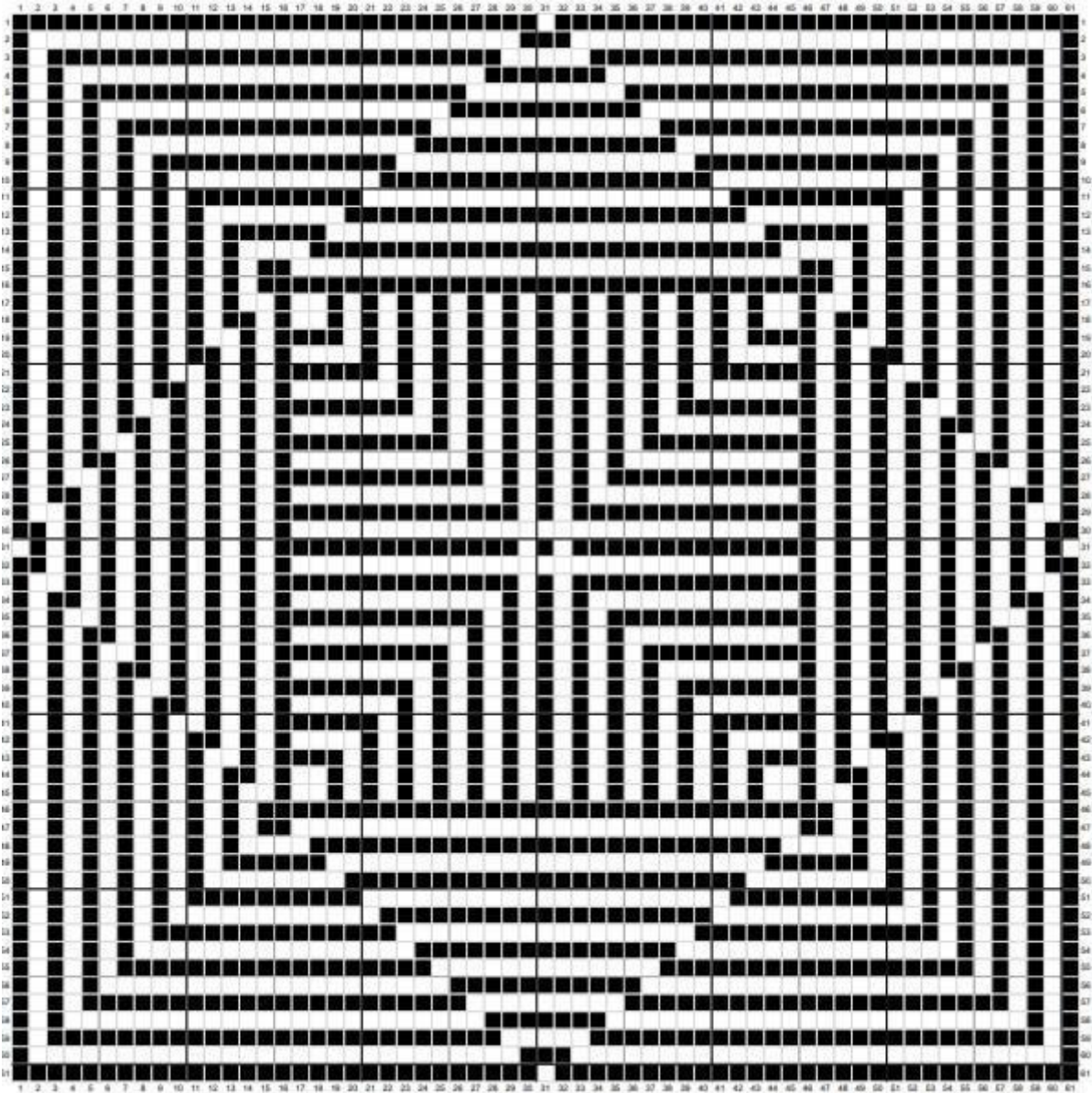


Chart A



Chart B

## BODY

**BEGINNING ROWS** (not in the chart): With col 1 (darker shade 106) ch 123 (i.e. 121 sts + 2 sc border sts), ch1 and create the 1<sup>st</sup> Row in sc, starting from the second ch from the hook. At the end of the row, cut off yarn in col 1, leaving a tail of about 10 cm (4").

**2<sup>nd</sup> ROW** (not in the chart). Attach col 2 and sc in 1<sup>st</sup> st of row (border sc). Then work in scBLO across, until last st of row. Work the last st of the row in sc (border sc). Cut off yarn in col 2.

Now follow the chart

col 1 = Twister solid clr 106 + 126 = BLACK SQUARES in the charts  
 col 2 = Twister col 39 = WHITE SQUARES in the charts (grey in Chart B)

ROW 1 (1<sup>st</sup> pass in col 1): attach yarn and make a border sc.

*Now consider the Black squares only. All White squares you encounter shall be considered as "no sts in col 1", so you will make a scBLO in them.*

Then – working over the scBLO in col 2 of prev row – 30 dc (you will anchor them to the SCs in col 1 of first beginning row, inserting the hook under the Front Loop Only of the sts, one row below), 1 scBLO, 60 dc, 1 scBLO, 30 dc. 1 border sc. Cut off col 1.

ROW 1 (2<sup>nd</sup> pass in col 2): attach yarn and make a border sc.

*Now consider the White squares only. All Black squares you encounter shall be considered as "no sts in col 2", so you will make a scBLO in them.*

Then 30 scBLO, 1 dc (anchor it to the Front Loop of the scBLO in col 2 of second beginning row, one row below), 60 scBLO, 1 dc, 30 scBLO. 1 border sc. Cut off col 2.

Row 1 is completed.

ROW 2 (1<sup>st</sup> pass in col 1): attach yarn and make a border sc. Then 1 dc (anchoring it to the dc in col 1, one row below), 28 scBLO, 1 dc, 1 sc, 1 dc, 28 scBLO, 2 dc, 28 scBLO, 1 dc, 1 sc, 1 dc, 28 scBLO, 1 dc. 1 border sc. Cut off col 1.

- Here you find another important rule of my overlay mosaic crochet technique: if all the sts you do not consider in a row shall be read as "no sts" in that colour and worked as scBLO, then all sts you DO consider (in the leading colour) shall be made as Double Crochets, anchoring them to the Front Loop of the sts in same col one row below. When anchoring one row below is not possible – because there is a Double Crochet in the opposite col there, as it happened in Row 2 above – you should make a sc in the leading colour (thus "1 dc, **1 sc**, 1 dc" in Row 2 above), working it on top of the dc in the opposite col.

ROW 2 (2<sup>nd</sup> pass in col 2): attach yarn and make a border sc. Then 1 scBLO, 28 dc (anchoring them to the Front Loops of the scBLOs in col 2, one row below), 3 scBLO, 28 dc, 2 scBLO, 28 dc, 3 scBLO, 28 dc, 1 scBLO. 1 border sc. Cut off col 2.

Row 2 is completed.

ROW 3 (col 1): attach yarn and make a border sc. Then 1 dc, 1 scBLO, 26 sc, 5 scBLO, 26 sc, 1 scBLO, 2 dc, 1 scBLO, 26 sc, 5 scBLO, 26 sc, 1 scBLO, 1 dc. 1 border sc. Cut off col 1.

ROW 3 (col 2): attach yarn and make a border sc. Then 1 scBLO, 1 dc, 26 scBLO, 5 dc, 26 scBLO, 1 dc, 2 scBLO, 1 dc, 26 scBLO, 5 dc, 26 scBLO, 1 dc, 1 scBLO. 1 border sc. Cut off col 2.

Row 3 is completed.

ROW 4 (col 1): border sc. Then 1 dc, 1 scBLO, 1 dc, 24 scBLO, 7 sc, 24 scBLO, 1 dc, 1 scBLO, 2 dc, 1 scBLO, 1 dc, 24 scBLO, 7 sc, 24 scBLO, 1 dc, 1 scBLO, 1 dc. Border sc.

ROW 4 (col 2): border sc. Then 1 scBLO, 1 dc, 1 scBLO, 24 dc, 7 scBLO, 24 dc, 1 scBLO, 1 dc, 2 scBLO, 1 dc, 1 scBLO, 24 dc, 7 scBLO, 24 dc, 1 scBLO, 1 dc, 1 scBLO. Border sc.

Row 4 is completed.

Proceed like this, following the pattern, until you complete Chart 1.

When the first cake of yarn in col 1 (Twister 106) is finished, attach the Twister cake 126 (lighter shade) as col 1. When this second cake is finished, attach the other cake in col 106. The self-stripping Twister cake 39 will last for the whole project.

Once Chart 1 is completed, work 2 rounds in sc and col 1 around the runner / wall art hanging, working over all of the yarn tails. In the 1<sup>st</sup> round, work \*1sc, ch3, 1sc in same st at corners. In the 2<sup>nd</sup> round, work \*1sc, ch2, 1sc in same space at corners.

Finally, cut off all yarns and weave in ends. Done!

**Enjoy!**

Sarah



HOOKLOOPSARAH