



KNITTING PATTERN

The Lover

Cardigan

Design: [AnxiousGirlKnits](#) | Hobbii Design



MATERIALS

Hobbii Amigo Chunky

3 (4) 4 (5) skeins of Primrose (A35)
4 (5) 5 (6) skeins of Delicate Rose (A47)
1 (1) 2 (2) skein(s) of Bright Red (A43)

Circular needles 8mm, 60 and 100cm (US 11)

Circular needles 7mm, 40 and 100cm (US 10.75)

Optional: Double pointed needles 7mm (US 10.75)

Tape measure
Stitch markers
Darning needle

YARN QUALITY

 **Amigo Chunky**, Hobbii

100% Acrylic
100 g (3.5 oz) = 100 m (109 yds)

GAUGE

10 cm x 10 cm (4" x 4") = 10 sts x 15 rows
on 8 mm needles

ABBREVIATIONS

K - knit
P - purl
C1 - color 1 (yellow)
C2 - color 2 (pink)
C3 - color 3 (red)
K2tog - knit two stitches together
P2tog - purl two stitches together
P1tbl - purl through the back loop
K1tbl - knit through the back loop
PM - place marker
RS - right side of work
WS - wrong side of work
* - repeat this section

QUESTIONS

If you have any questions regarding this pattern, please feel free to email us at

support@hobbii.com

Please make sure to include the pattern's name and number.

Happy Crafting!

SIZE

S (M) L (XL)

FLAT MEASUREMENTS

Width: 53 (60) 66 (72)cm / 20.8" (23.6") 26" (28.3")
Length: 50 (52) 54 (55)cm / 29.7" (20.5") 21.25"
(21.65")

PATTERN INFORMATION

This cardigan is knitted seamless bottom up in the flat. The hem is knitted in garter stitch and into stockinette stitch for the rest of the body. Color changes make the background of the border. Hearts are added on top with duplicate stitch. The body is split into back and 2 fronts to create the armholes, and 3 needle bind off for the shoulder. Stitches are picked up for the neck band and worked in 1x1 twisted rib. The sleeves are picked up and worked in the round in double moss stitch and decreased into a 1x1 rib cuff.

HASHTAGS FOR SOCIAL MEDIA

#Hobbiihthelover
#hobbiiidesign

BUY THE YARN HERE

<http://shop.hobbii.com/the-lover-cardigan>

Pattern



INFO AND TIPS

The hearts are added with duplicate stitch, worked from the bottom of the heart and up.

Color codes

C1: color Primrose (A35)

C2: color Delicate Rose (A47)

C3: color Bright Red (A43)

BODY

Using 8mm (US 11) 100cm circular needles chain cast on 99 (110) 121 (126) st in C1. Work in the flat work in garter stitch for 10 rows. The remaining body will be knitted in stockinette:

RS: K all

WS: P all

Work in stockinette until the piece measures 9cm/3.5" from the cast on edge.

You are now going to start knitting the contrast band around the hem. The hearts are added with duplicate stitch after the band is knitted. I've added the directions to this at the end of the body section, but if you're too excited to see them you can do it after the band is knitted.

The band is as follows in stockinette:

1 row in C3, 11 rows in C2, 1 row in C3.

Continue back in C1 until your piece measures 23 (25) 27 (28) cm /9" (9.8") 10.6" (11") from the cast on edge, make sure your last row was a WS row. (If you want to add extra length, add it here).

FRONT AND BACK PANELS

Divide the work into front and back panels. With the RS facing you, count 23 (25) 28 (30)st, place a marker. This will be your front right panel. Count 53 (60) 65 (72) st and place a marker, this will be your back panel. The last 23 (25) 28 (30) st will be your front left panel.

You will start by just working with the front right panel. You can either leave the others on the needle or put them on hold. Work the front right panel in stockinette until your piece measures 50 (52) 54 (55)cm/ 29.7" (20.5") 21.25" (21.65") from the cast on edge. Make sure your last row was a RS row.

Make note of how many rows you did so that all your panels are exactly the same size. Leave a tail of about 1.2m/45" and put these 23 (25) 28 (30)st on hold for later.

Back panel

Time to work the back panel. You should have 53 (60) 65 (72)st on the needle. With the RS facing you attach the yarn at the side closest to the right panel you just knit, and work in stockinette. Stop one row before you hit 50 (52) 54 (55)cm/ 29.7" (20.5") 21.25" (21.65") this will be a RS row.

Work as follows:

RS: k23 (25) 28 (30), co7 (10) 9 (12), k23 (25) 28 (30)

Cut the yarn leaving a long tail of about 1.2m/45"

Keep the 23 (25) 28 (30)st closest to the right front panel you have done on the needles, and put the left side on hold.

Front panel, right

Put the front right panel back on the needles. Put the front right and back right with RS together/WS facing you, 3 needle bind off the shoulder together starting from the armhole side into the neckline, using the long tail.

You now have the right side of the cardigan together!

Front panel, left

Put the front left side back on the needle, you will have 23 (25) 28 (30)st on the needle. With RS facing you, attach the yarn on the armhole side (closest to the back piece). Continue in stockinette until it measures 50 (52) 54 (55)cm/ 29.7" (20.5") 21.25" (21.65").

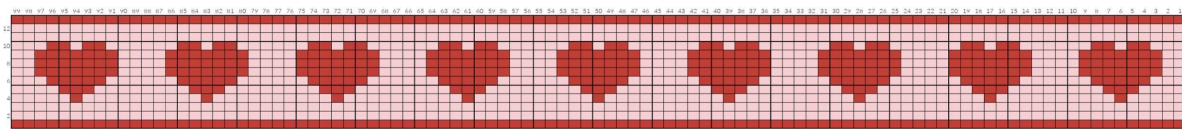
Put the back panel of 23 (25) 28 (30)st back on the needle and with RS together 3 needle bind off the shoulders together from the armhole side into the neckline, using the long tail.

HEARTS

In C3 use a sewing needle to duplicate stitch the hearts on top of the C2 section of the band. Follow the grid as below, the hearts will be on the 3rd pink row from the bottom and 3rd pink row from the top.

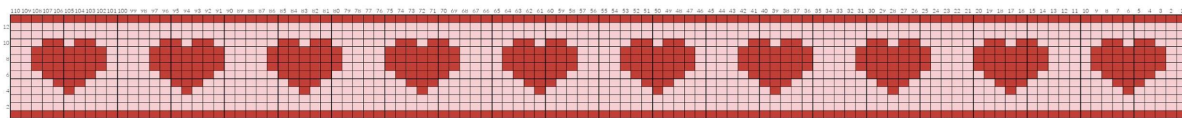
Size S

2st at either end of pink before the hearts, 4st of pink between each heart.



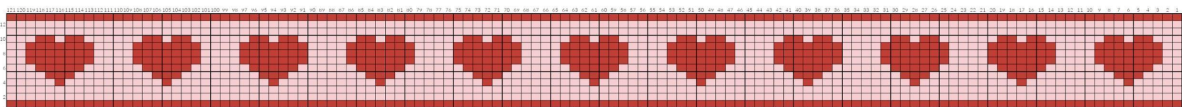
Size M

2st at either end of pink before the hearts, 4st of pink between each heart.



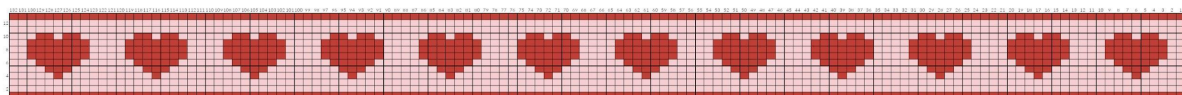
Size L

2st at either end of pink before the hearts, 4st of pink between each heart.



Size XL

2st at either end of pink before the hearts, 4st of pink between each heart.



NECK BAND

Using the 7mm (US 10.75) 100cm circular needles you will now pick up stitches around the front opening and back neck in C3. With the right side facing toward you, pick up 1st for every row and 6 (10) 8 (12) st across the back neck.

Work in 1x1 twisted rib (p1tbl, k1tbl) until your work measures 4cm/1.5"

Rib cast off all stitches.

SLEEVES

Repeat for both armholes

Using 8mm (US 11) 60cm circular needles with RS facing you pick up 60st with C2 around the armhole. Starting from the underarm, 30st front, 30st back. Place a marker to mark the start of the round. *(Sleeve is the same width for all sizes)*

You will be knitting in the round in double moss stitch. Repeat below:

Row 1 + 2 : K1, P1

Row 3 + 4 : P1, K1

Continue in pattern until the sleeve measures 40 (40) 42 (42)cm/15.7" (15.7") 16.5" (16.5") from the armhole. *(if you want to shorten or lengthen do it here)*

Make sure your last row is a row 3

Change your needles to 7mm 40cm circular - you will now start to decrease for the cuff.

Row 1 *P2tog, K2tog* repeat to pm. (30st remaining)

Row 2 *K1, P2tog* repeat to pm (20st remaining)

Decreases are done. Work in 1x1 rib (K1, P1) for 6cm/2.35". You can use magic loop on your 40cm needles or you can use double pointed needles.

Once at desired length cast off all stitches. I like to use tubular cast off.

Finishing touches

Weave in any ends

And voila!

You're done!!

Tag me in your finished pictures on Instagram @anxiousgirlknits.

A pink square containing the text "Anxious Girl" in a white, handwritten-style font. The word "Anxious" is on the top line and "Girl" is on the bottom line, with a small heart symbol replacing the letter 'o' in "Anxious".

Anxious
Girl