



CROCHET PATTERN

# Ruddock the Robin

Design: [littleellies\\_handmade](#) | Hobbii Design




## MATERIALS

1 skein of Amigo, Dark Beige A04  
1 skein of Amigo, Walnut A05  
1 skein of Amigo, Chocolate A06  
1 skein of Amigo, Christmas Red A42  
1 skein of Amigo, Gray Melange A09

Crochet hook 2 mm (US B/1)  
2 safety eyes 10 mm  
Soft stuffing  
Embroidery needle  
Stitch markers  
Scissors

## YARN QUALITY

 **Amigo**, Hobbii  
100 % Acrylic  
50 g / 1.8 oz = 175 m / 191 yds

## ABBREVIATIONS

ch = chain  
rnd = round  
sc = single crochet  
hdc = half double crochet  
inc = increase, 2 sts in the same stitch  
dec = decrease, 2 sts together  
blo/ flo = back/ front loop only  
(...) "x" times = repeat by amount "x"  
[...] = total stitches

## SIZE

One size

## MEASUREMENTS

Height: Approx. 20cm (7,8")

## PATTERN INFORMATION

My patterns are tightly stitched with a smaller than average hook, this is to keep the rounds neat and prevent the stuffing from being seen.

Use stitch markers to mark your rounds. I mention in the pattern a few places where they help with situating Ruddocks features.

## HASHTAGS FOR SOCIAL MEDIA

#hobbiidesign #hobbiiruddock

## BUY THE YARN HERE

<http://shop.hobbii.com/ruddock-the-robin>

## QUESTIONS

If you have any questions regarding this pattern, please feel free to email us at [support@hobbii.com](mailto:support@hobbii.com)  
Please make sure to include the pattern's name and number.

Happy Crafting!

# Pattern



## HEAD

In **Dark Beige (A04)**

Rnd 1: start with 6 sc in a magic ring [6]

Rnd 2: inc in all 6 sts [12]

Rnd 3: (sc in next st, inc in next st) 6 times [18]

Rnd 4: (sc in next 2 sts, inc in next st) 6 times [24]

Rnd 5: (sc in next 3 sts, inc in next st) 6 times [30]

Rnd 6: (sc in next 4 sts, inc in next st) 6 times [36]

Rnd 7: (sc in next 5 sts, inc in next st) 6 times [42]

Rnds 8 - 13: sc in all 42 sts [42]

Rnd 14: (sc in next 6 sts, inc in next st) 6 times [48]

Rnd 15: sc in next 7 sts, inc in next st, sc in the next 15 sts, inc in the next st, sc in the next 7 sts, inc in the next st, sc in the next 16 sts [51]

Rnd 16: sc in all 51 sts [51]

Rnd 17: sc in next 8 sts, inc in next st, sc in the next 13 sts, inc in the next st, sc in the next 10 sts, inc in the next st, sc in the next 17 sts [54]

Place st markers after every second inc on rnd 18, this will help with positioning of the eyes and other features.

Rnd 18: sc in next 8 sts, inc in next 3 sts, sc in the next 24 sts, inc in the next 3 sts, sc in the next 16 sts [60]

Rnd 19: sc in next 11 sts, inc in next st, sc in the next 28 sts, inc in the next st, sc in the next 19 sts [62]

Place safety eyes between Rnds 14 - 15, 8 sts from the markers placed on rnd 18 of the head. Do not place the safety backs on until the face patch is stitched onto the head.

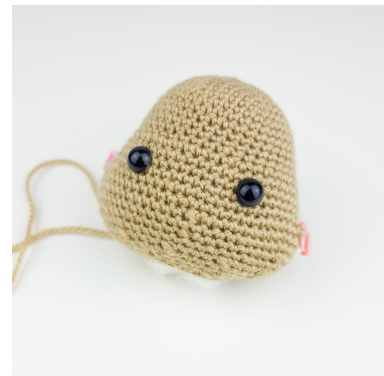
Rnd 20: sc in next 29 sts, dec in next st, sc in the next 29 sts, dec in the next st [60]

Rnd 21: sc in all 60 sts [60]

Rnd 22: (sc in next 8 sts, dec in next st) 6 times [54]

Rnd 23: sc in next 9 sts, dec in next st, sc in the next st, dec in next st, sc in next 21 sts, dec in next st, sc in the next st, dec in next st, sc in the next 14 sts [50]

Rnd 24: (sc in next 3 sts, dec in next st) 10 times [40]



Rnd 25: sc in next 7 sts, (dec in next st) 2 times, sc in the next 16 sts, (dec in next st) 2 times, sc in next 9 sts [36]

Rnd 26: (sc in next 4 sts, dec in next st) 6 times [30]

Rnd 27: (sc in next 3 sts, dec in next st) 6 times [24]

Rnd 28: sc in all 24 sts [24], stuff the head firmly.

Fasten off and leave a long thread for sewing the head to the body.

## FACE PATCH

In **Christmas Red (A42)**

Rnd 1: start with 6 sc in a magic ring [6]

Rnd 2: inc in all 6 sts [12]

Rnd 3: (sc in next st, inc in next st) 6 times [18]

Rnd 4: (sc in next 2 sts, inc in next st) 6 times [24]

Rnd 5: (sc in next 3 sts, inc in next st) 6 times [30]

Rnd 6: (sc in next 4 sts, inc in next st) 6 times [36]

Rnd 7: (sc in next 5 sts, inc in next st) 6 times [42]

At this point check to see if the patch is wide enough to fit between the eyes. If so, ignore rnd 8. Continue with rnd 8 if necessary.

Rnd 8: hdc in all 42 sts [42], fasten off and leave a long thread for sewing to the head.

Sew the patch in the middle of the head, rnds 15 - 27. The eyes should sit on the edge of the patch. Once you're happy, add the backs of the eyes firmly.



## BEAK

In **Gray Melange (A09)**

Rnd 1: start with 6 sc in a magic ring [6]

Rnd 2: sc in all 6 sts [6]

Rnd 3: (sc in next st, inc in next st) 3 times [9]

Rnd 4 - 5: sc in all 9 sts [9], stuff firmly.

Fasten off and sew to the face patch after it has been sewn to the head.

The beak should sit on rnds 3 - 6 of the face patch, between the eyes.



## FRILL

In **Dark Beige (A04)**

Rnd 1: start with chain 10, turn. [10]

Rnd 2: ignore the first ch, sc in all 9 chs [9]

Rnd 3: chain 9, turn. [9]

Rnd 4: ignore the first ch, sc in all 8 chs [8]

Rnd 5: chain 5, turn. [5]

Rnd 6: ignore the first ch, sc in all 5 chs [5]

Fasten off and sew the frill to rnd 1 of the head. See images above for reference.

## BODY

In **Dark Beige (A04)**

Rnd 1: start with 6 sc in a magic ring [6]

Rnd 2: inc in all 6 sts [12]

Rnd 3: (sc in next st, inc in next st) 6 times [18]

Rnd 4: (sc in next 2 sts, inc in next st) 6 times [24]

Rnd 5: (sc in next 3 sts, inc in next st) 6 times [30]

Rnd 6: (sc in next 4 sts, inc in next st) 6 times [36]

Rnd 7: (sc in next 5 sts, inc in next st) 6 times [42]

Rnd 8: (sc in next 6 sts, inc in next st) 6 times [48]

Rnds 9 - 15: sc in all 48 sts [48]

Rnd 16: (sc in next 6 sts, dec in next st) 6 times [42]

Rnds 17 - 18: sc in all 42 sts [42]

Rnd 19: (sc in next 5 sts, dec in next st) 6 times [36]

Rnds 20 - 23: sc in all 36 sts [36]

Rnd 24: (sc in next 4 sts, dec in next st) 6 times [30]

Rnds 25 - 28: sc in all 30 sts [30]

Rnd 29: (sc in next 3 sts, dec in next st) 6 times [24]

Rnds 30: sc in all 24 sts [24], stuff firmly. Fasten off and weave in the yarn end, then take the thread from the head and sew the body and head together.



## CHEST PATCH

In **Christmas Red (A42)**

Rnd 1: start with 6 sc in a magic ring [6]

Rnd 2: inc in all 6 sts [12]

Rnd 3: (sc in next st, inc in next st) 6 times [18]

Rnd 4: (sc in next 2 sts, inc in next st) 6 times [24]

Rnd 5: (sc in next 3 sts, inc in next st) 6 times [30]

Rnd 6: sc in next 4 sts, inc in next st, (sc in the next st, ch 4) 15 times, (sc in the next 4 sts, inc in the st) 2 times [33], fasten off.

Sew the patch above rnd 6 to the centre of the body.



The chest and face patch should be touching, once the head and body are sewn together.

## WINGS

Make two in **Dark Beige (A04)**

Rnd 1: start with 6 sc in a magic ring [6]

Rnd 2: inc in all 6 sts [12]

Rnd 3: (sc in next st, inc in next st) 6 times [18]

Rnds 4 - 5: sc in all 18 sts [18]

Rnd 6: sc in next 8 sts, inc in next 2 sts, sc in next 8 sts [20]

Rnd 7: sc in next 9 sts, inc in next 3 sts, sc in next 8 sts [23]

Rnds 8 - 10: sc in all 23 sts [23]

**Blo sc in rnd 11.**

Rnd 11: dec, sc in next 10 sts, inc in next st, sc in next 10 sts [23]

Rnd 12: dec, sc in next 10 sts, inc in next st, sc in next 10 sts [23]

Rnd 13: sc in all 23 sts [23]

Change to **walnut** yarn.

Rnd 14: dec, sc in next 19 sts, dec in next st [21]

**Blo sc in rnd 15.**

Rnd 15: sc in all 21 sts [21]



Rnd 16: dec, sc in next 19 sts [20]  
 Rnd 17: sc in all 20 sts [20]  
 Change to **chocolate** yarn.  
 Rnd 18: sc in all 20 sts [20]  
 Rnd 19: (sc in next 3 sts, dec in next st) 4 times [16]  
 Rnd 20 : sc in all 16 sts [16]  
 Rnd 21: dec in next st, sc in next 12 sts, dec in next st. [14]  
 Rnd 22: sc in all 14 sts [14], stuff the wings gradually, take care not to over stuff.  
 Rnd 23: dec, sc in next 8 sts, dec in next st [10]  
 Rnd 24: (sc in next 3 sts, dec in next st) 2 times [8]  
 Rnd 25: sc in all 8 sts [8]  
 Rnd 26: dec in all 8 sts [4]  
 Fasten off and use the thread to stitch the wings to the side of the body.

Now you will be working in the rnds with the blo section (rnd 11 and rnd 15).

#### In **Dark Beige (A04)**

Rnd 11: (Ch 5, turn, hdc inc in second ch, sc in next 3 chs, sc in next 2 sts) 11 times. Sl st in the last st.

#### In **Walnut (A05)**

Rnd 15: (Ch 5, turn, hdc inc in second ch, sc in next 3 chs, sc in next 2 sts) 10 times. Sl st in the last st.

Fasten off and using each colour thread, stitch the wing to the sides of the body. Align the wings with the markers on the head, at rnd 28. The tips of the wings should touch the surface on which it's sat on when placed.

## TOES

Make three in **Walnut (A05)**

Rnd 1: start with 6 sc in a magic ring [6]  
 Rnds 2 - 4: sc in all 6 sts [6], fasten off two, leave the third and work rnd 5.  
 Rnd 5: sc in all 6 sts [6]

Now you will attach all three toes together to create the foot.  
 Start the next round with the third toe.  
 Stuff the toes and foot gradually, throughout.

[x] indicates the amount of total stitches per section of rnd 6, not overall.

Rnd 6: sc in next 3 sts [3] Connect a toe and Sc in the next 3 sts [6] Connect the last toe and sc in the next 6 sts [12] Working back around, connect and sc in the next 3 sts [15] Connect to the last toe and sc in the next 3 sts [18]

Rnds 7 - 9: sc in all 18 sts [18]

Rnd 10: (sc in next st, dec in the next st) 6 times [12]

Rnd 11: (sc in next 4 sts, dec in the next st) 2 times [10]

Rnd 12: sc in all 10 sts [10], stuff gradually.

Rnd 13: (sc in next 3 sts, dec in the next st) 2 times [8]

Rnd 14: (sc in next 2 sts, dec in the next st) 2 times [6], fasten off and use the thread to sew to the ankle.

Pull the thread through and up the middle of the foot, rnd 7/8.

This will be the thread that sews the foot and ankle together.

Now repeat the process again to make two feet in total.





## ANKLES

Make two in **Walnut (A05)**

Rnd 1: start with 6 sc in a magic ring [6]  
 Rnd 2: (sc in next st, inc in next st) 3 times [9]

**Blo sc in the next rnd.**

Rnd 3: sc in all 9 sts [9]

Rnds 4 - 5: sc in all 9 sts [9]

Change to **Dark Beige** yarn.

Rnd 6: (sc in next 2 sts, inc in next st) 3 times [12]

Rnd 7: (sc in next 3 sts, inc in next st) 3 times [15]

Rnd 8: sc in all 15 sts [15], stuff gradually.

Rnd 9: (sc in next 4 sts, inc in next st) 3 times [18]

Rnd 10: sc in all 18 sts [18], fasten off and use this thread to stitch the legs to the body.

To connect the foot and ankle together, take the thread from the foot and sew into rnd 3 (blo rnd), until the foot and the ankle is firmly fixed together. Do this for both, before sewing to the body. Pin the legs between rnds 6 and 13.

There should be between 6 and 7 sts gap between both legs.

Once you're happy, sew them in place.



## LARGE TAIL FEATHERS

Make two in **Dark Beige (A04)**

Rnd 1: start with 6 sc in a magic ring [6]

Rnd 2: sc in all 6 sts [6]

Rnd 3: (sc in next 2 sts, inc in next st) 2 times [8]

Rnds 4 - 12: sc in all 8 sts [8], fasten off and hide the thread for the first tail feather.

Now repeat the process to make the second large tail feather.

Continue to rnd 13, with the second tail feather.

Rnd 13: fold in half, sc through all 4 sts, connect and sc through all 4 sts on the second large feather [8], fasten off and use the thread to sew to the body.

See image below for reference when crocheting two feathers together.



## MEDIUM TAIL FEATHERS

Make two in **Walnut (A05)**

Rnd 1: start with 6 sc in a magic ring [6]

Rnd 2: sc in all 6 sts [6]

Rnd 3: (sc in next 2 sts, inc in next st) 2 times [8]

Rnds 4 - 9: sc in all 8 sts [8], fasten off and hide the thread for both feathers.

## SMALL TAIL FEATHERS

Make two in **Walnut (A05)**

Rnd 1: start with 6 sc in a magic ring [6]

Rnds 2 - 4: sc in all 6 sts [6]

Rnd 5: fold in half, sc through all 3 sts on both sides, connect and sc through all 4 sts on the middle tail feather on both sides [6], fasten off and sew beside the large feathers 2 rnds up.

Now repeat the process to make the second small tail feather.

You should now have three sets of feathers. Use the image above with all the feathers to help when sewing them all to the body.

Starting with the connected large tail feathers, sew them in the middle of Rnd 9 of the body. They should touch the surface on which Ruddock is sat on when placed.

Sew the now connected middle and small feather, beside the large feathers 2 rnds up on Rnd 11. They should overlap slightly, use the second image on Page 3 to help you.

Ruddock is now complete.



## Enjoy!

Littleellies\_handmade

