



CROCHET PATTERN

Woven Rainbow Pillow

Design: OneStopWonders | Hobbii Design

MATERIALS


Rainbow Cotton 8/8

- 1 Pink x 1 skein (colour 044)
- 2 Purple x 1 skein (colour 039)
- 3 Light Blue x 1 skein (colour 034)
- 4 Blue x 1 skein (colour 031)
- 5 Green x 1 skein (colour 022)
- 6 Yellow x 1 skein (colour 090)
- 7 Orange x 1 skein (colour 066)
- 8 Red x 1 skein (colour 059)
- 9 White x 4 skeins (colour 002)

Crochet hook 3.5 mm (US E/4)

Wooden Buttons - Hearts - 18 mm (0.71 in)
Pillow insert 16.5" x 16.5" (42 cm x 42 cm)
Tapestry needle
Scissors
Stitch markers

YARN QUALITY

 **Rainbow 8/8**, Hobbii
100 % Cotton
50 g = 75 m (82 yds)

GAUGE

Front:

Woven = 5 cm x 5 cm (2" x 2") = 11 sts x 11 rows

Back:

HDC = 5 cm x 5 cm (2" x 2") = 9 sts x 6 rows

ABBREVIATIONS

ch = chain
sc = single crochet
hdc = half double crochet
ch sp = chain space
Ch-# sp = chain-number space
REP = repeat

QUESTIONS

If you have any questions regarding this pattern, please feel free to email us at support@hobbii.com
Please make sure to include the pattern's name and number.

Happy Crafting!

SIZE

One size

MEASUREMENTS

Front Panel:

16" x 16" (appr. 40.5 cm x 40.5 cm)

Back Panels:

9" x 16" (appr. 23 cm x 40.5 cm)

Finished:

16" x 16" (appr. 40.5 cm x 40.5 cm)

PATTERN INFORMATION

This rainbow design is super easy to make. It is worked using the weave stitch, also known as the moss or granite stitch.

HASHTAGS FOR SOCIAL MEDIA

#hobbiiwovenrainbow
#hobbiiidesign

BUY THE YARN HERE

<http://shop.hobbii.com/woven-rainbow-pillow>



Pattern



INFO AND TIPS

If your gauge loosens you can adjust the number of rows per colour. You want each row to equal 4" (10 cm) for each colour, but it cannot be larger than 4" /10 cm or it will not fit your pillow insert. When you start decreasing, you want your gauge to match the increasing rows or you may end up with significantly less rows on your last colour.

The CH-2 always counts as a stitch. Work in the CH-2 space instead of in the CH-2 stitch. It will cause a small hole to appear at the edge, but it will not show once you seam the panels together. As you increase, your stitch count increases 2 STS per row. As you decrease, you'll be decreasing 2 STS per row.

TIP: You'll always work your (SC, CH-1) in the CH-1 space from the previous row. You'll always increase at the end of your row in the CH-2 SP with an SC, CH-1, SC.

BODY

Start with Colour 1. **CH-3**

Row 1: In the third ST from hook, SC. TURN. (2)

Row 2: CH-2. In the CH-3 SP (your turning chain), SC, CH-1, SC. TURN. (4)

Row 3: CH-2. In the CH-1 SP, SC, CH-1. In the CH-2 SP, SC, CH-1, SC. TURN. (6)

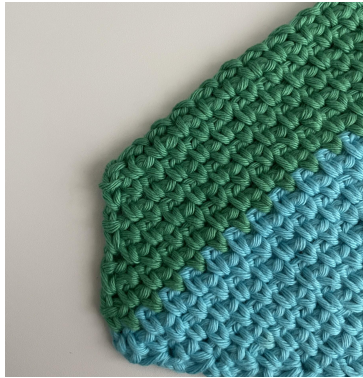
Row 4: CH-2. In each CH-1 SP across, *(SC, CH-1). REP from * () until the CH-2 SP. SC, CH-1, SC in the CH-2 SP. TURN. (8)

Rows 5 - 15: REP Row 4 until you finish row 15 or until it reaches 4" / 10 cm. Switch to COLOUR 2 at the end of the last row.

Rows 16 - 30: REP Row 4 until you finish row 30 or until it reaches 4" / 10 cm. Switch to COLOUR 3 at the end of the last row.

Rows 31 - 45: REP Row 4 until you finish row 45 or until it reaches 4" / 10 cm. Switch to COLOUR 4 at the end of the last row.

Rows 46 - 60: REP Row 4 until you finish row 60 or until it reaches 4" / 10 cm. Switch to COLOUR 5 at the end of the last row



Decreasing:

Your pillow should measure 16" / 40.5 cm. Make sure to measure from the edges.

Row 61: CH-2. SKIP the first 3 STS (*skipping the SC, CH-1, SC*). In the next CH-1 sp, SC, CH-1. In each CH-1 SP across, *(SC, CH-1) REP from * () until the last two stitches (*the SC and CH-2*) ending with an SC only. Do not CH-1 after the last SC on your hook, SC in CH-2 SP. TURN. (118)

Row 62: CH-2. SKIP the first 2 STS (*skipping the two SC STS*). In the CH-1 sp, SC, CH-1. In each CH-1 SP across, *(SC, CH-1) REP from * () until the last two stitches (*the SC and CH-2*) ending with an SC only. Do not CH-1 after the last SC on your hook, SC in CH-2 SP. TURN. (116)

Rows 63 - 75: REP Row 62 until you finish row 75 or until it reaches 4" / 10 cm. Switch to COLOUR 6 at the end of the last row.

Rows 76 - 90: REP Row 62 until you finish row 90 or until it reaches 4" / 10 cm. Switch to COLOUR 7 at the end of the last row.

Rows 91 - 105 : REP Row 62 until you finish row 105 or until it reaches 4" / 10 cm. Switch to COLOUR 8 at the end of the last row.

Rows 92 - 118: REP Row 62 until the last two rows below or until you have only 2 SC + CH-2 SP left, not counting the CH-1's in between.

Row 119: CH-2, SKIP the first 2 STS. SC in CH-2 SP. TURN.

Row 120: CH-1. SC in the CH-2 SP.

Fasten off and sew in your ends. *Photos below show ROW 119.*



BACK PANEL 1

Start with Colour 9. Turning chain counts as the first ST. CH-1 does not count as a ST.



CH-57 + 2 for turning chain

Row 1: HDC in third chain from hook. HDC across. TURN. (58)

Rows 2 - 5: CH-1. HDC across. TURN. (58)

Change to Colour 1

Row 6: CH-1. HDC across. TURN. (58)

Change to Colour 9

Rows 7 - 10: CH-1. HDC across. TURN. (58)

Change to Colour 2

Row 11: CH-1. HDC across. TURN. (58)

Change to Colour 9

Rows 12 - 15: CH-1. HDC across. TURN. (58)

Change to Colour 3

Row 16: CH-1. HDC across. TURN. (58)

Change to Colour 9

Rows 17 - 20: CH-1. HDC across. TURN. (58)

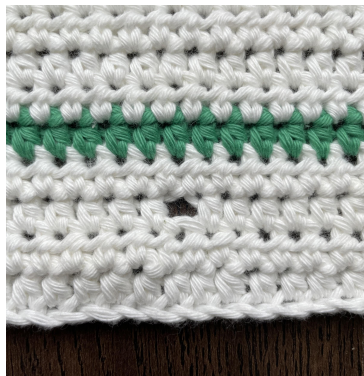
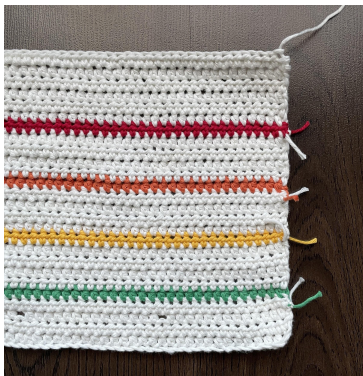
Change to Colour 4

Row 21: CH-1. HDC across. TURN. (58)

Change to Colour 9

Rows 22 - 26: CH-1. HDC across. TURN. (58)

Fasten off.



BACK PANEL 2

You'll be creating button holes in this one. You can skip Row 2 and repeat row 3 one more time instead if you do not want buttonholes.

Start with Colour 9. Turning chain counts as the first ST. CH-1 does not count as a ST.

CH-57 + 2 for turning chain

Row 1: HDC in third chain from hook. HDC across. TURN. (58)

Row 2: CH-1. 13 HDC, CH-1, SK-1, *(14 HDC, CH-1, SK-1). REP from *() 1 more time. 14 HDC across. (58)

Rows 3 - 5: CH-1. HDC across. TURN. (58)

Change to Colour 5

Row 6: CH-1. HDC across. TURN. (58)

Change to Colour 9

Rows 7 - 10: CH-1. HDC across. TURN. (58)

Change to Colour 6

Row 11: CH-1. HDC across. TURN. (58)

Change to Colour 9

Rows 12 - 15: CH-1. HDC across. TURN. (58)

Change to Colour 7

Row 16: CH-1. HDC across. TURN. (58)

Change to Colour 9

Rows 17 - 20: CH-1. HDC across. TURN. (58)

Change to Colour 8

Row 21: CH-1. HDC across. TURN. (58)

Change to Colour 9

Rows 22 - 26: CH-1. HDC across. TURN. (58)

Fasten off and sew in loose ends.

CONSTRUCT

1.) Place your front panel down with either side facing up. With the red at the top and the pink at the bottom.



2.) Place Back Panel 1 on the bottom with the pink stripe facing towards the bottom edge like in the photo above.

3.) Place Back Panel 2 with the red stripe closest to the top of the pillow's edge like in the photo above.

4.) The two back panels should be slightly overlapping with Back Panel 2 on top of panel 1. Otherwise your buttons will be on the wrong side.

5.) Pin down your work with stitch markers. Flip your work around so the colourful side is facing up.

6.) Work in any of the 4 corners. With Colour 9 and a slip knot on your hook, insert your hook into any of the corners. Make sure to go between both panels.

7.) Work 3 SC into the corner. Now SC down the edge of your work. It's approximately 1 SC per row, but you can adjust and skip a row if your work starts to warp due to too many stitches. Work 3 SC into each corner and continue to SC across until you're back around to the first SC. SL ST to the first SC.

8.) Fasten off and sew in all loose ends.

Buttons:

This is optional.

Sew the 3 buttons to the Back Panel 1.



Enjoy!

OneStopWonders

