



**KNITTING PATTERN**

# Fjeld

**Men's Sweater**

**Design:** Hobbii Design




## MATERIALS

7 (7) 8 skeins of Arctica Light Grey (06)  
4 (4) 5 skeins of Arctica Dark Grey (07)

Circular needles size 5 mm (US 8), 40 cm  
(or double pointed needles)  
Circular needles size 5 mm (US 8), 80 cm  
Circular needles size 6 mm (US 10), 40 cm  
(or double pointed needles)  
Circular needles size 6 mm (US 10), 80 cm

## YARN QUALITY

 **Arctica**, Hobbii  
100 % Wool  
50 g (1.75 oz) = 90 m (98 yds)

## GAUGE

10 x 10 cm (4" x 4") = 14 sts x 18 rows

## ABBREVIATIONS

K = knit  
P = purl  
St(s) = stitch(es)  
CO = cast on  
BO = bind off

## SIZE

S/M (L) XL/XXL

## MEASUREMENTS

Length: 66 (70) 72 cm / 26 (27.5) 28.3 inches  
Chest circumference: 91 (102) 114 cm / 36 (40) 45 inches

## PATTERN INFORMATION

Fjeld is a gorgeous men's sweater in the rustic Arctica yarn, that will keep you warm in all kinds of weather. The sweater is worked bottom-up on circular needles in Fair Isle pattern, following a chart.

## HASHTAGS FOR SOCIAL MEDIA

#hobbiidesign #hobbiifjeld

## BUY THE YARN HERE

<http://shop.hobbii.com/fjeld-men-s-sweater>



## QUESTIONS

If you have any questions regarding this pattern, please feel free to email us at [support@hobbii.com](mailto:support@hobbii.com)  
Please make sure to include the pattern's name and number.

Happy Crafting!

# Pattern



## TIPS AND INFO

The sweater is worked bottom-up on circular needles following a chart. It is crucial to maintain gauge throughout. Needle sizes for the pattern is only a guide. Also remember to try the sweater on along the way in order to be able to adjust the length of the body and sleeves.

You will work the lice stitch pattern on the body and sleeves (see chart).

## BODY

### Ribbing

Worked in the round. With circular needles size 5 mm (US 8), 80 cm and Arctica Light Grey (06), CO 128 (144) 160 sts and purl one round. Change color to Arctica Dark Grey (07) and knit one round, now work 14 rounds of ribbing (k1, p1)

## BACK AND FRONT PANELS

Change to circular needles size 6 mm (US 10), 80 cm and knit one round. Then work section 1 according to the chart. Now work lice stitch pattern until work measures 42 (46) 46 cm/ 16.5 (18) 18 inches or until desired length (you will want an uneven number of lice stitch rounds). BO for armholes (on a round without lice stitch) as follows: BO 4 sts, knit 55 (63) 71 sts, BO 9 sts, knit 55 (63) 71 sts, BO 5 sts. Let work rest and knit the sleeves.

## SLEEVES

Worked in the round. With circular needles size 5 mm (US 8), 40 cm (or double pointed needles) and Arctica Light Grey (06), CO 38 (40) 42 sts and purl one round. Change color to Arctica Dark Grey (07) and knit one round, now work 14 rounds of ribbing (k1, p1). Change to circular needles size 6 mm (US 10), 40 cm (or double pointed needles) and knit one round, while at the same time increasing 1 st.

Now work section 1 according to the chart but working the first and last st of every round with color 06. Now work lice stitch pattern while increasing every 12 rounds as follows: Work 1 st with Arctica Light Grey (06), increase 1 st, knit until 1 st remains on round, increase 1 st, work 1 st with Arctica Light Grey (06). Continue increasing until you have 47 (51) 55 sts on the sleeve. Then continue even in lice stitch pattern until work measures 47 (50) 50 cm/18.5 (19.7) 19.7 inches or desired length (you need an uneven number of lice st rounds). Now BO the middle 6 (10) 6 sts of the sleeve.

## YOKE

Join all sts on circular needles size 6 mm (US 8), 80 cm with the sleeves where sts were bound off on the back and front panel = 192 (208) 240 sts. The beginning of round will now be between the sleeve and the left front panel.



(For size XXL only you will now work another 4 rounds of lice stitch pattern).  
Then work pattern and decreases according to the chart.

## **NECK**

Change to circular needles size 5 mm, 40 cm and work 10 rounds of ribbing (k1, p1). Change to Arctica Dark Grey (07) and work 1 round of k and 1 round of p. BO.

## **FINISHING**

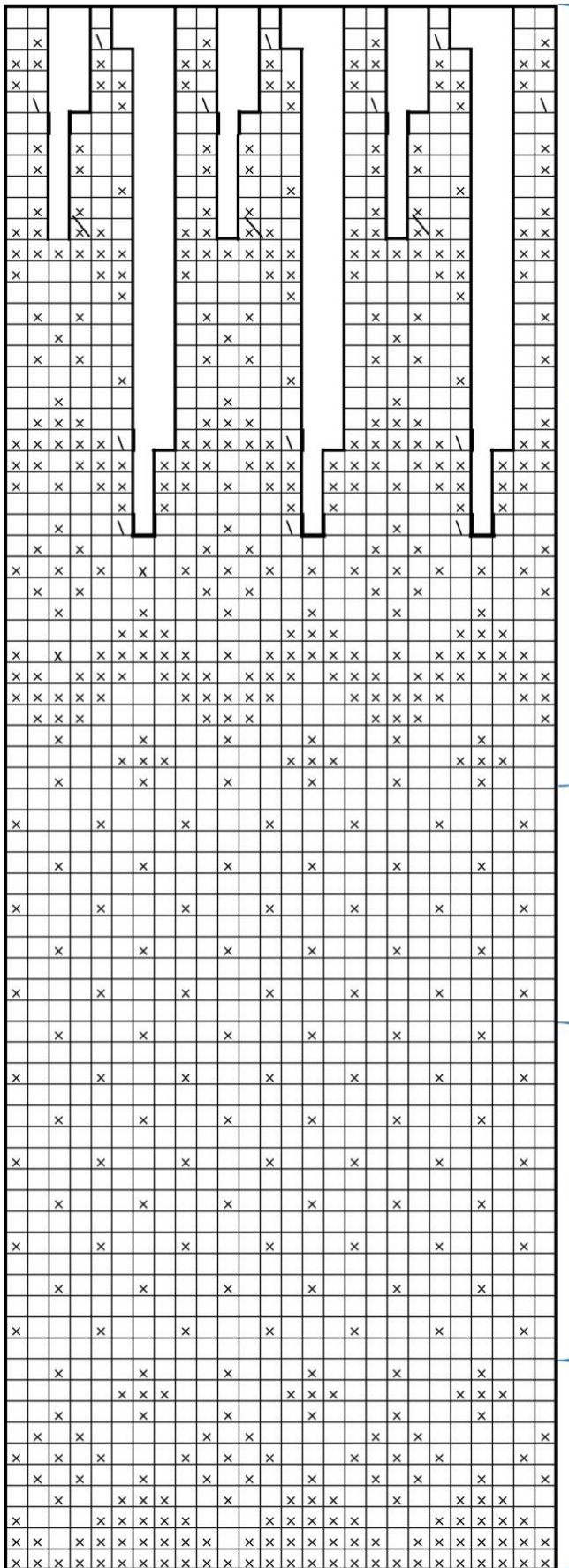
Sew the holes under the arms with Kitchener stitch. Weave in all loose ends securely.

## **WASHING**

Wash the sweater by hand with a wool detergent. Lay the sweater flat on a towel to dry.  
Carefully press with a wet towel.

**Enjoy!**  
Hobbii





|   |   |
|---|---|
| ↑ | Begin here for the sleeve for size S/M            |
| ↑ | Begin here for the sleeve for size L              |
| ↑ | Begin here for the sleeve for size XL/XXL         |
| ↑ | Begin here for the back/front panel for all sizes |
| x | Dark Grey   |
|   | Light Grey  |
| \ | Knit 2 together                                   |
|   | Pattern and decreases                             |
|   | Lice stitch                                       |
|   | Section 1   |