



KNITTING PATTERN

Valentine Love

Shawl

Design: Sarah März, Glücksliesel | Hobbii Design




MATERIALS

2 skeins of Butterfly - color 09

Knitting needles 4 mm (US 6)
(I highly recommend using a circular needle with 100cm+ cord length!)
Cable needle
Tassel maker (or a piece of cardboard box, small book, Phone, etc.)
Tapestry needle

YARN QUALITY

 **Butterfly**, Hobbii
100 % Premium Acrylic
200 g (7.1 oz) = 500 m (547 yds)

GAUGE

There is no gauge needed for this project. Choose a needle size depending on how loose or tight you want the shawl to be. I have used size 4 mm needle to create a middle way.

Sample gauge is 19 sts x 25 rows
(stockinette) = 10 x 10 cm (4 x 4 inch)

ABBREVIATIONS

K = knit
P = Purl
Sl1 = slip 1 stitch purlwise with yarn in front
LLi = left lifted increase
RLi = right lifted increase
Pfb = purl front back (2in1 increase)
pm = place marker
sm = slip marker
YO = yarn over
RS = right side
WS = wrong side

SIZE

One size

MEASUREMENTS

Length: approx. 90 cm (36 inch)
Width: approx. 215 cm (85 inch)
Please note that the measurements might change a little bit depending on your gauge.

PATTERN INFORMATION

The Valentine Love Shawl is worked from the bottom up. It is pretty simple, once you are done with the set up and it'll grow very fast - I promise!

Valentine Love is pretty perfect for saying goodbye to the winter while using it as a normal shawl and also pretty perfect for saying hello to spring while using it as a wrap over the shoulders (when it is too hot for jackets but still too cold for sweaters only).

HASHTAGS FOR SOCIAL MEDIA

#hobbiidesign #hobbiivalentinelove

BUY THE YARN HERE

<http://shop.hobbii.com/valentine-love-shawl>



QUESTIONS

If you have any questions regarding this pattern, please feel free to email us at support@hobbii.com
Please make sure to include the pattern's name and number.

Happy Crafting!

Pattern



INFO AND TIPS

- **Tip 1:** You can use DPN's for working the "Triangle Tip" section. It makes the turning process between the rows way easier and faster.
- **Tip 2:** Have you ever tried to work cables without using a cable needle? Try it! It is so easy and you will fly through the cable section!
- **Increases:** There are two types of increases. Pfb is always the same. Purl one stitch into the front and one stitch into the back loop of the same stitch. *The RLi and LLi are also very simple. Just KNIT the increase into the stitch below BUT make sure to work it underneath the marker! Means: Beginning of Round: first slip the marker. End of the Round: first work the increase.*
- **Edges:** There are 3 edge stitches on both sides of the work. Always worked the same way. RS: k3 - WS: sl1, p2.
- Decide by yourself if you want to add tassels or if you would rather like making some pompoms or adding some beads. If you are in need of some creativity you can find tons of ideas on Youtube or Pinterest about how to decorate the shawl corners.

TASSELS

There are a few ways to make the tassels. You can use your mobile phone to wrap the yarn around or a tassel maker, as well as a piece of cardboard box, book, etc. Choose your tassel maker depending on how long you want the tassels to be. I have used the mobile phone as you can see in the pictures below.

Wrap the yarn around as many times as you want depending on the desired thickness. Sample is made by wrapping 30 times.

Of course, you can also decline the tassels or make other decorations instead! Whatever makes your heart alight <3

*** Make 1 tassel with white (inside) yarn using skein 1 and 2 tassels with red (outside) yarn using skein 2 ***



Step 1: Wrap the yarn around. Cut the yarn.

Step 2: Cut 2 pieces of yarn (approx. 20 cm)

Step 3: Slip off the wrapped yarn from the tassel maker while at the same time pulling one of the 20 cm yarn pieces through it. Center the wrapped yarn and tie some knots to secure it. Make sure to pull the knots very tight!

Step 4: Cut the wrapped yarn open at the bottom.

Step 5: Using the second 20 cm yarn piece wrapping it around the fringes as many times as you want. Tie some knots. Make sure to pull the knots very tight! Hide the Knots and it's ends at the WS of the shawl.

Step 6: Make sure to cut the fringes into the same length as neatly as possible.

TRIANGLE TIP

Set Up

R1 (RS): CO 3 sts.
 R2 (WS): p3.
 R3 (RS): k1, YO, k1, YO, k1. (= 5 sts)
 R4 (WS): sl1, p3, sl1.
 R5 (RS): k2, YO, k, YO, k2. (= 7 sts)
 R6 (WS): sl1, p2, k1, p2, sl1.

Continue

R7 (RS): k3, pm, LLi, pfb, RLi, pm, k3. (= 10 sts)
 R8 (WS): sl1, p2, sm, k4, sm, p2, sl1.
 R9 (RS): k3, sm, LLi, p to marker, RLi, sm, k3. (= 12 sts)
 R10 (WS): sl1, p2, sm, k to marker, sm, p2, sl1.
 R11 (RS): k3, sm, LLi, p1, pfb, purl to 2 sts before marker, pfb, p1, RLi, sm, k3. (= 16 sts)
 R12 (WS): According Row 10.
 R13 (RS): According Row 11. (= 20 sts)
 R14 (WS): According Row 10.
 R15 (RS): According Row 9. (= 22 sts)

CABLE

Set Up

R16 (WS): sl1, p2, sm, k4, p8, k4, sm, p2, sl1.
 R17 (RS): k3, sm, LLi, p1, pfb, k2, sl2 onto CN and hold in back, k2, k2 from CN, sl2 onto CN and hold in front, k2, k2 from CN, k2, pfb, p1, RLi, sm, k3. (= 26 sts)
 R18 (WS): sl1, p2, sm, k4, p12, k4, sm, p2, sl1
 R19 (RS): k3, sm, LLi, p1, pfb, p2, sl2 onto CN and hold in back, k2, p2 from CN, k4, sl2 onto CN and hold in front, p2, k2 from CN, p2, pfb, p1, RLi, sm, k3 (= 30 sts)

R20 (WS): sl1, p2, sm, k6,p2, k2, p4, k2, p2, k6, sm, p2, sl1

R21 (RS): k3, sm, LLI, p4, pm, **work Pattern Chart Row 3**, pm, p4, RLi, sm, k3 (= 32 sts)

CONTINUE

Congratulations! You are all done with the Setup of the project. Now you only need to let it grow. Therefore follow the instructions below.

Note: You have already worked Row 3 from the chart. Go on working Row 4-10, then start again with Pattern Chart Row 1!

Skein 1

Row 1+3 (RS): edge, sm, LLi, p1, pfb, p to marker, work chart, p to 2 sts before marker, pfb, p1, RLi, sm, edge (= 4sts increased per Row)

Row 5 (RS): edge, sm, LLi, p to marker, work chart, p to marker, RLi, sm, edge (= 2sts increased)

All even Rows (WS): edge, sm, k to marker, work chart, k to marker, sm, edge

Repeat these rows until you run out of yarn of skein 1.

Join skein 2 and follow the instructions below.

Skein 2

From now on you will increase 4 sts in EVERY RS-row.

RS: edge, sm, LLi, p1, pfb, p to marker, work chart, p to 2 sts before marker, pfb, p1, RLi, sm, edge (= 4sts increased)

WS: edge, sm, k to marker, work chart, k to marker, sm, edge

Repeat these two rows until you reach color 11 (pink, penultimate color).

End

When you reach pattern chart row 10 somewhere in your penultimate color you are all done with the cables! Remove the cable markers as you go.

Go on working in reverse stockinette while working the 4 increases in every RS-row until you nearly run out of yarn or until you reach your desired length.

Make sure to let enough leftover yarn for 2 more Rows plus BO!

End with a RS-Row!

Done? Then go on with your next WS-row and PURL all sts. Followed by a RS-row where you KNIT all sts - only work LLi and RLi in this row!

BO all sts in your next WS-Row - **purlwise**.

FINISHING

Weave in all ends and attach the previously made tassels.

Gently (wash and) block your shawl, if needed.

PATTERN CHART

Chart Explanation



RS: Knit
WS: Purl



RS: Purl
WS: Knit



2/2 LC: sl2 onto CN, hold in FRONT, k2 + k2 from CN



2/2 RC: sl2 onto CN, hold in BACK, k2 + k2 from CN



2/2 LPC: sl2 onto CN, hold in FRONT, p2 + k2 from CN



2/2 RPC: sl2 onto CN, hold in BACK, k2 + p2 from CN

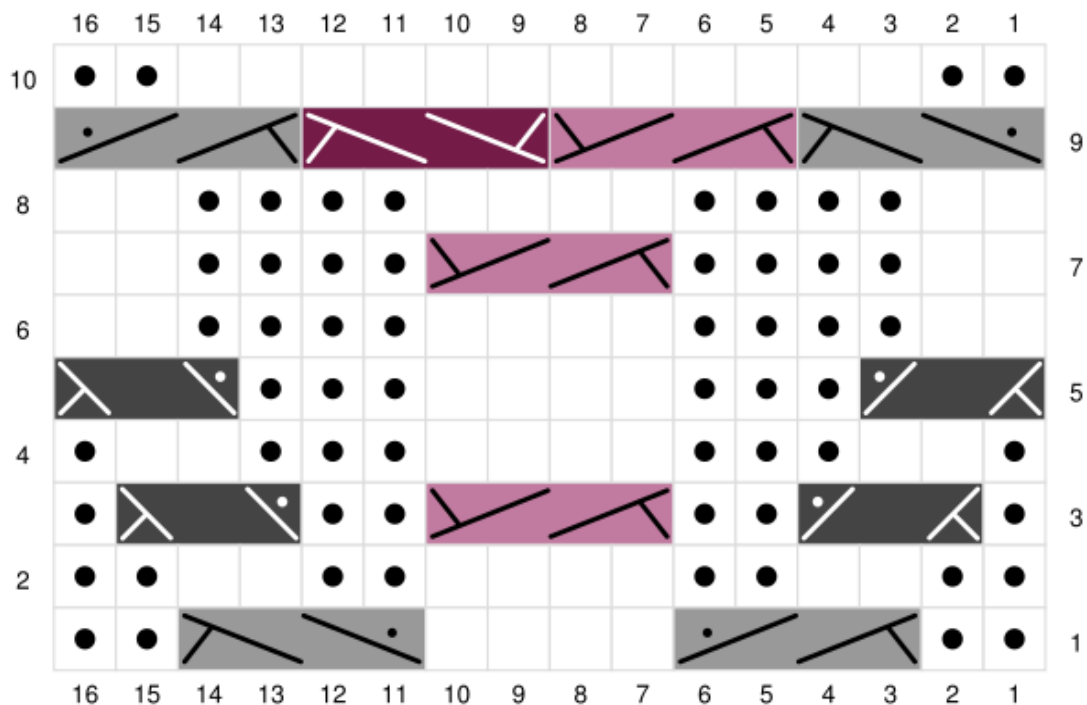


2/1 LPC: sl2 onto CN, hold in FRONT, p1 + k2 from CN



2/1 RPC: sl1 onto CN, hold in BACK, k2 + p1 from CN

Chart



Enjoy!

Sarah <3

