



KNITTING PATTERN

Maggie

Sweater with colorwork

Design: Sys Fredens | Hobbii Design



MATERIALS

5 (5, 6, 6, 7, 7, 8) skeins of Highland Wool, col 22 **A**

4 (4, 4, 5, 5, 5, 6) skeins of Highland Wool, col 39 **B**

Circular needles size 3.5 mm (US 4) / 80 cm

Circular needles size 4 mm (US 6) / 80 cm

Double pointed needles size 4 mm (US 6)

Stitch markers

YARN QUALITY

 **Highland Wool**, Hobbii

100% Peruvian Wool/ 50 g (1,8 oz) = 175 m (191 yards)

GAUGE

25 sts and 28 rounds in pattern = 10 cm (4")

ABBREVIATIONS

CO = cast on

RW = right side

WS = wrong side

BO = bind off

SIZE

S (M, L, XL, 2XL, 3XL, 4XL)

MEASUREMENTS

Width: approx. 44 (48, 52, 56, 60, 64, 68) cm / 17,3" (18.9", 20.5", 22", 23.6", 25.2", 26.8")

Length: 52 (53, 54, 55, 56, 58, 59) cm / 20.5" (20.9", 21.3", 21.7", 22", 22.8", 22.2")

PATTERN INFORMATION

The sweater is worked from the bottom up. You follow the chart using the Fair Isle technique. The colorwork pattern will be worked on the main body as well as on the sleeves.

HASHTAGS FOR SOCIAL MEDIA

#hobbiidesign #hobbiimaggie

QUESTIONS

If you have any questions regarding this pattern, please feel free to email us at support@hobbii.com

Please make sure to include the pattern's name and number.

Happy Crafting!

Pattern



BODY

Ribbing

CO 220 (240, 260, 280, 300, 320, 340) sts with circular needles size 3,5 mm (US 4) using color A, join and start working in the round.

Work 4 cm of ribbing: *k1, p1*.

Place markers at side seams

Place one marker at the beginning of your round and one marker halfway through your round = 110 (120, 130, 140, 150, 160, 170) sts on each half.

Main body

Change to circular needles size 4 mm (US 6)

Follow the chart on page 6 until work measures approx. 32 (32, 33, 33, 34, 35, 36) cm/ 12.6" (12.6" 13", 13", 13.4", 13.8", 14.2").

BACK PANEL

Now work back and forth in rows across the sts of the back panel and let the remaining sts rest. CO 1 new st in each side for when the sleeves are attached to the body. These sts will be knit on the RS and purled on the WS and are not counted in the chart.

Continue until the chart is finished.

Continue with color B until work measures 50 (51, 52, 53, 54, 56, 57) cm/ 19.7" (20.1", 20.5", 20.9", 21.3", 22", 22.4")

Finish with a WS row.

Neck

Right shoulder

1. Row, RS: knit 41 (45, 50, 54, 59, 63, 68) sts and let the remaining sts rest.

2. Row, WS: BO 3 sts and work even until end of row.

3. Row, RS: knit.

4. Row, WS: BO 3 sts and work even until end of row.

5. Row, RS: knit.

4. Row, WS: BO 3 sts and work even until end of row = 32 (36, 41, 45, 50, 54, 59) sts for the shoulder.

BO

Neck

RS: BO 30 (32, 32, 34, 34, 36, 36) sts and knit until end of row.

Left shoulder

1. Row, WS: Purl.

2. Row, RS: BO 3 sts and knit until end of row.

3. Row, WS: Purl.

4. Row, RS: BO 3 sts and knit until end of row.

5. Row, WS: Purl.

6. Row, RS: BO 3 sts and knit until end of row.

7. Row, WS: Purl = 32 (36, 41, 45, 50, 54, 59) sts for the shoulder.

FRONT PANEL

Is worked identically to the back panel until it measures approx. 44 (45, 46, 47, 48, 49, 50) cm / 17.3" (17.7", 18", 18.5", 18.9", 19.3", 19.7").

LEFT SIDE

Knit 44 (48, 53, 57, 62, 66, 71) sts, turn, let remaining sts rest.

1. Row, WS: BO 4 sts and continue in pattern until end of row.

2. Row, RS: Work pattern until end of row.

3. Row, WS: BO 3 sts and continue in pattern until end of row.

4. Row, RS: Work pattern until end of row.

5. Row, WS: BO 2 sts and continue in pattern until end of row.

6. Row, RS: Work pattern until end of row.

Now you will BO 1 st on each WR-row until 32 (36, 41, 45, 50, 54, 59) sts remain on the shoulder.

Continue even until work measures 52 (53, 54, 55, 56, 58, 59) cm / 20.5" (20.9", 21.3", 21.7", 22", 22.8", 22.2")

BO

Neckline

RS: BO 24 (26, 26, 28, 28, 30, 30) sts and continue in pattern until end of row.

RIGHT SIDE

1. Row, WS: work pattern.

2. Row, RS: BO 4 sts and continue in pattern until end of row.

3. Row, WS: work pattern.

4. Row, RS: BO 3 sts and continue in pattern until end of row.

5. Row, WS: work pattern.

6. Row, RS: BO 2 sts and continue in pattern until end of row.

Now you will BO 1 st on each RS-row until 32 (36, 41, 45, 50, 54, 59) sts remain on the shoulder.

Continue even until work measures 52 (53, 54, 55, 56, 58, 59) cm / 20.5" (20.9", 21.3", 21.7", 22", 22.8", 22.2")

BO.

SLEEVES

Cuffs

Cast on 68 (68, 70, 70, 72, 72, 74) sts with color A on double pointed needles or on circular needle size 3,5 mm (US 4) for using magic loop. Join work and continue knitting in the round.

Work 4 cm (1.6") of ribbing as done on the blouse.

Sleeve

Change to circular needle size 4 mm (US 6).

Place a stitch marker at the beginning of the round.

Work 5 rounds in the round following the chart.

Next round: knit until 1 st before marker, M1R, k2, M1L, continue in pattern until end of row.

Continue increasing on every 6. Round until you have 102 (106, 110, 112, 114, 118, 120) sts.
Continue in pattern until work measures approx. 44 cm (17.3")

Sleeve cap

BO 5 sts at the beginning of each row (slip the first st knitwise) 8 (8, 8, 9, 9, 9, 9) times on each side = 22 (26, 30, 22, 24, 28, 30) sts.

BO.

Work the other sleeve the same way.

FINISHING

Sew the shoulders together.

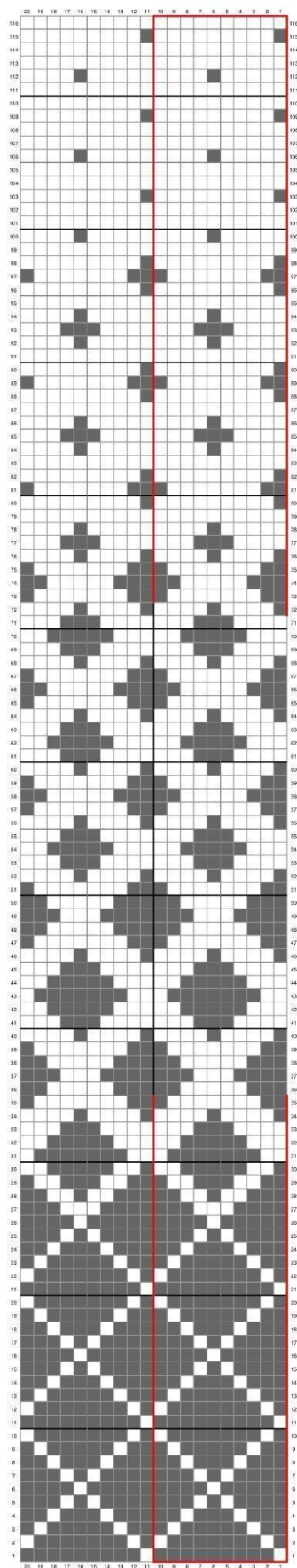
Neckline

Pick up approx. 126 (130, 134, 138, 140, 144, 148) sts along the neckline with color B using the circular needles size 3,5 mm (US 4) and work 4 cm of ribbing.

BO very loosely. Fold the collar and sew it into place from the WS.

ARMHOLE

Sew the sleeves into the blouse (1 st in).



CHART

White square = color A
Dark square = color B

The 10 st frame will be repeated
as many times as needed
to complete each round.