



KNITTING PATTERN

Beatrice

Jumper

Design: Sanna Mård Castman | Hobbii Design

MATERIALS

3 (3) 3 (4) 4 (5) 5 skein(s) of Fluffy Day col. 08

Circular needle 4.5 mm (US 7), 40 cm (16"), 60 cm (24") and 80 cm (32")

Circular needle 5 mm (US 8), 60 cm (24") and 80 cm (32").

Stitch marker

Stitch holder

Tapestry needle

YARN QUALITY

 **Fluffy Day**, Hobbii

100 % Acrylic. 100 g (3.5 oz) = 285 m (310 yds)

GAUGE

10 cm x 10 cm (4" x 4") = 17 sts x 26 rows
Stockinette stitches

ABBREVIATIONS

BO = bind off

CO = cast on

Cont = continue

PM = place marker

PU = pick up

RS = right side

St/sts = stitch / stitches

WS = wrong side

EXPLANATIONS

Edge stitch (edge st) = K first and last st on every row.

Lace = chart

Make 1Right (M1R) = Pick up strand between 2 sts, twist and k through back loop.

Make 1Left (M1L) = Pick up strand between 2 sts, twist and k.

Slip a stitch knitwise (sl1k) = Sl1k to right hand needle without knitting the st.

Stockinette stitch (St st) = K from RS, p from WS.

QUESTIONS

If you have any questions regarding this pattern, please feel free to email us at

support@hobbii.com

Please make sure to include the pattern's name and number.

Happy Crafting!

SIZE

XS (S) M (L) XL (XXL) XXXL

MEASUREMENTS

Chest: 95 (103) 111 (119) 131 (143) 155 cm /

37.4" (40.5") 43.7" (46.8") 51.5" (56.3") 61"

Length: 54 (56) 58 (60) 62 (64) 66 cm / 21.25" (22") 22.8" (23.6") 24.4" (25.1") 26"

Length, sleeve: 45 (46) 47 (48) 48 (47) 47 cm / 17.7" (18") 18.5" (18.9") 18.9" (18.5") 18.5"

PATTERN INFORMATION

Beatrice is an easy worked jumper with a simple lace pattern in the center. If you want to try lace knitting this is a perfect pattern.

HASHTAGS FOR SOCIAL MEDIA

#hobbiidesign #hobbibeatrice

Pattern



INFO AND TIPS

Jumper is worked bottom to top in the round. Divide at armholes and finish Back and Front separately.

Sleeves are worked flat, back and forth.

BODY

With circular needle 4.5 mm (US 6) , 80 cm (32"), CO 171 (186) 198 (213) 237 (258) 279 sts. Work K1 p2 rib, in the round. NOTE! PM at beginning of round = right side. Work 15 rounds. Last round dec 11 (10) 10 (13) 13 (14) 15 sts evenly spaced = 160 (176) 188 (200) 224 (244) 264 sts.

Change to circular needle 5 mm (US 8) , 80 cm (32") and continue as follows: work 33 (37) 40 (43) 49 (54) 59 St st, chart 14 sts, 66 (74) 80 (86) 98 (108) 118 St st, chart 14 sts, 33 (37) 40 (43) 49 (54) 59 St st.

When work measures 37 (38½) 40 (40) 42 (43½) 45 cm / 14.5" (15") 15.75" (15.75") 16.5" (17.1") 17.7" divide in Back and Front.

Keep 80 (88) 94 (100) 112 (122) 132 sts on needle = Back. Transfer rem 80 (88) 94 (100) 112 (122) 132 sts to a stitch holder = Front.

BACK

First row = RS.

CO 1 st in each side = edge st = 82 (90) 96 (102) 114 (124) 134 sts

Change to circular needle 60 cm (24").

Continue in St st and lace as before, back and forth.

Neck: When work measures 51 (53) 55 (57) 59 (61) 63 cm / 20" (20.8") 21.6" (22.4") 23.2" (24") 24.8" k 26 (29) 32 (34) 40 (44) 49 sts, BO 30 (32) 32 (34) 34 (36) 36 sts for neck, work to end.

Finish each side separately.

Left side:

(WS) Work to end.

(RS) BO 2 sts for neck, work to end.

(WS) Work to end.

(RS) BO 1 st for neck, work to end.

Work 3 rows,

Next row RS BO of all sts for shoulder.

Right side: Work same as left side, but mirrored. BO for neck from WS.

FRONT

Transfer sts from stitch holder to circular needle 5 mm (US 8), 60 cm (24").

First row: RS.

CO 1 st in each side = edge st = 82 (90) 96 (102) 114 (124) 134 sts

Continue in St st and lace as before, back and forth.

Neck: When work measures approx 45 (47) 49 (51) 53 (55) 57 cm / 17.7" (18.5") 19.3" (20") 20.8" (21.6") 22.4" work 32 (35) 37 (40) 46 (50) 55 sts, BO 18 (20) 20 (22) 22 (24) 24 sts for neck, work to end. Finish each side separately.

Right side: Knit out row from the wrong side.

RS: BO on every second row for the neckline for 3-2-2-1-1 sts. BO the shoulder from the RS when work measures the same as the back piece.

Left side: Knit like the right side, but in the opposite direction.

SLEEVES

Make 2.

With circular needle 4.5 mm (US 6), 60 cm (24"), CO 44 (44) 47 (47) 47 (50) 50 sts. Work k1 p2 rib inside edge sts. First row = WS. Work 15 rows. Change to circular needle 5 mm (US 8), 60 cm (32").

Work in St st inside edge sts to end.

Inc row: When work measures 7-8 cm / 3" work as follows: (RS) edge st, M1R, work to 1st st, M1L, edge st.

Work 9 (9) 9 (9) 9 (7) 7 rows.

Repeat inc row and 9 (9) 9 (9) 9 (7) 7 rows another 8 (9) 9 (10) 10 (10) 11 times = 62 (64) 67 (69) 69 (72) 74 sts.

When work measures 45 (46) 47 (48) 48 (47) 47 cm / 17.7" (18") 18.5" (18.9") 18.9" (18.5") 18.5"

BO on row from RS.

FINISHING

Sew in all ends. Block pieces to measurements.

Join shoulders.

Neckband: (RS) With circular needle 4.5 mm (US 6), 40 cm (16"), PU 87 (90) 90 (93) 93 (96) 96 m along neck. Work k1 p2 rib in the round. Work 17 rounds. BO. Fold neckband double towards WS and sew.

Sew in sleeves. Sew seams on sleeves.

Enjoy!

Sanna



CHART

Chart in the round:

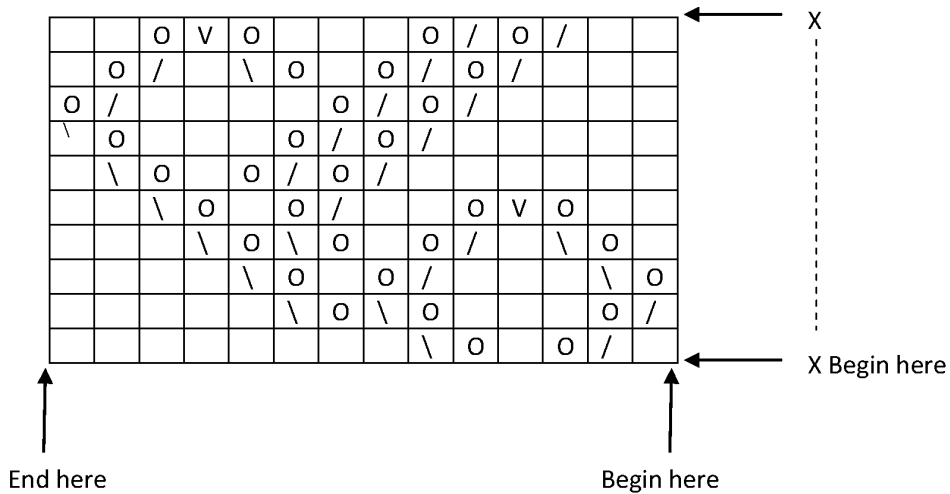
Chart shows every second round. Every second round k.

Chart back and forth:

Chart shows every second row. every second row p.

Begin at arrows, repeat X-X.

Rows/rounds: Begin at arrow and end at arrow.



knit



knit 2 together



slip 1 as if to k, k1, pull over



yo



slip2 tog as if to k, k1, pull over