



KNITTING PATTERN

Liva

Blouse

Design: Sys Fredens | Hobbii Design

MATERIALS

7 (8, 9, 10) skeins of Tweed Delight, col. 10

Circular needles 24" (60 cm)/ size 10 (6 mm) and 10.75 (7 mm)

Opt. 32" (80 cm) circular needle for magic loop

Cable needles
Stitch markers
Stitch holders

YARN QUALITY

 **Tweed Delight**, Hobbii

85% Wool, 10% Acrylic, 5% Viscose/

1.75 oz. (50 grams) = 109 yds (100 meters)

GAUGE

On a size 10.75 (7 mm) needle in rib pattern:
18 sts and 19 rounds in 4" (10 cm), measured slightly stretched.

On a size 10.75 (7 mm) needle in stockinette st:
14 sts and 18 rows in 4" (10 cm).

SIZE

S (M, L, XL)

MEASUREMENTS

Width: approx. 15" (16½", 18.1", 19.7") or 38 (42, 46, 50) cm, has a lot of stretch

Length: 20" (20½", 20.9", 21.3") or 51 (52, 53, 54) cm

PATTERN INFORMATION

Cables are made from chart on the front piece.

The back and the sleeves are knitted in a rib pattern.

The back has tilted shoulders. The sleeves are knitted in the round using magic loop and finished with a sleeve cap. The neckband is knitted in a rib pattern.

VIDEOS OF TECHNIQUES

Magic loop: [Link to video](#)

3-needle-bind off: [Link to video](#)

German Short Rows: [Link to video](#)

HASHTAGS FOR SOCIAL MEDIA

#hobbiidesign #hobbiiliva

QUESTIONS

If you have any questions regarding this pattern, please feel free to email us at support@hobbii.com

Please make sure to include the pattern's name and number. Happy Crafting!

Pattern



BODY

Ribbed hem

Cast on 136 (152, 168, 184) sts on a size 10 (6 mm) circular needle and knit in the round.

Knit 2" (5 cm) ribbing: k2, p2.

Mark the side seams

Place a marker at the beginning of the round between 2 purl sts and a marker in the other side seam after 68 (76, 84, 92) sts also between 2 purl sts.

BLOUSE

Switch to a size 10.75 (7 mm) circular needle and knit 4 rounds of ribbing as shown by the sts.

Finish at the marker at the beginning of the round.

Continue knitting by chart (see page 7) on the front and with ribbing on the back like this:

K 1 (1, 1, 1), knit the 16 sts of the frame 4 (4, 5, 5) times, knit another 3 (11, 3, 11) sts by the chart = 68 (76, 84, 92) sts on the front, knit ribbing: k2, p2 over the back. Knit until the work measures 13.4" (13.4", 13.4", 13.4") or 34 (34, 34, 34) cm.

Finish with an uneven round of the chart and finish when there is 3 (4, 4, 5) sts left before the marker at the beginning of the round.

Armhole, binding off

Right side: Bind off 6 (8, 8, 10) sts, knit the front until there are 3 (4, 4, 5) sts left before the marker in the side seam, bind off 6 (8, 8, 10) sts and knit the back = 62 (68, 76, 82) sts for resp. front and back.

BACK

Is knitted over 62 (68, 76, 82) sts.

Armhole, decreases

Wrong side: Bind off 1 st, knit ribbing across.

Right side: Bind off 1 st, knit ribbing across.

Repeat these 2 rows until you've bound off 5 (6, 7, 8) sts in each side: 52 (56, 62, 66) sts.

Knit until the armhole measures 6.3" (6.7", 7.1", 7½") or 16 (17, 18, 19) cm. Finish with a wrong side row.

Tilted shoulders, German short rows

Right side: Knit until there are 4 sts left on the sleeve side, turn using a turn st.

Wrong side: Knit until there are 4 sts left on the sleeve side, turn using a turn st.

Right side: Knit until there are 8 sts left on the sleeve side, turn using a turn st.

Wrong side: Knit until there are 8 sts left on the sleeve side, turn using a turn st.

Right side: Knit until there are 12 (13, 15, 16) sts left on the sleeve side.

Knit on over these 12 (13, 15, 16) sts as the turn sts are knitted as 1 st. Cut the yarn and place these sts on a stitch holder for shoulder.

Wrong side: Attach yarn and knit until there are 12 (13, 15, 16) sts left on the sleeve side. Knit on over these 12 (13, 15, 16) sts as the turn sts are knitted as 1 st. Cut the yarn and place these sts on a stitch holder for shoulder.

Neck

Place the 28 (30, 32, 34) sts of the neck on a stitch holder.

FRONT

Is knitted over 62 (68, 76, 82) sts.

Note: From now on, knit cables on all even rows = right side rows.

Arm holes, decreases

Wrong side: Bind off 1 st, knit pattern across.

Right side: Bind off 1 st, knit pattern across.

Repeat these 2 rows until 5 (6, 7, 8) sts has been bound off in each side: 52 (56, 62, 66) sts.

Note: Leave out the outermost cables on sizes S and M.

Knit until the work measures 17" (17.3", 17.7", 18.1") or 43 (44, 45, 46) cm. Finish with a wrong side row.

Neckline, left side

Knitted in ribbing.

Knit 21 (23, 25, 27) sts, set the remaining aside.

Wrong side: Bind off 2 (2, 2, 2) sts, knit across.

Right side: Ribbing.

Wrong side: Bind off 2 (2, 2, 2) sts, knit across.

Right side: Ribbing.

After this, bind off 1 st in the neck side until there are 12 (13, 15, 16) sts.

Knit even until the armhole measures 7.1" (7½", 7.9", 8.3") or 18 (19, 20, 21) cm. Finish with a wrong side row.

Place the sts on a stitch holder.

Neckline, right side

Place 10 (10, 12, 12) sts on a stitch holder.

Knitted in ribbing.

Right side: Attach yarn and knit ribbing.

Wrong side: Ribbing.

Right side: Bind off 2 (2, 2, 2) sts, knit across.

Wrong side: Ribbing.

Right side: Bind off 2 (2, 2, 2) sts, knit across.

After this, bind off 1 st in the neck side until there are 12 (13, 15, 16) sts.

Knit even until the armhole measures 7.1" (7½", 7.9", 8.3") or 18 (19, 20, 21) cm. Finish with a wrong side row.

Place the sts on a stitch holder.

ASSEMBLING

Shoulder seams

Knit the sts together using a 3-needle-bind off.

SLEEVES

Knitted using magic loop

Ribbing

Cast on 36 (40, 40, 44) sts on a size 10 (6 mm) circular needle and knit in the round.

Knit 2" or 5 cm ribbing: k2, p2.

Mark the sleeve seam

Place a marker at the beginning of the round between 2 knit stitches.

Sleeve

Switch to a size 10.75 (7 mm) circular needle and knit ribbing as on the hem.

Start increasing

Knit to 1 st before the marker, yo, k2, yo, knit around.

Knit the yo tbl on the next round = 2 sts inc.

Now increase on every 6th round until you have 58 (62, 66, 70) sts.

The increased sts is knitted in the rib-pattern when there are enough sts.

Knit until the work measures approx. 20½" or 52 cm. Finish at the beginning of the round.

Sleeve cap

Knit back and forth on the circular needle in rib-pattern.

Right side: Bind off 7 sts and knit across.

Wrong side: Bind off 7 sts and knit across.

Repeat these 2 rows another 2 times = 16 (20, 24, 28) sts.

Bind off.

Knit the other sleeve similarly.

Sew the sleeves on to the armhole.

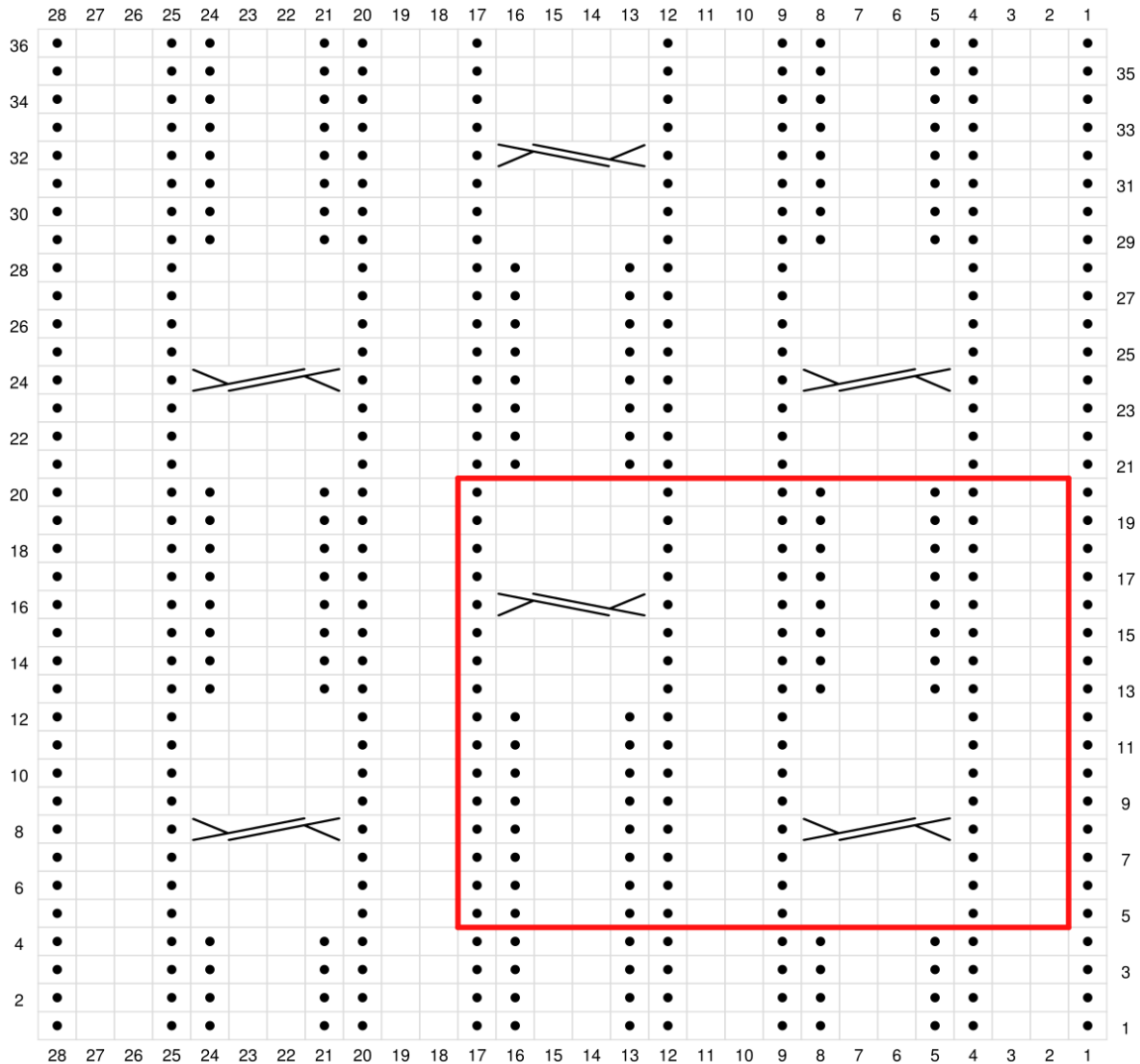
NECKBAND

Knit up approx. 68 (72, 76, 80) sts along the neckline on a size 10 (6 mm) circular needle (divisible by 4 sts) and knit in the round (opt. using magic loop).

Knit 0.8" (2 cm) rib-pattern: k2, p2, please mind that the rib should fit the center sts of the front and back.


Bind off in ribbing.


CHART



Knit on the right side, purl on the wrong side.

● Purl on the right side, knit on the wrong side.

 Cross 4 sts to the right: place 2 sts on a cable needle behind the work, k2, knit the 2 sts on the cable needle.

 Cross 4 sts to the left: place 2 sts on a cable needle in front of the work, k2, knit the 2 sts on the cable needle.