



KNITTING PATTERN

Simply Wintry

Slipover

Design: Sanna Mård Castman | Hobbii Design


MATERIALS

7 (8) 9 (10) 11 (12) 13 skeins of Amigo XL color 058

Circular needle 4.5 mm (US 7) 40 cm (16").
4.5 mm (US 7) and 5.5 mm (US 9) 60 cm (24") and 80 cm (32")

Stitch marker
Needle
Cable needles

YARN QUALITY

 **Amigo XL**, Hobbii
100 % Acrylic. 50 g (1.76 oz) = 100 m (109 yds)

GAUGE

10 cm x 10 cm (4" x 4") using needle 5.5 mm (US 9) = 17 sts x 24 rows in Stockinette Stitches

ABBREVIATIONS

BO = Bind off
CO = Cast on
Cont = Continue
K = Knit
P = Purl
PM = Place marker
PU = Pick up
St/Sts = stitch / stitches
St st = Stockinette stitches
Rem = Remaining
RS = Right side
WS = Wrong side

NOTES

Edge stitch (edge st) = Knit first and last st on every row.
Slip 1 knitwise (sl1k) = In the round: Row 1; sl1k. Row 2; knit.
Back and forth: RS; sl1k. WS; purl.

SIZE

XS (S) M (L) XL (XXL) XXXL

MEASUREMENTS

Chest: 100 (108) 118 (124) 136 (148) 162 cm / 39.3" (42.5") 46.4" (48.8") 53.5" (58.2") 63.7" (21.25") 22" (22.8") 23.6" (24.4") 25"

PATTERN INFORMATION

Simply Wintry is a cozy slipover worked from the bottom to top in the round. At "armholes" you divide and finish each side separately.

HASHTAGS FOR SOCIAL MEDIA

#hobbiidesign #hobbiiSimplywintry

QUESTIONS

If you have any questions regarding this pattern, please feel free to email us at support@hobbii.com. Please make sure to include the pattern's name and number.

Happy Crafting!

Pattern



BODY

With circular needle 4.5 mm (US 7), 80 cm (32"), CO 177 (192) 210 (216) 240 (261) 282 sts. Work k1 p2 rib in the round. PM in beginning of first round =Right side. Work 19 rounds (8 cm). Last round inc 1 (2) 0 (2) 2 (1) 0 sts evenly spaced = 178 (194) 210 (218) 242 (262) 282 sts.

Change to circular needle 5.5 mm (US 9), 80 cm (32"). Work as follows::

p 6 (4) 2 (4) 4 (3) 8 X sl1k, p5 X, repeat X-X 2 (3) 4 (4) 5 (6) 6 times total. Sl1k, p3, chart 16 sts, p3, sl1k, p5, sl1k, p3, chart 16 sts, p3, X-X 2 (3) 4 (4) 5 (6) 6 times total, sl1k, p 6 (4) 2 (4) 4 (3) 8 sts, PM = left side. Repeat *-* one more time = FRONT.

When work measures 29 (30) 31 (32) 33 (34) 36 cm / 11.4" (11.8") 12.2" (12.6") 13" (13.4") 14" divide and finish Back and Front separately. Keep 89 (97) 105 (109) 121 (131) 141 sts on needle = BACK. Transfer rem sts to a stitch holder = FRONT.

BACK

First row is RS.

Change to circular needle 60 cm (24").

CO 1 st at beginning of row and at the end of row (edge sts) = 91 (99) 107 (111) 123 (133) 143 sts.

Cont pattern as before.

Neck: When work measures 50 (52) 54 (56) 58 (60) 62 cm / 19.7" (20.4") 21.25" (22") 22.8" (23.6") 24.4" work 30 (34) 38 (39) 45 (49) 54 sts, BO 31 (31) 31 (33) 33 (35) 35 sts in center, work to end.

Finish each side separately.

Left side:

(WS) Work to end.

(RS) BO another 3 sts for neck. Work to end.

(WS) Work to end.

(RS) BO rem sts.

Right side: Work as left side but mirrored. BO for neck from WS.

FRONT

Transfer sts to a circular needle 5.5 mm (US 9), 60 cm (24").

First row is RS.

CO 1 st at beginning of row and 1 st at the end of row (edge st) = 91 (99) 107 (111) 123 (133) 143 sts.

Cont pattern as before.

Neck: When work measures 46 (48) 50 (52) 54 (56) 58 cm / 18" (18.9") 19.7" (20.4") 21.25" (22") 22.8" work 37 (41) 45 (46) 52 (56) 61 sts, BO 17 (17) 17 (19) 19 (21) 21 sts in center for neck. Work to end.

Finish each side separately.

Right side:

(WS) Work to end.

(RS): BO every other row 3-2-2-1-1-1 sts . BO rem sts when work measures same as Back.

Left side: Work as right side but mirrored. BO for neck from WS.

FINISHING

Block pieces to measurements. Join shoulders.

Collar: (RS). With circular needle 4.5 mm (US 7) , 40 cm (16"), PU 86 (86) 86 (90) 90 (94) 94 sts runt along neck. K 1 p1 in the round. When collar measures 22-23 cm (9"), BO.

NOTE ; after 4 cm (1.5") change to circular needle 5.5 (US 9), 40 cm (16").

Armholebands: (RS) With circular needle 4.5 mm (US 7), 40 cm (16"), PU sts along armhole. PU in every row, skip every 4th row. Work k1 p1 rib for 8 cm (3"). BO in same rib. Fold double towards WS. Sew.

Enjoy!

Sanna



CHART

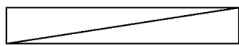
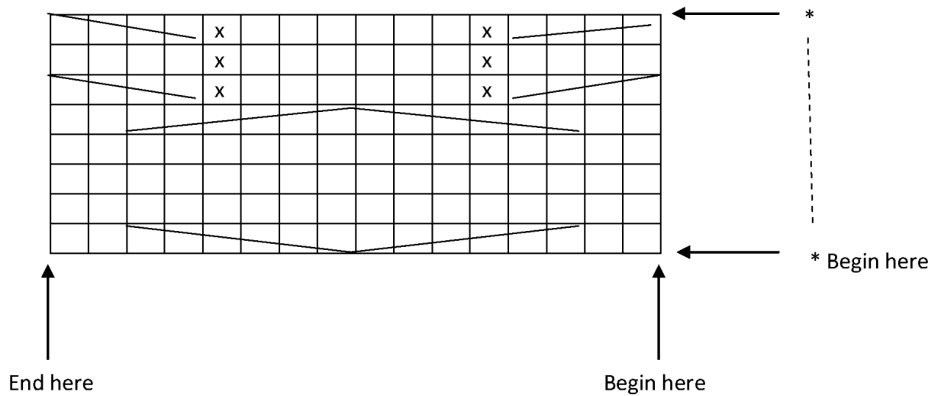
How to work the chart.

In the round: Chart shows every second round.

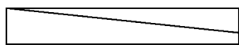
Back and Forth: Chart shows rows from RS.

WS = k on k and p on p.

Begin at "Begin here", end at "End here". Rows/Rounds: Begin at "Begin here". Repeat *-*.



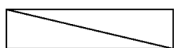
6 stitch right cable = Slip 3 to cable needle and hold in back.
K3. K3 from cable needle.



6 stitch left cable = Slip 3 to cable needle and hold in front. K3.
K3 from cable needle.



4 stitch right cable = Slip 2 to cable needle and hold in back. K2. K2 from cable needle.



4 stitch left cable = Slip 2 to cable needle and hold in front. K2. K2 from cable needle.



In the round: Knit all rows.
Back and Forth: K on RS. P on WS.



In the round: Purl all rows.
Back and Forth: P on RS. K on WS.